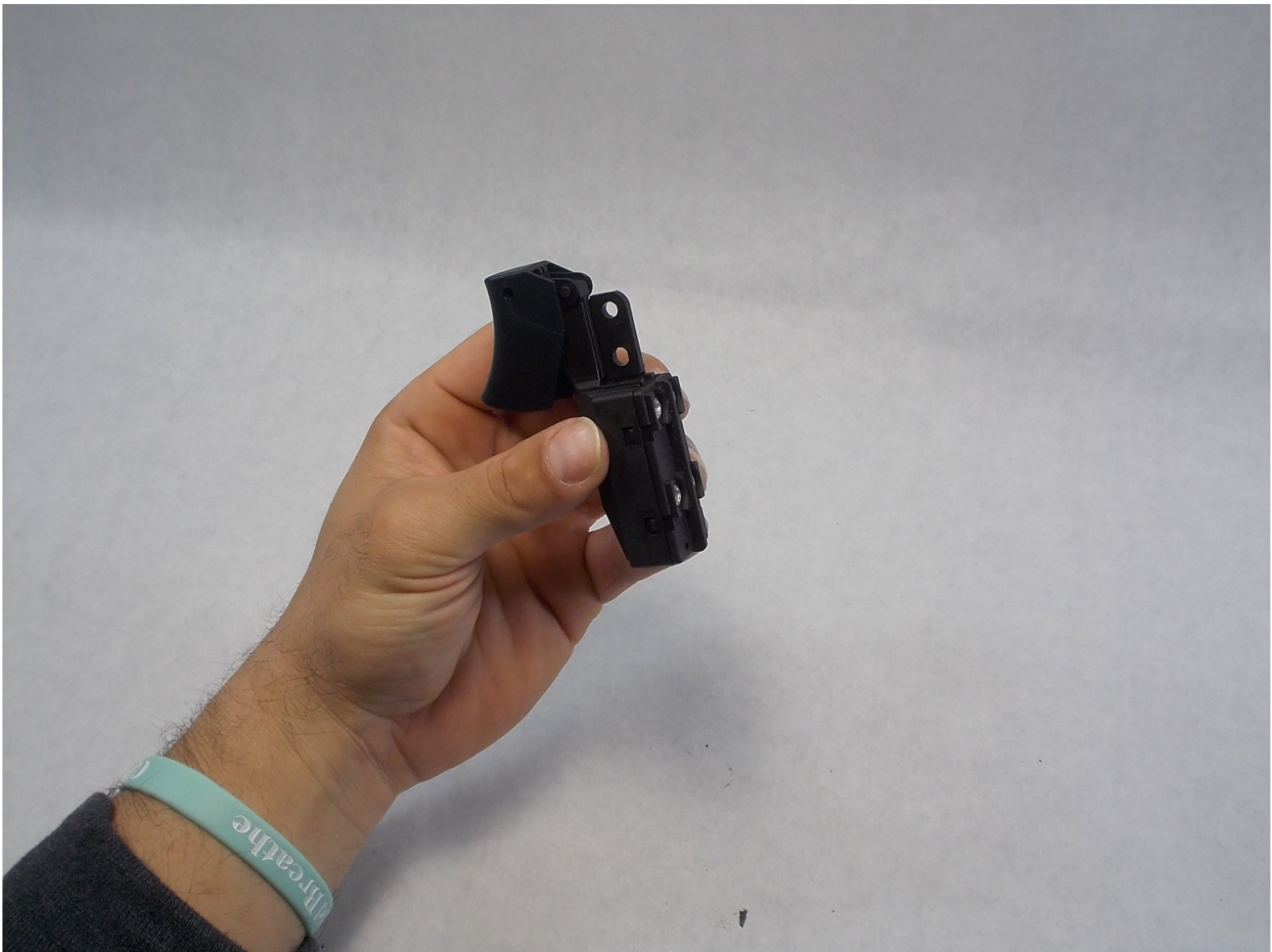




Ridgid Circular Saw R3205 Switch Replacement

How to Replace the switch on a Ridgid R3205 circular saw. The switch on a circular saw is what turns the motor on and off.

Written By: Joshua Caron



INTRODUCTION

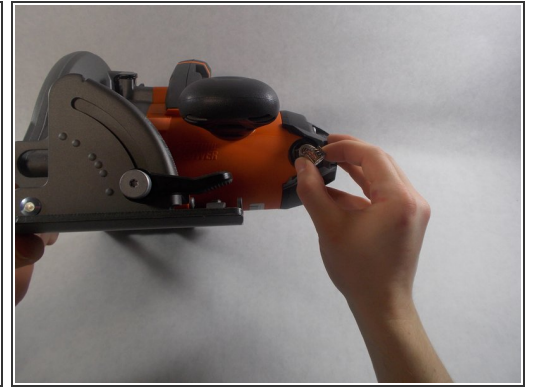
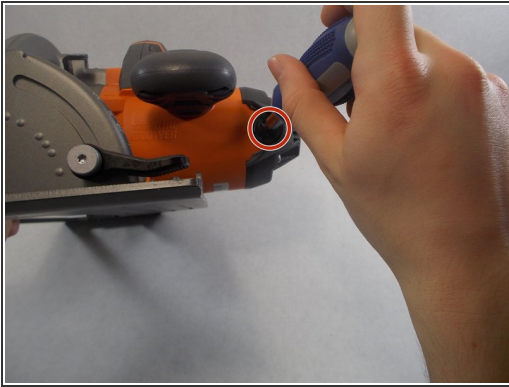
The switch on a circular saw is one of the most commonly replaced items. The switch wears out after regular use. Replacing the switch is very easy and doesn't require any methods that are complicated.



TOOLS:

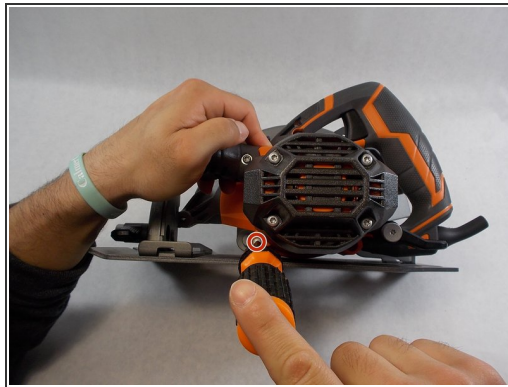
- [T25 Torx Screwdriver](#) (1)
 - [T20 Torx Screwdriver](#) (1)
 - [Flathead Screwdriver](#) (1)
 - [Phillips #1 Screwdriver](#) (1)
-

Step 1 — Motor Housing with Handle Assembly



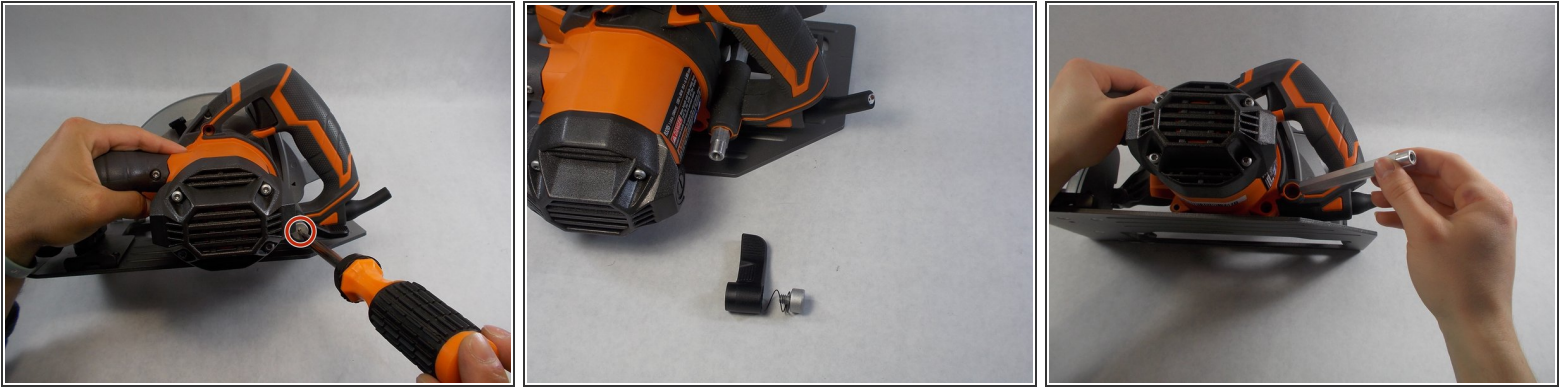
- Remove the brush assembly with a flat head screwdriver.

Step 2



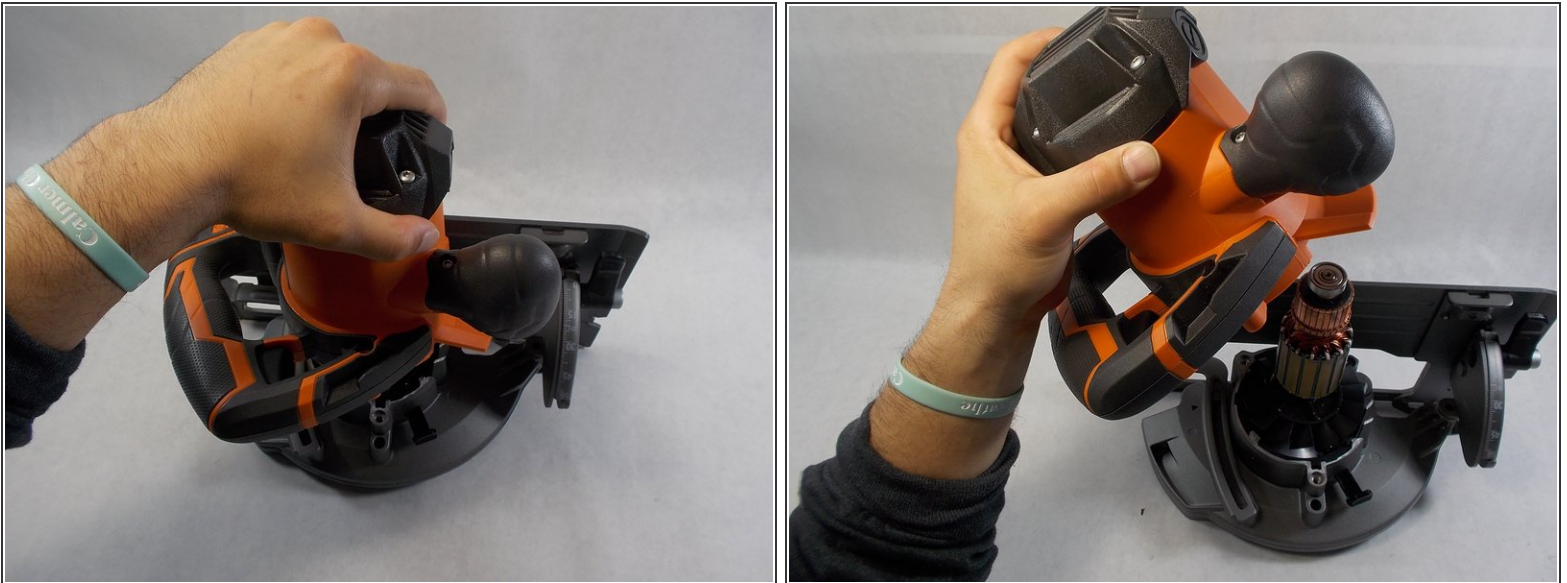
- Use a T25 Torx screwdriver to remove 3 (M5 x 58 mm) screws.

Step 3



- Use a T20 Torx screwdriver to remove the (1/4-20 x 0.66 in.) screw.
- After removing the (1/4-20 x 0.66 in.) screw the lever assembly can be unscrewed from the (1/4-20 x 0.66 in.) screw.

Step 4



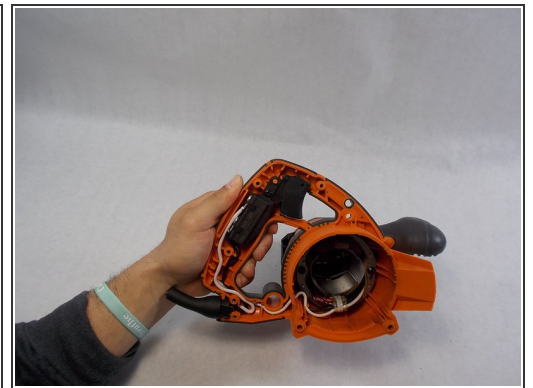
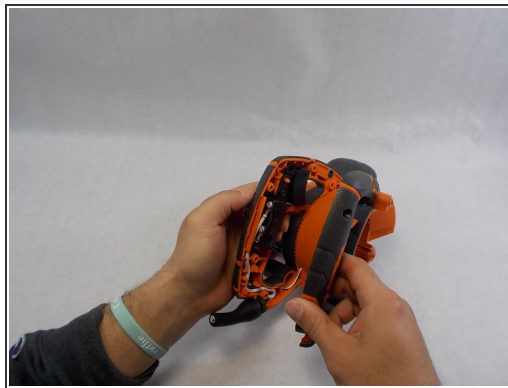
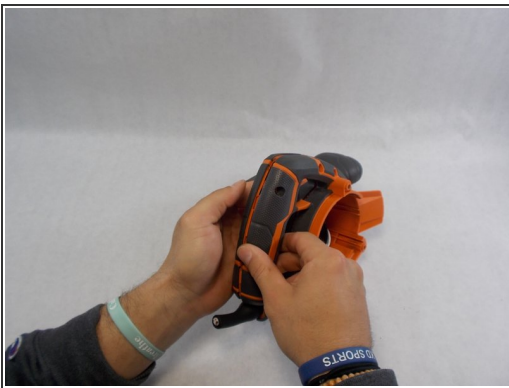
- The motor housing assembly can now be removed from the rest of the saw.

Step 5 — Switch



- Remove 5 Torx 20 (#8-16 x 5/8 in.) screws from the outer handle.

Step 6



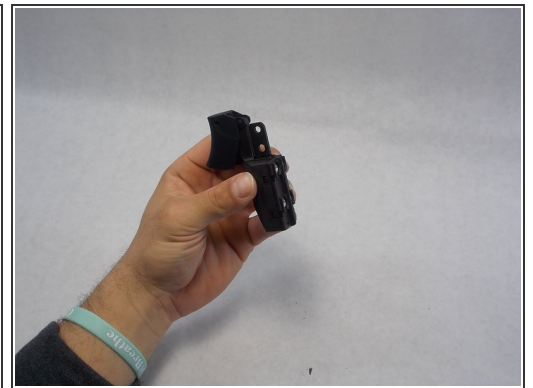
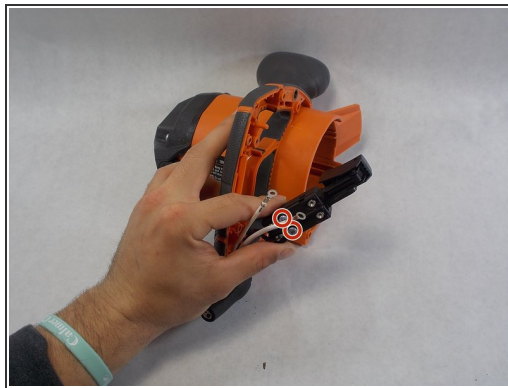
- Remove the outer handle.

Step 7



- Using a phillips head screwdriver remove the (M4 x 12 mm) screw holding the switch in place.

Step 8



- Remove the wires that attach to the power cord.

To reassemble your device, follow these instructions in reverse order.