



Ridgid Circular Saw R3205 Lower Blade Guard Replacement

How to Replace the lower blade guard on a Ridgid R3205 circular saw. The lower blade guard on a circular saw protects the blade when the saw is not in use.

Written By: Joshua Caron



INTRODUCTION

The lower blade guard on a circular saw is to keep the user safe. The lower blade guard protects the blade from getting damaged and also protects the user from getting cut by the saw. If the lower blade guard is damaged (bent or broken) the guard should be replaced because you could be injured if the saw malfunctions. Replacing the lower blade guard is moderately easy and doesn't require any steps that are too complicated.



TOOLS:

- [6 mm Hex Key](#) (1)
- [Metal Spudger](#) (1)
- [iFixit Opening Tools](#) (1)



PARTS:

- [Lower Blade Guard](#) (1)

Step 1 — Blade



- Press the black spindle lock and hold it down.
- While keeping the spindle lock pressed down use a 6mm allen wrench to remove the 5/16-18 x 0.55 inch screw.

Step 2



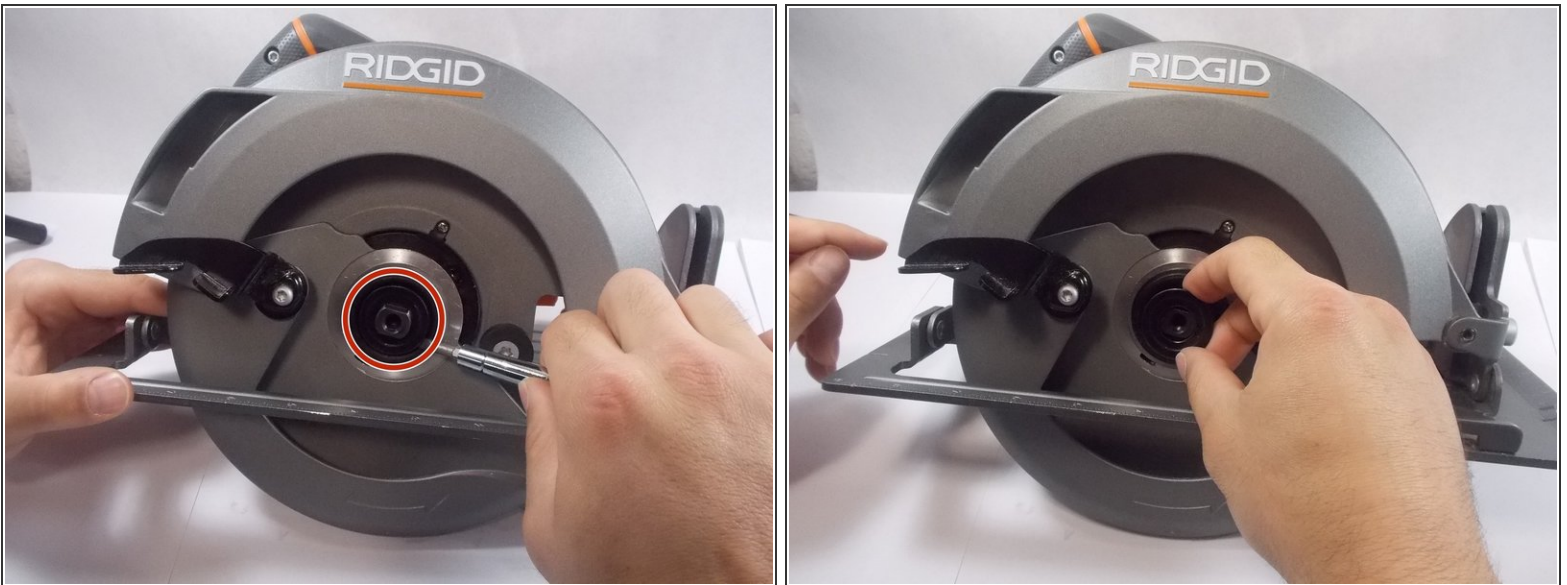
- Release the spindle lock and remove the outer flange by lifting it off the output shaft.

Step 3



- With the outer flange removed retract the lower blade guard into the upper blade guard housing by pushing on the black lever.
- Slide the blade out of from the bottom of the saw.

Step 4 — Lower Blade Guard



- Use a prying tool or your fingers to remove the inner flange.

Step 5



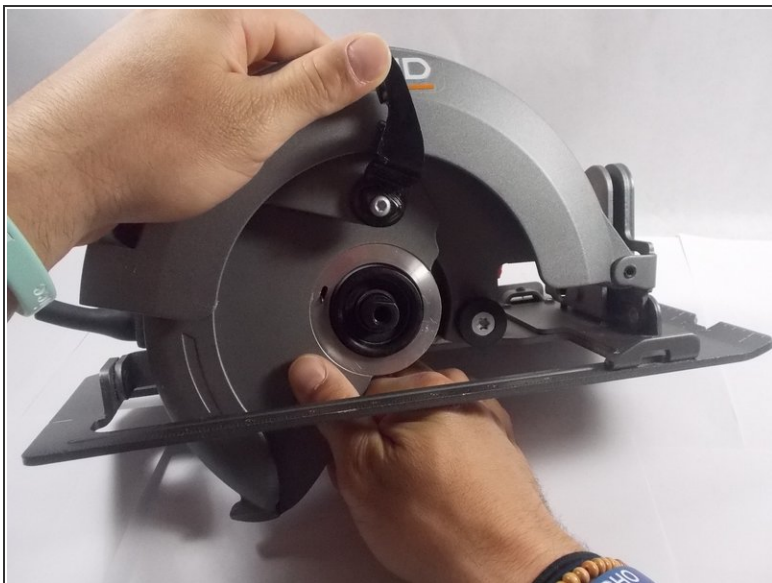
- Remove the external retaining ring with a screwdriver by expanding it and then prying it out.

Step 6



- After removing the external retaining ring, remove (OD50 x ID42 x 0.8t) washer.

Step 7



- Remove the lower blade guard after removing the washer.

To reassemble your device, follow these instructions in reverse order.