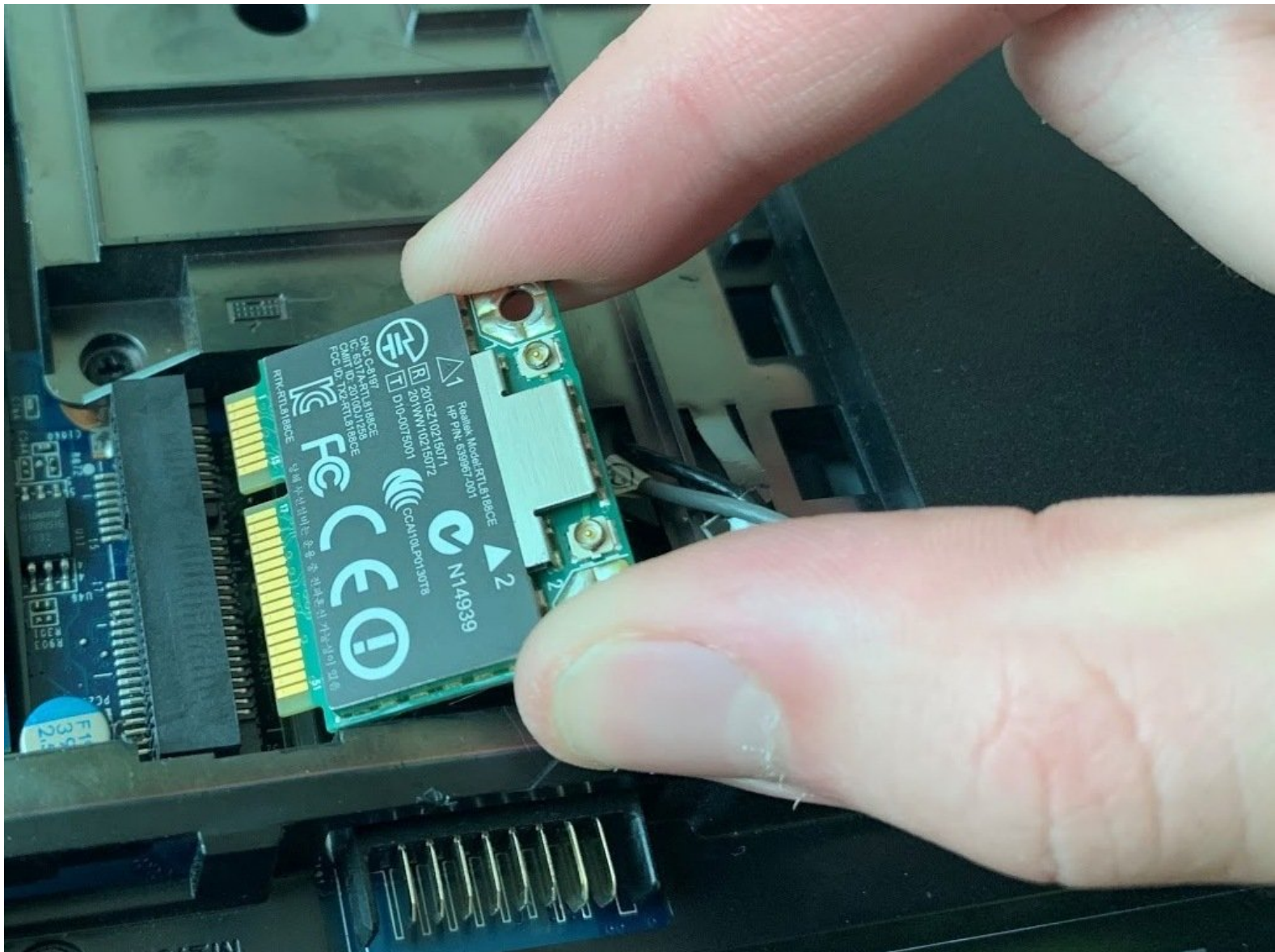


Written By: Rafal Szmyd



## INTRODUCTION

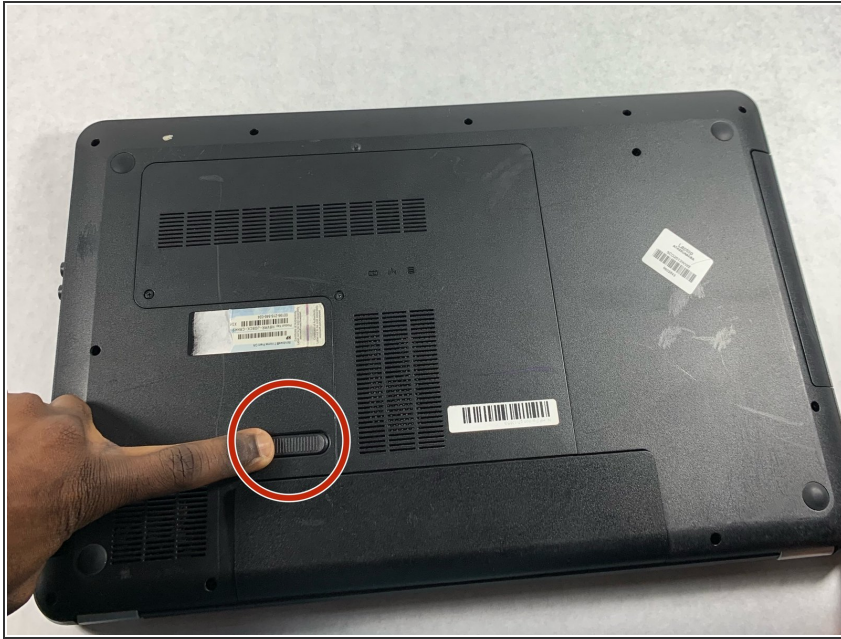
This guide will give step by step instructions on how to remove and replace a WLAN Module in an HP Pavilion g7-1365dx. Use this guide if you are having trouble with the WLAN Module.



### TOOLS:

- [Phillips #0 Screwdriver](#) (1)
  - [Phillips #00 Screwdriver](#) (1)
  - [iFixit Opening Tools](#) (1)
-

## Step 1 — Battery



- ⚠ To prevent injury, make sure the laptop is powered off before removing the battery.
- Flip the laptop so that it is upside down and opens away from you. This exposes the battery, it will be centered at the bottom of the laptop .
- Push the switch above the battery towards the center of the laptop .

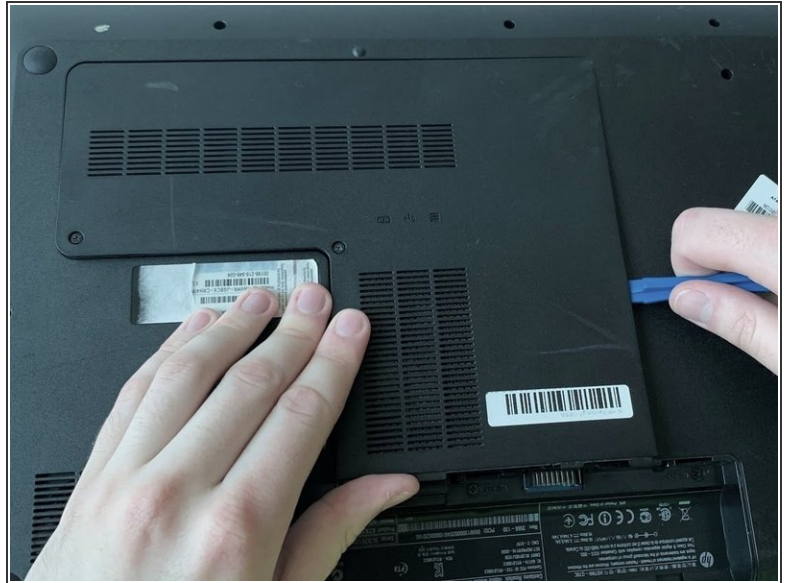
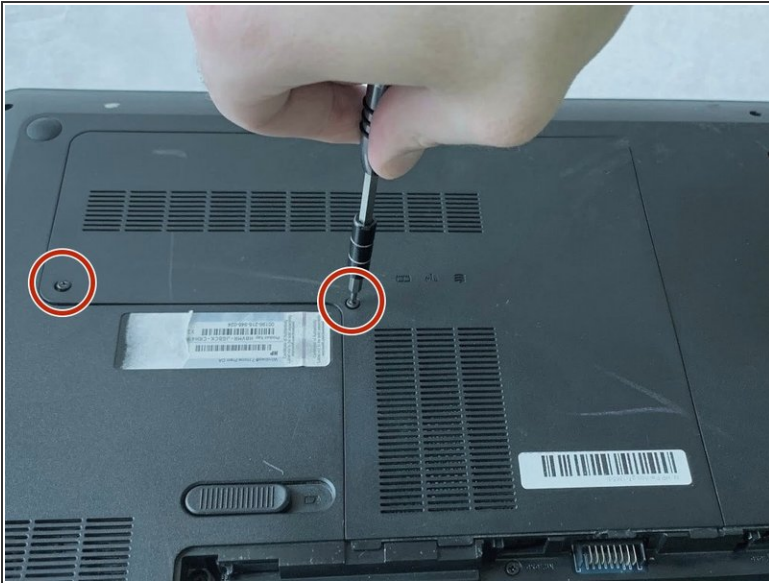
## Step 2



- While pushing the switch, lift the battery by the side closest to the switch up and away from the laptop.

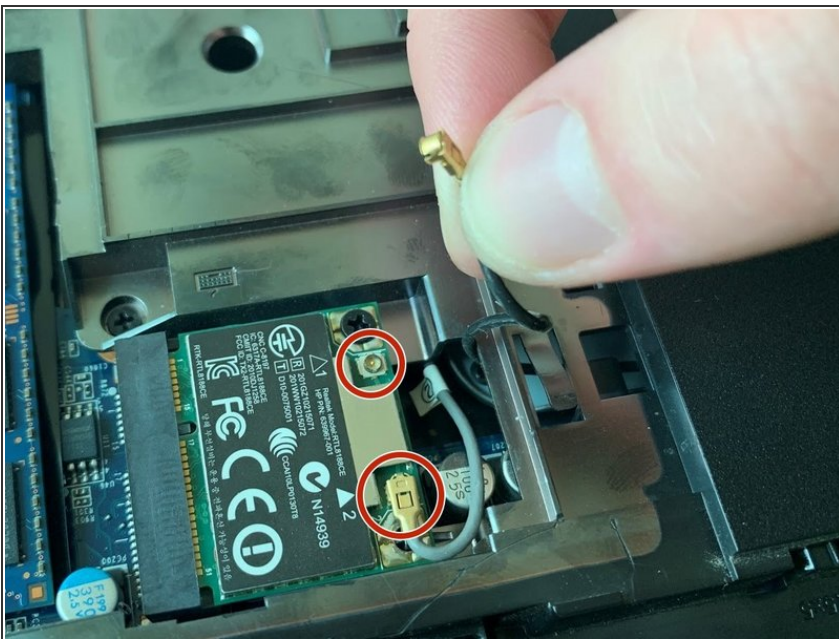


### Step 3 — Service Door



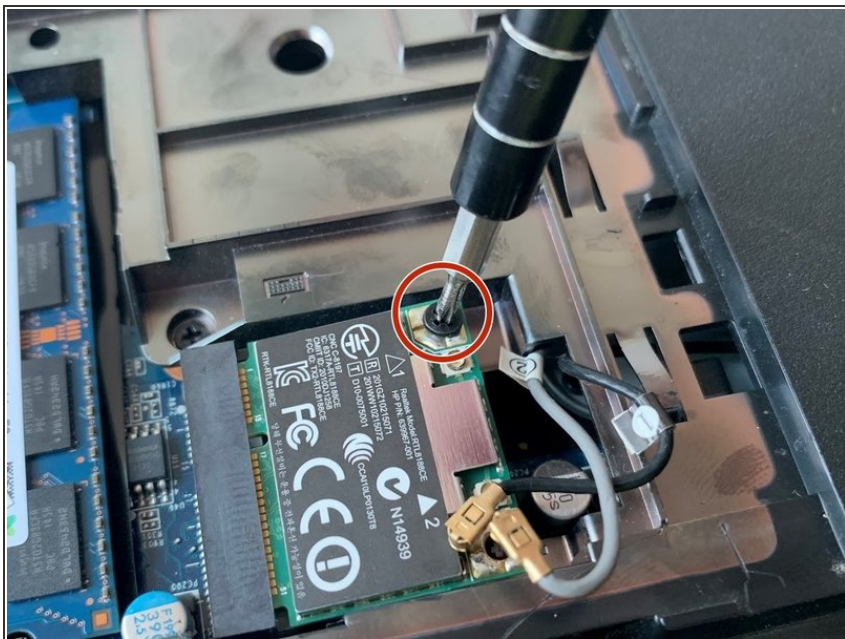
- Using a Phillips size 0 screwdriver, unscrew the 2 Phillips screws.
- Use the opening tool around the edges of the service door to loosen it and remove it.

### Step 4 — WLAN Module



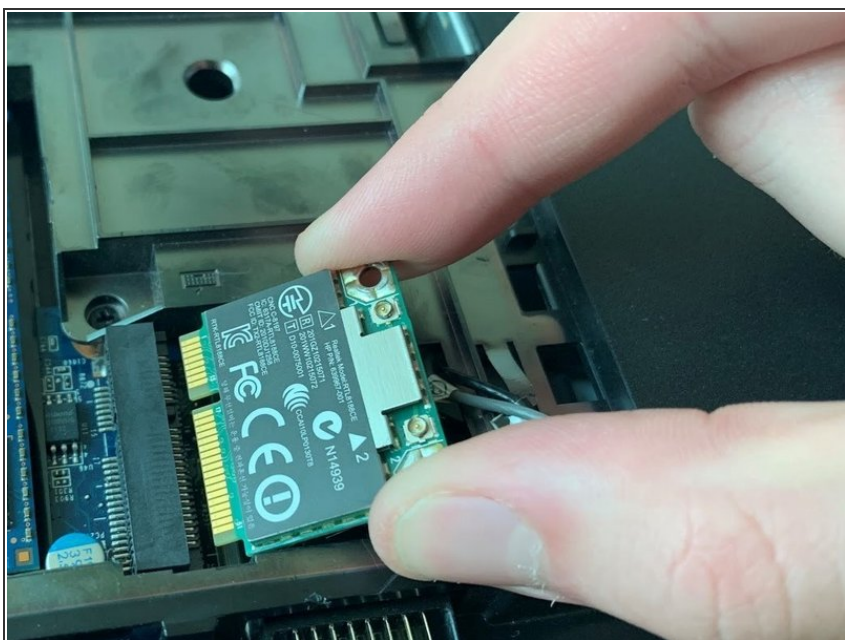
- Gently pull the black and gray coaxial connectors vertically up off of the module.
- ⓘ Make sure to remember which wire was connected to which terminal.

## Step 5



- Use a Phillips #00 screwdriver to take out the 4.7mm screw holding the module.
- ⓘ The module is on a spring and will pop out once the screw is taken out.

## Step 6



- Use your fingers to pull out the WLAN module as shown.

To reassemble your device, follow these instructions in reverse order.