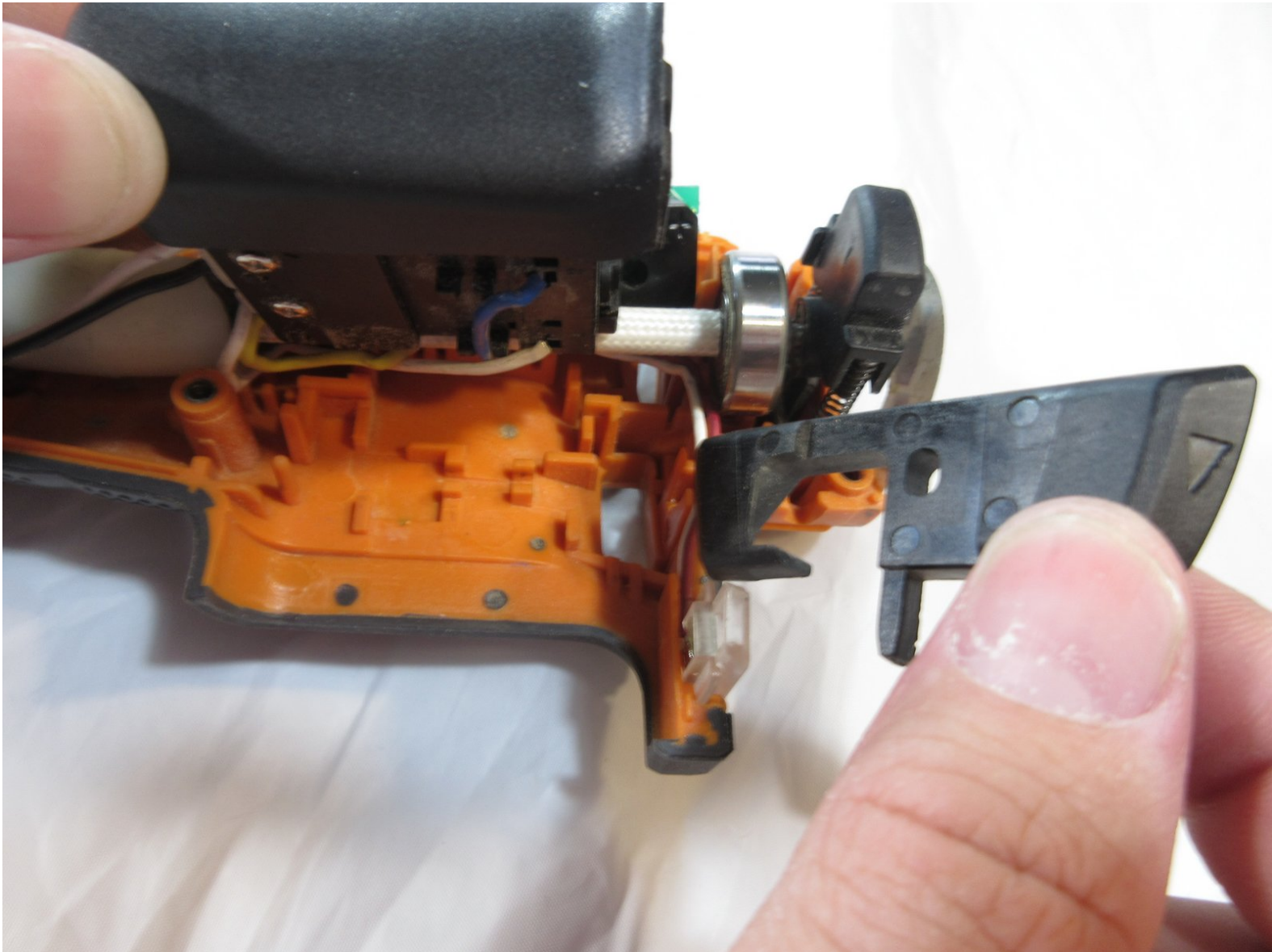




Ridgid JobMax R2851 Series B Directional Button Replacement

This guide will assist in replacing the Ridgid JobMax R2851 Series B directional button.

Written By: Brent Shepherd



INTRODUCTION

This guide is for the directional button on the Ridgid JobMax R2851 Series B. This would be helpful if you have been noticing sudden change in direction of motor operation. If the button has stopped working completely and you find the motor and the button are in good condition.

This repair requires minimal tools listed in the guide, and can be done in a short amount of time. Additionally you should remember to unplug your device before starting any repairs to avoid risk of being electrocuted.



TOOLS:

- [T10 Torx Screwdriver](#) (1)
 - [iFixit Tech Knife](#) (1)
-

Step 1 — Directional Button



 Unplug the device from the wall.

- Orient the device so that the trigger is facing downwards.
- Place your thumb and index finger on the two buttons located on the head of the tool.
- Press the two buttons in and pull the head of the tool off.

Step 2



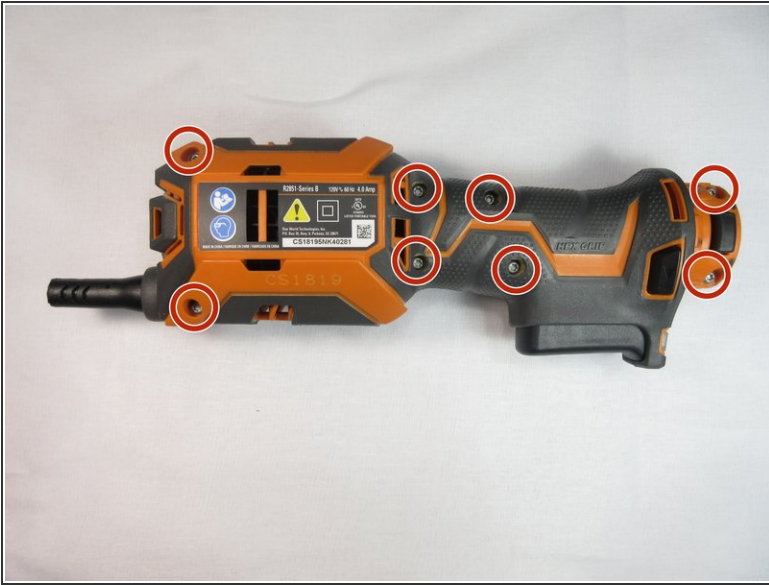
- Loosen all eight 15mm T10 Torx screws.
- ⓘ You do not need to fully remove the screws yet; just loosen them enough that the device shell starts to open.

Step 3



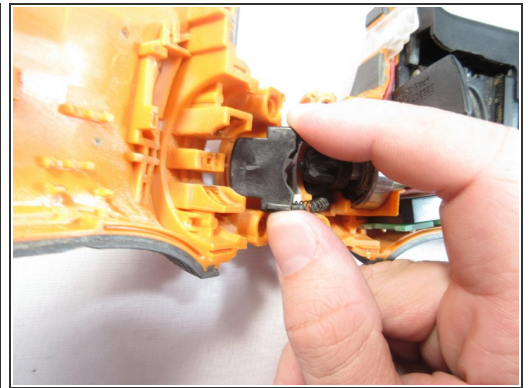
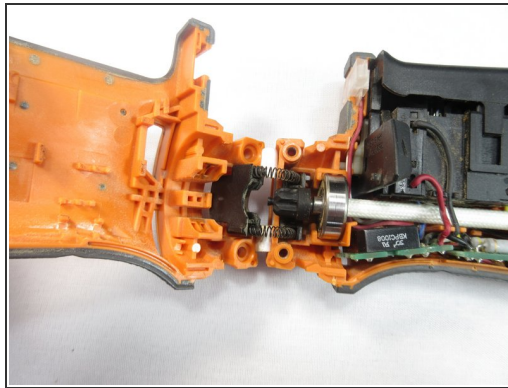
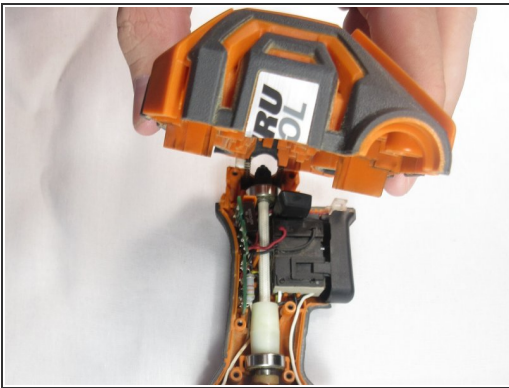
- Orient the device so that the cord end is facing upwards.
- Take a small cutting tool, and cut down the seam in the back, ensuring that you only cut the sticker.
- ⚠ Make a shallow cut to avoid damaging internal hardware.

Step 4



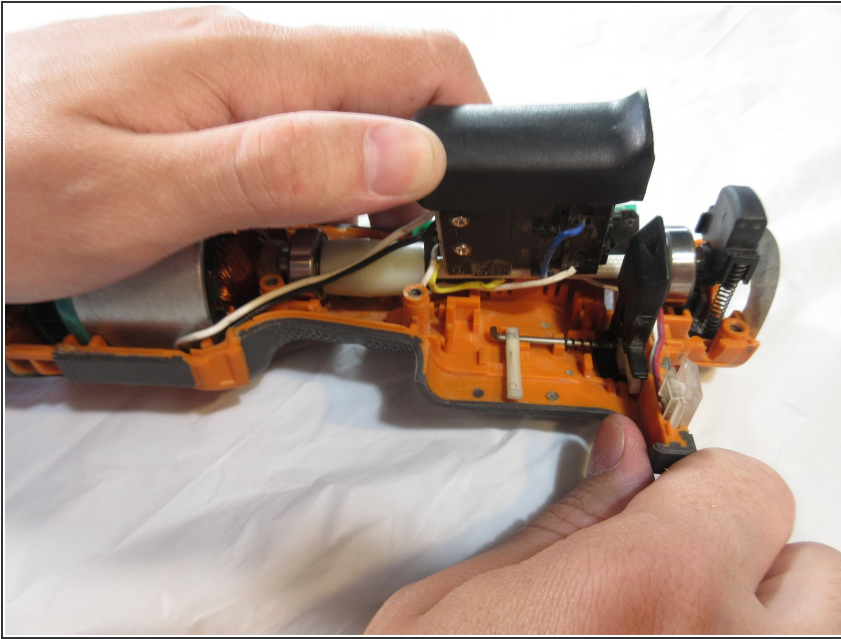
- Completely remove all eight 15mm T10 Torx screws.

Step 5




- Pull the device case off, gripping at the back of the case and rotating it towards the front of the device.
 - Once the device has been separated gently pull on the trigger assembly to remove it from one side of the case.
- ⚠ Watch out for the locking mechanism for the head of the device when removing.

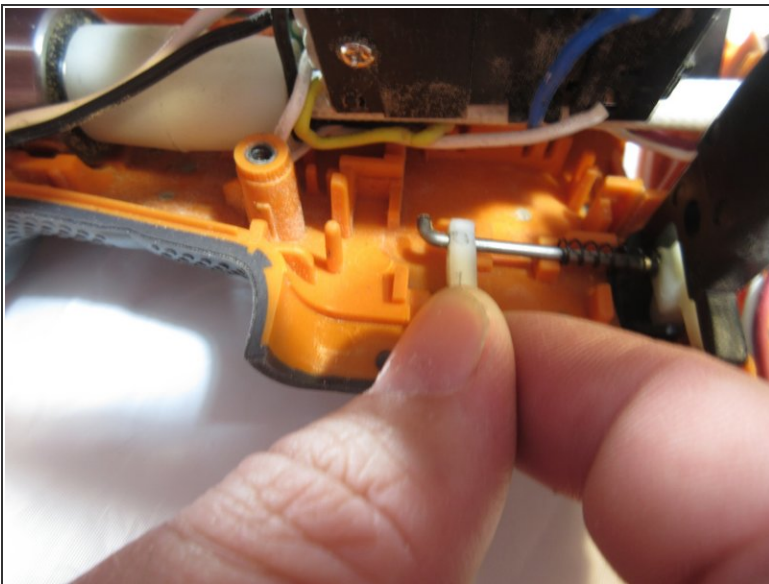
Step 6




- Grab the trigger mechanism, and lift it up and away from the device.

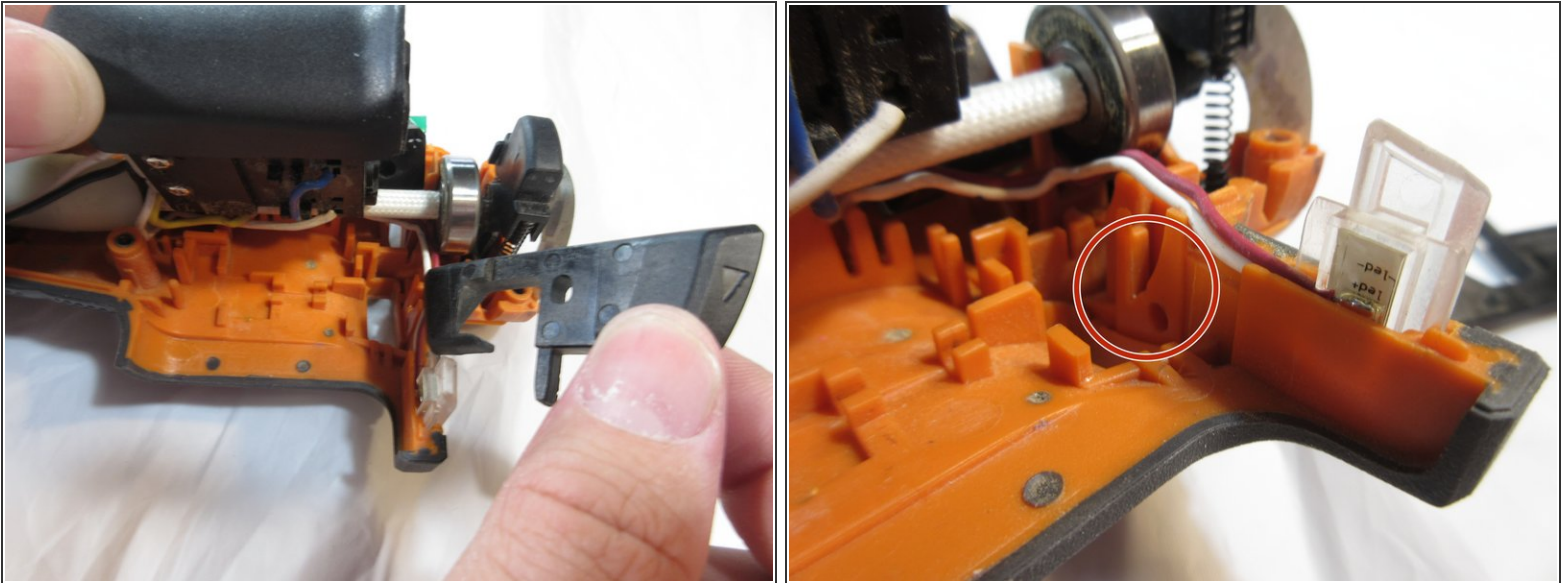
 Be gentle when lifting it out—it is still attached by short wires.

Step 7



- Slide and wiggle the metal rod holding down the directional button.
-  This rod is connected by two small holes in the directional button so moving up and to the right is the best.

Step 8



- Slide the directional button up and out of the device.
 - Hole and slot for reassembly
- ✦ After the button is replaced, the metal rod fits into a small hole and slot to the right of the button. The tiny spring has to be slid over to set it in place.

To reassemble your device, follow these instructions in reverse order.