



# Open a Saeco Minuto

Open a Saeco Minuto coffee machine.

Written By: VauWeh



---

## INTRODUCTION

This guide shows how to open a Saeco Minuto coffee machine. There are a lot of different versions of this coffee machine, also under the Philips brand. The pictures show a Philips HD 8834.

---




### TOOLS:

- [T10 Torx Screwdriver](#) (1)
  - [iFixit Opening Tools](#) (1)
-

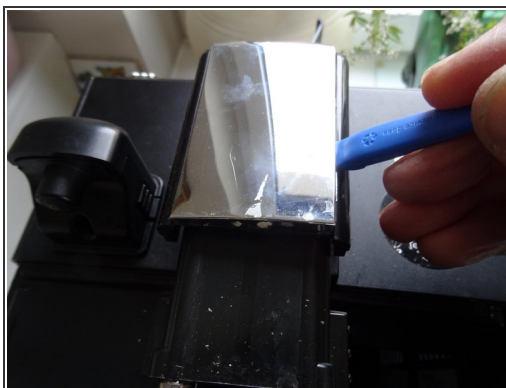
## Step 1 — Open a Saeco Minuto



 Disconnect the power plug!

- Remove the water tank.
- Remove all the coffee beans.
- Remove the brewing assembly.
- Remove the drip tray and the coffee grounds drawer.

## Step 2



- Pry up with a plastic opening tool at the bottom edge of the chrome-plated cover to lift up the coffee dispensing spout. This cover is often very tight, so you have to pry hard and hope that the part does not break.
- When the lower edge of the spout is released, you can pry on the side edge until the chrome cover comes off completely.



### Step 3



- Remove the Torx T10 screw at the top edge of the coffee dispensing spout.

### Step 4



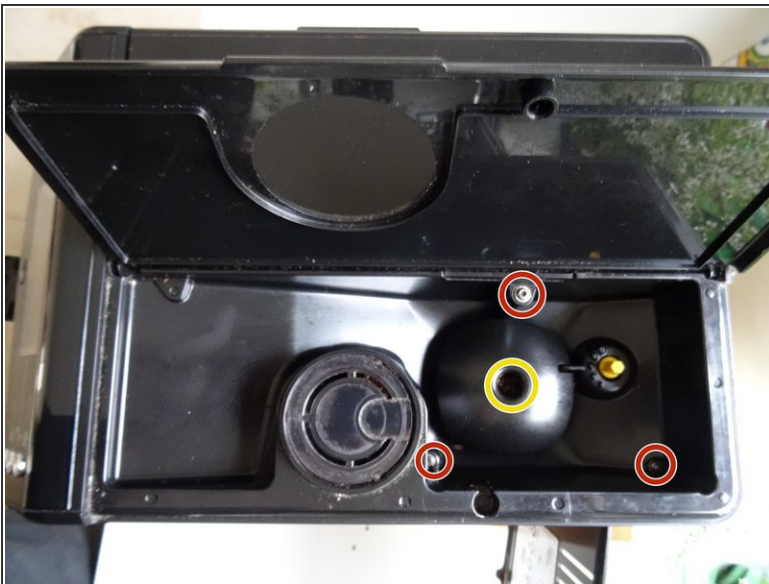
- Lift off the black cover over the coffee dispensing spout. The sliding nozzles will come off at the same time.

## Step 5



- Remove both Torx T10 screws on the left and right at the bottom edge of the coffee dispensing spout.
- Pull off the hot water dispensing spout.

## Step 6

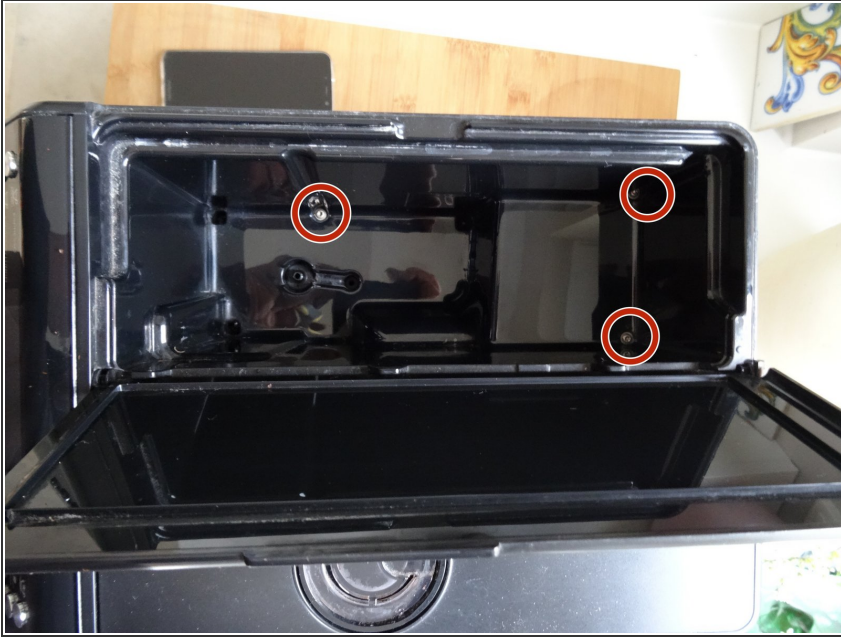


- Remove the Torx T20 screw on the finger guard of the grinder. Remove the finger guard.
- ⓘ If the screws are covered with coffee remains, you should first clean them with a needle and a vacuum cleaner.
- Remove three Torx T10 screws in the bean container.

This document was generated on 2021-02-10 04:27:27 AM (MST).



## Step 7



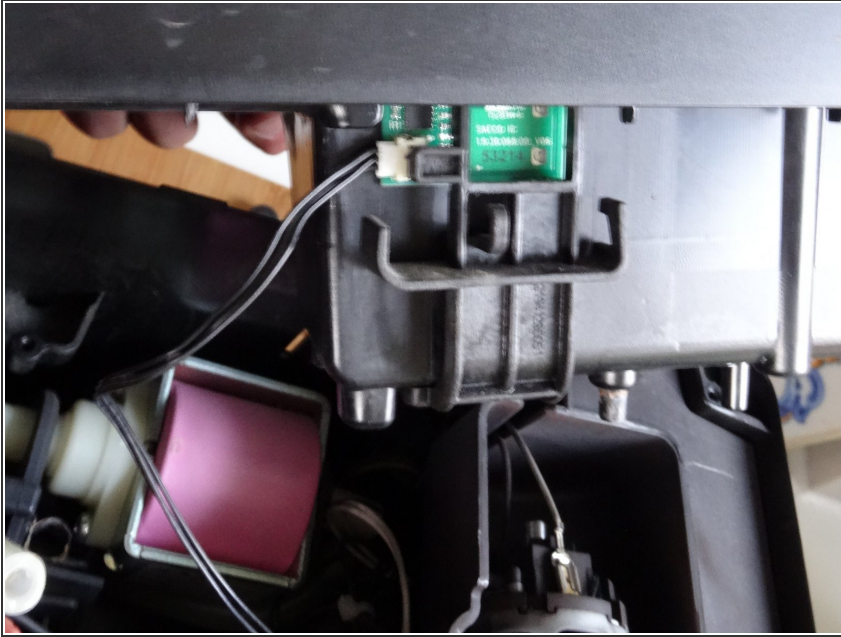
- Remove the three Torx T10 screws under the water tank.

## Step 8



- Grab the upper cover on the sides and lift it up.
- ⓘ The cover is still connected with a cable and a tube.
- Take off the silicone tube.

## Step 9



- Remove the water level sensor cable from its brackets.
- Carefully remove the plug from the water level sensor.
- The cover is now free and can be removed.

Repeat the steps in reverse order to reassemble your device.