



Milwaukee 5262-21 Power Cord Replacement

Use this guide to replace the power cord in your Milwaukee 5262-21.

Written By: Adrien Andrade-Cain



INTRODUCTION

In this guide, we will be replacing a power cord that is not supplying power to your device. You will be replacing a power cord, that is typically common to become faulty on this device. You will be removing 4 bolts.



TOOLS:

- [T20 Torx Screwdriver](#) (1)
- [H1.5 Allen Bit](#) (1)



PARTS:

- [Cord Protector](#) (1)
- [120V Power Cord](#) (1)

Step 1 — Housing Assembly



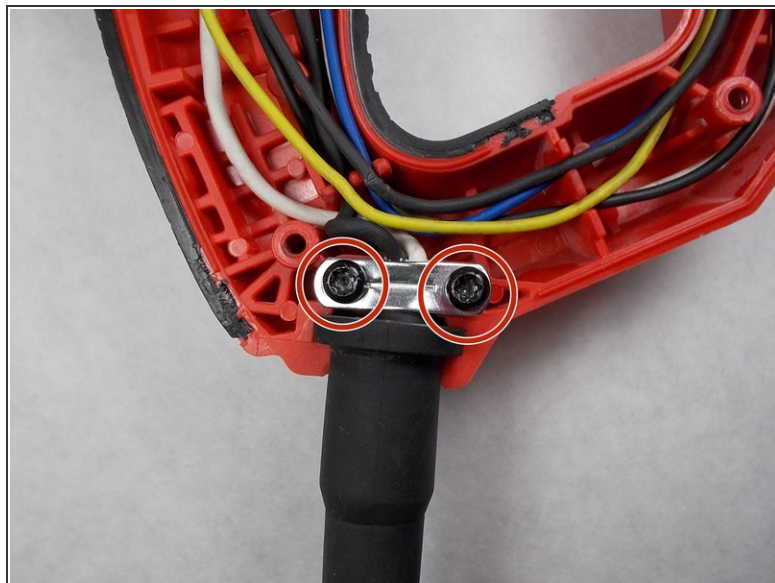
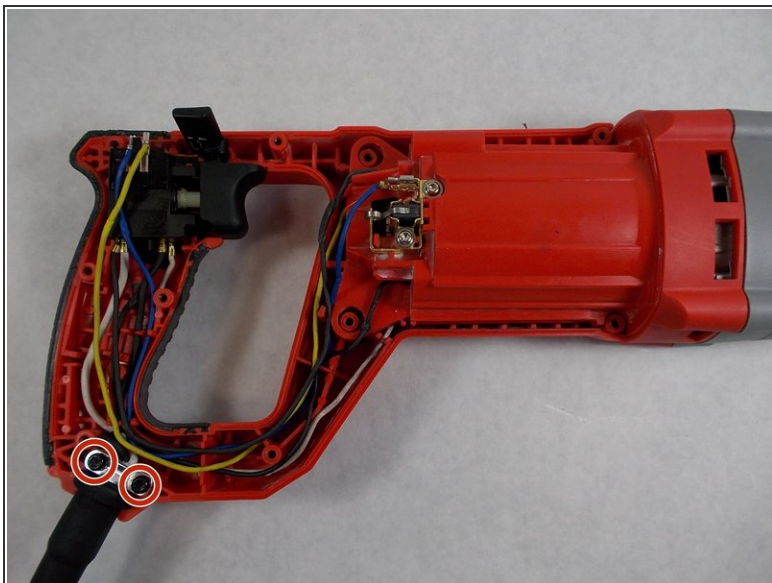
- Remove the ten 19mm T20 Torx screws shown in red.

Step 2



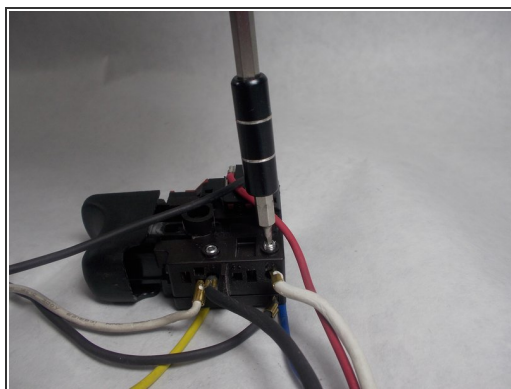
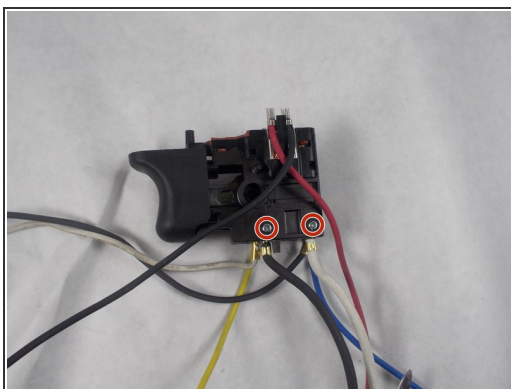
- Remove the red Housing Assembly by lifting it up off of the tool.

Step 3 — Power Cord



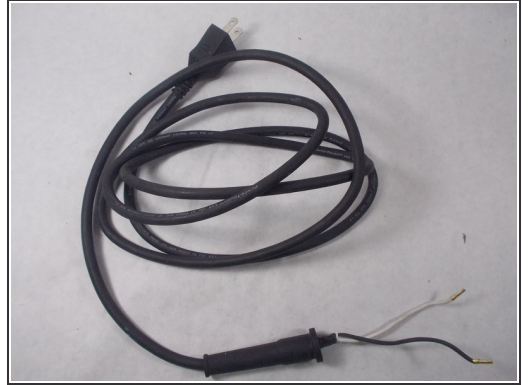
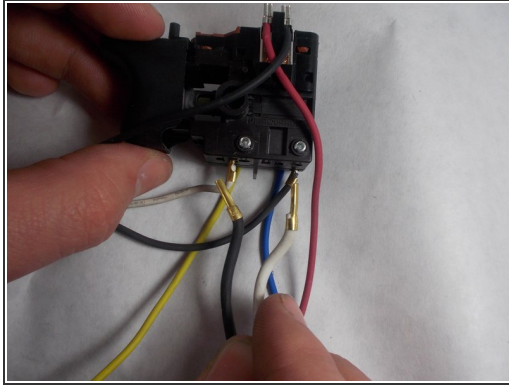
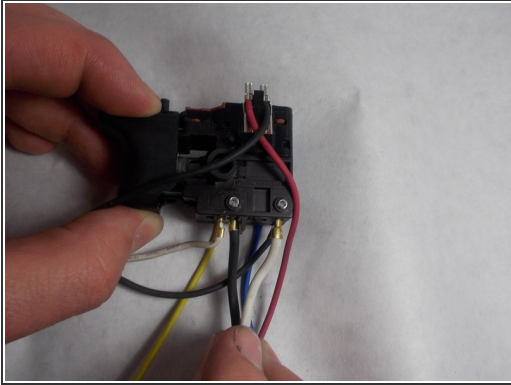
- Remove the two 11.5mm T-15 screws shown in red.

Step 4



- Follow the black and white cord to the trigger.
- On the trigger there are two small bolts that you have to loosen.
- Loosen them slightly with a H - 1.5 bit.

Step 5



- Once the bolts are loose you can pull both cords straight out from the trigger.
- Pull the cable from the chassis and put it to the side and it has been successfully removed.

To reassemble your device, follow these instructions in reverse order.