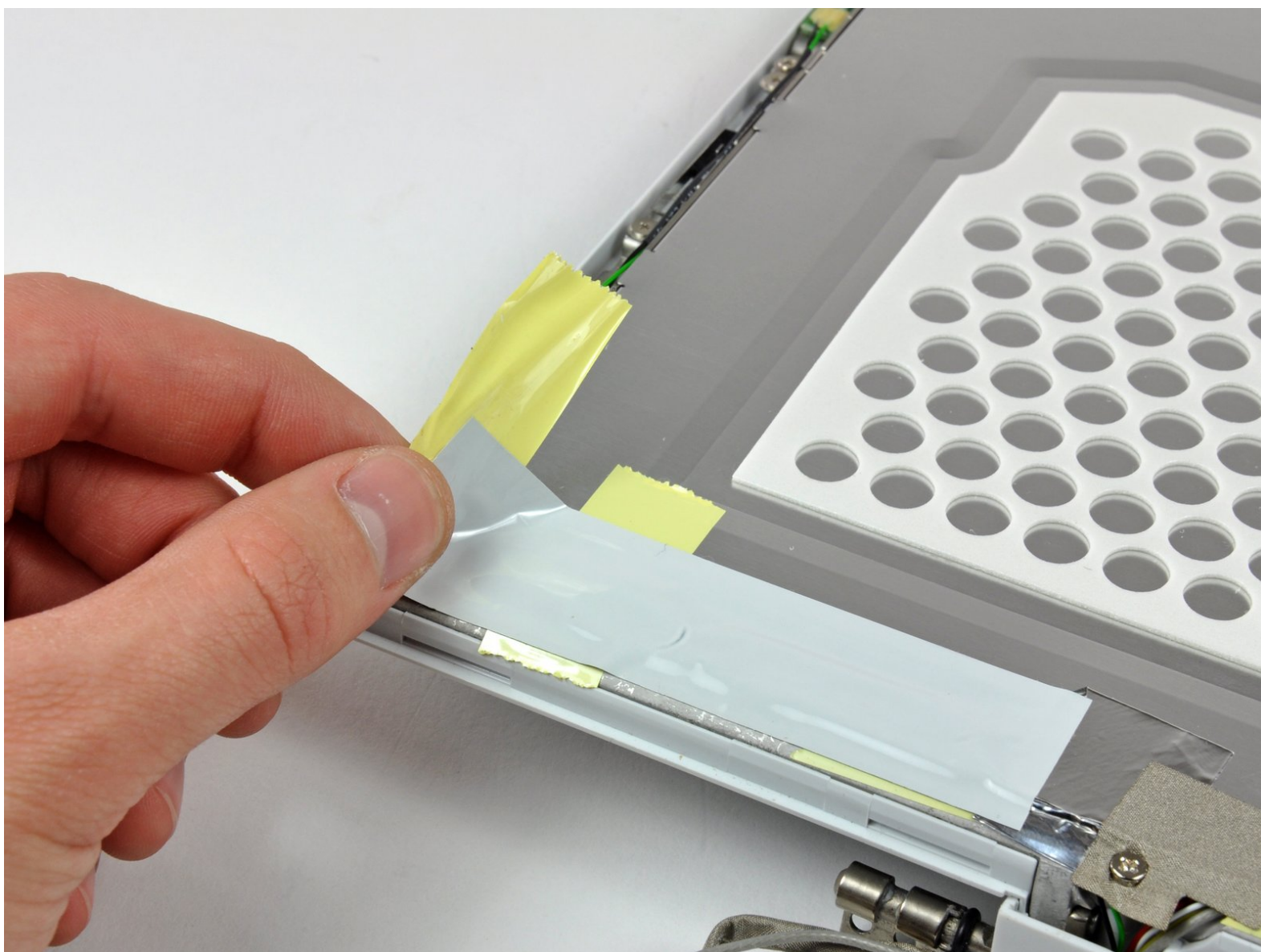




iBook G4 12" 800 MHz-1.2 GHz LCD Cover Replacement

Written By: Andrew Bookholt



INTRODUCTION

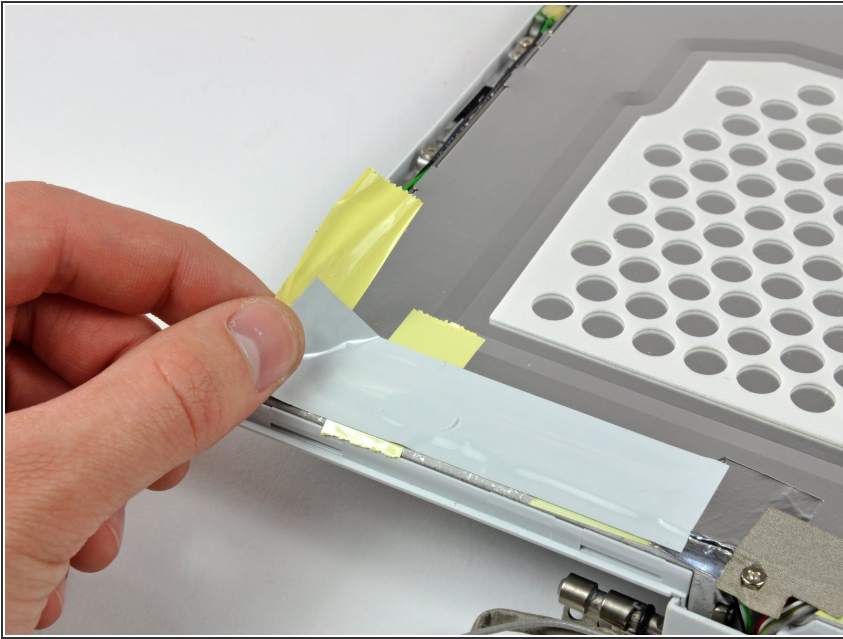
This guide is an internal private guide that serves as a prereq.



TOOLS:

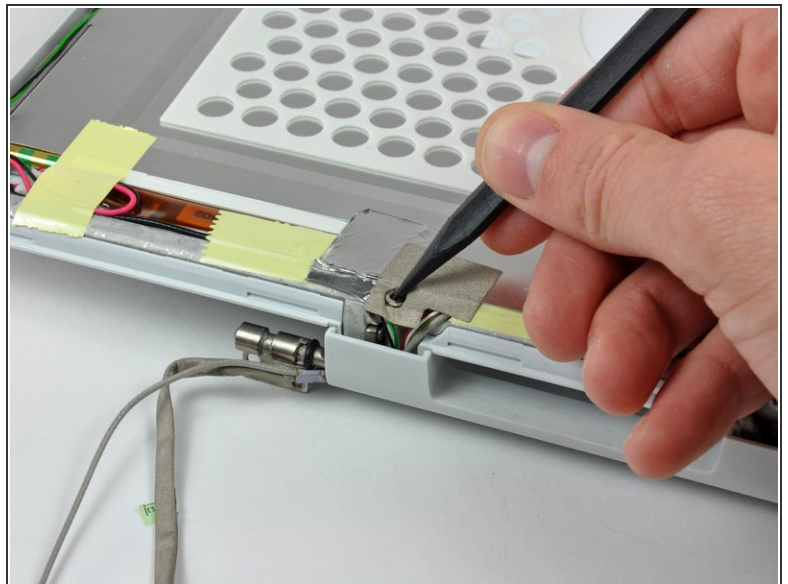
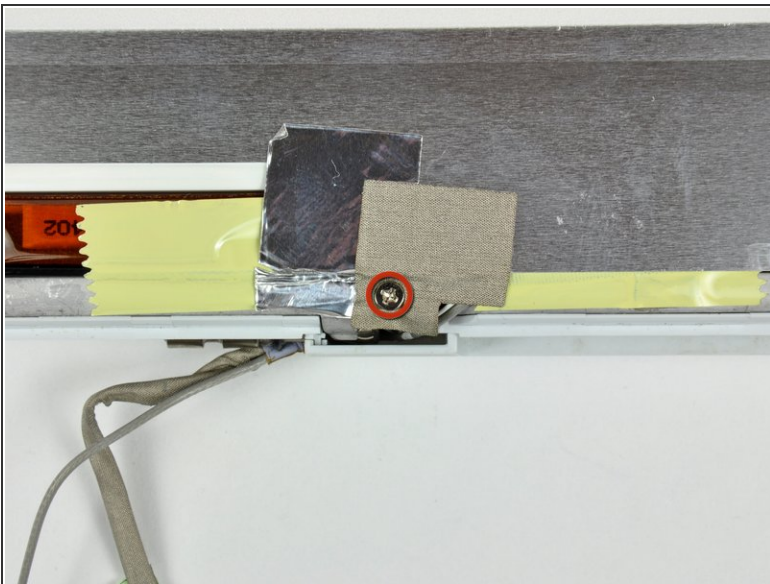
- [Phillips #00 Screwdriver](#) (1)
 - [Spudger](#) (1)
-

Step 1 — LCD Cover



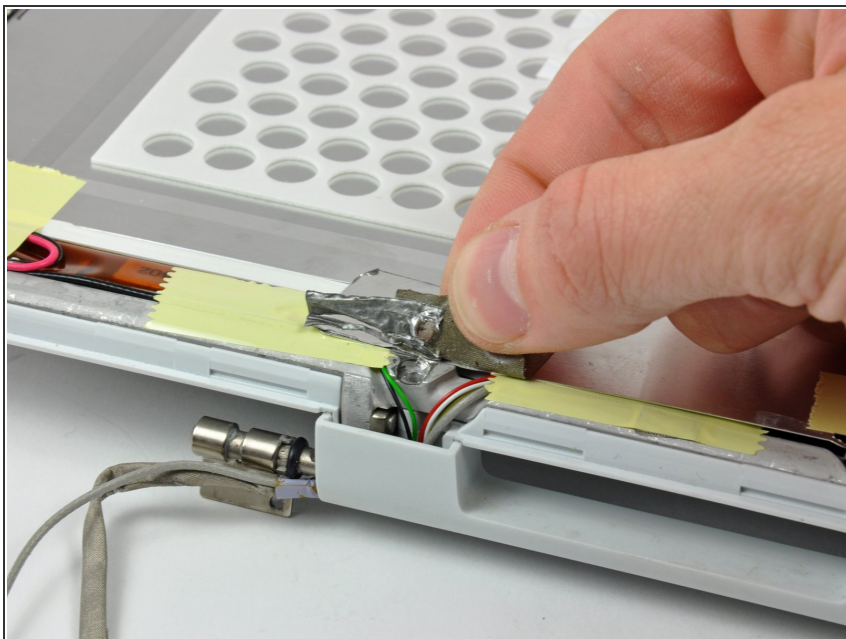
- Remove the large piece of tape near the lower right corner of the display.

Step 2



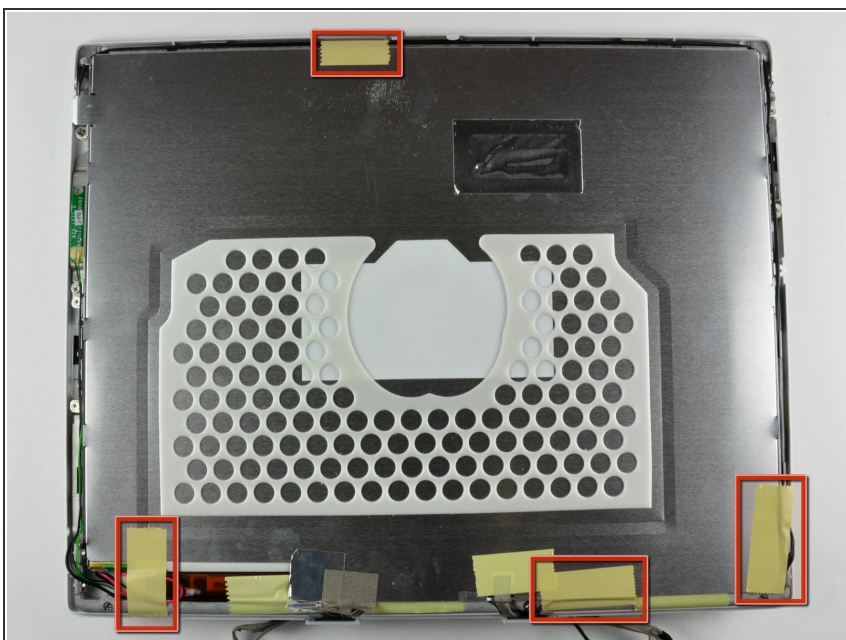
- Remove the single screw inserted through the piece of EMI tape near the bottom edge of the display (it's the first of the two clutch cover screws).
- Use the tip of a spudger to remove the small washer under the screw you just removed.

Step 3



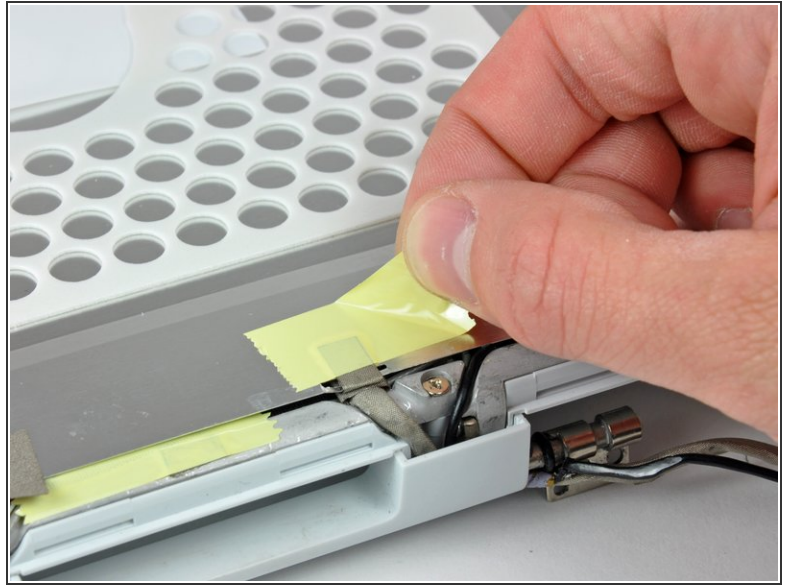
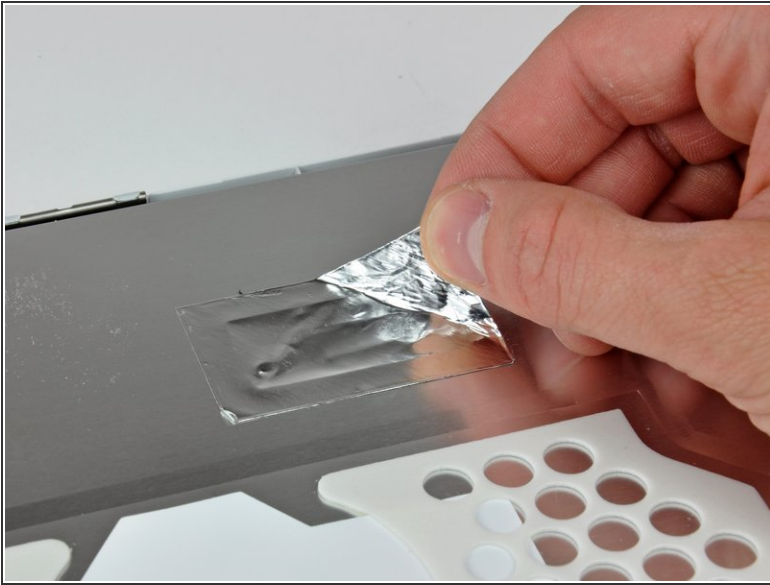
- Peel the aluminum/EMI tape as one piece off the cast aluminum frame of the clutch hinges.
- ⓘ It is not necessary to peel the tape off the thin steel LCD cover.

Step 4



- Remove the pieces of readily removable tape from around the perimeter of the display.

Step 5



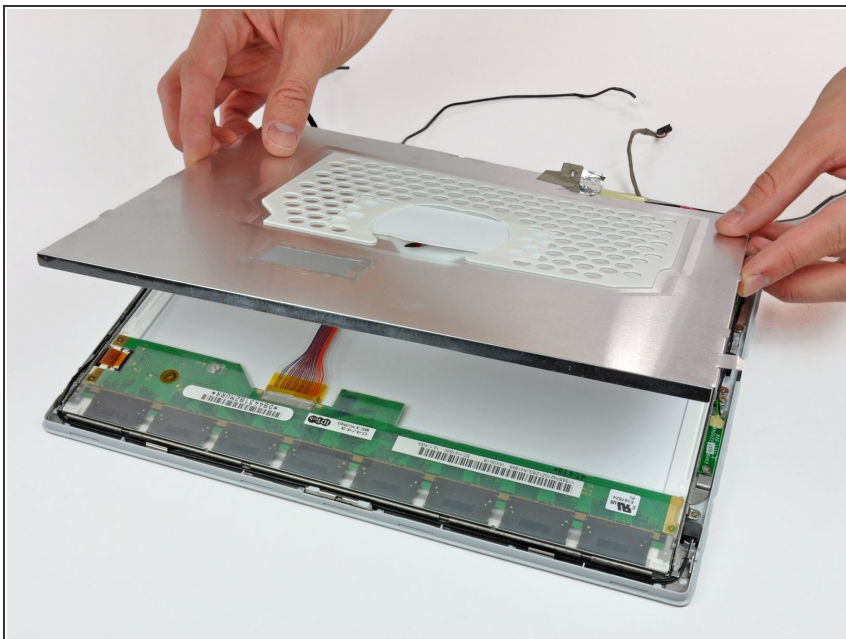
- Remove the piece of aluminum tape near the center of the LCD cover.
- Peel back the piece of tape securing the display data cable ground loop to the thin steel LCD cover.

Step 6



- Remove the two Phillips screws securing each side of the LCD to the clutch hinge frame (four screws total).

Step 7



- Lift the thin steel LCD cover off the LCD.

To reassemble your device, follow these instructions in reverse order.