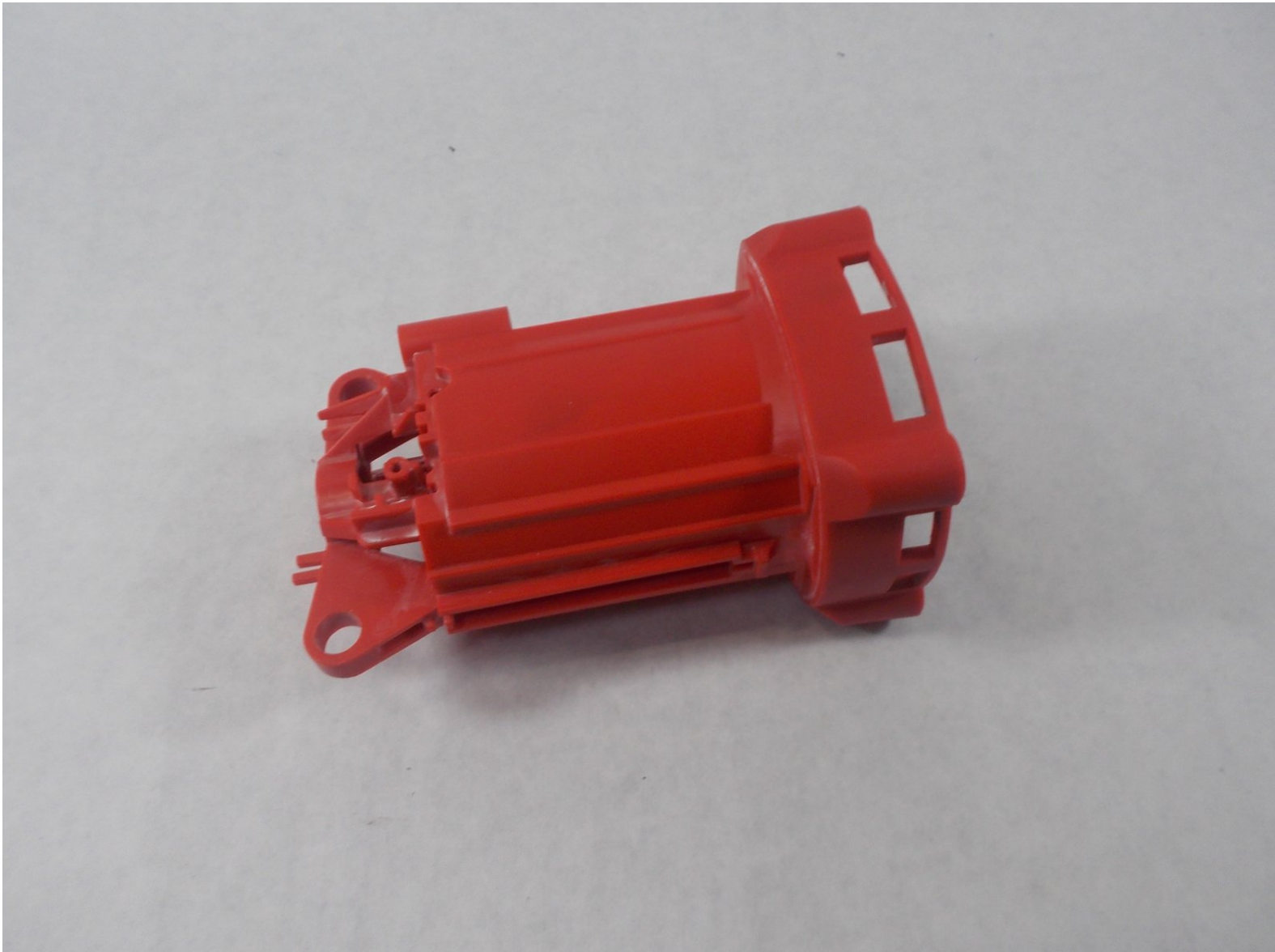




Milwaukee 5262-21 Motor Housing Replacement

This guide will detail how to replace the motor housing in the Milwaukee 5262-21.

Written By: Andrew Floyd



INTRODUCTION

If you need to replace the motor housing in the rotary hammer, use this guide to take apart the device. You will be following a step by step guide, that will help you in replacing the motor house, you may also refer to the pictures attached to each step for guidance.



TOOLS:

- [T20 Torx Screwdriver](#) (1)
- [T10 Torx Screwdriver](#) (1)
- [T15 Torx Screwdriver](#) (1)
- [Metal Spudger](#) (1)
- [H1.5 Allen Bit](#) (1)



PARTS:

- [Milwaukee 5262-21 motor housing](#) (1)

Step 1 — Housing Assembly



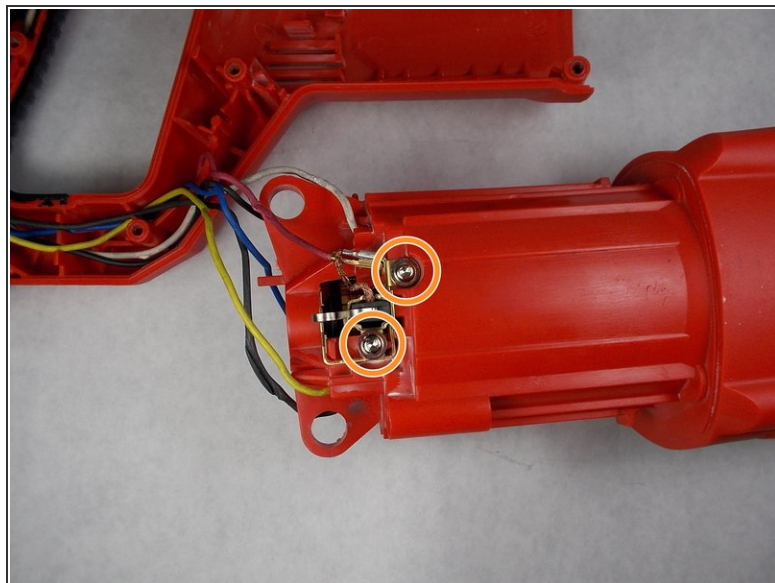
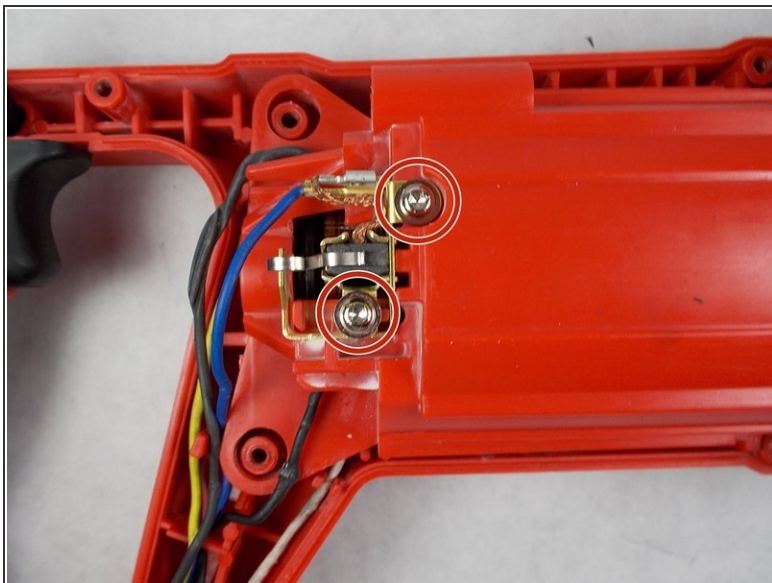
- Remove the ten 19mm T20 Torx screws shown in red.

Step 2



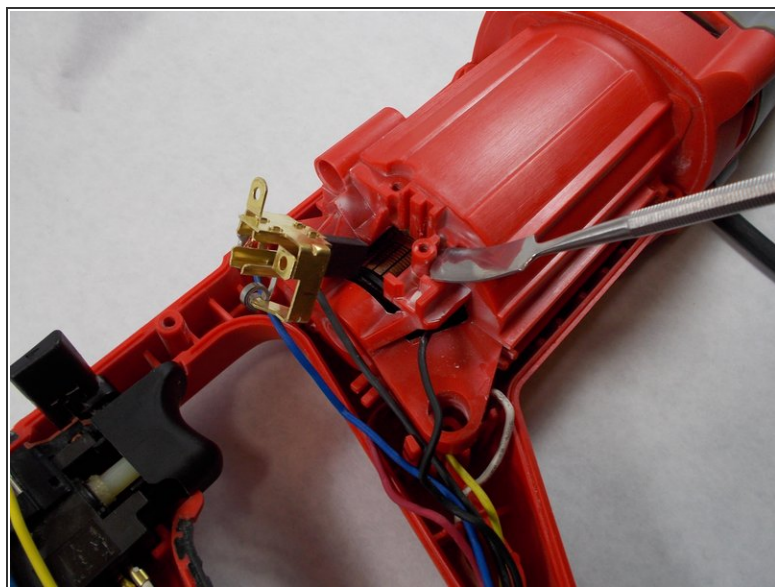
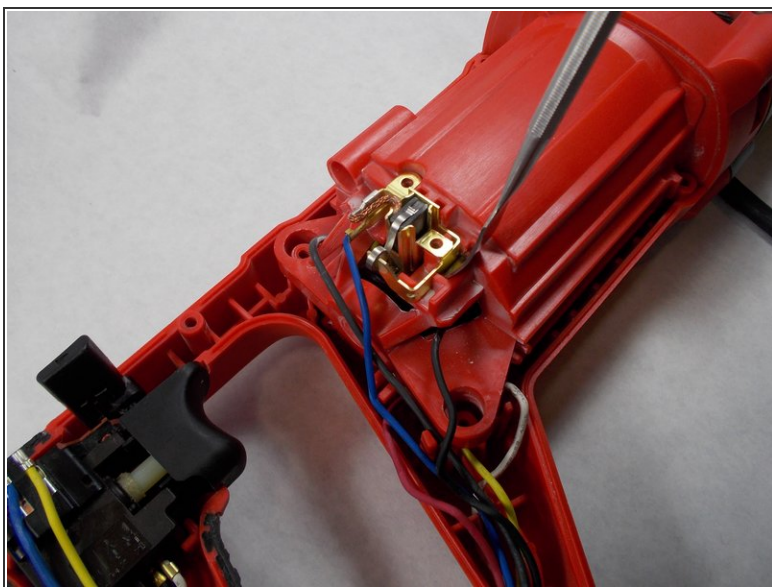
- Remove the red Housing Assembly by lifting it up off of the tool.

Step 3 — Fan Baffle



- Now the two 10mm T-10 screws shown in red can be removed.
- Next, remove the two 10mm T-10 screws located on the other side of the tool shown in orange.

Step 4



- Using the metal spudger, remove each brush holder as shown in the images.

Step 5



- Remove the four 37mm T-20 screws shown in red. These screws attach the gear housing to the motor housing.

Step 6



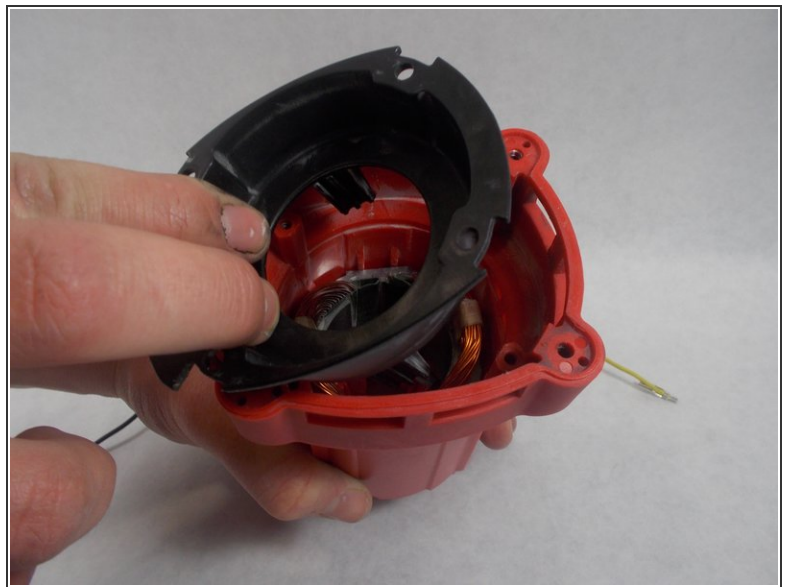
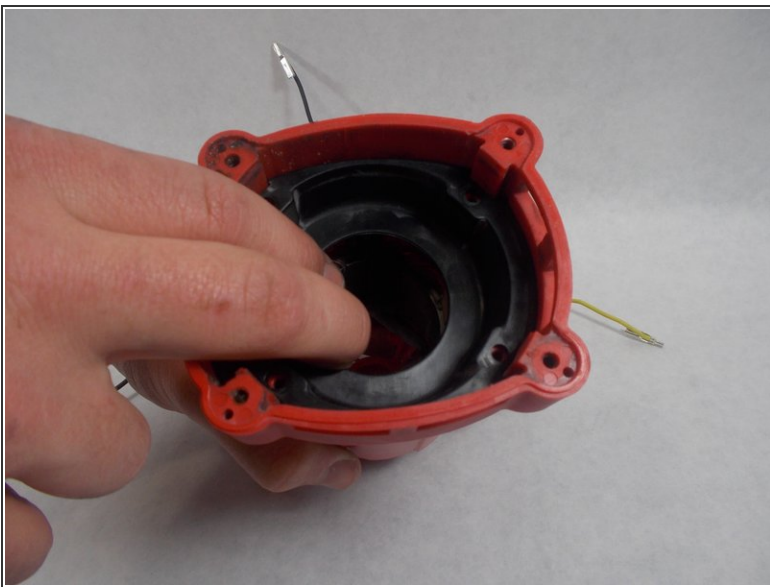
- After removing the four screws, pull apart the the two sections.

Step 7



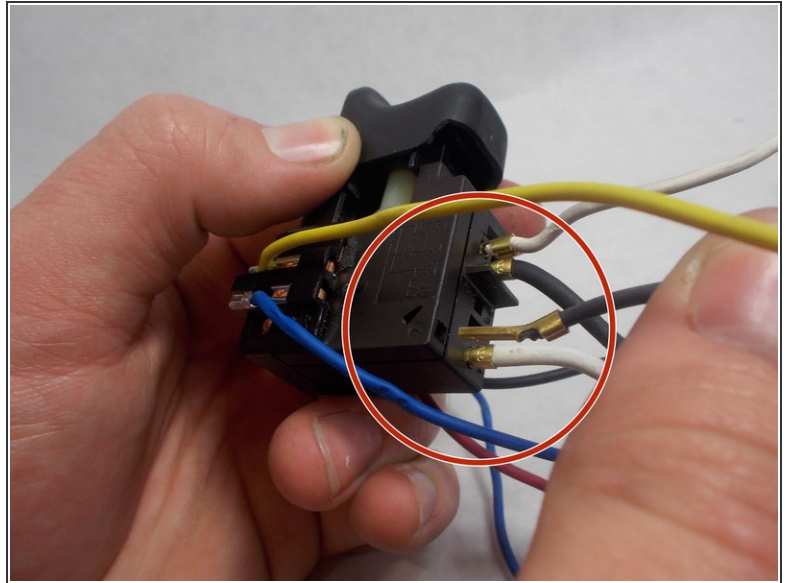
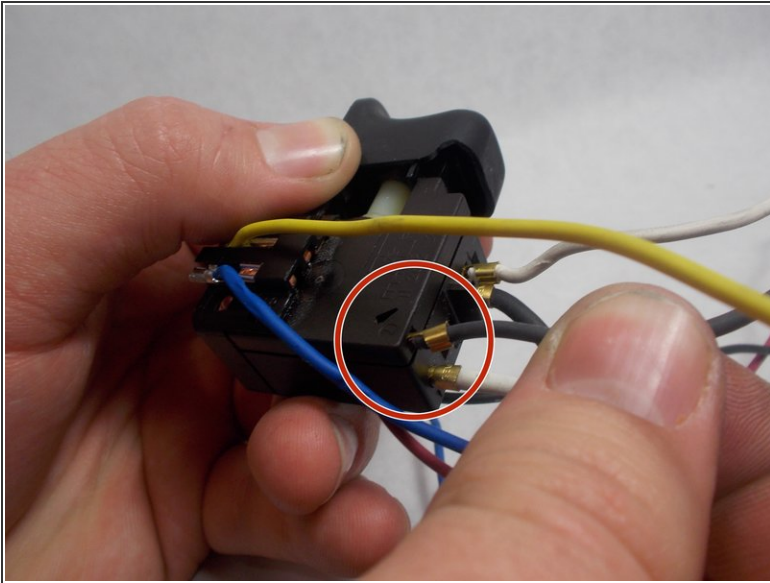
- Remove the four 12mm screws with a T-15 Torx screwdriver shown in red.
- These screws hold the fan baffle in place.

Step 8



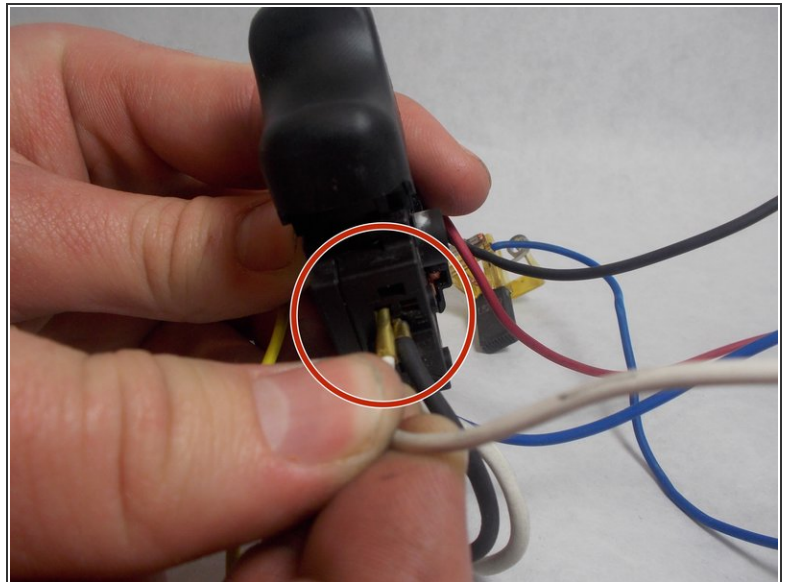
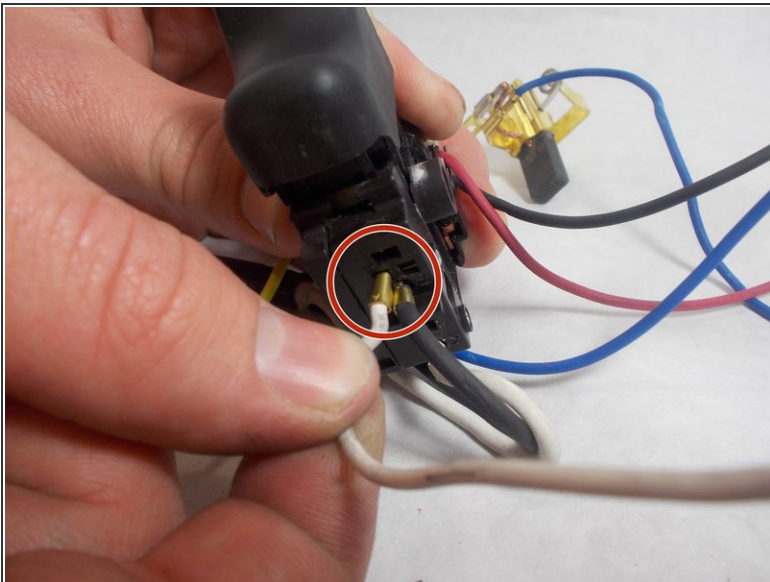
- Remove the fan baffle by pulling it out.

Step 9 — Motor Housing



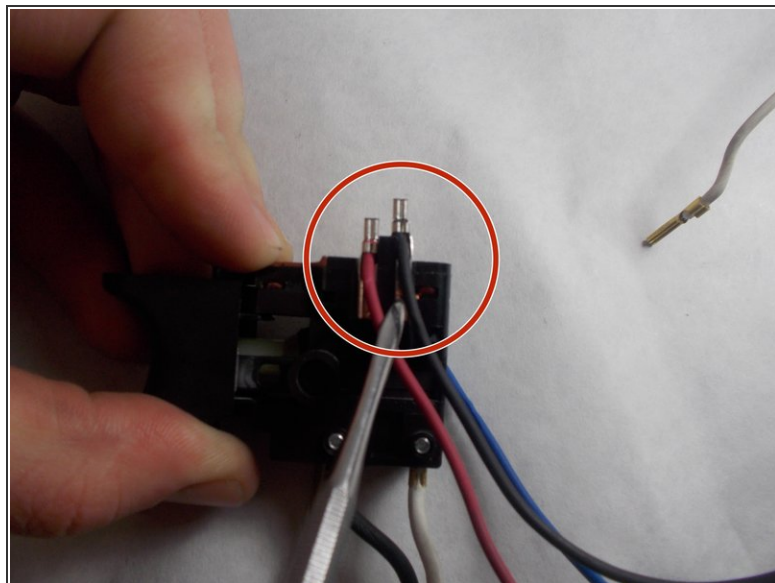
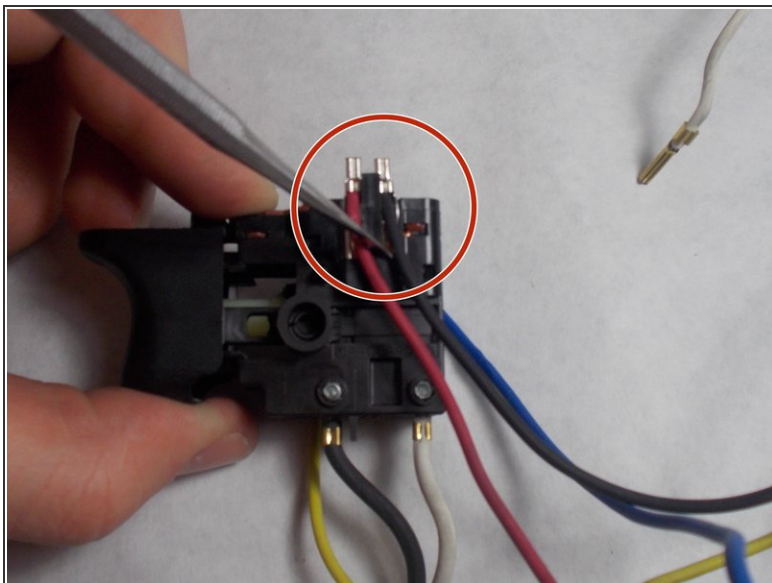
- Pull the black wire (shown in the image) out of the trigger assembly.

Step 10



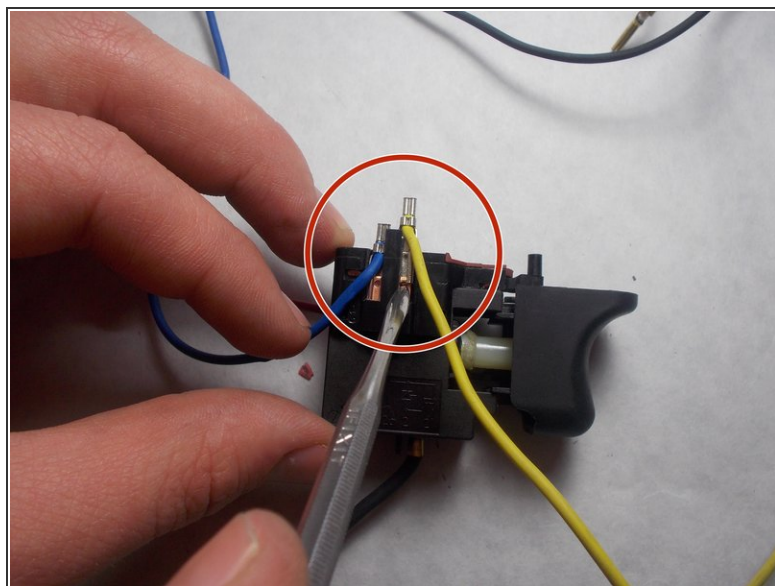
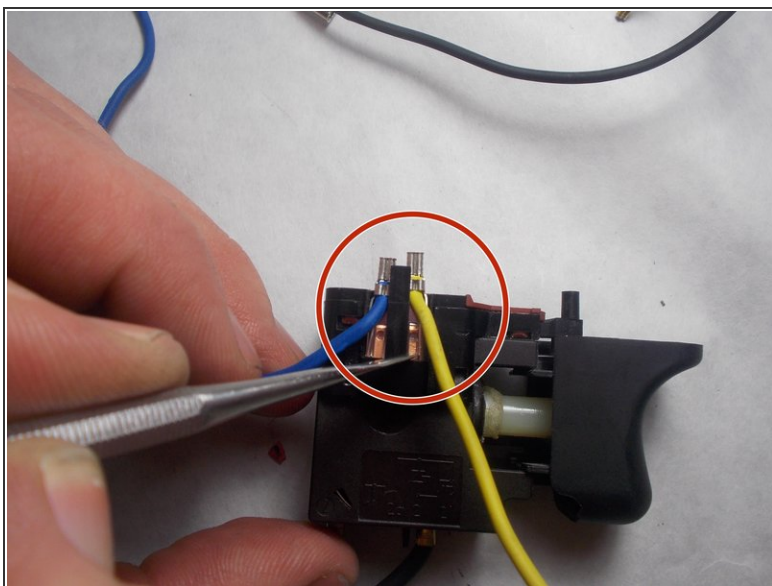
- Pull the white wire (shown in the image) out of the trigger assembly.

Step 11



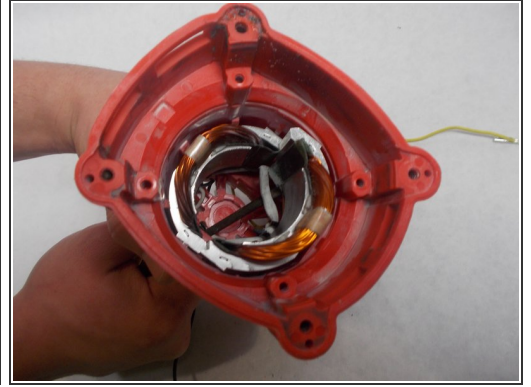
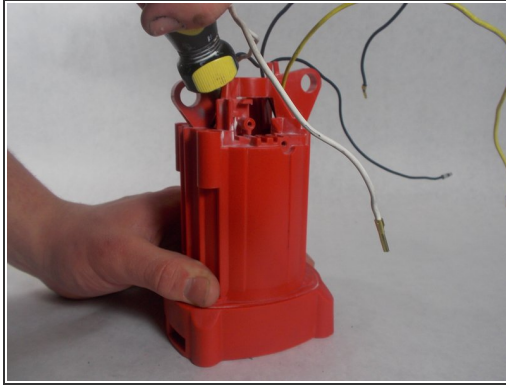
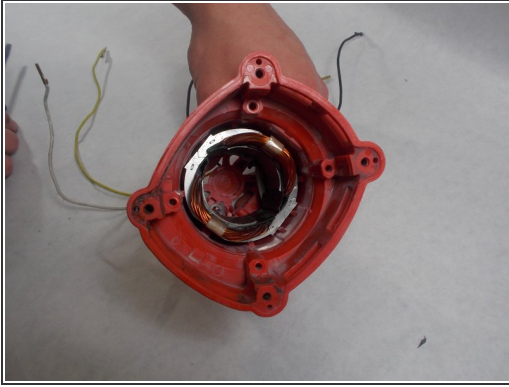
- Using a metal spudger slide the black wire (shown in the image) out of the trigger assembly.

Step 12



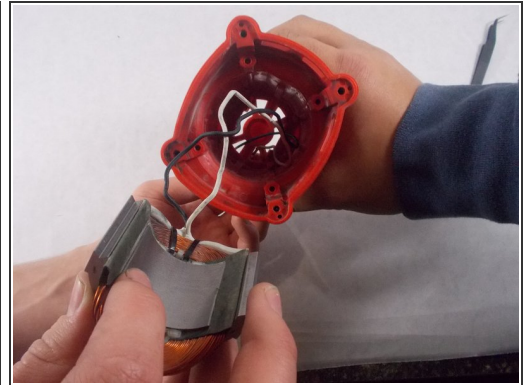
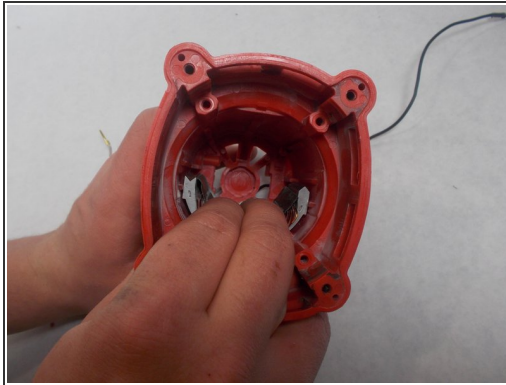
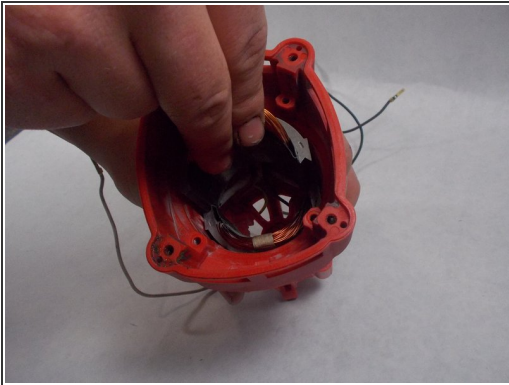
- Using a metal spudger slide the yellow wire (shown in the image) out of the trigger assembly.

Step 13



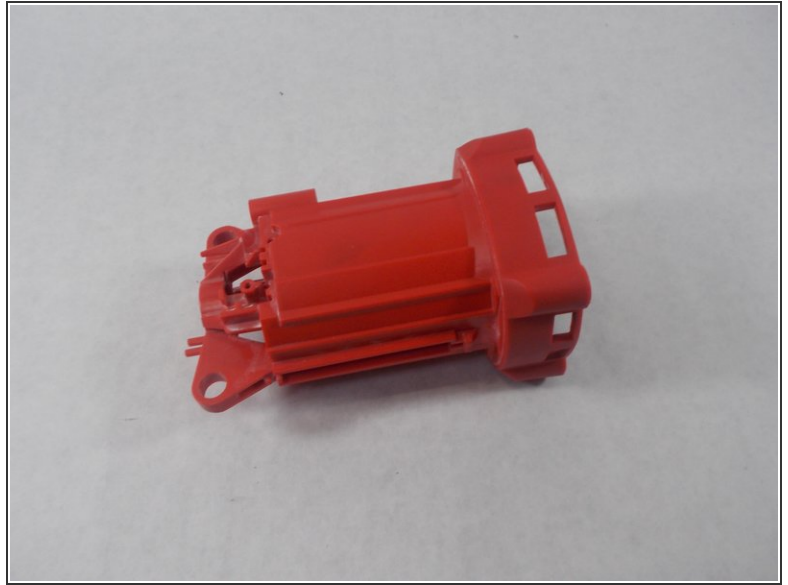
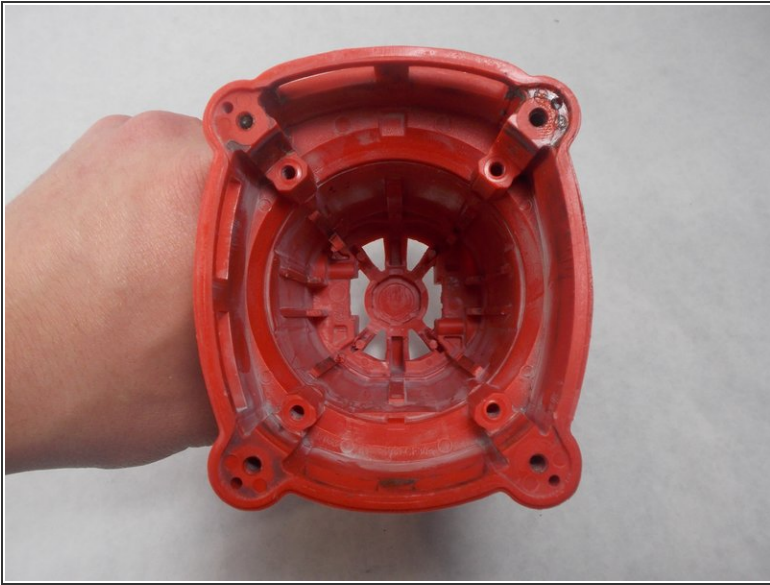
- After disconnecting the wires, push the 120v Field Assembly out of the motor housing.
- ⓘ You may need to use a screwdriver to push the assembly from behind.

Step 14



- Once the assembly is loose, pull each half out of the housing.
- ⓘ Note the orientation of how the halves sit together in the housing before removal.

Step 15



- Remove the motor housing from the device.

To reassemble your device, follow these instructions in reverse order.