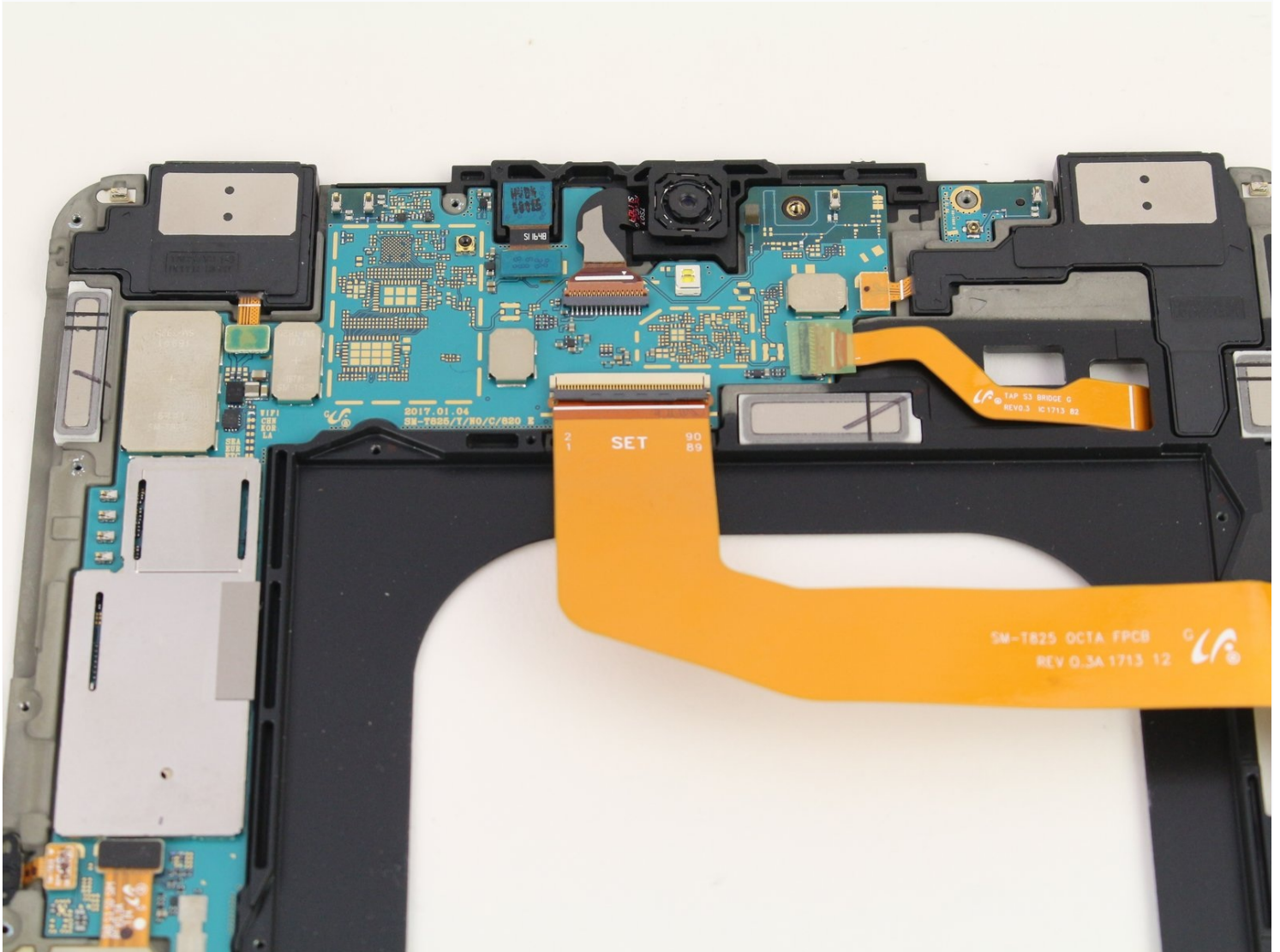




Samsung Galaxy Tab S3 Motherboard Replacement

The Samsung Galaxy Tab S3 motherboard...

Written By: Sarah Westberg



INTRODUCTION

The Samsung Galaxy Tab S3 motherboard replacement has multiple steps but once you have gone through the display and battery removal, the motherboard replacement is a straightforward process. Be warned that there are many connectors to undo. A malfunctioning can cause the device to not turn on, unusual visuals on the display, or if your device crashes regularly.

TOOLS:

[Spudger](#) (1)
[iFixit Opening Tool](#) (1)
[Plastic Cards](#) (1)
[iOpener](#) (1)
[Microwave](#) (1)
[Phillips #00 Screwdriver](#) (1)


PARTS:

[Galaxy Tab S3 9.7 Battery](#) (1)

Step 1 — Display



- To soften the adhesive holding the tablet together, heat up the edges of the glass panel using a heated **iOpener** on the edge of the device. Alternatively you can use a heat gun to loosen the adhesive.
- Leave the **iOpener** on edge for two minutes.

 Be careful not to burn yourself while handling the hot **iOpener**. For more information on the **iOpener**, use the [iOpener Instructions Guide](#).

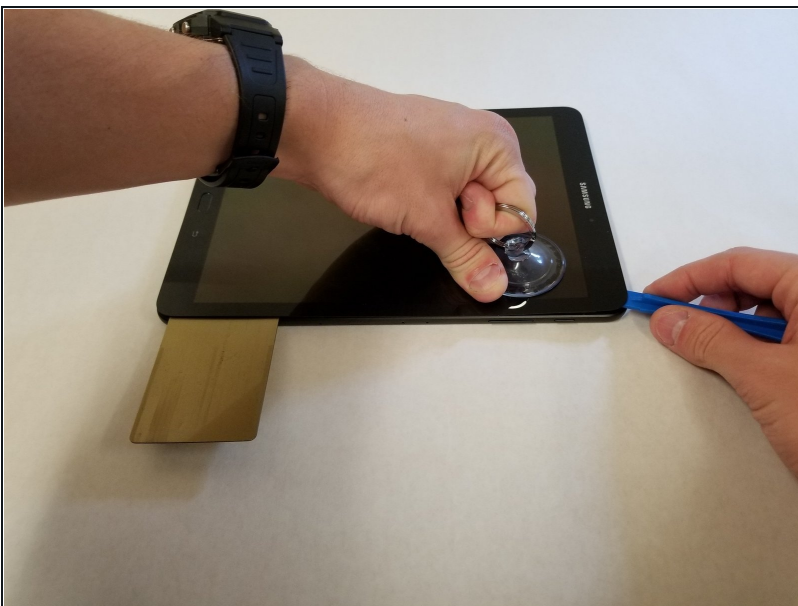
Step 2



- Place a **suction cup** near edge that you heated up with the **iOpener**.
- Press down on the **suction cup** to create a seal, and pull up with force to create a separation between the display and the midframe.
- Use an **opening tool** to split apart the glass panel from the midframe.

⚠ Be careful to not break the glass when prying from the frame.

Step 3



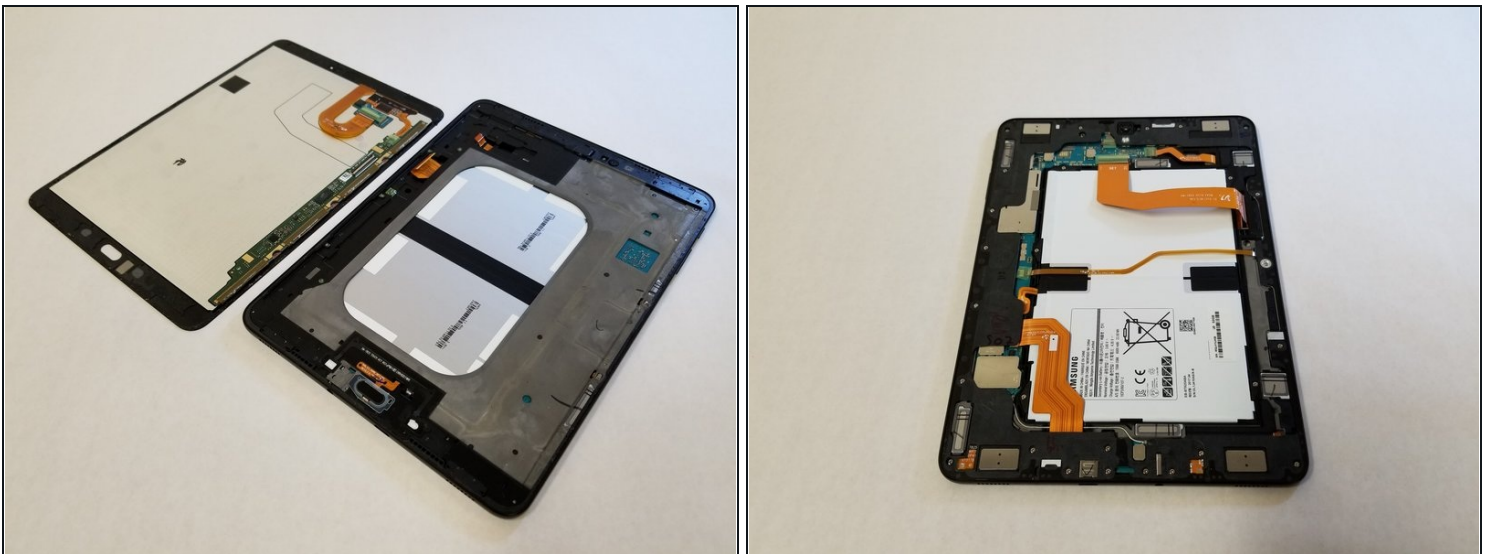
- As you continue along the edge using the **opening tool**, use a **plastic card** to keep the glass separate from the midframe.
- ① You can also use multiple **opening picks** instead of a **plastic card**.

Step 4



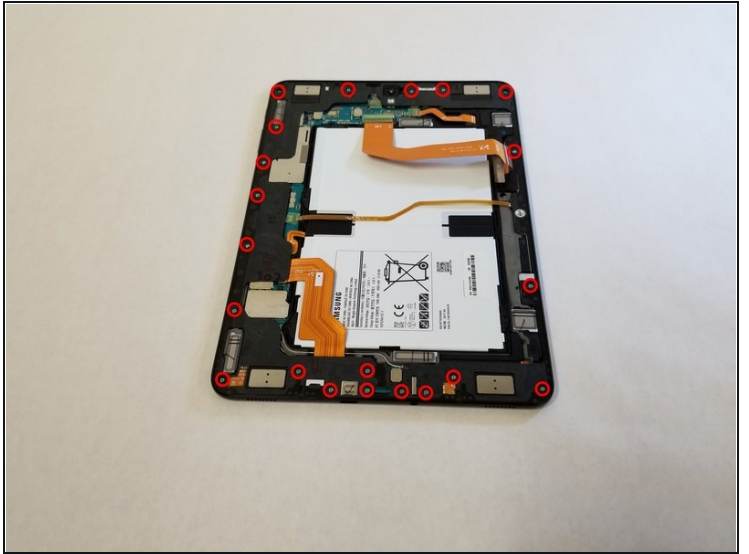
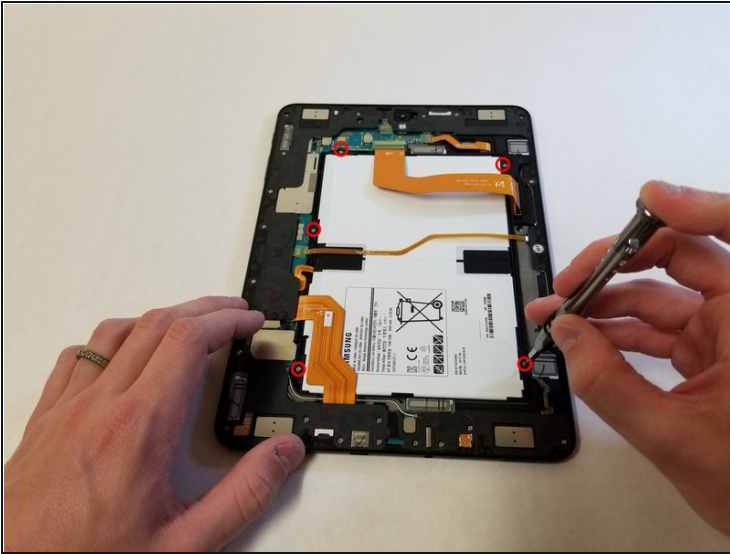
- Pull off the glass panel using the **suction cup**.
 - ① As you remove the glass panel, be careful not to tear the ribbon connecting the motherboard to the display.
- Carefully disconnect the **ribbon cable** connecting the display assembly to the motherboard. You can disconnect this ribbon from either end.

Step 5 — Rear glass panel



- Repeat steps 3 through 7 to remove the rear glass panel on the opposite side of the device.

Step 6 — Battery



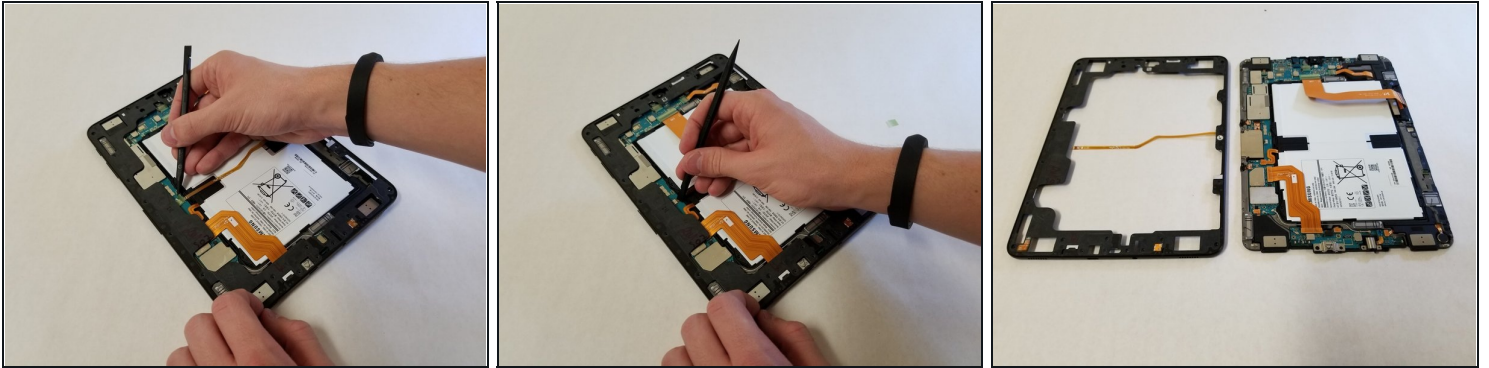
- Use a Phillips #000 screwdriver to unscrew the five screws securing the battery, and the twenty-two screws surrounding the midframe.

Step 7



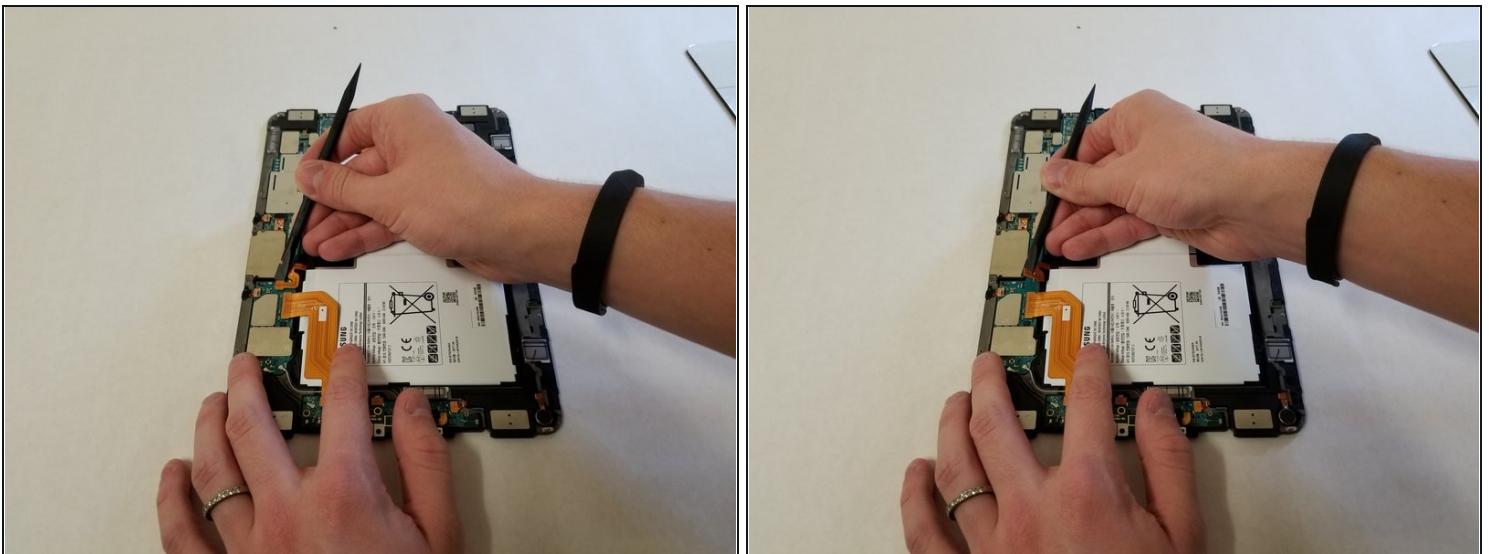
- The midframe should snap off from the device's motherboard.

Step 8



- Locate the ribbon running from the midframe and disconnect it from the motherboard with the flat end of a **spudger**.

Step 9



- Use the flat end of the **spudger** to pop off the connector between the battery and the motherboard.

Step 10



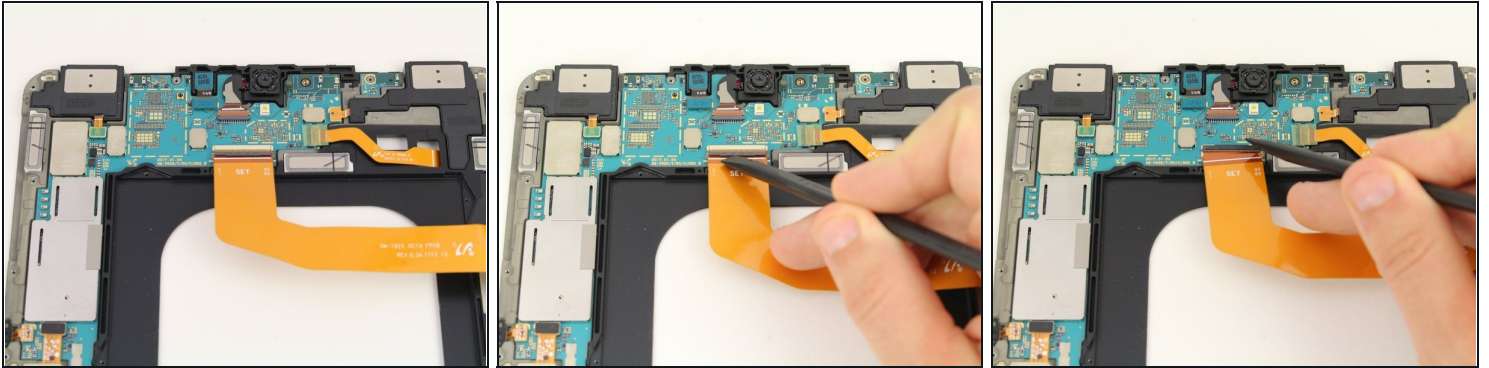
- Flip the midframe over and pop the battery out, making sure to slide it out from underneath the ribbon cables.

Step 11



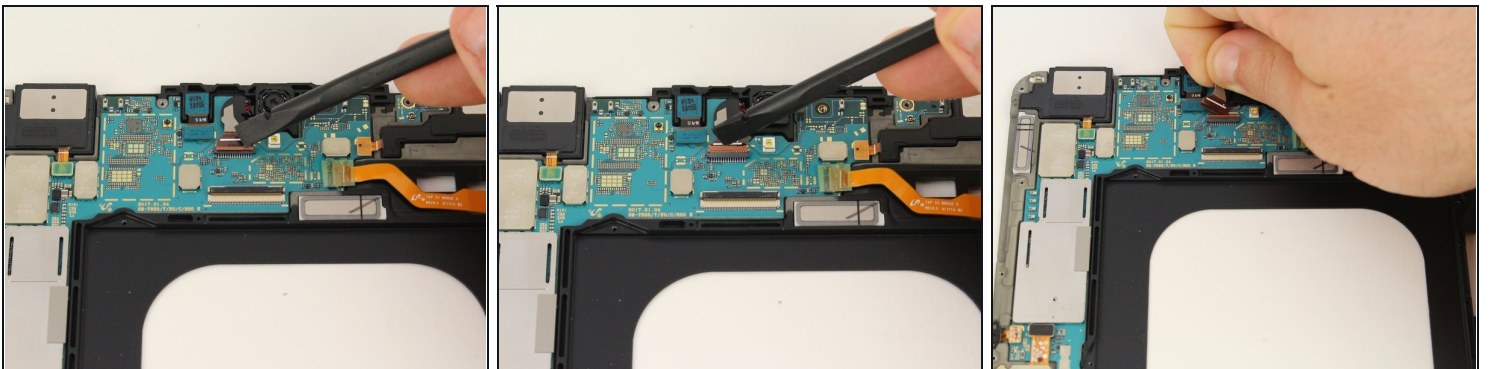
- The battery should now be removed and detached from the device.

Step 12 — Motherboard



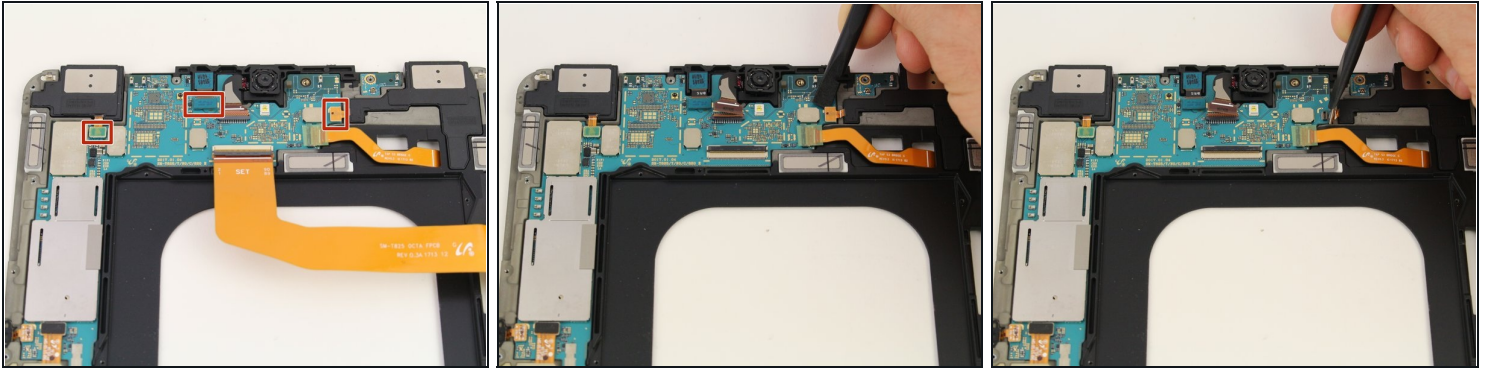
- Use the black nylon spudger to lift the gray ZIF connector up and pull out the orange ribbon cable below the camera.

Step 13



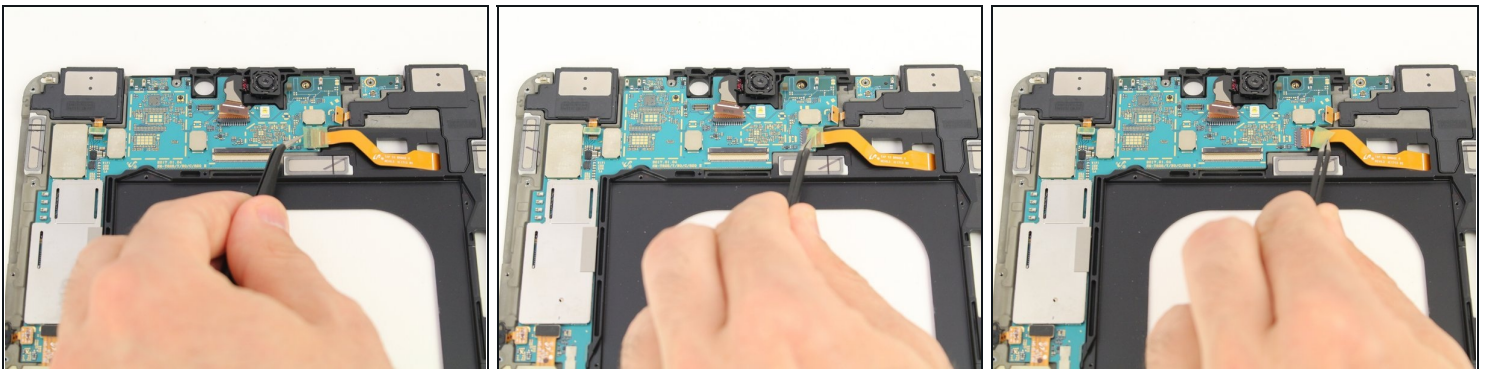
- Remove the ribbon cable for the front facing camera after popping the red ZIF connector bar up with a spudger.

Step 14



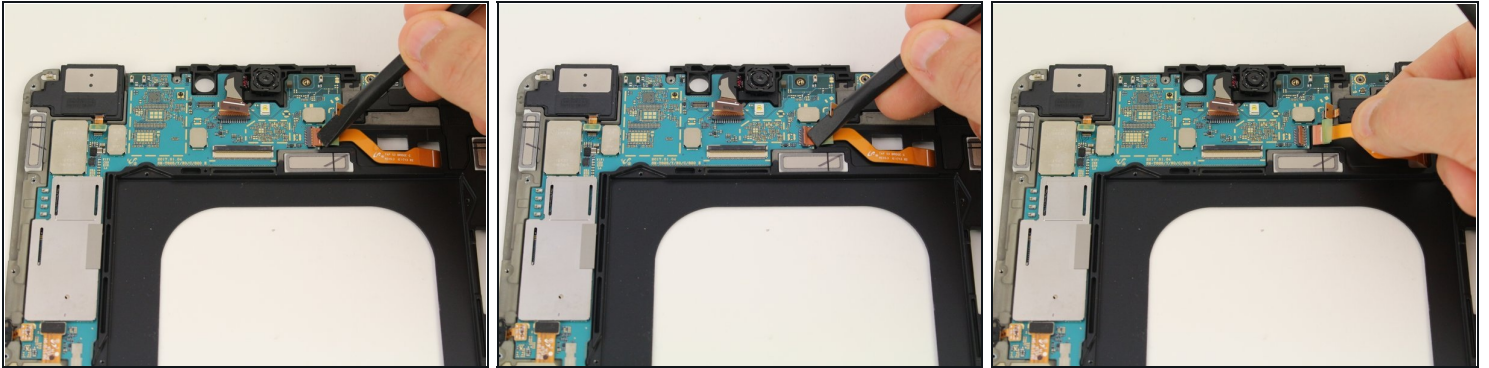
- Disconnect the three press fit connectors in the top section of the midframe by prying upwards with the spudger.

Step 15



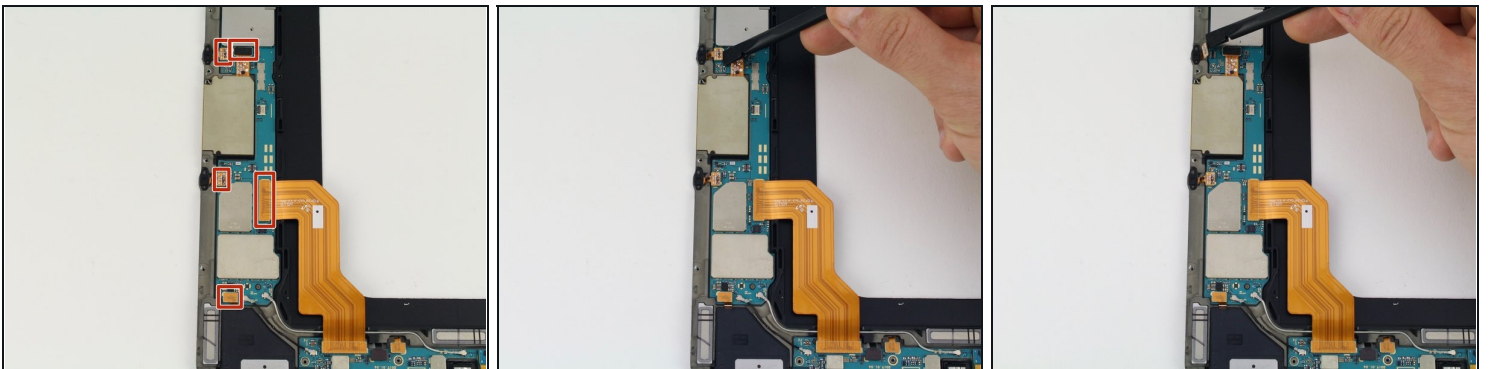
- Pull back the green tape on the upper section of the motherboard with your [tweezers](#) to reveal the ZIF connector below.

Step 16



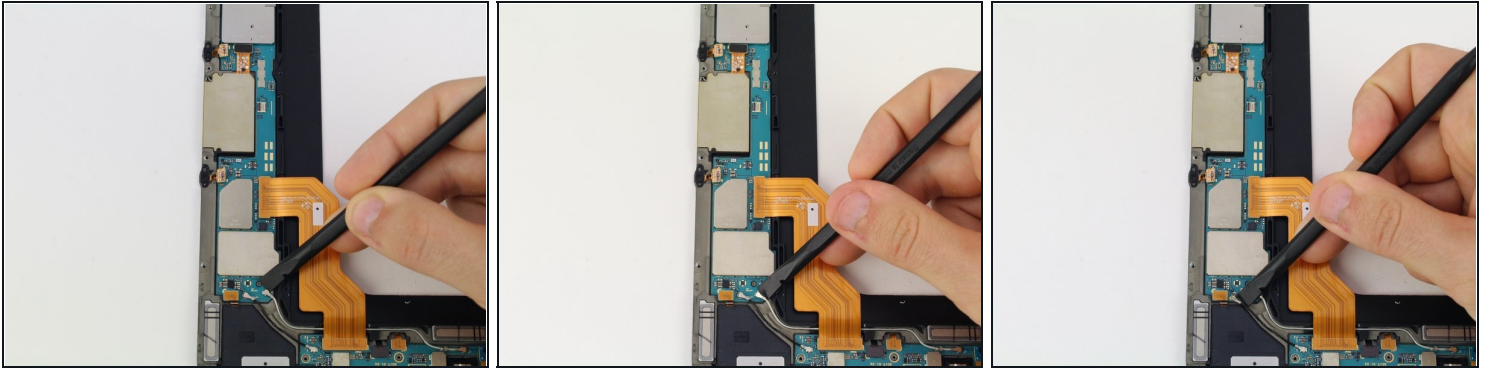
- Push the red bar up from the ZIF connector with the spudger and pull the orange, touchpad ribbon cable out.

Step 17



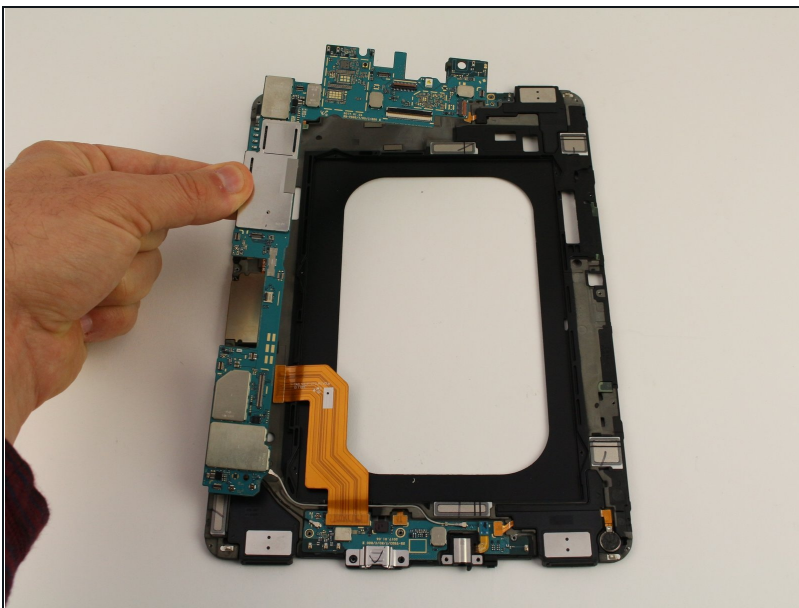
- Use the spudger to disconnect five more press fit connectors on the left side of the motherboard by prying upwards.

Step 18



- Pop the coaxial antenna cables off from the motherboard with the spudger.

Step 19



- Using your fingers, move all the cables aside and wiggle the motherboard free.

To reassemble your device, follow these instructions in reverse order.