



Samsung Series 3 NP300E5A-A02UB Battery Replacement

This guide will show you how to take out the battery from the Samsung Series 3 NP300E5A-A02UB laptop.

Written By: Timothy Johnson



INTRODUCTION

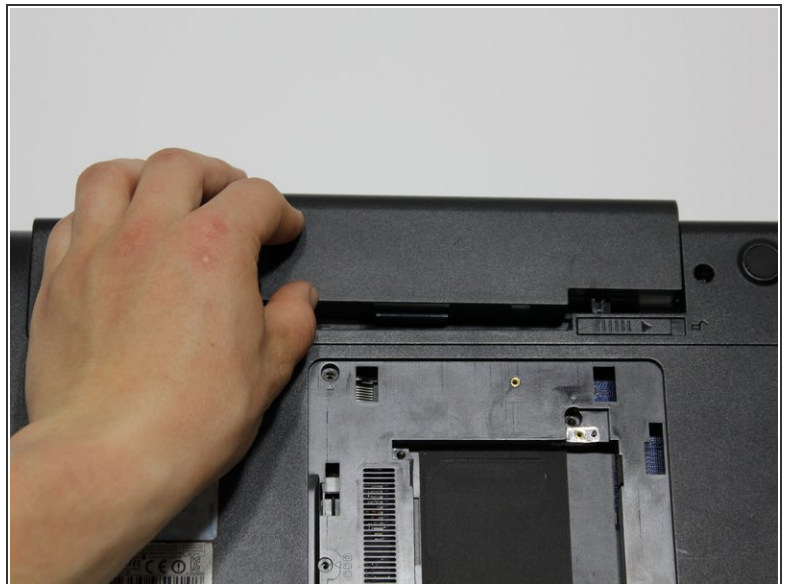
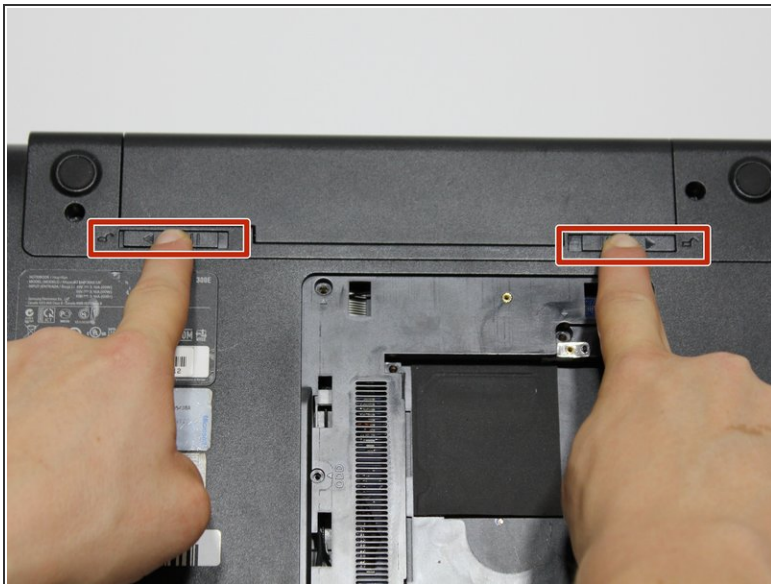
To help get to the inner core of the computer, you will have to take the battery out of the computer. This guide outlines how battery removal is accomplished.

Step 1 — Battery



- Place the computer upside down, with the battery pack facing away from you.

Step 2



- Remove the battery by pushing out the locks on either end then pushing the battery away from you.

To reassemble your device, follow these instructions in reverse order.

This document was generated on 2020-11-28 07:22:50 AM (MST).

