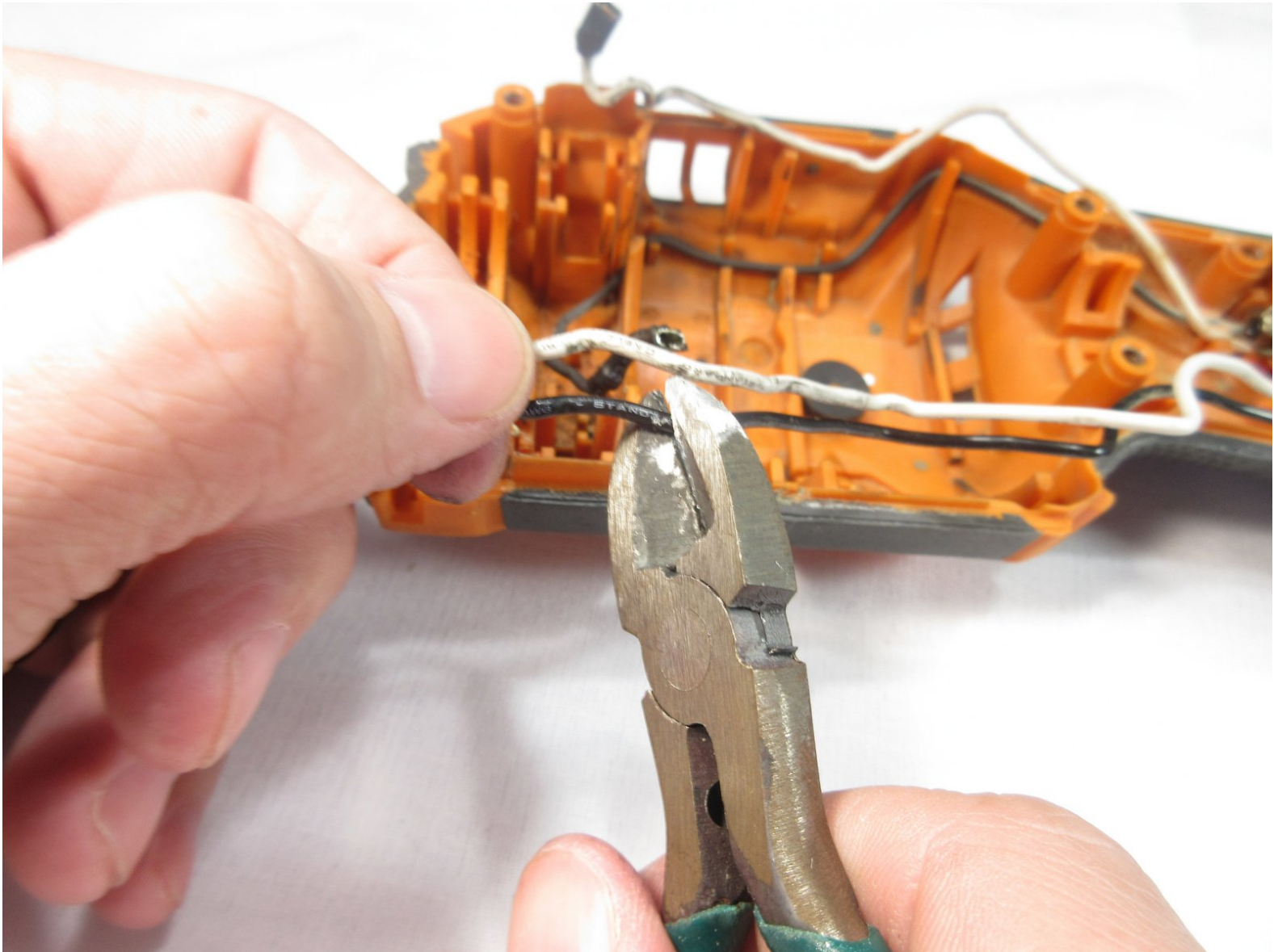




Ridgid JobMax R2851 Series B Cord Replacement

This guide is to assist in replacing the cord for the Ridgid JobMax R2851 Series B.

Written By: Brent Shepherd



INTRODUCTION

This guide is for cord replacement on the Ridgid JobMax R2851 Series B. This would be helpful if you have been noticing sudden starting and stopping of the tool or a jittery operation. If the tool has stopped working completely and you find the motor and the brushes are in good condition.

This repair requires minimal tools listed in the guide, and can be done in a short amount of time. Additionally you should remember to unplug your device before starting any repairs to avoid risk of being electrocuted.



TOOLS:

- [iFixit Tech Knife](#) (1)
- [Spudger](#) (1)
- [T10 Torx Screwdriver](#) (1)
- [Wire Stripping/Crimping Tool](#) (1)
- [Soldering Workstation](#) (1)



PARTS:

- [Motor Brushes](#) (1)

Step 1 — Motor



 Unplug the device from the wall.

- Orient the device so that the trigger is facing downwards.
- Place your thumb and index finger on the two buttons located on the head of the tool.
- Press the two buttons in and pull the head of the tool off.

Step 2



- Loosen all eight 15mm T10 Torx screws.
- ⓘ You do not need to fully remove the screws yet; just loosen them enough that the device shell starts to open.

Step 3



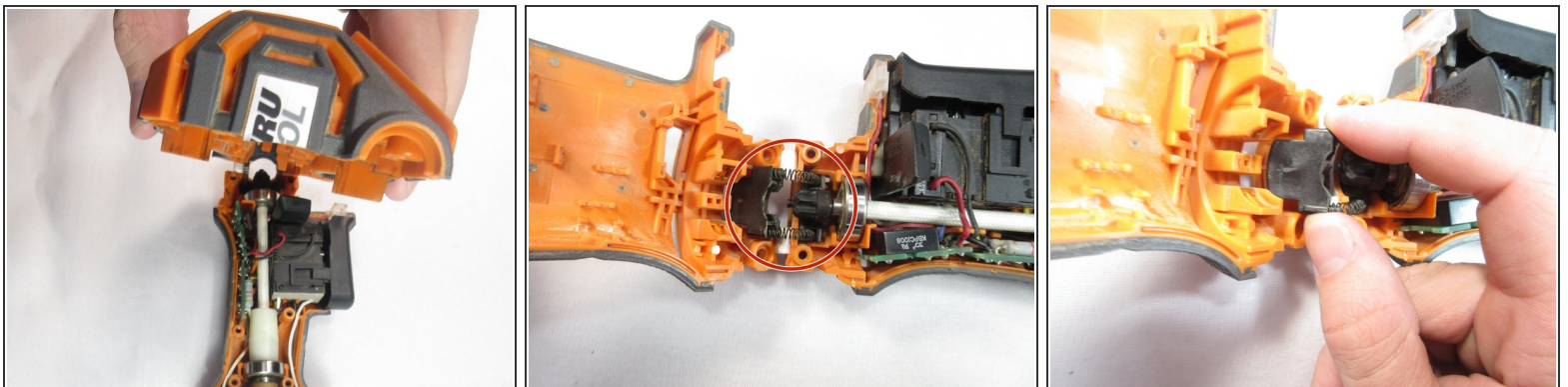
- Orient the device so that the cord end is facing upwards.
- Take a small cutting tool, and cut down the seam in the back, ensuring that you only cut the sticker.
- ⚠ Make a shallow cut to avoid damaging internal hardware.

Step 4



- Completely remove all eight 15mm T10 Torx screws.

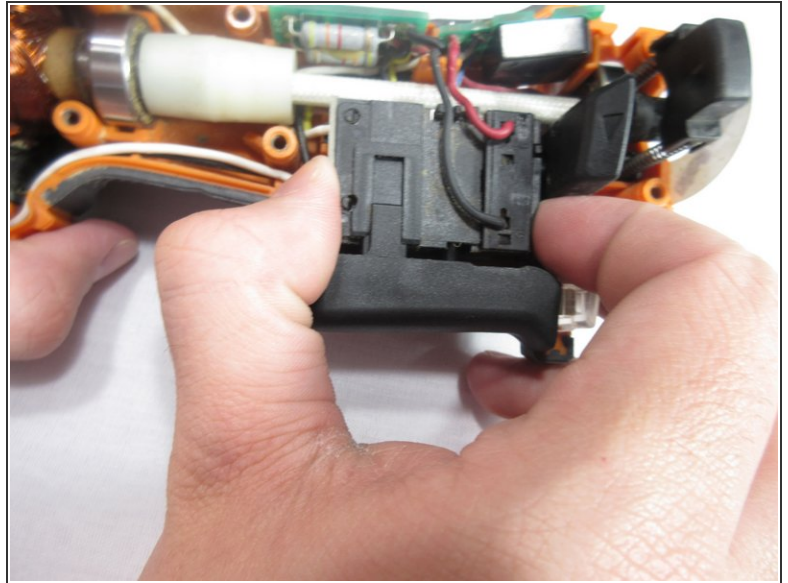
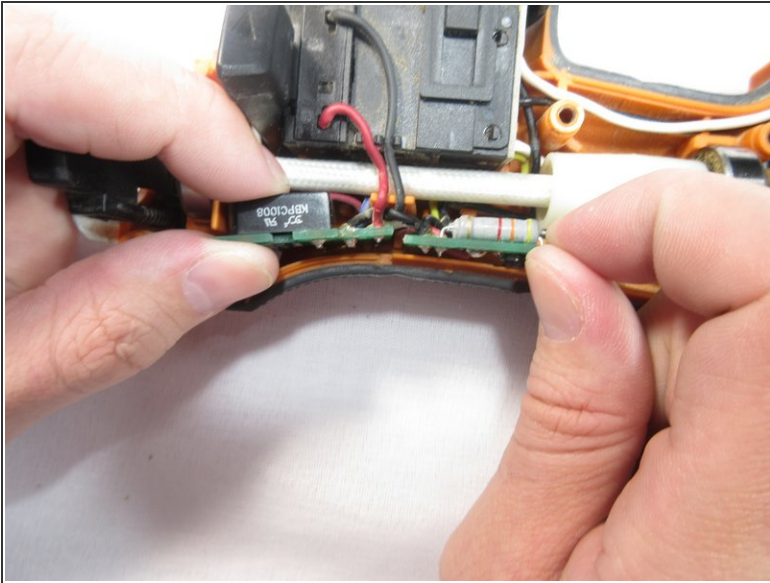
Step 5



- Pull the device case off, gripping at the back of the case and rotating it towards the front of the device.
- Once the device has been separated gently pull on the trigger assembly to remove it from one side of the case.

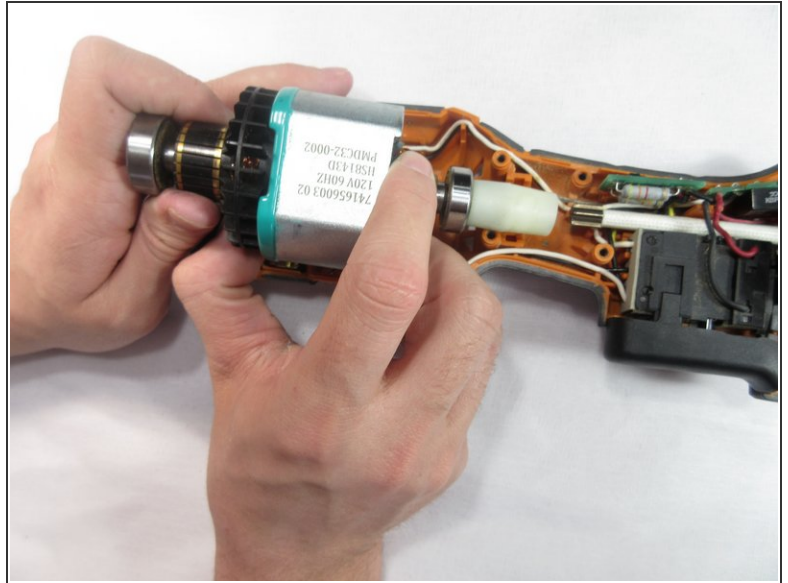
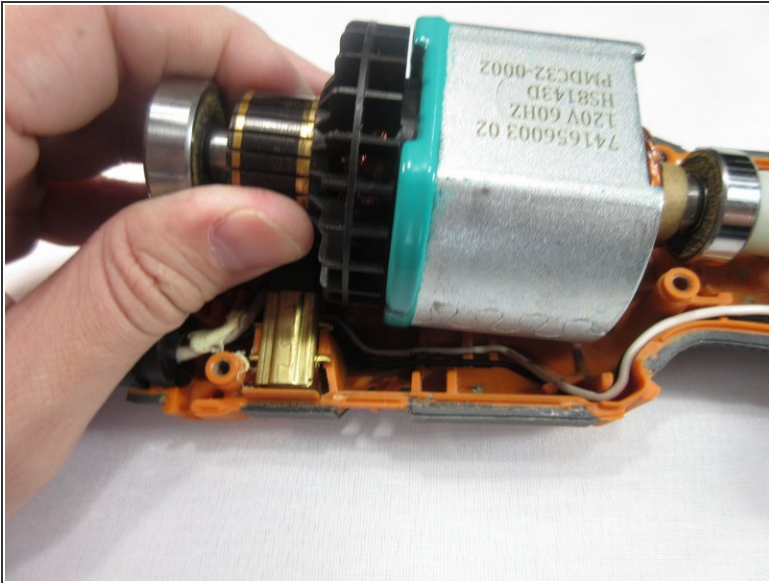
⚠ Watch out for the locking mechanism for the head of the device when removing.

Step 6



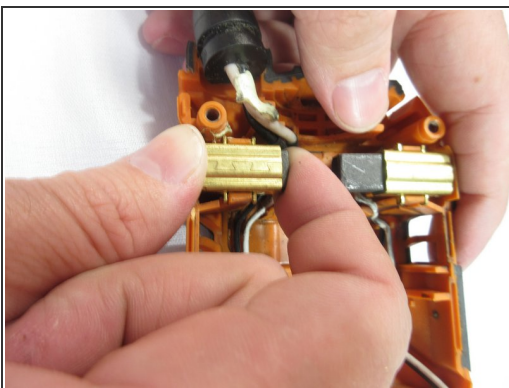
- Grip each of the sides of the two green circuit boards and slide them up.
- Grip each side of the device trigger, and slide it up.
- ⓘ You do not need to completely remove these parts. Sliding them upward provides the needed room.

Step 7



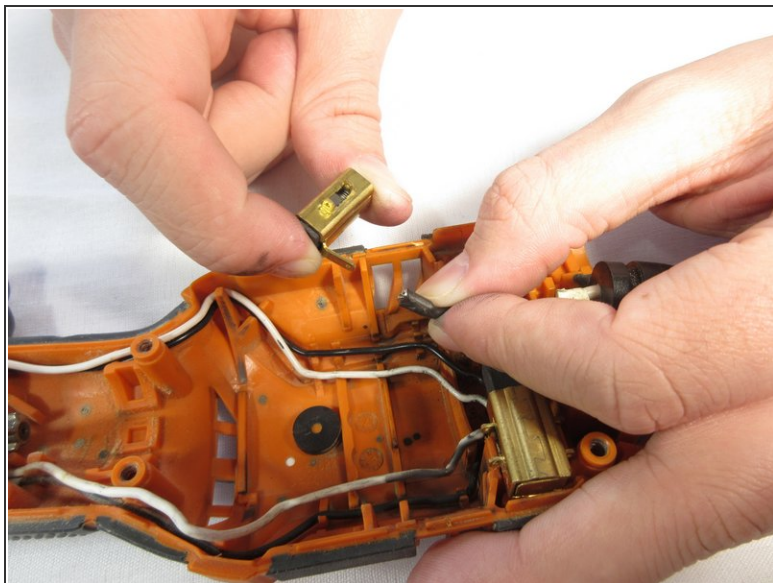
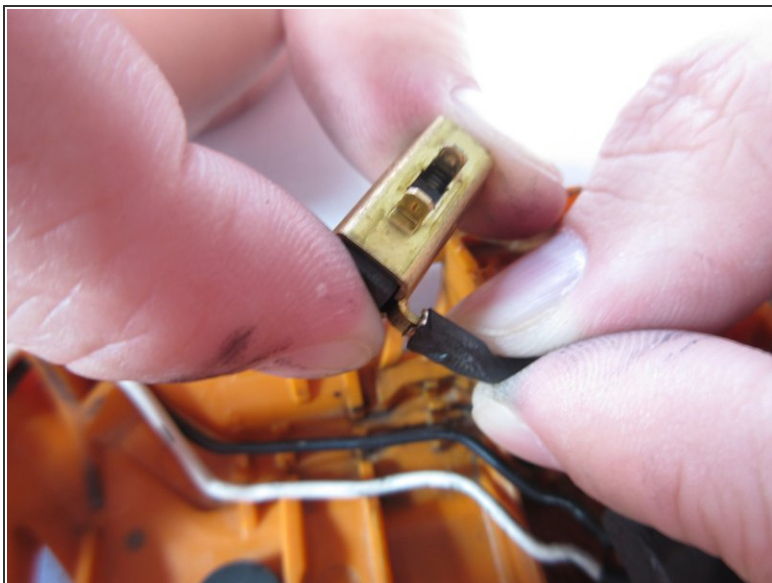
- Grip the motor firmly and pull towards the back of the tool, rotating back forth until the motor is free.
- ☑ When reinstalling the motor, use a spudger to pull back the brushes. This allows the motor to slide into place.

Step 8 — Motor Brushes



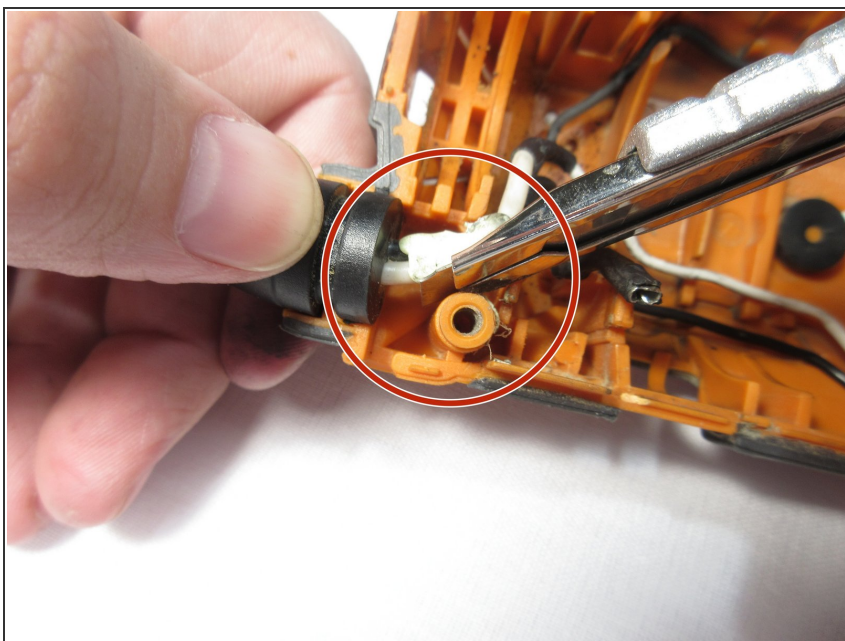
- Pinch the brush and pry upward away from the center of the part to remove from the device.
- ⓘ Take care to not damage the connections on the bottom of the brush.

Step 9



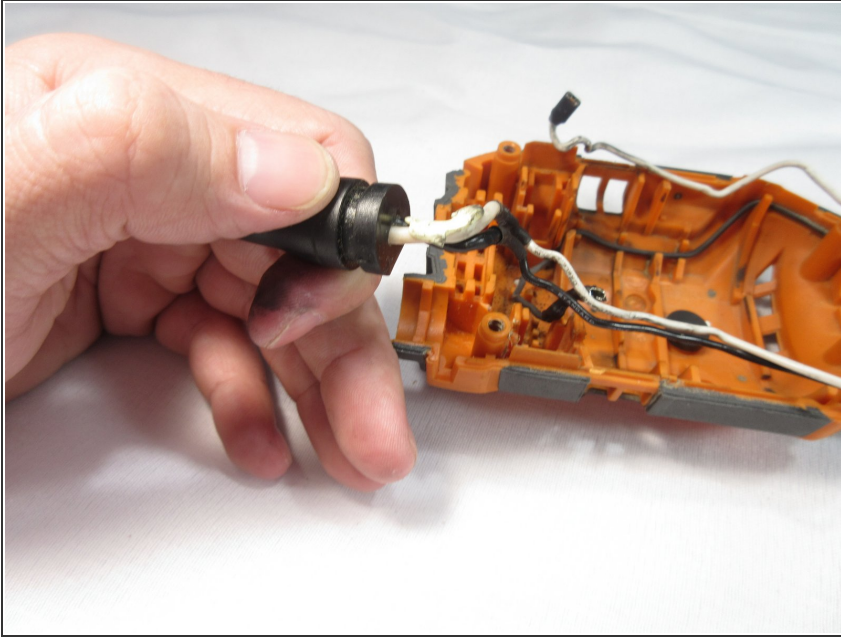
- Firmly hold the brush in one hand and pull at the base of the wire to disconnect.

Step 10 — Cord



- Cut glue holding down the cord.
- ⓘ Take care to not damage the casing or cord when cutting the glue.

Step 11



- Lift the cord up and out of the device.

Step 12



- Cut through each of the two wires connecting the cord to the device.
- ⓘ Keep in mind that you should cut the wires far enough down to re-wire the device.
- Strip the wires and [solder](#) the replacement cord.
- Wrap the soldered area in electrical tape before putting the device back together.

To reassemble your device, follow these instructions in reverse order.