



Compaq Presario v2000 mother board Replacement

Removing and installing the mother board

Written By: Andrew





TOOLS:

- [Phillips #1 Screwdriver](#) (1)
 - [Flathead 3/32" or 2.5 mm Screwdriver](#) (1)
 - [Spudger](#) (1)
-

Step 1 — mother board



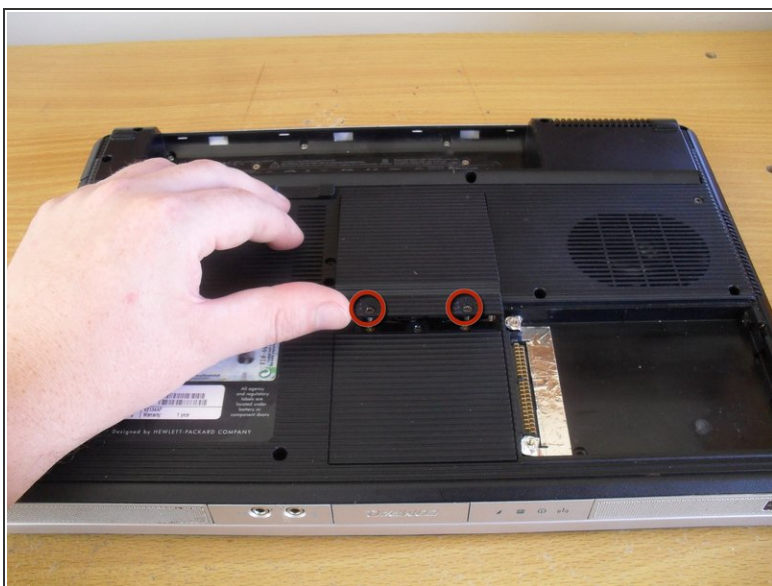
- Start by removing the battery

Step 2



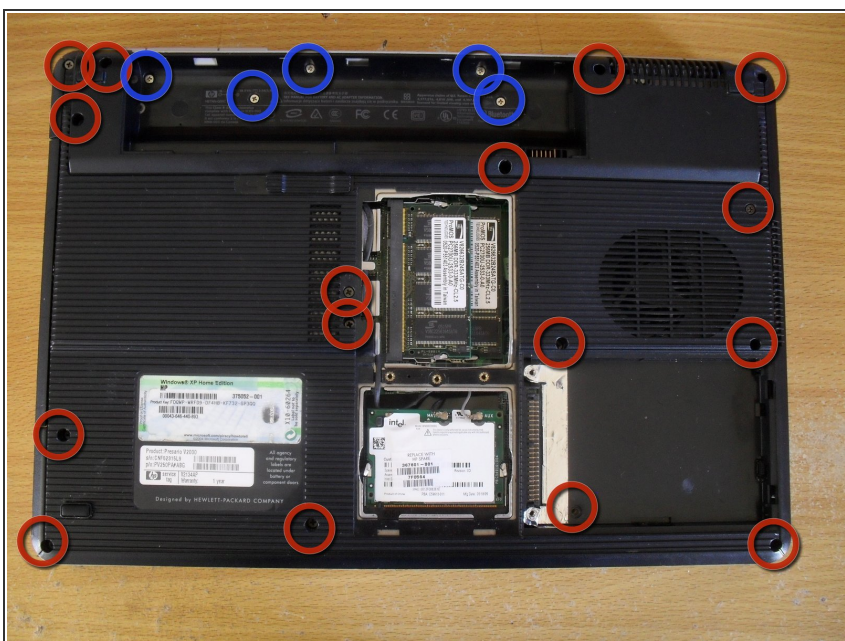
- Loosen the two screws of the hard drive cover
- ⓘ The screws will remain in the cover
- Remove the cover, then pull straight up on the pull tab to remove the hard drive

Step 3



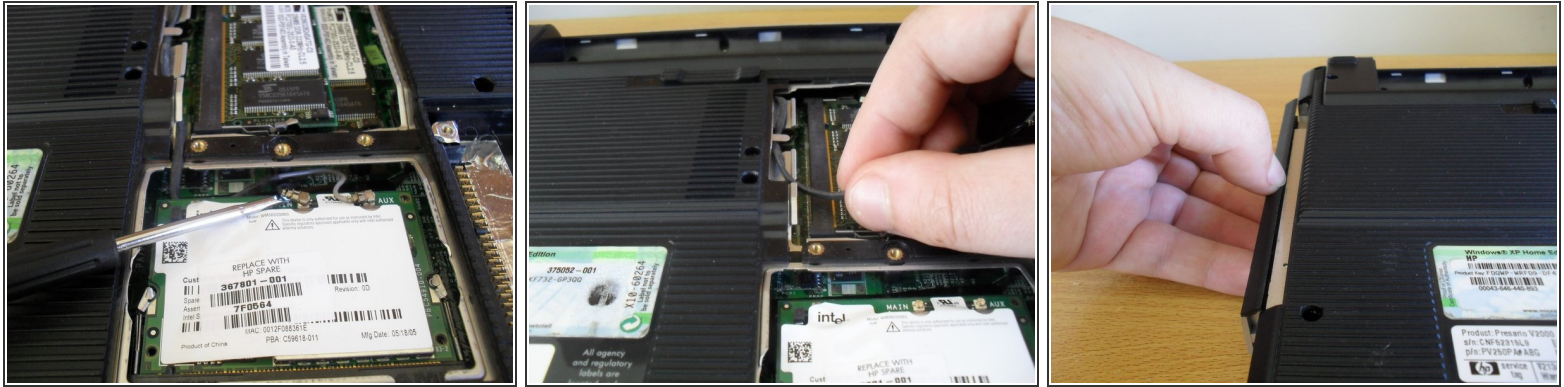
- Loosen the two screws on the ram cover and remove
- Loosen the one screw on the wireless card cover and remove
- ⓘ These screws will remain in their covers

Step 4



- Remove 16 bottom cover screws (dark coloured 6mm screws)
- Remove 5 screws from inside the battery bay (silver coloured 4mm screws)

Step 5



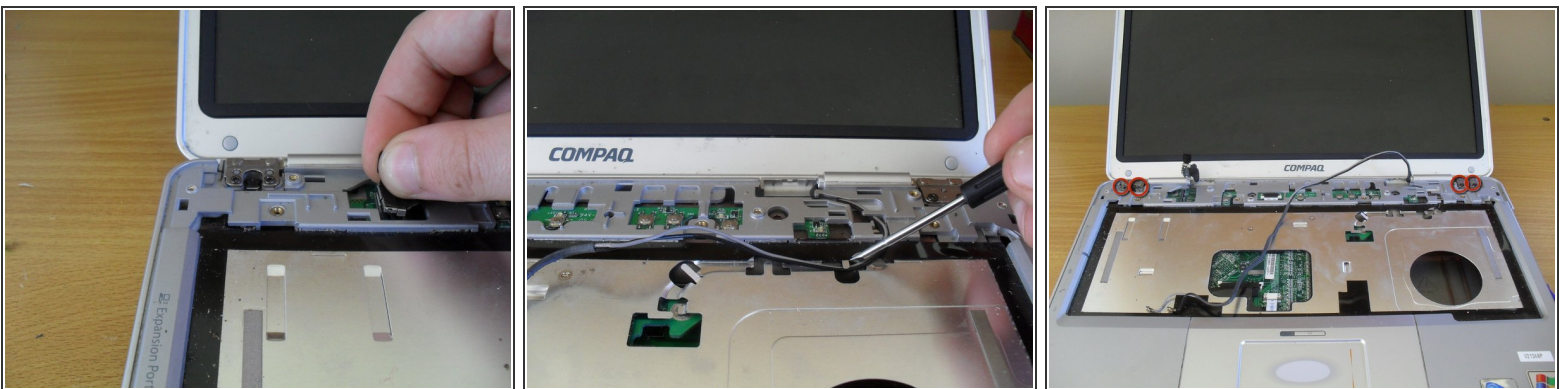
- Using a small flat blade screwdriver pop off the wireless aerial connectors from the wireless card
- ⚠ The wireless connectors are easily damaged. Lift the connectors straight up. When reassembling line them up carefully and push them straight down
- Unroute the cables from the bottom of the case
 - Slide out the dvd drive

Step 6



- Flip the laptop over and open the display to start removing the keyboard
- Slide a small flat blade screwdriver between the insert and delete keys and lever the button board cover off
- Remove the four keyboard screws (dark coloured 4mm screws)
- Lift up the keyboard, but beware of the cable underneath still to be removed
- Loosen the socket for the keyboard cable and remove the keyboard

Step 7



- Remove the display cable connector by lifting it straight up
- Un-route the wireless aerial cables from the top cover
- Remove the four display screws (dark coloured 5mm screws). Lift the display up and off

Step 8



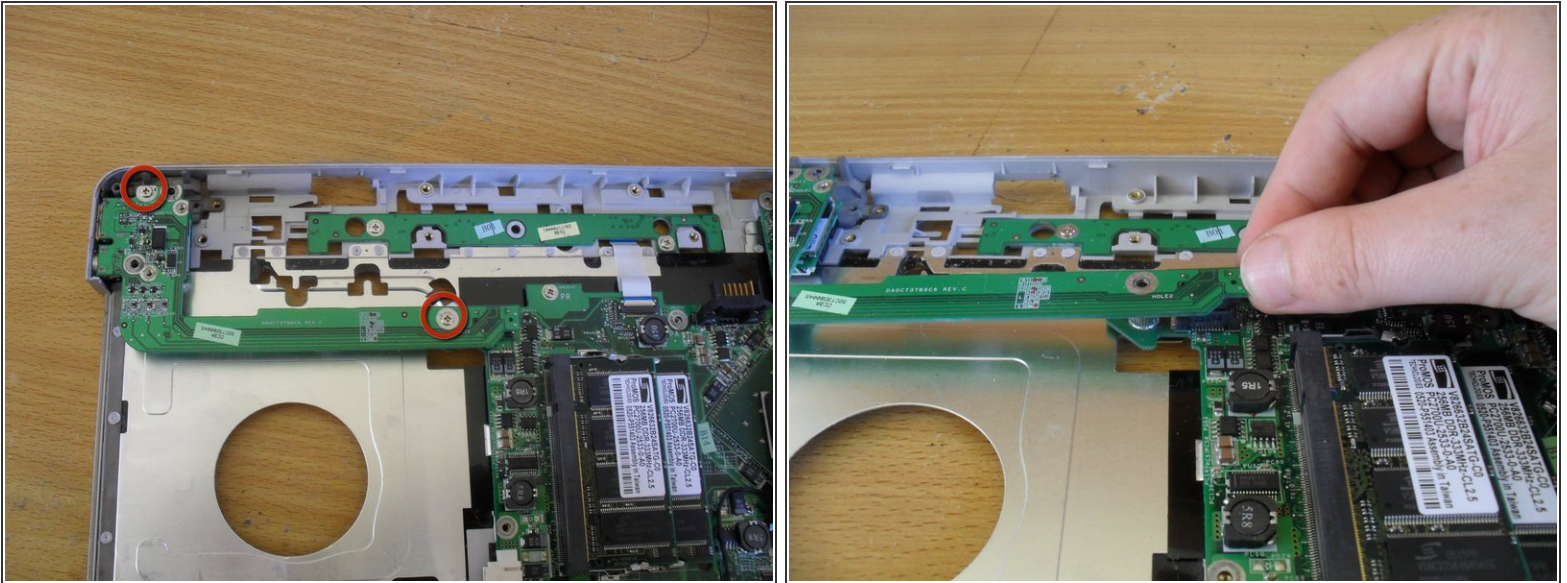
- Use a flat blade screwdriver to loosen the touchpad cable connector

Step 9



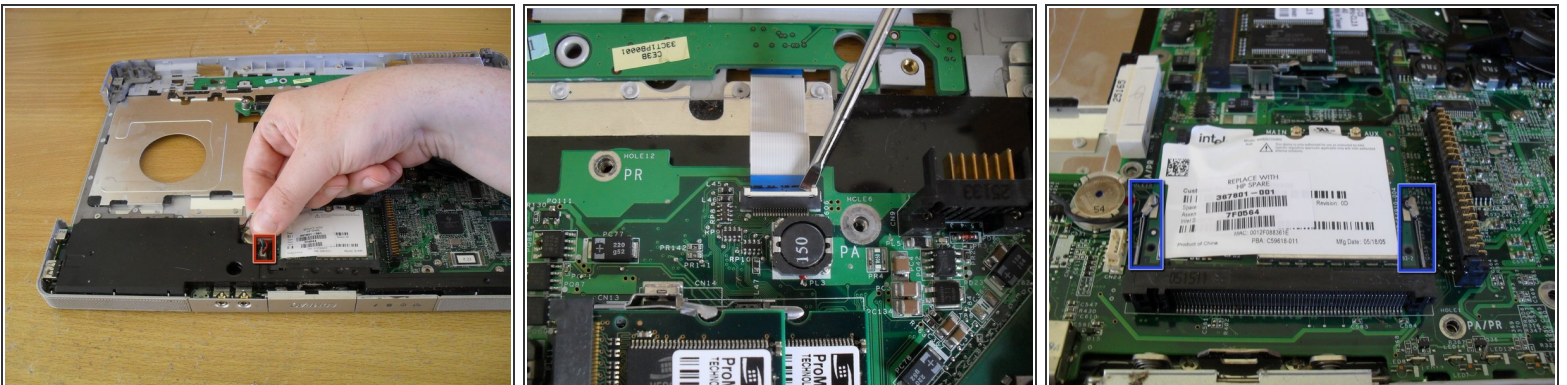
- Flip the laptop over and grip the bottom case where the dvd drive used to be
- Lift off the bottom case

Step 10



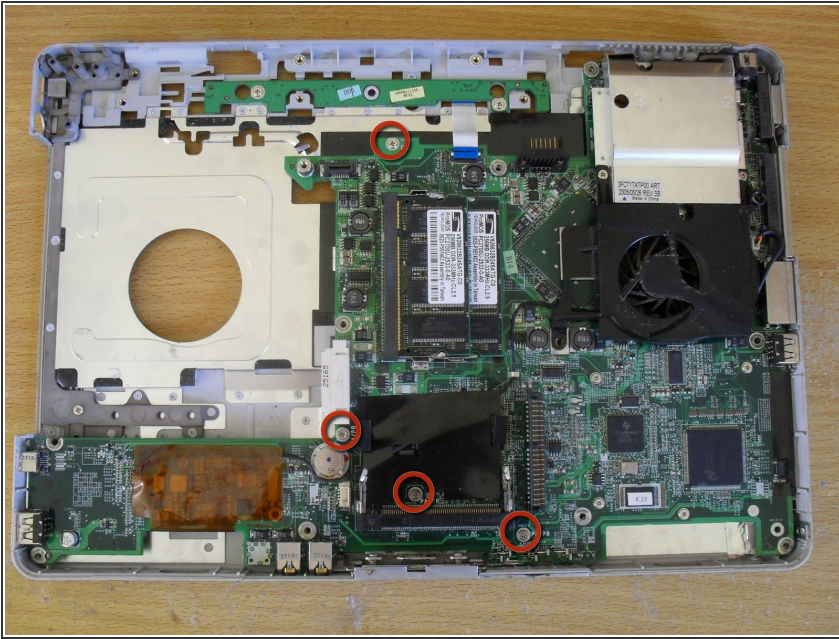
- Remove two screws from the s-video/usb board (silver coloured 4mm screws)
- Lift the board from the right hand side
- ☑ The connector for this board is under the right hand side. When reassembling, make sure this connector plugs in firmly

Step 11



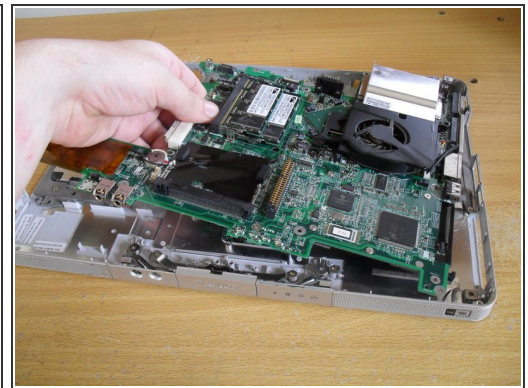
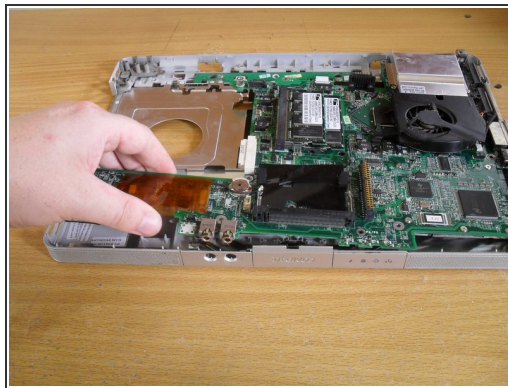
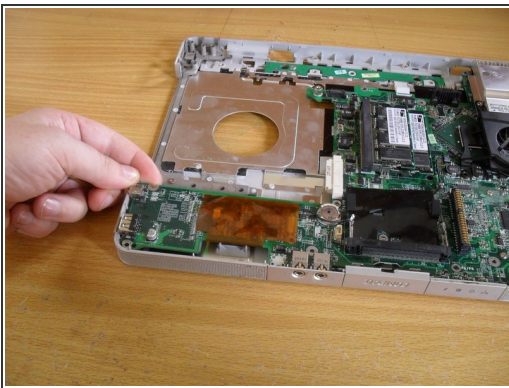
- Remove the speaker cable and lift out the speaker module
- Use a flat blade screw driver to loosen the button board connector
- Push the two wireless card arms outwards to remove the wireless card

Step 12



- Remove the four screws holding the mother board in place (silver coloured 4mm screws)
- ★ The screw holes are marked "PA/PR" or "PR". When reassembling do not put a screw in the hole marked "PA"

Step 13



- Remove the left side of the motherboard first. It may be necessary to bent the case a little to get the firewire and USB port away from the case
- Pull on the middle of the board next, angling up to clear the front audio jacks from the case
- Pull the board away from the right side of the case

Step 14



- Remove the three screws holding the heatsink to the mother board (silver coloured 4mm screws)
- Remove the heatsink fan connector
- Lift the heatsink off the board
- Use a flat blade screwdriver to turn the CPU lock and remove the CPU

To reassemble your device, follow these instructions in reverse order. See special reassembly notes in steps 10 and 12.