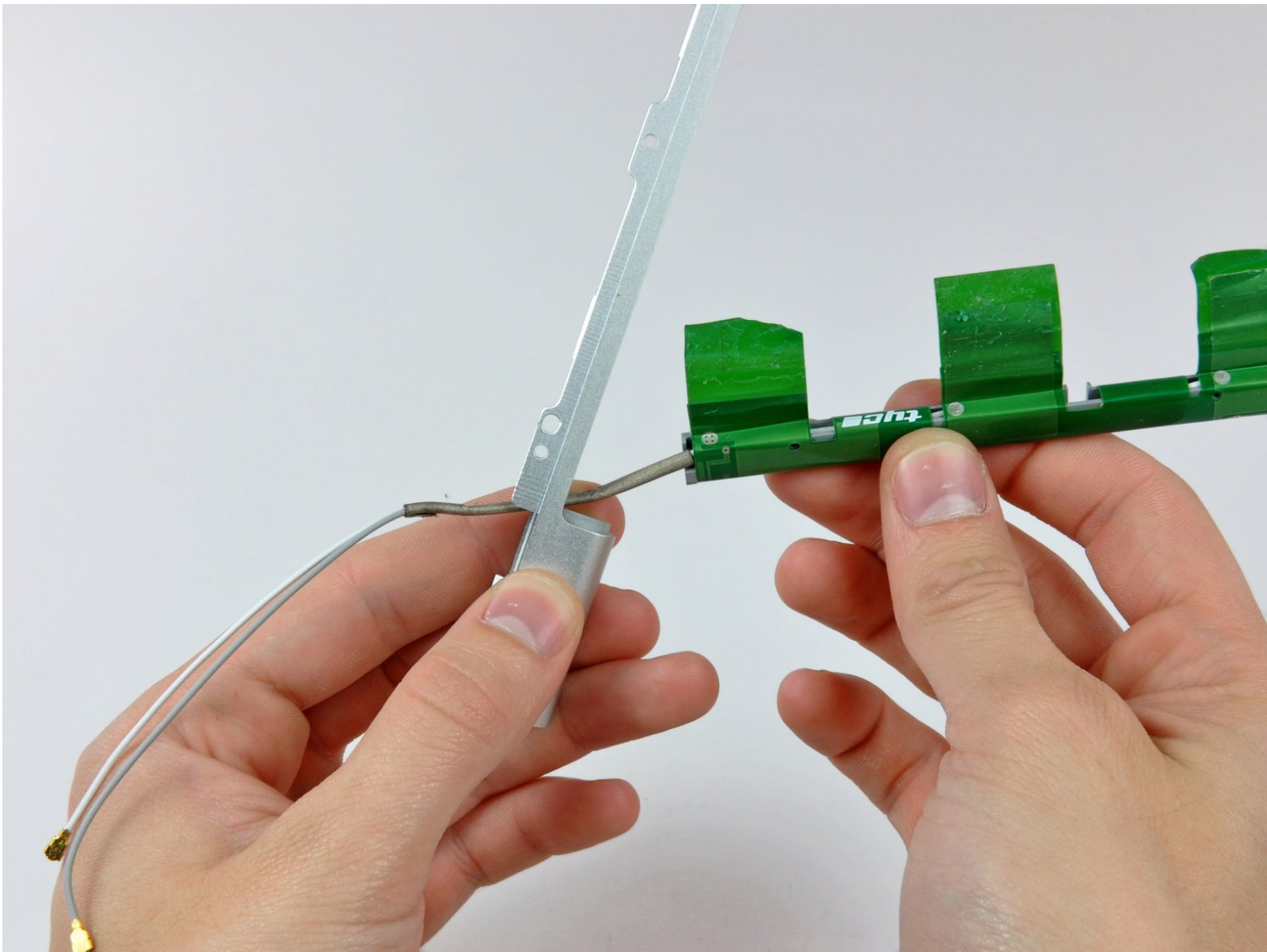




MacBook Pro 15" Core Duo Model A1150

Antenna Cables Replacement

Written By: Andrew Bookholt



INTRODUCTION

Use this guide to replace faulty antenna cables rather than replacing your whole display.



TOOLS:

- [Phillips #00 Screwdriver](#) (1)
- [Spudger](#) (1)
- [T6 Torx Screwdriver](#) (1)



PARTS:

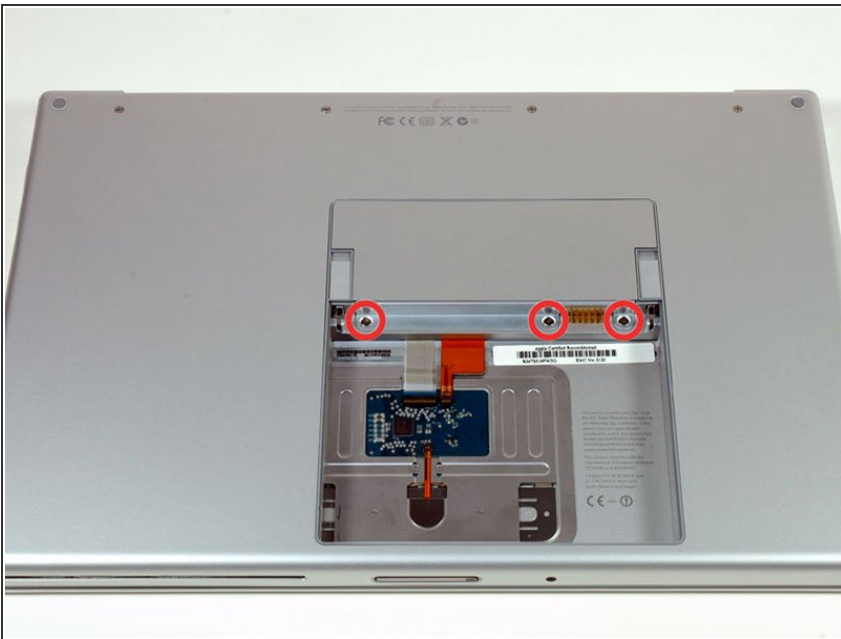
- [MacBook Pro 15" \(Model A1150\) Airport Antenna Cables](#) (1)

Step 1 — Battery



- Use your fingers to push both battery release tabs away from the battery, and lift the battery out of the computer.

Step 2 — Memory Door



- Remove the three identical Phillips screws from the memory door.
- ★ Make sure to record which sets of screws came from where. This will help when re-assembling.

Step 3



- Lift the memory door up enough to get a grip on it, and slide it toward you, pulling it away from the casing.

Step 4 — Upper Case



- Remove the two Phillips screws in the battery compartment near the latch.

Step 5



- Remove the following 6 screws:
 - Two 10 mm T6 Torx screws on either side of the RAM slot.
 - Four 14.5 mm Phillips screws along the hinge.

Step 6



- Remove the four Phillips screws on the port side of the computer.

Step 7



- Rotate the computer 90 degrees and remove the two Phillips screws from the rear of the computer.

Step 8



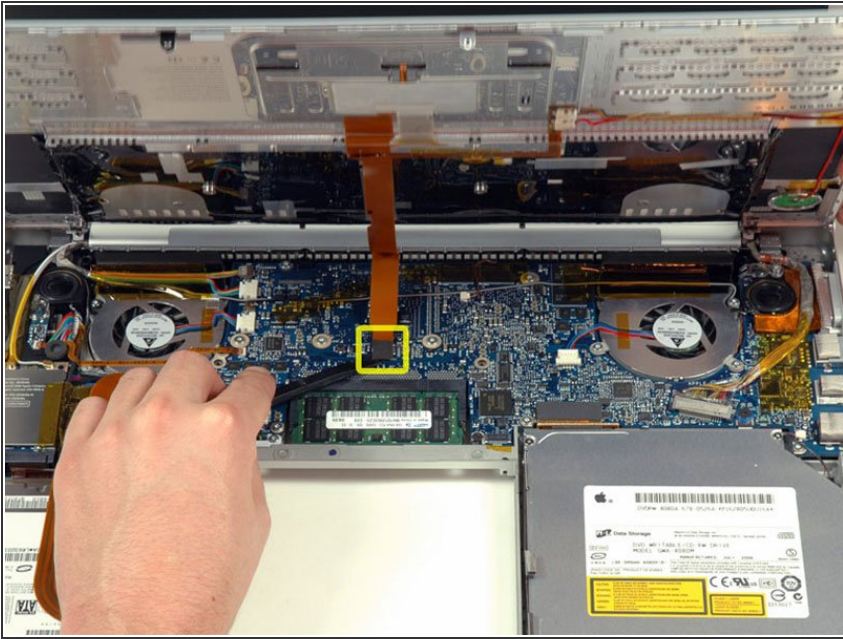
- Rotate the computer 90 degrees again and remove the four Phillips screws from the side of the computer.

Step 9



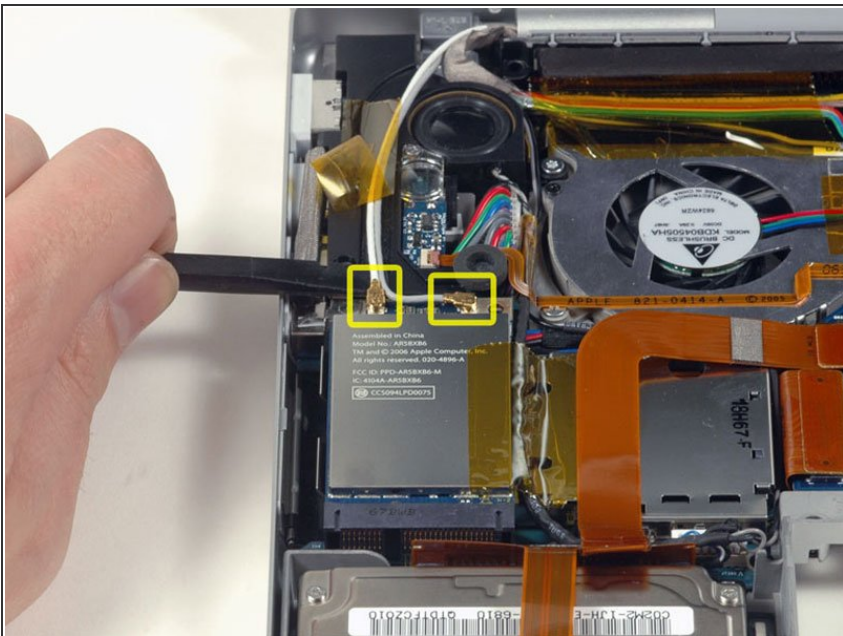
- ❗ Do not yank the upper case off quickly. The case is attached to the logic board via a ribbon cable.
- Lift up at the rear of the case and work your fingers along the sides, freeing the case as you go. Once you have freed the sides, you may need to rock the case up and down to free the front of the upper case. This stage can be quite tricky. Over the DVD reader are 4 tabs set back which pull out vertically.
- Note that the two small tongues on the left hand front of the upper case may bend while you remove the upper case. When re-installing, you may need to bend them back to fit in the grooves in the lower case.

Step 10



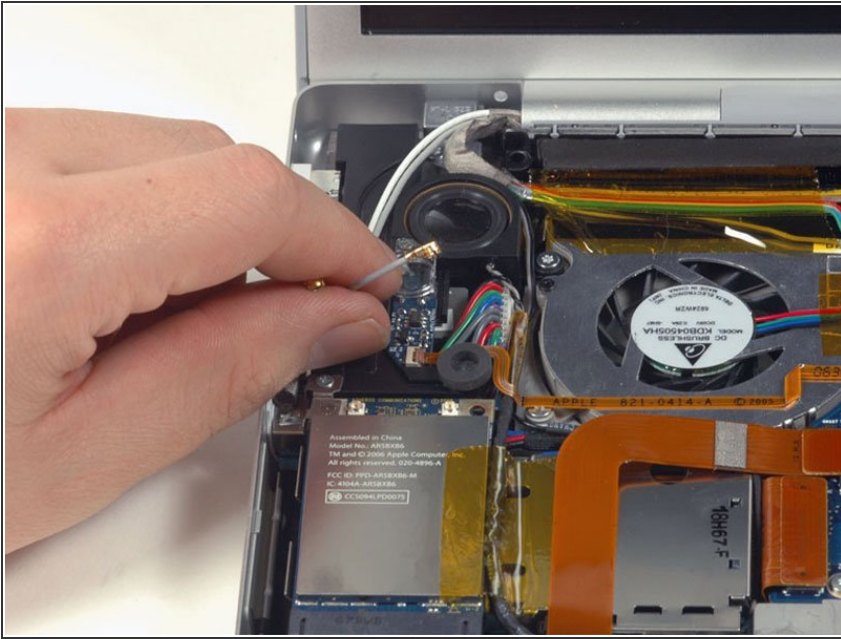
- Disconnect the trackpad and keyboard ribbon cable from the logic board, removing tape as necessary.
- Remove the upper case.

Step 11 — Display Assembly



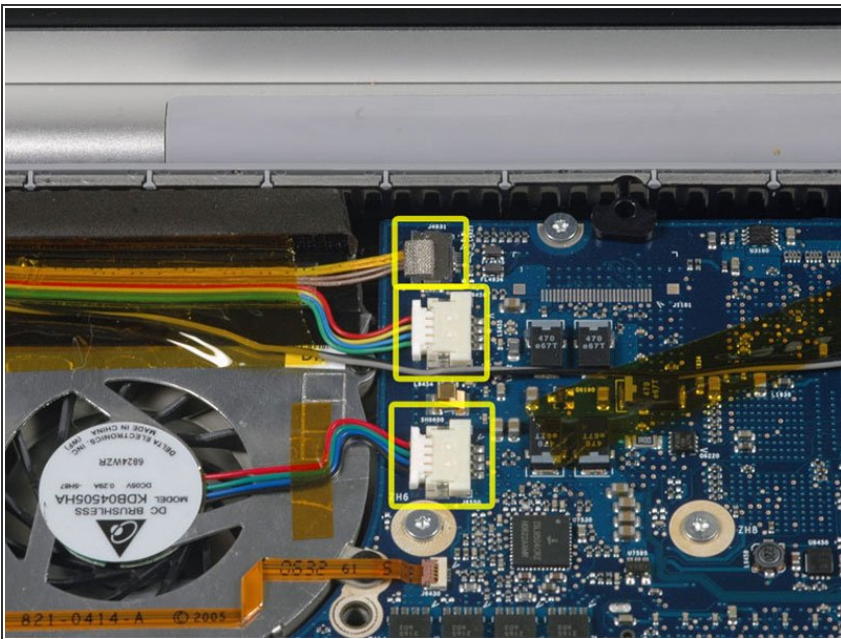
- Disconnect the two antenna cables attached to the Airport Extreme card.
- ✦ The white antenna cable connects to the left side of the Airport Extreme card.

Step 12



- Deroute the Airport antenna cables from their channel in the left speaker.

Step 13



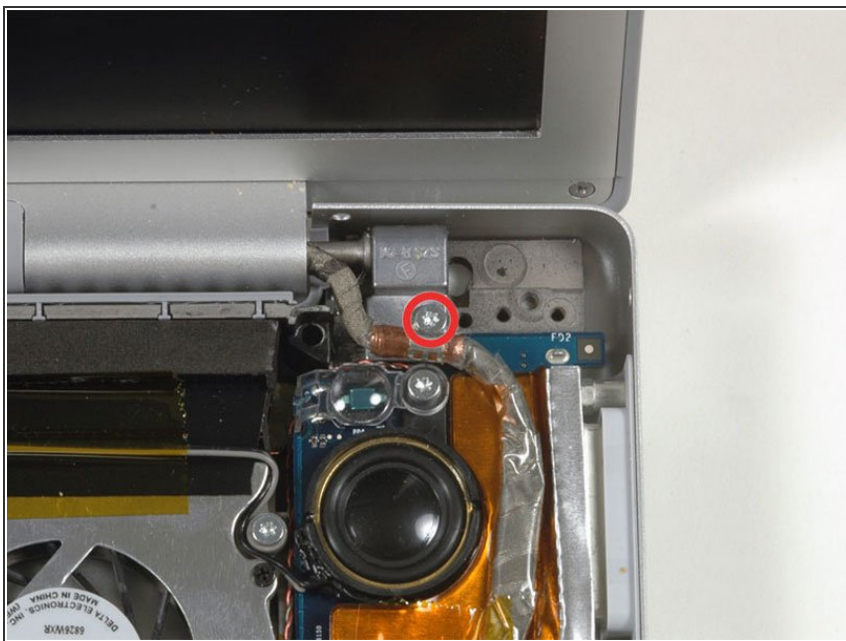
- Disconnect the iSight, inverter, and left fan cables from the logic board by gently pulling in the direction of each cable.

Step 14



- Disconnect the display data cable from the logic board.

Step 15



- Remove the silver T6 Torx screw securing the ground loop on the display data cable to the casing.

Step 16



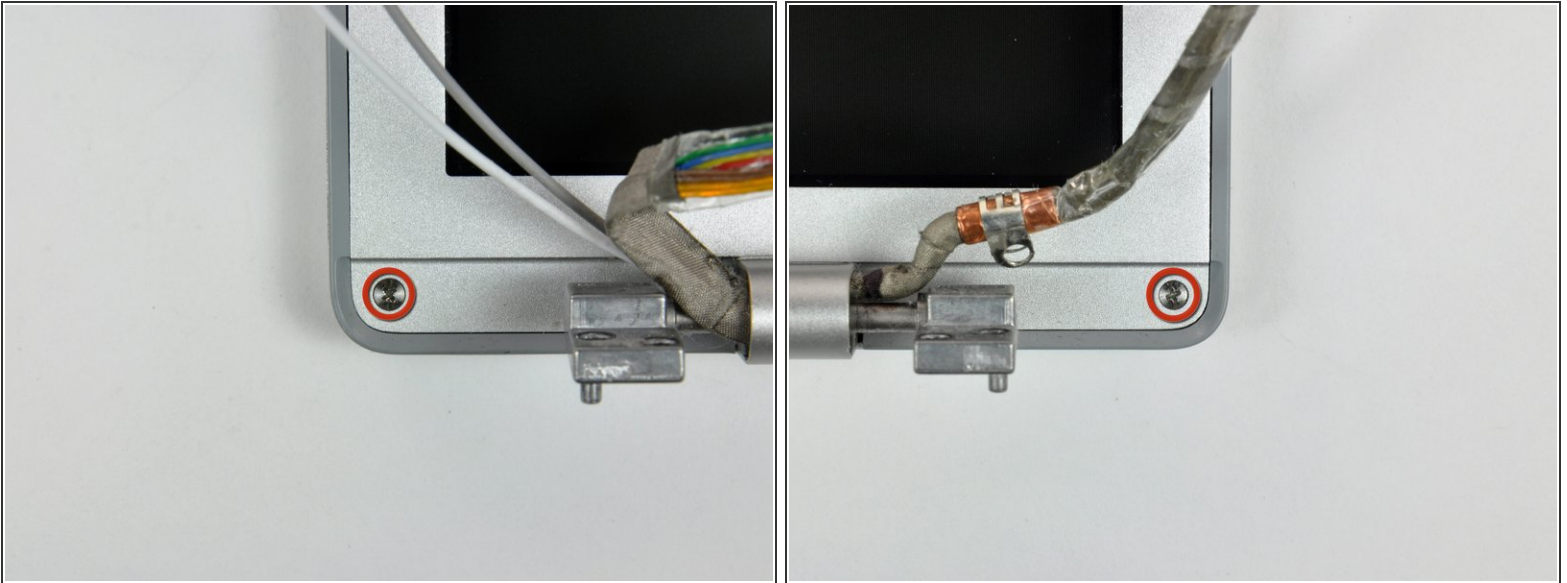
- Support the display with one hand while removing the following 3 screws:
 - Two 9.5 mm silver T6 Torx screws with threads on only part of the shaft on the inside of the display hinges.
 - One 9.5 mm silver T6 Torx screw with threads on the entire shaft on the outside of the left hinge.

Step 17



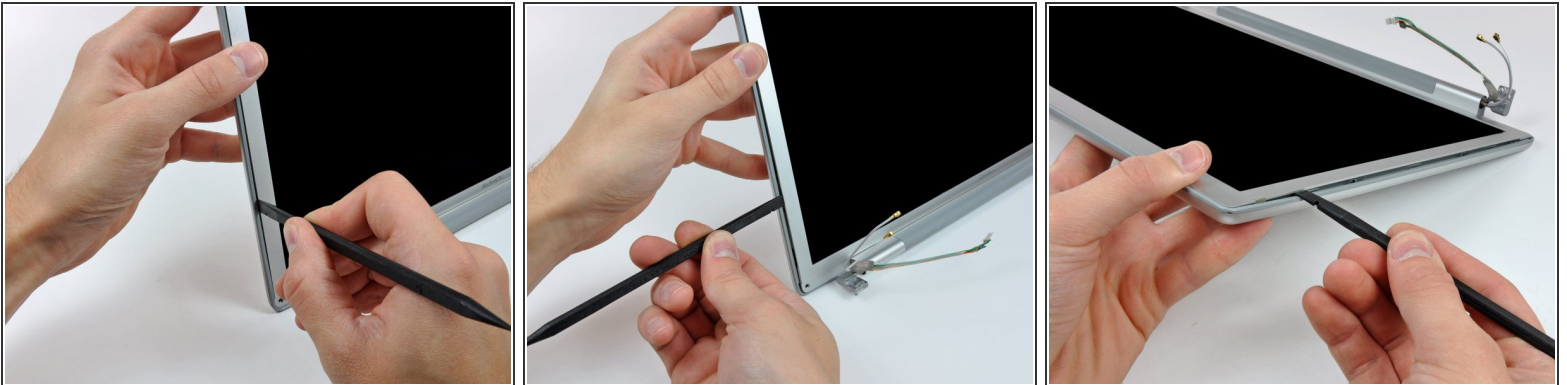
- Grasp the display assembly on both sides and lift it up and out of the computer.

Step 18 — Rear Display Bezel



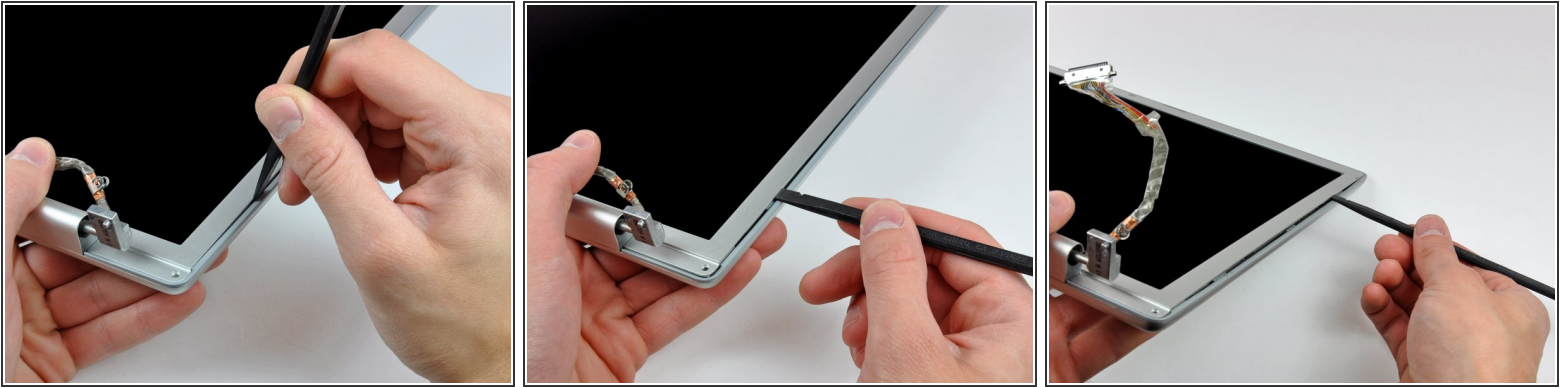
- Remove the two 5 mm Phillips screws from the lower left and right corners of the display (two screws total).

Step 19



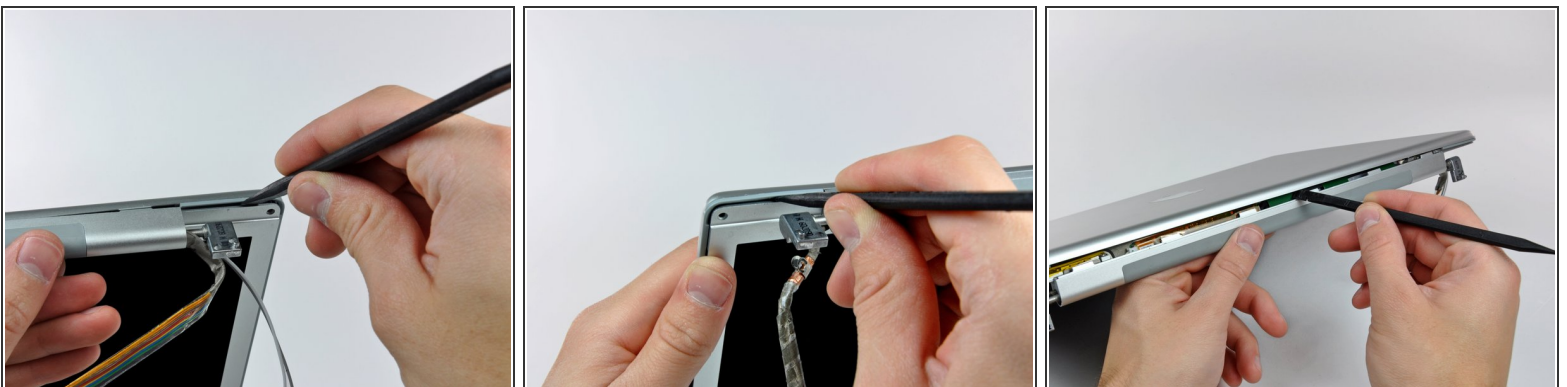
- Insert the flat end of a spudger perpendicular to the face of the display between the plastic strip attached to the rear bezel and the front bezel.
- ⚠ Do not insert your spudger between the plastic strip and the rear bezel.
- With the spudger still inserted, rotate it away from the display to separate the front and rear bezels.
- Work along the left edge of the display until the rear bezel is evenly separated from the front bezel.

Step 20



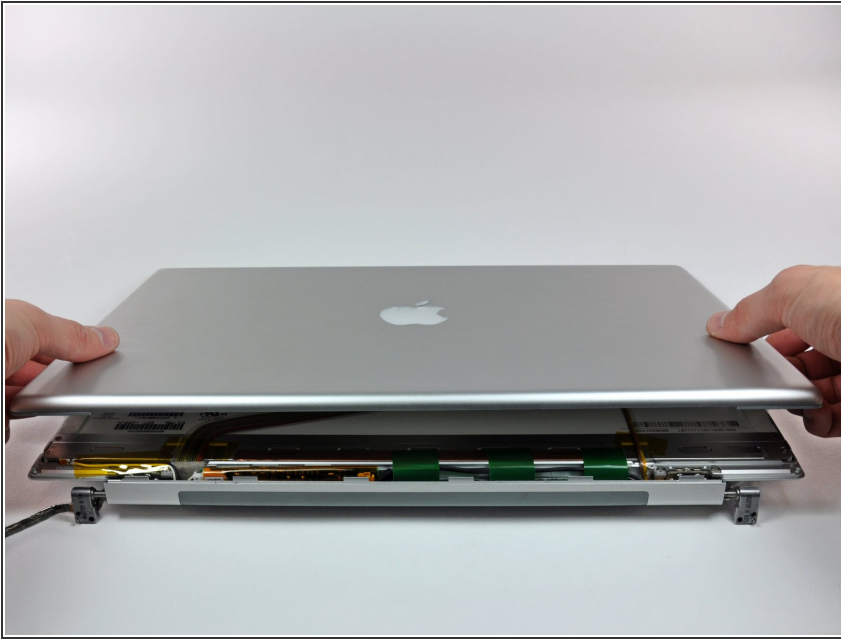
- Insert the flat end of a spudger perpendicular to the face of the display between the plastic strip attached to the rear bezel and the front bezel.
- With the spudger still inserted, rotate it away from the display to separate the front and rear bezels.
- Work along the right edge of the display until the rear bezel is evenly separated from the front bezel.

Step 21



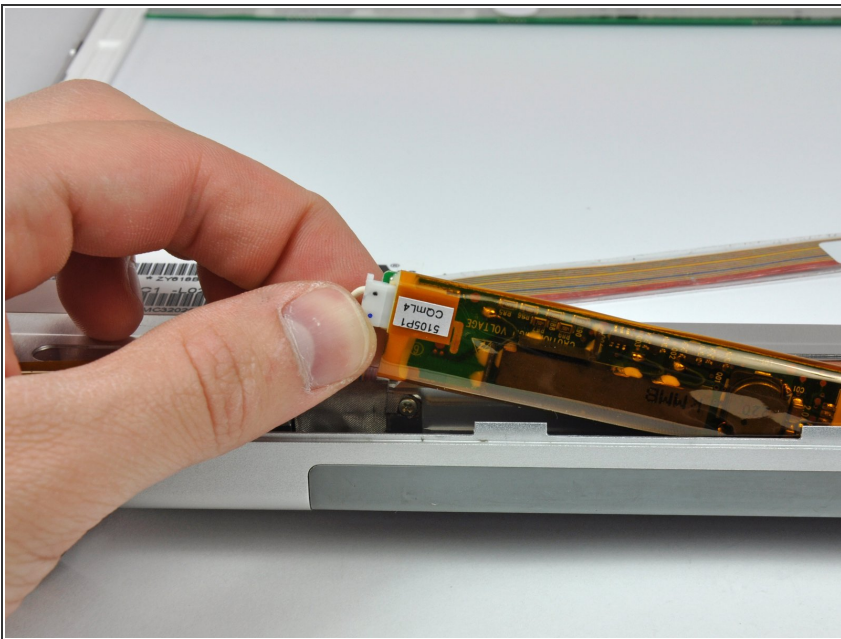
- Insert the flat end of a spudger between the front bezel and the plastic strip attached to the rear bezel near the screw holes at the bottom corners of the display.
- Rotate your spudger toward the rear bezel to separate it from the front bezel.
- If necessary, enlarge the gap between the lower edge of the rear bezel and the clutch cover until the two components are completely separated.

Step 22



- Lift the rear bezel by its bottom edge and rotate it away from the display assembly to separate the top edge.
- Remove the rear display bezel from the display assembly.

Step 23 — Display Inverter



- ⚠ The display inverter is a very thin and delicate circuit board that is easily broken. Use caution when handling.
- Carefully lift the inverter board out of the clutch cover.

Step 24



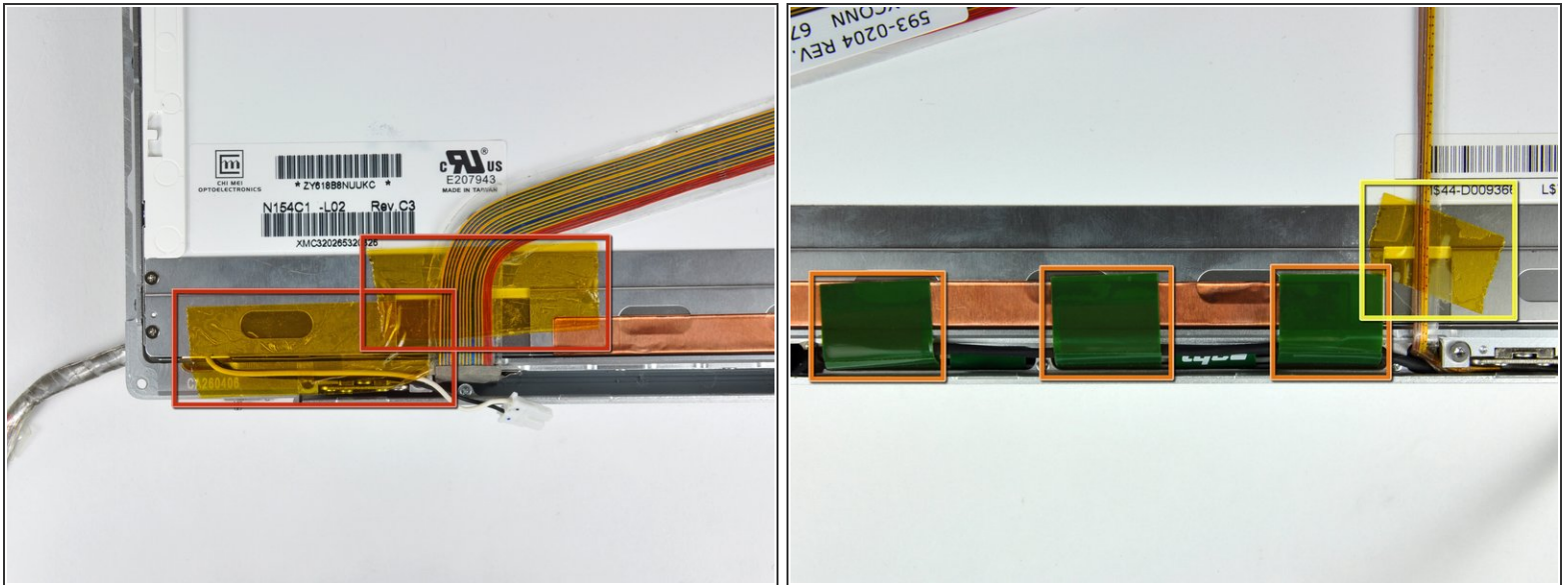
- Disconnect the LCD backlight from the inverter by pulling its connector away from the inverter board.

Step 25



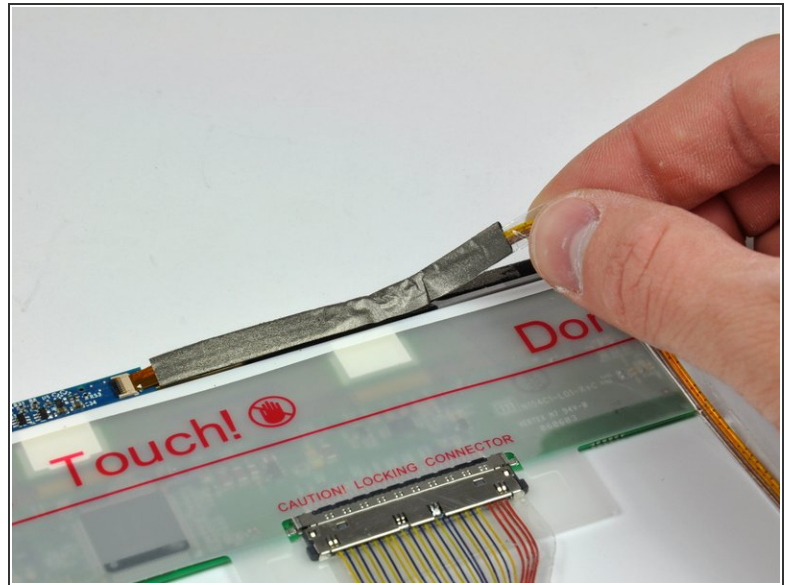
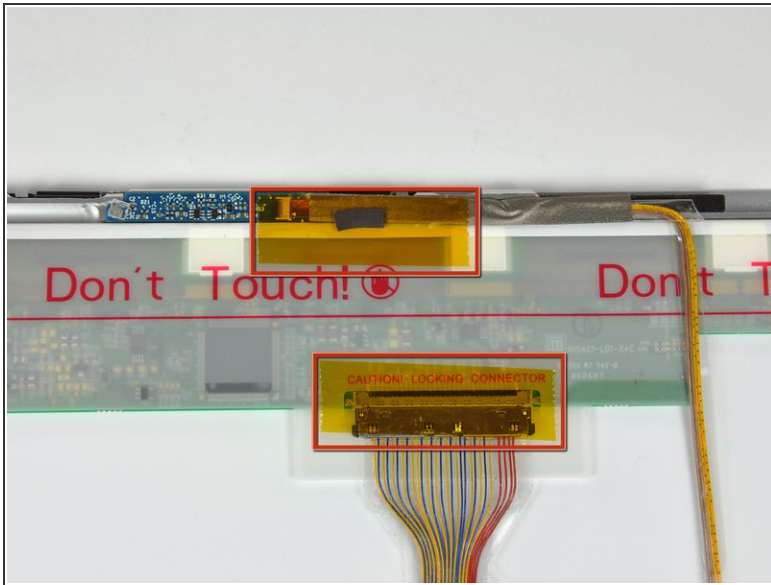
- ⚠ Be cautious to not put any strain on the inverter cable ground loop, as it is a very thin and delicate wire.
- Disconnect the inverter cable by pulling its connector away from the socket on the inverter.

Step 26 — Clutch Assembly



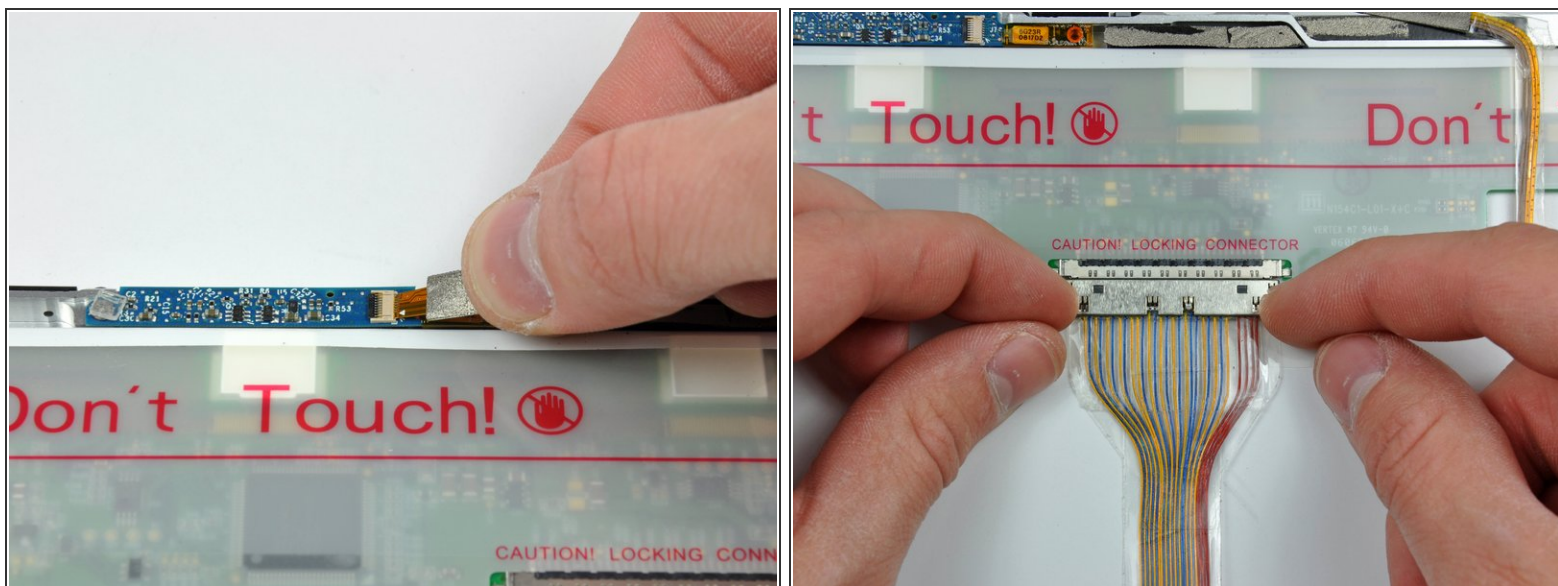
- Remove the pieces of yellow kapton tape from the bottom left corner of the display.
- Peel the three green antenna ground straps off the copper tape along the bottom edge of the LCD.
 - ⚠ The adhesive connecting these straps to the display is very strong. An edged tool is helpful to separate the adhesive while you peel the straps off.
- Remove the piece of tape securing the camera cable to the LCD.

Step 27



- Remove the pieces of tape covering the display data cable and camera cable connectors.
- Carefully peel the camera cable off the foam tape along the top edge of the LCD.

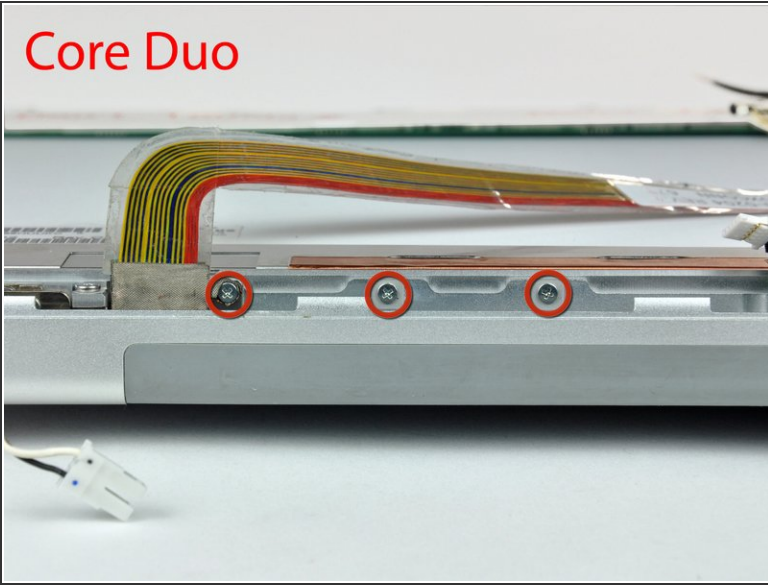
Step 28



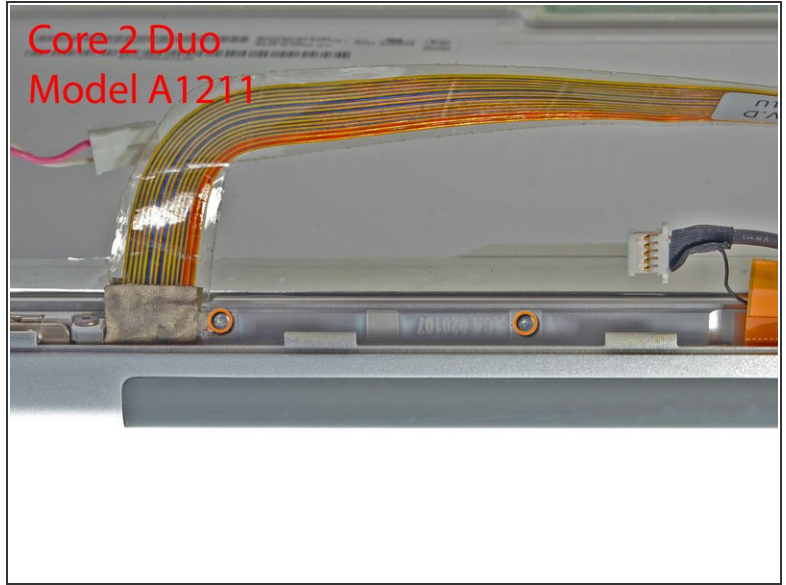
- Gently pull the camera cable away from its socket on the camera board.
- Pull the display data cable connector away from its socket on the LCD.
- Pull both cables parallel to the face of the logic board.

Step 29

Core Duo

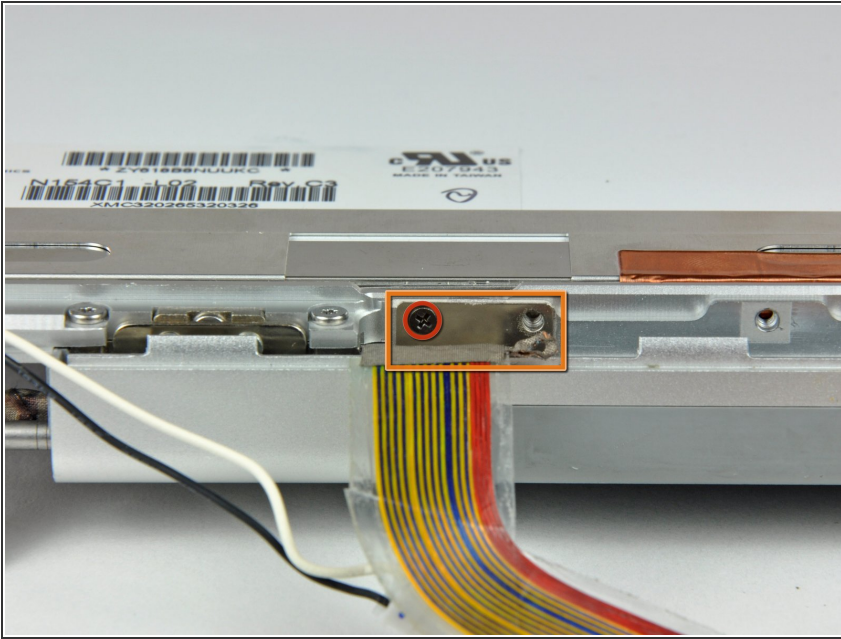


Core 2 Duo
Model A1211



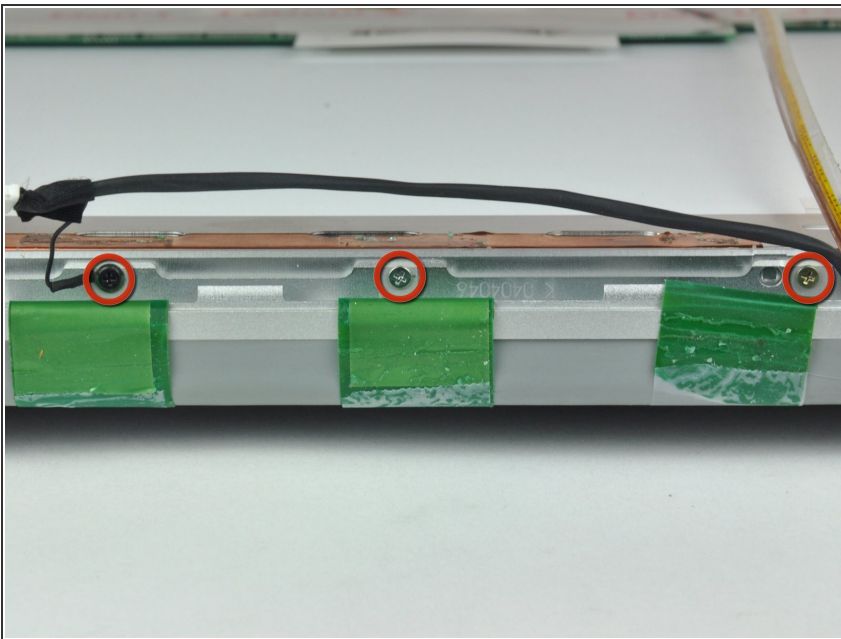
- If you have a Core Duo machine, refer to picture 1 and remove three Phillips screws connecting the clutch assembly to the lower edge of the front display bezel near the display data cable.
- If you have a Core 2 Duo Model A1211 machine, refer to picture 2 and remove two Phillips screws connecting the clutch assembly to the lower edge of the front display bezel near the display data cable.

Step 30



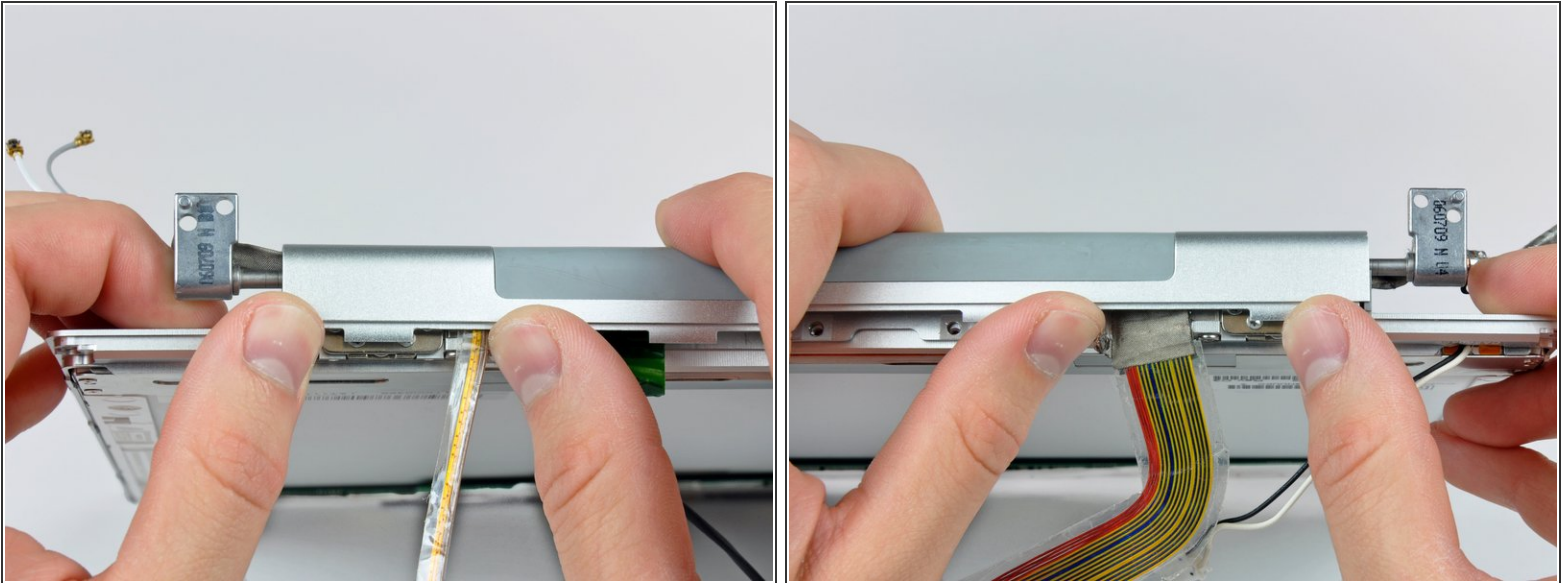
- Remove the small Phillips screw from behind the display data cable.
- Remove the small rectangular steel bracket by sliding it away from the right clutch hinge.
- ⓘ If you have a Core 2 Duo Model A1211, there is no steel bracket. Simply remove the screw and continue to the next step.

Step 31



- Remove three Phillips screws attaching the clutch assembly to the lower edge of the front display bezel.
- ⚠ The inverter cable ground loop is a very thin and delicate wire. Work gently.

Step 32



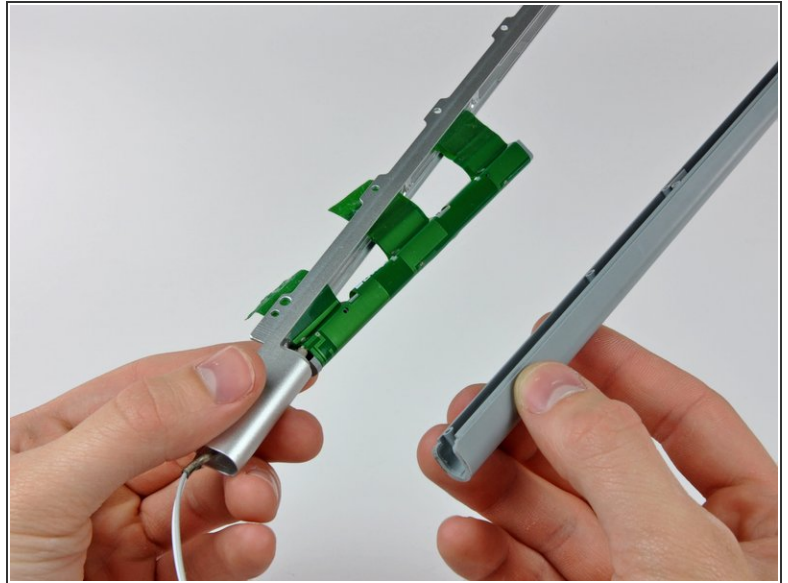
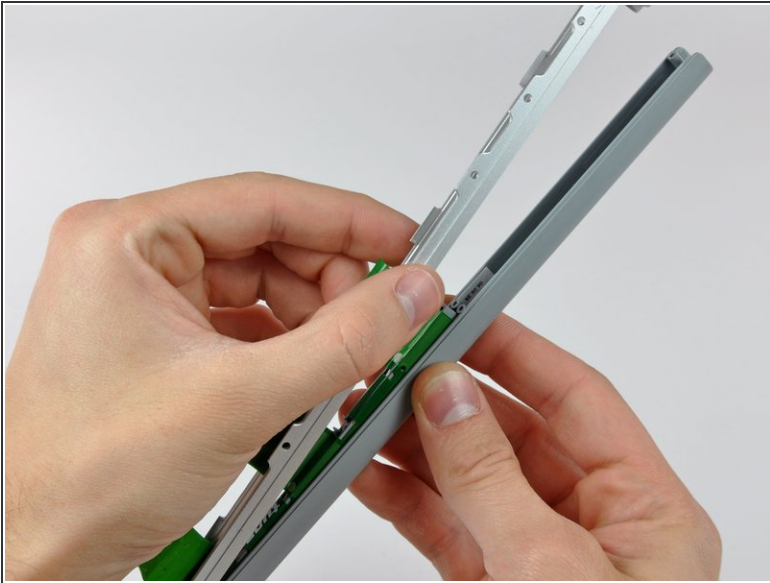
- Push the open edge of the clutch cover away from the left clutch hinge to pop it off the clips attaching the two parts.
- ⓘ If necessary, repeat this process for the right side of the clutch assembly.
- Remove the clutch assembly from the front display bezel.

Step 33 — Antenna Cover



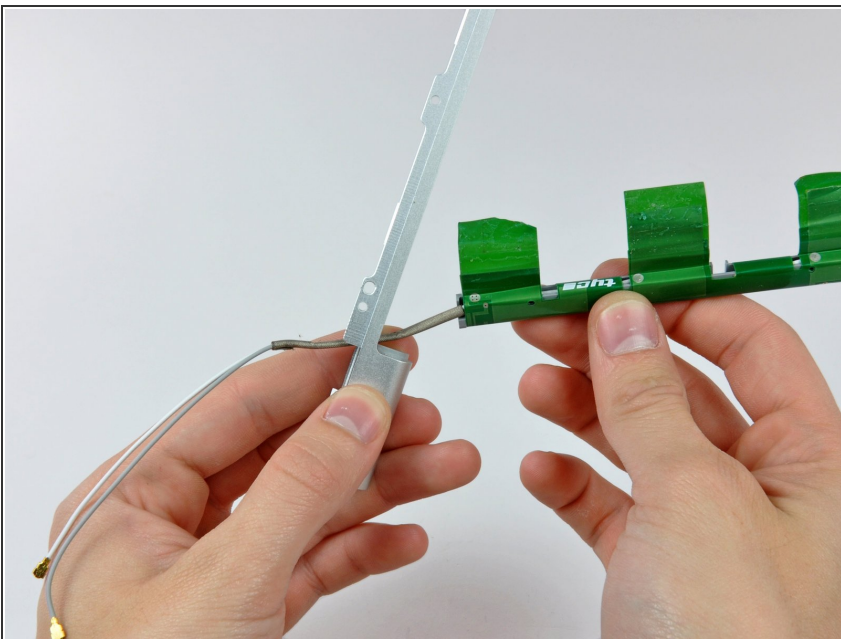
- Remove the five small Phillips screw securing the plastic antenna cover to the inside of the clutch cover.

Step 34



- Pull the antenna cover off the clutch cover, being careful not to damage the antenna cables.

Step 35 — Antenna Cables



- Remove the antenna cables from the clutch cover, minding the antenna connectors that may get caught on the clutch cover.

To reassemble your device, follow these instructions in reverse order.