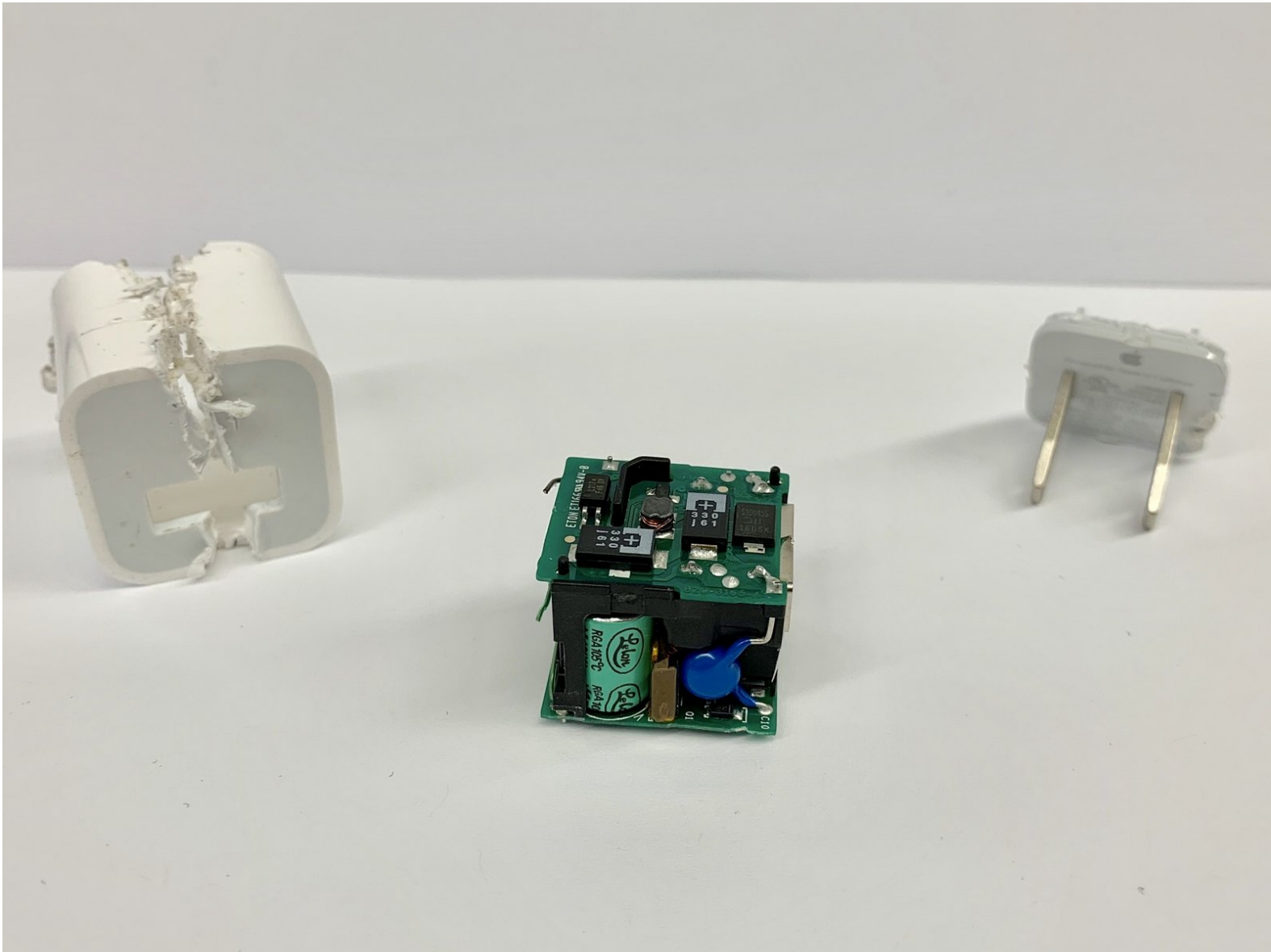




Apple USB Power Adapter Teardown

The Apple USB power adapter converts line power...

Written By: Juan Gonzalez



INTRODUCTION

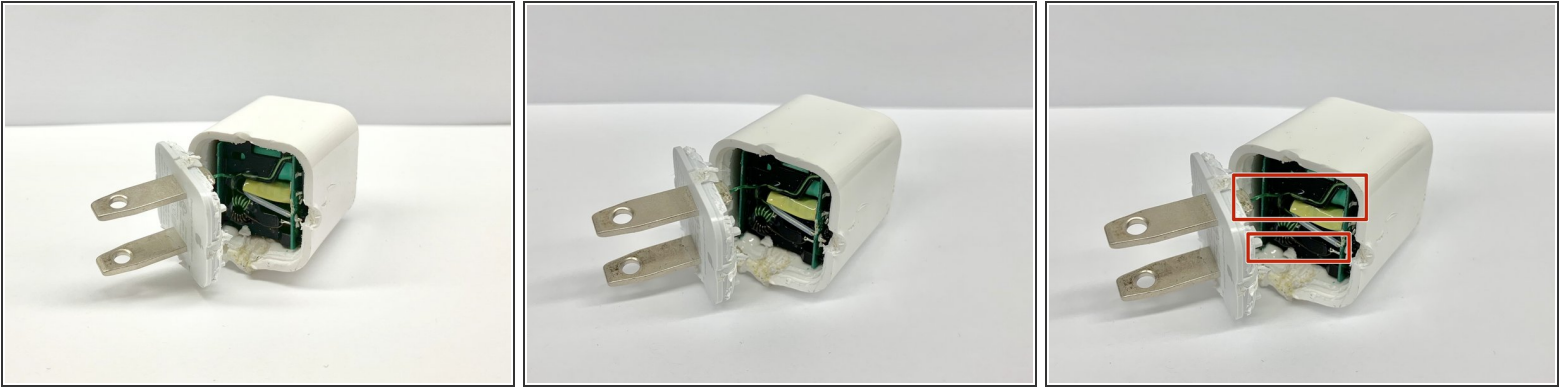
The Apple USB power adapter converts line power 100V-240V AC into a regulated 5V/1A DC supply. The 100V to 240V input voltage capability of the charger allows its use in different wall port supplies, making the charger adaptable.



TOOLS:

- [Safety Glasses](#) (1)
 - [Leather Work Gloves](#) (1)
 - [Hack saw](#) (1)
 - [Jimmy](#) (1)
 - [Flush Macro Cutter Heavy Duty C.H.P. TRR-5000](#) (1)
 - [Hammer](#) (1)
 - [Large Clamp](#) (1)
 - [Chisel](#) (1)
-

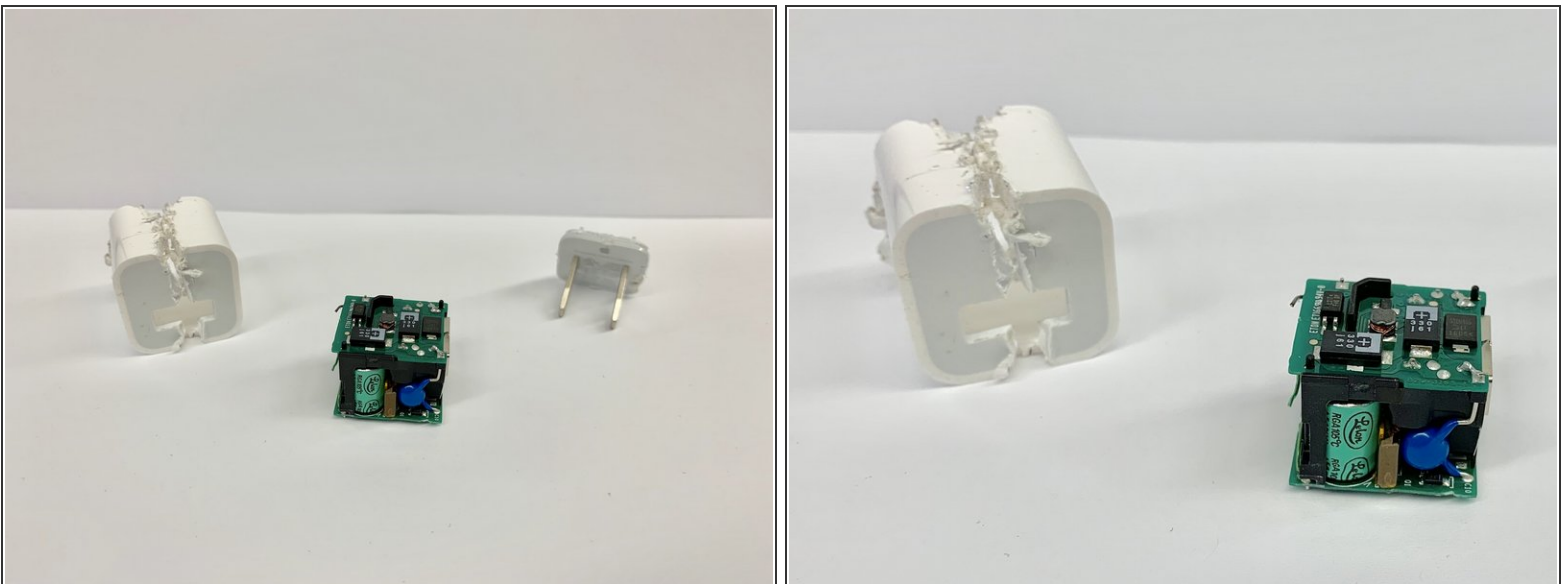
Step 1 — Separating the input panel



- Use a hammer and a small chisel to carefully force the input panel open
- Clamping the device helps prop the input panel open but, do not pull the panel away from the device forcefully, as there are small wires connected to the device components.

⚠ Be careful not to force the chisel into the device as you could damage internal components.

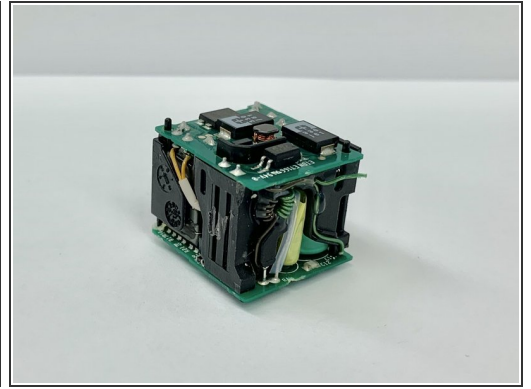
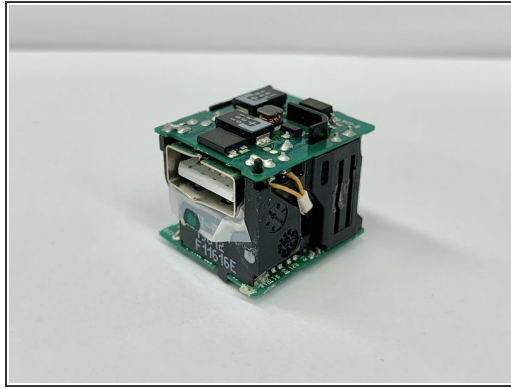
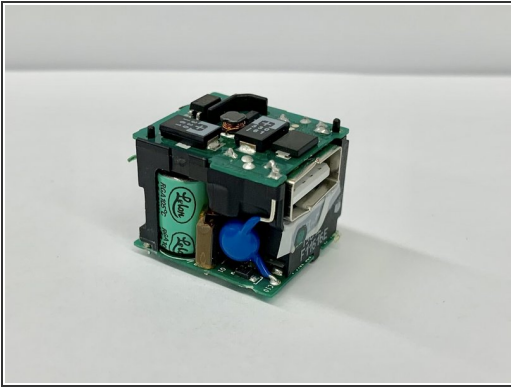
Step 2 — Removing plastic casing



- Use dyke and pliers to cut outside casing to pry open the shell and remove the circuitry.
- Recommend using hand saw to cut around the plastic.

⚠ Be careful not to cut forcefully as to prevent the internal components from getting damaged.

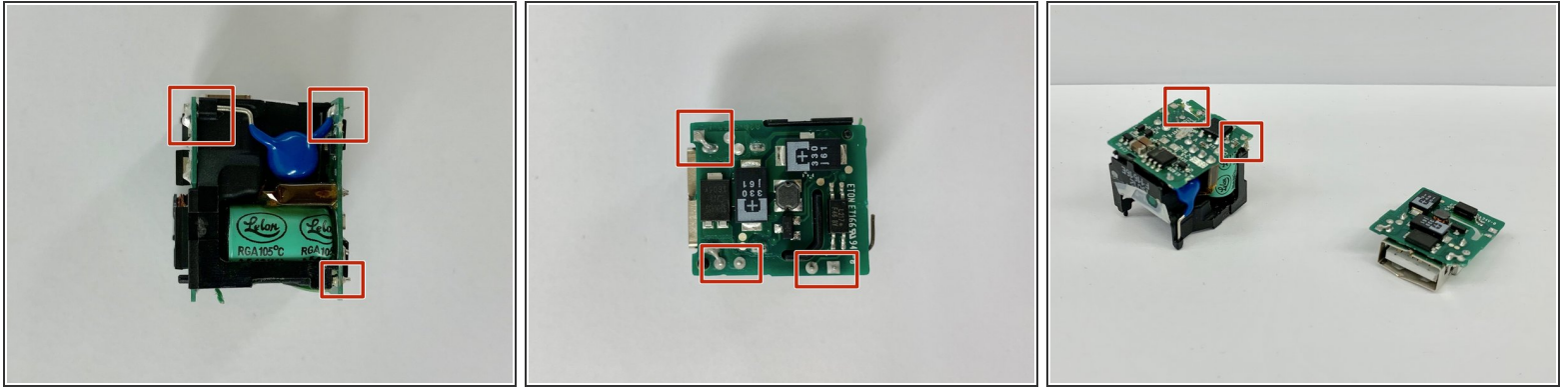
Step 3 — Isolating internal components



- Isolate the internal electrical components from the casing
- Recommend unsoldering the wires from the input panel.
- ⓘ For help desoldering connections, follow this useful guide on [How To Solder and Desolder Connections](#).

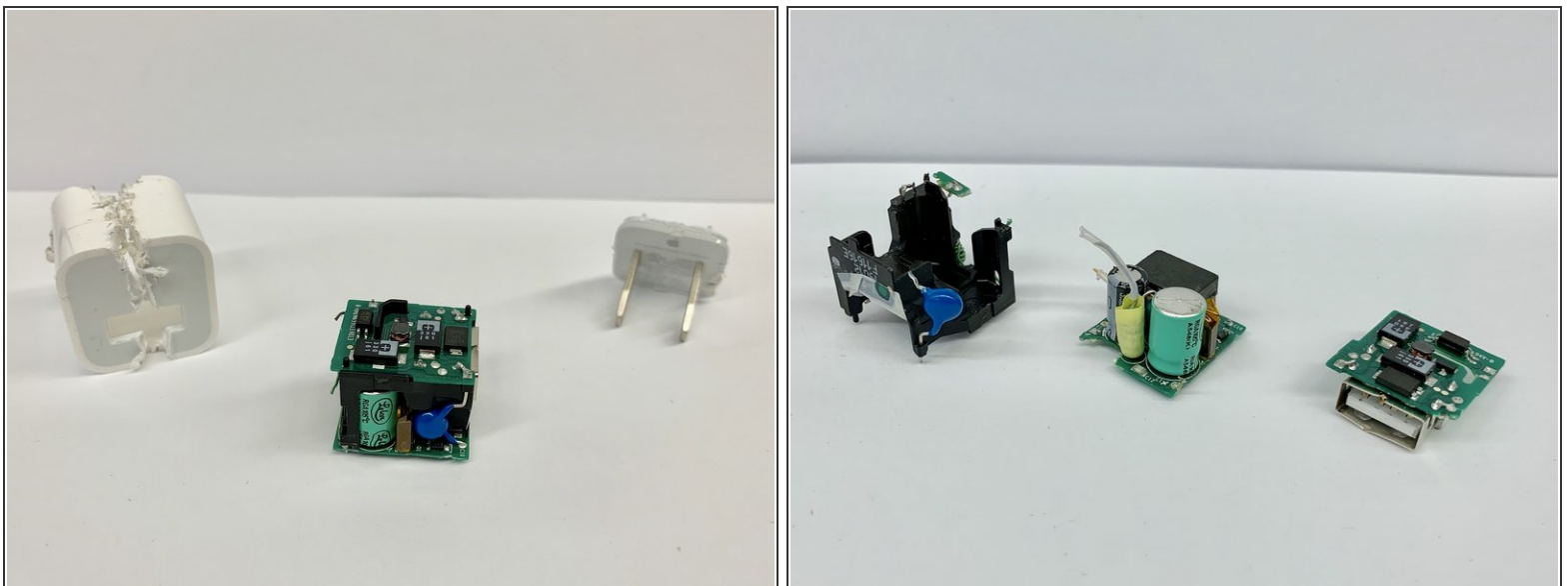
⚠ Use caution when soldering. The heated tip may cause damage to the board, the components, or burn you.

Step 4 — Accessing individual components



- Unsolder components that connect to the bottom and top circuit boards.
 - Detach the top and bottom circuit boards from the plastic separator.
- i** For help desoldering connections, follow this useful guide on [How To Solder and Desolder Connections](#).
- ⚠** Use caution when soldering. The heated tip may cause damage to the board, the components, or burn you.

Step 5 — Exploration



- Observe that once the circuit boards are separated individual components can be accessed.

