



Dell Latitude E5500 CD ROM Drive Replacement

How to replace the Dell Latitude E5500 CD ROM Drive.

Written By: Maxwell Whalen



INTRODUCTION

CD ROM drives are the units used by computers to read CDs. Occasionally, loose cables or damage can cause the CD ROM drive to be unable to read disks, show up on your computer, or even open the drive drawer. If this has happened to your Dell Latitude E5500 and you are sure the drivers and disks are not the issue, then it may be time to inspect the CD ROM drive. If you have ten minutes and a Phillips #2 screwdriver, this quick guide can help you remove it for repair or replacement.

TOOLS:

- [Phillips #2 Screwdriver](#) (1)
-

Step 1 — CD ROM Drive



- Place the front of the laptop on the table so that the hinges are facing away from yourself.

Step 2



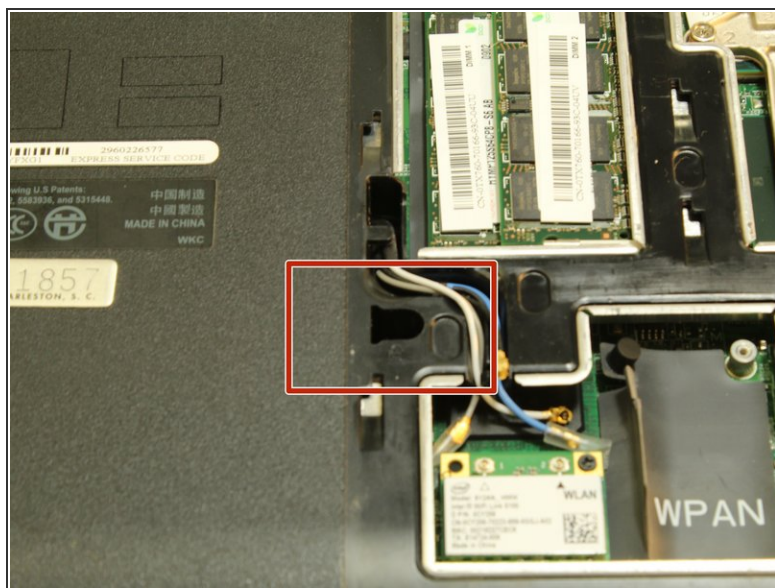
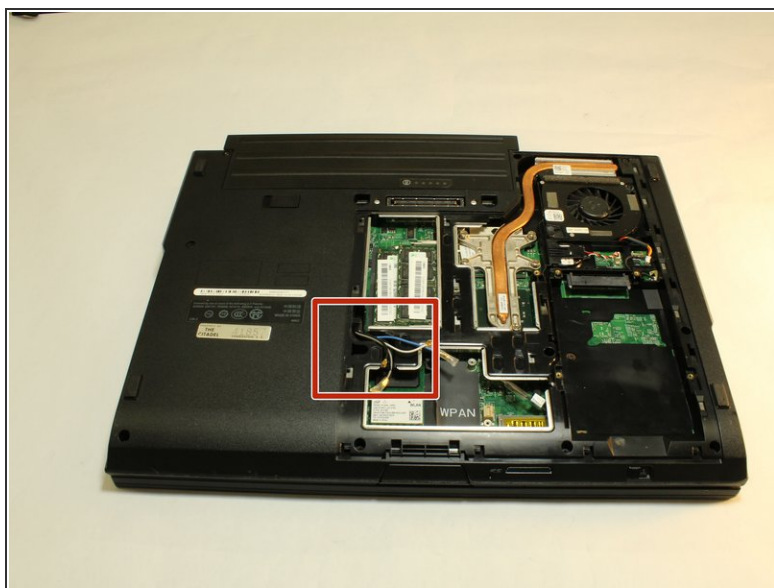
- Remove the screw located in the red circle shown.

Step 3



- Apply a small amount of pressure and slide the cover towards yourself in the direction indicated.

Step 4



- Locate the slot for the CD ROM ejector found inside the red box shown.

Step 5



- Using a #2 Phillip's head screwdriver, push the CD ROM ejector to the left.
- Once the CD ROM clicks out, carefully slide it out of the laptop.

To reassemble your device, follow these instructions in reverse order using your new CD Rom.