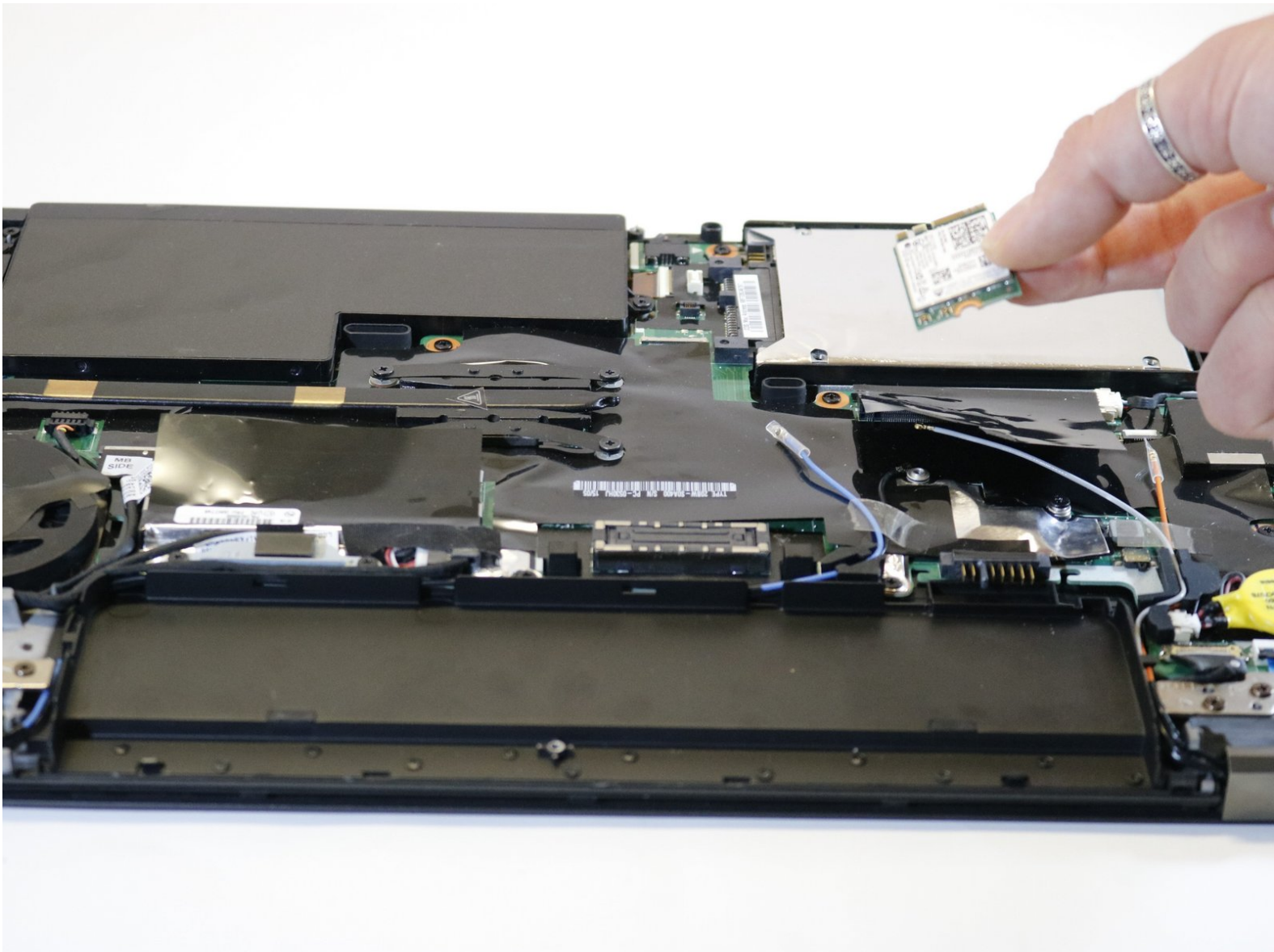




Lenovo Thinkpad T450s Network Adapter Card Replacement

How to replace the network adapter card in a Lenovo Thinkpad T450s.

Written By: Hayden Hausman



INTRODUCTION

If your device is failing to successfully connect to any wireless network you can find step by step instructions in this guide on how to replace your Network adapter.



TOOLS:

- [Phillips #0 Screwdriver](#) (1)
 - [Metal Spudger](#) (1)
-

Step 1 — Battery



- Turn off device before starting
- ❗ Flip the laptop upside down so you have access to the battery.

Step 2



- Slide lock button 1 to the unlock position and gently slide away from your body.

Step 3



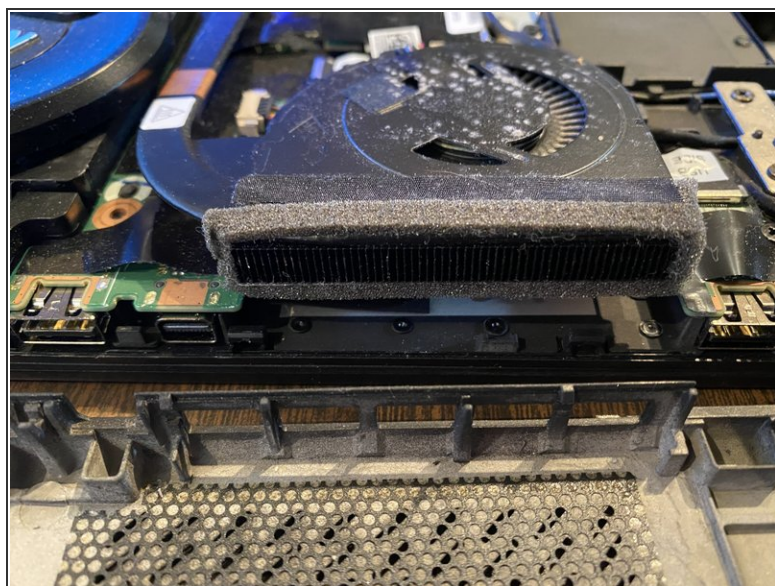
- Slide lock button 2 to the unlock position and continue gently sliding until the battery is removed.

Step 4 — Lenovo Thinkpad T450s Bottom Panel Removal



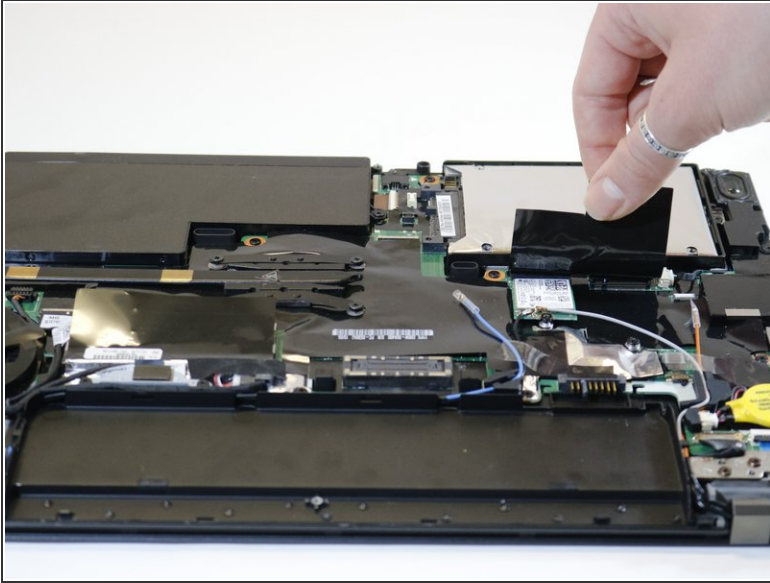
- Flip the device over and lay it down with the underside facing upwards.
- Unscrew all 8 screws. While they should not come out completely, in some cases, the plastic retaining washers may come off of one or more of the screws, allowing them to come out completely. - should this happen, look for a loose, tiny black plastic washer once the case is open. It's possible, in some cases, to reattach the retaining washer.

Step 5



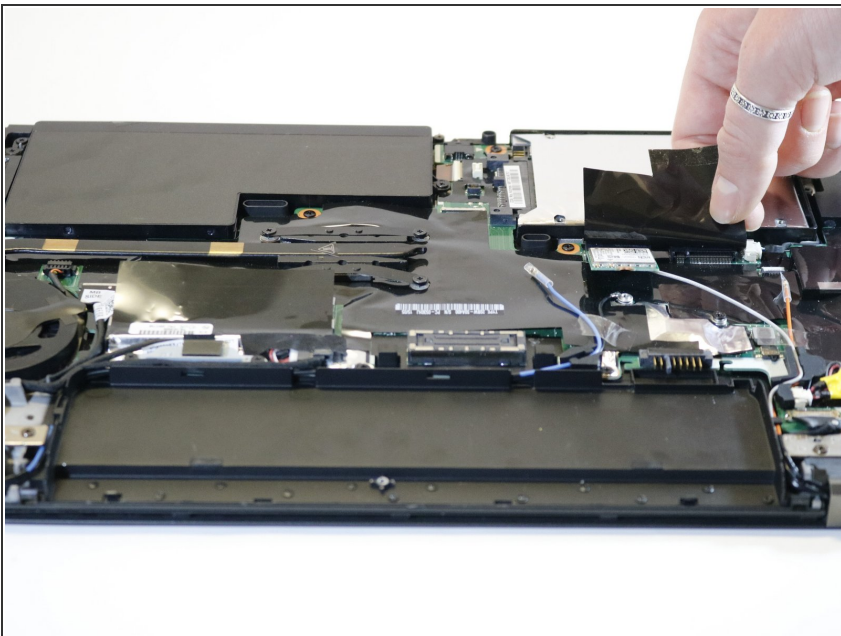
- Pry the bottom from the computer until it pops out.
- In some cases, the vented side of the case may cling to the heat sink; appears to be adhesive. Take care when separating.

Step 6 — Network Adapter Card



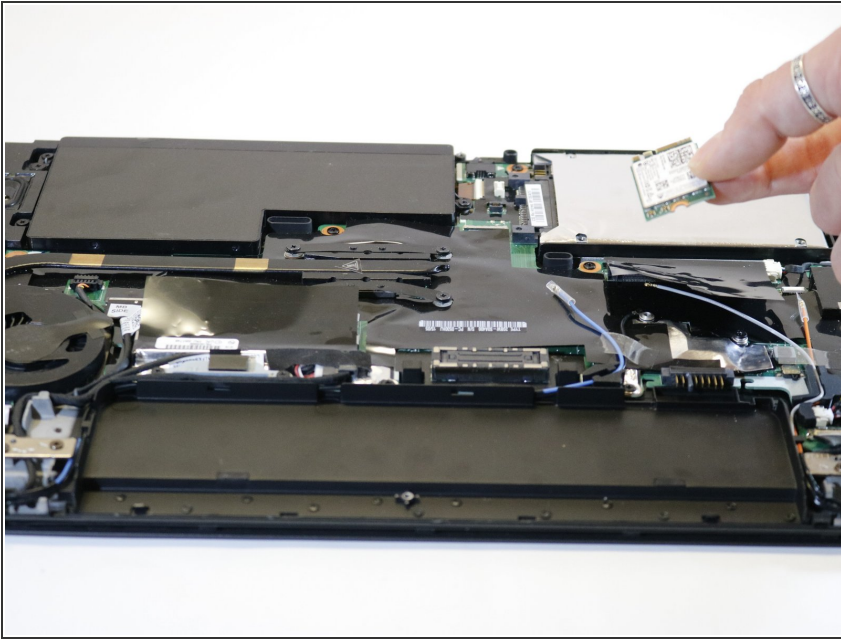
- Remove the single 3mm screw holding the network adapter in place.
- ❗ You will have to locate and lift up a small, black area of film covering the screw and network adapter.

Step 7



- Remove the two cables connected (1 black, 1 grey) from the network adapter.
- ❗ The cables will pop off once the screw is removed.

Step 8



- Pull the network adapter out of the device.

To reassemble your device, follow these instructions in reverse order.