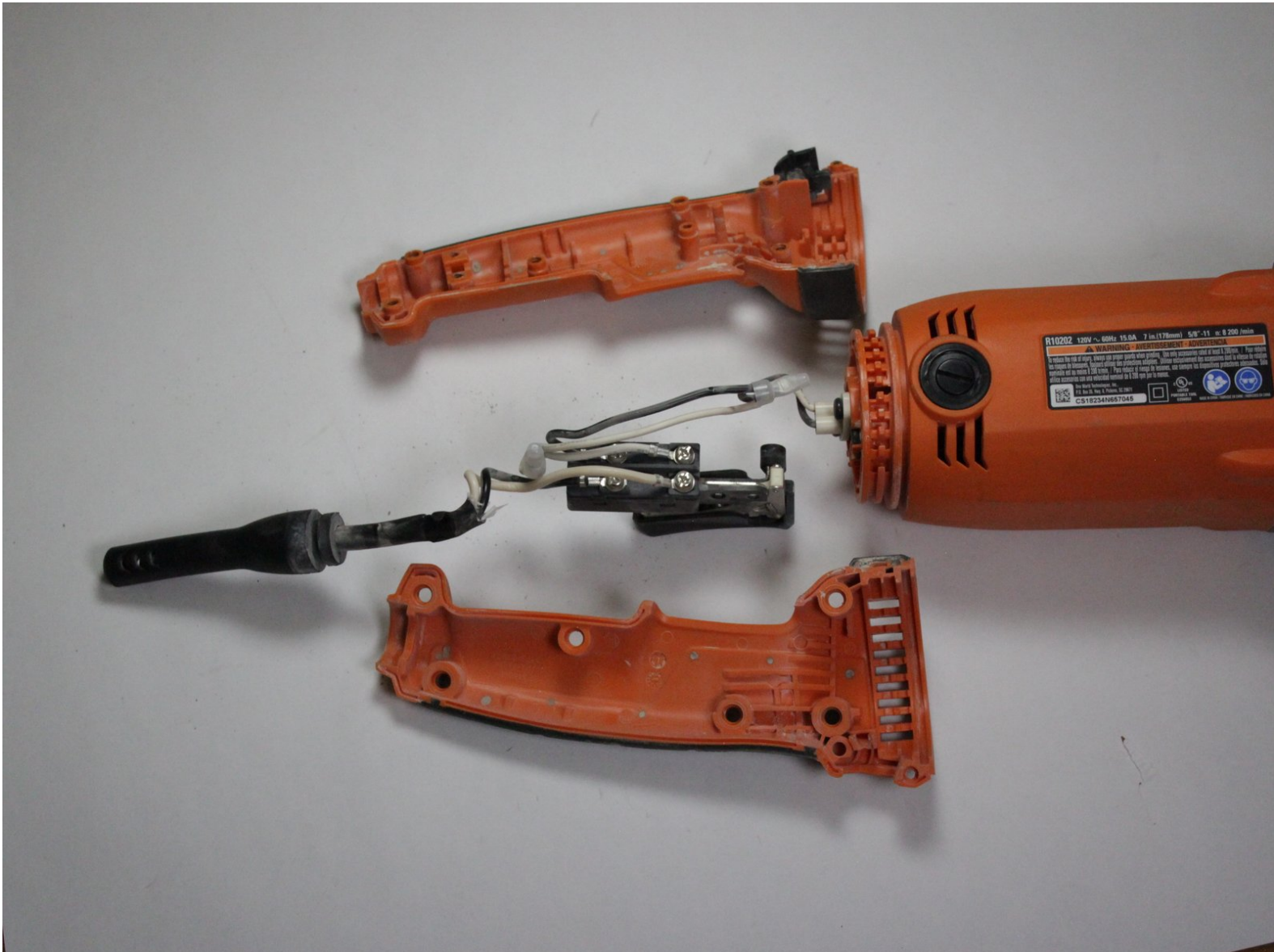




Ridgid Angle Grinder R10202 Handle Disassembly

How to disassemble a Ridgid Angle Grinder R10202 handle.

Written By: Parker Massie



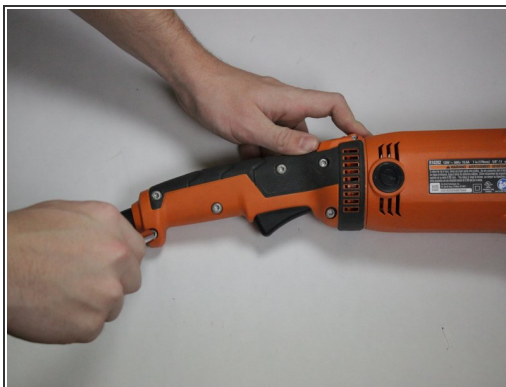
INTRODUCTION

Disassembling the handle assembly will be necessary for any rewiring or switch replacement needs. Jammed switches or a damaged power cord will require these preliminary steps for repair.

TOOLS:

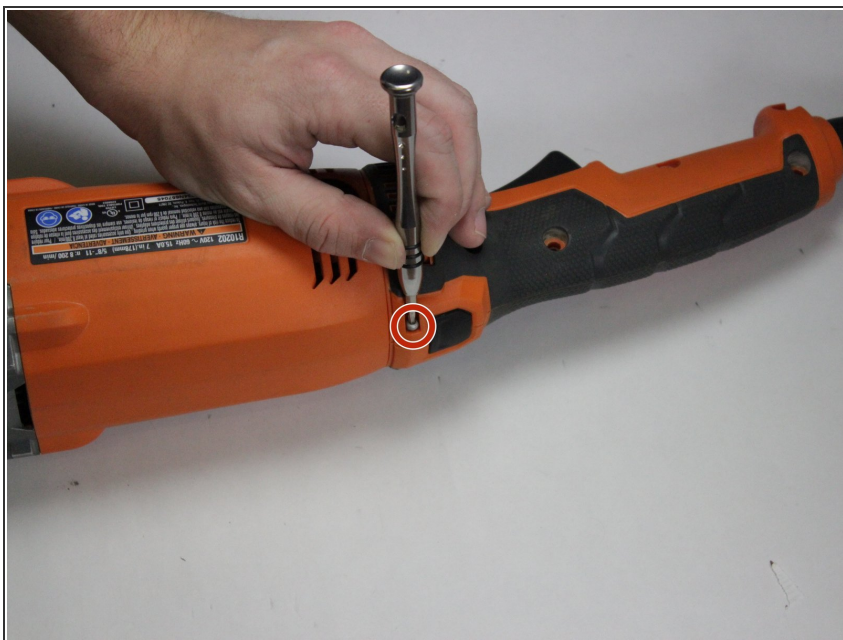
- [T20 Torx Screwdriver](#) (1)
 - [T5 Torx Screwdriver](#) (1)
 - [T10 Torx Screwdriver](#) (1)
 - [Phillips #1 Screwdriver](#) (1)
-

Step 1 — Ridgid Angle Grinder R10202 Handle Disassembly



- Using a Torx T20 screwdriver, unscrew the five M5 x 16 mm screws.
- Using the T20 screwdriver, remove the M5 x 28 mm screw.

Step 2



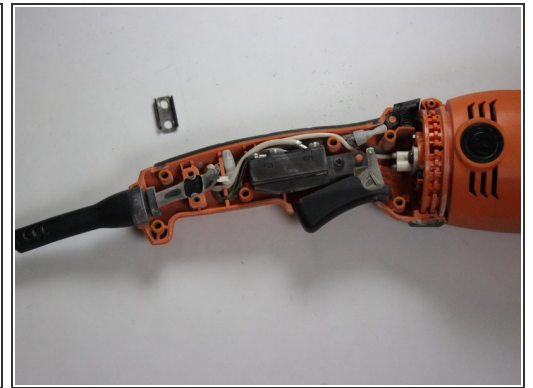
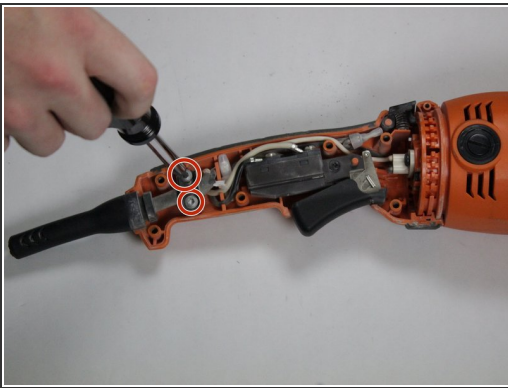
- Using a Torx T10 screwdriver, remove the M3 x 10mm screw.

Step 3



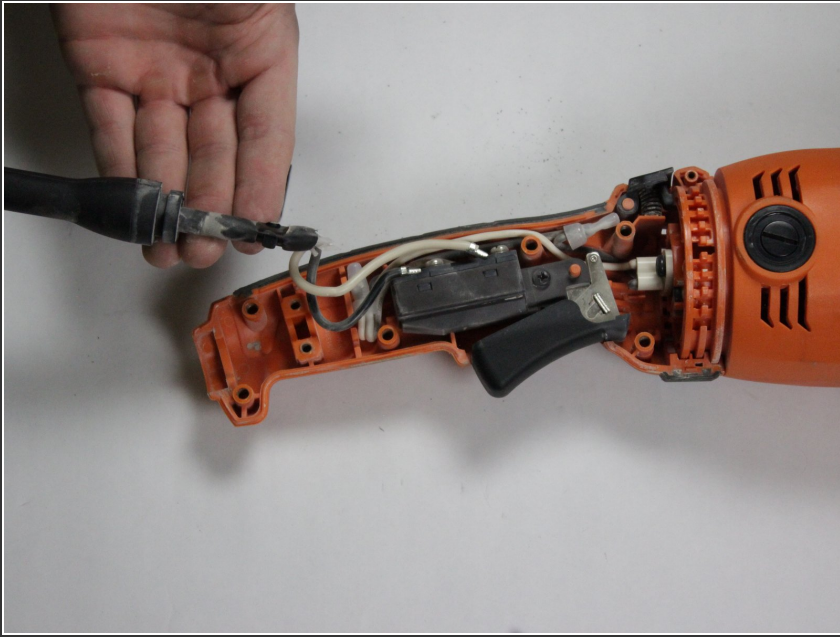
- Gently pull off the right side handle.

Step 4



- Using a hex head screwdriver, remove the two 8-16 x 1/2in screws.

Step 5



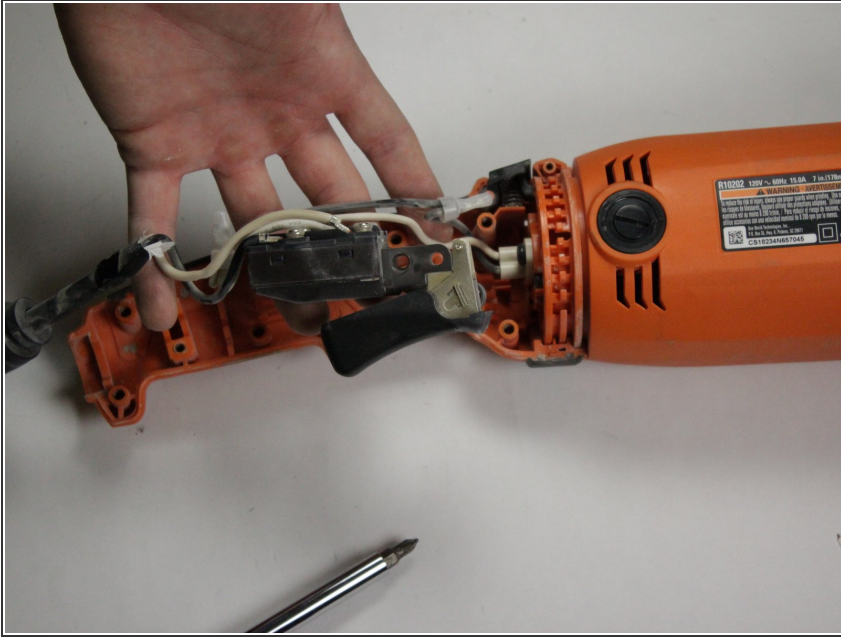
- Gently pull away the bend relief.

Step 6



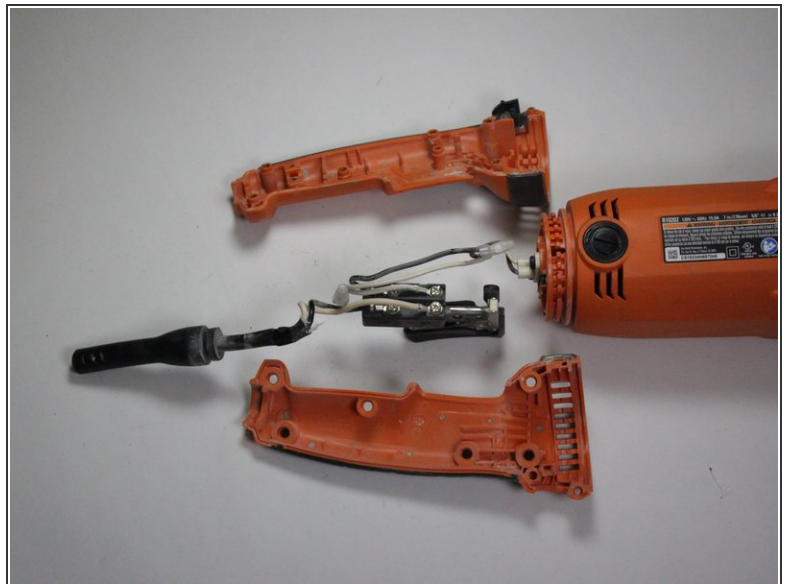
- Remove the one M4 x 14 mm screw using a Phillips screwdriver.

Step 7



- Gently lift away the switch and wires.

Step 8



- Press down the handle lock button.
- Force-ably twist and pull away the left side handle assembly.

To reassemble your device, follow these instructions in reverse order.