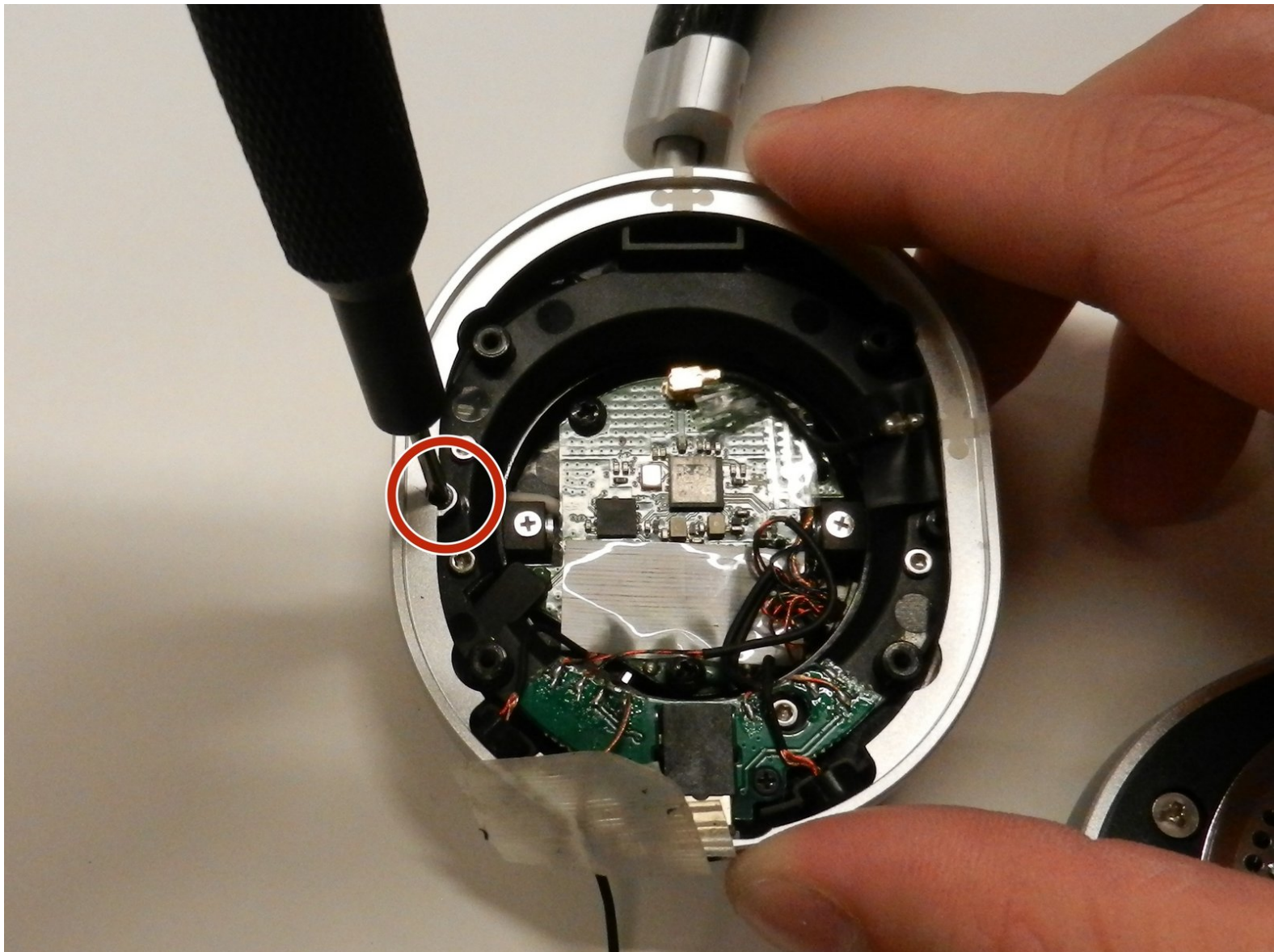




# Master and Dynamic MW50 Wireless Connector Replacement

This will replace the Master and Dynamic MW50 Bluetooth wireless connector.

Written By: Neil Patel



# INTRODUCTION

If your device is not connecting properly, it might be necessary to replace the Bluetooth wireless connector. This guide will show 7 steps for removing the wireless connector. Soldering is required for this replacement, If you don't know how to solder, click [here](#) for a great guide.



## TOOLS:

- [Desoldering Braid](#) (1)
  - [Soldering Iron](#) (1)
  - [Solder](#) (1)
  - [Staples](#) (1)
  - [Tweezers](#) (1)
  - [Y1 Tri-point Screwdriver](#) (1)
  - [Jimmy](#) (1)
  - [JIS #00 Screwdriver](#) (1)
  - [T4 Torx Screwdriver](#) (1)
-

## Step 1 — Master and Dynamic MW50 Disassembly



- Pull the cushion off of the desired side by gripping the top of the headphones and pulling the cushion off.

## Step 2



- Remove the four 5mm screws from the earpiece with a Y1 Triwing screwdriver.

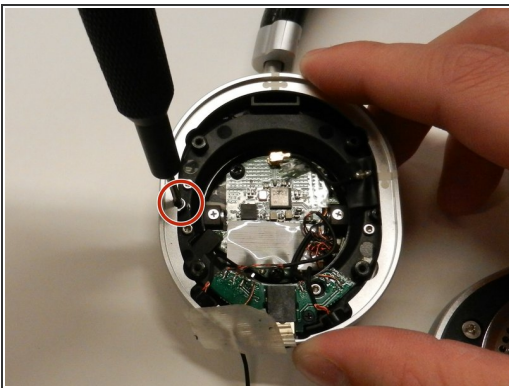


### Step 3



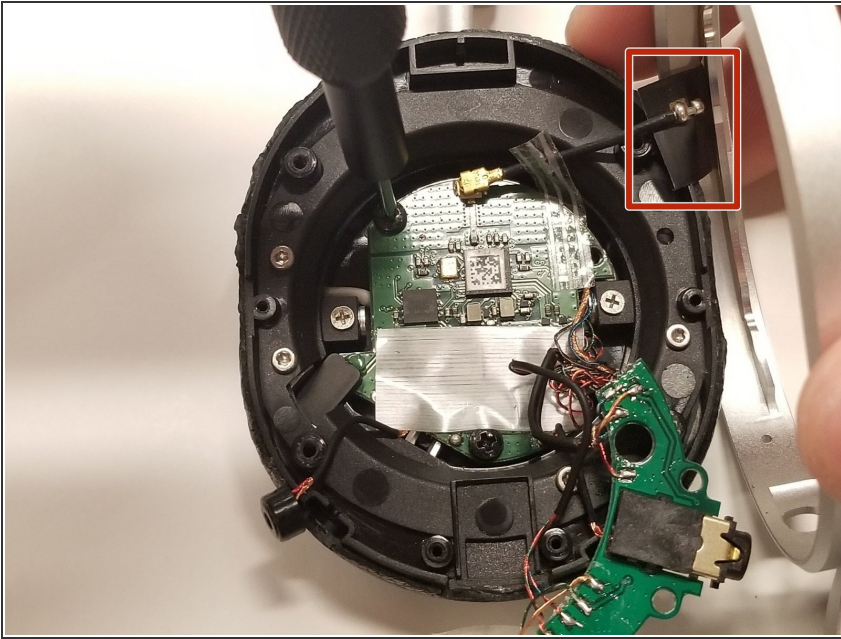
- Use the Jimmy to lift up the black cover to get inside the device.

### Step 4 — Wireless Connector



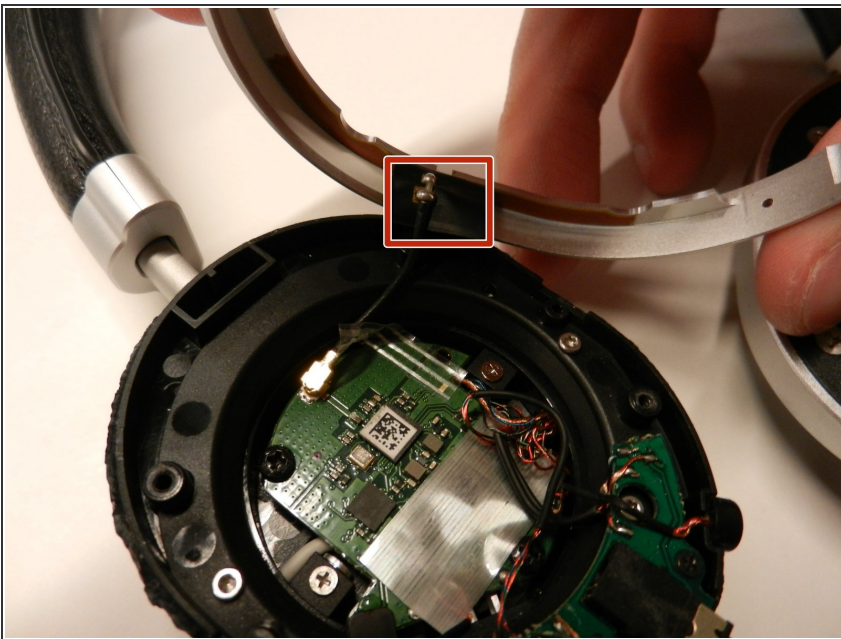
- Remove the 2mm screw holding the side cover plate in place with a JIS #00 screwdriver.
- Move the side cover off to the side.
- ⓘ The black cable connected to the motherboard from the side cover can be gently pulled off from the motherboard side. It isn't soldered on.

## Step 5



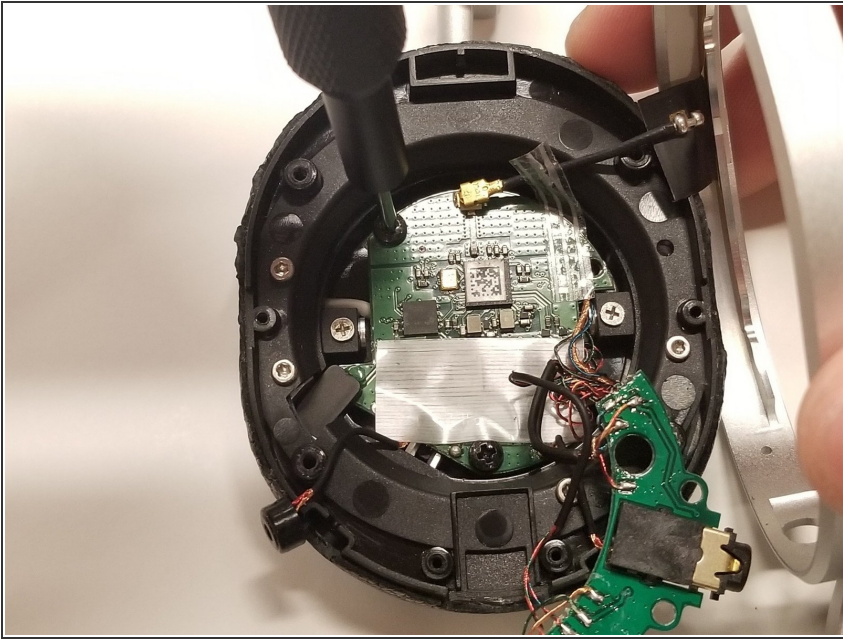
- Pull the black tape holding the connector in place.

## Step 6



- Desolder the connector from the motherboard.
- ☑ Refer to this picture for soldering the connector back to the motherboard.

## Step 7



- Solder the new Bluetooth connector into place.

To reassemble your device, follow these instructions in reverse order.