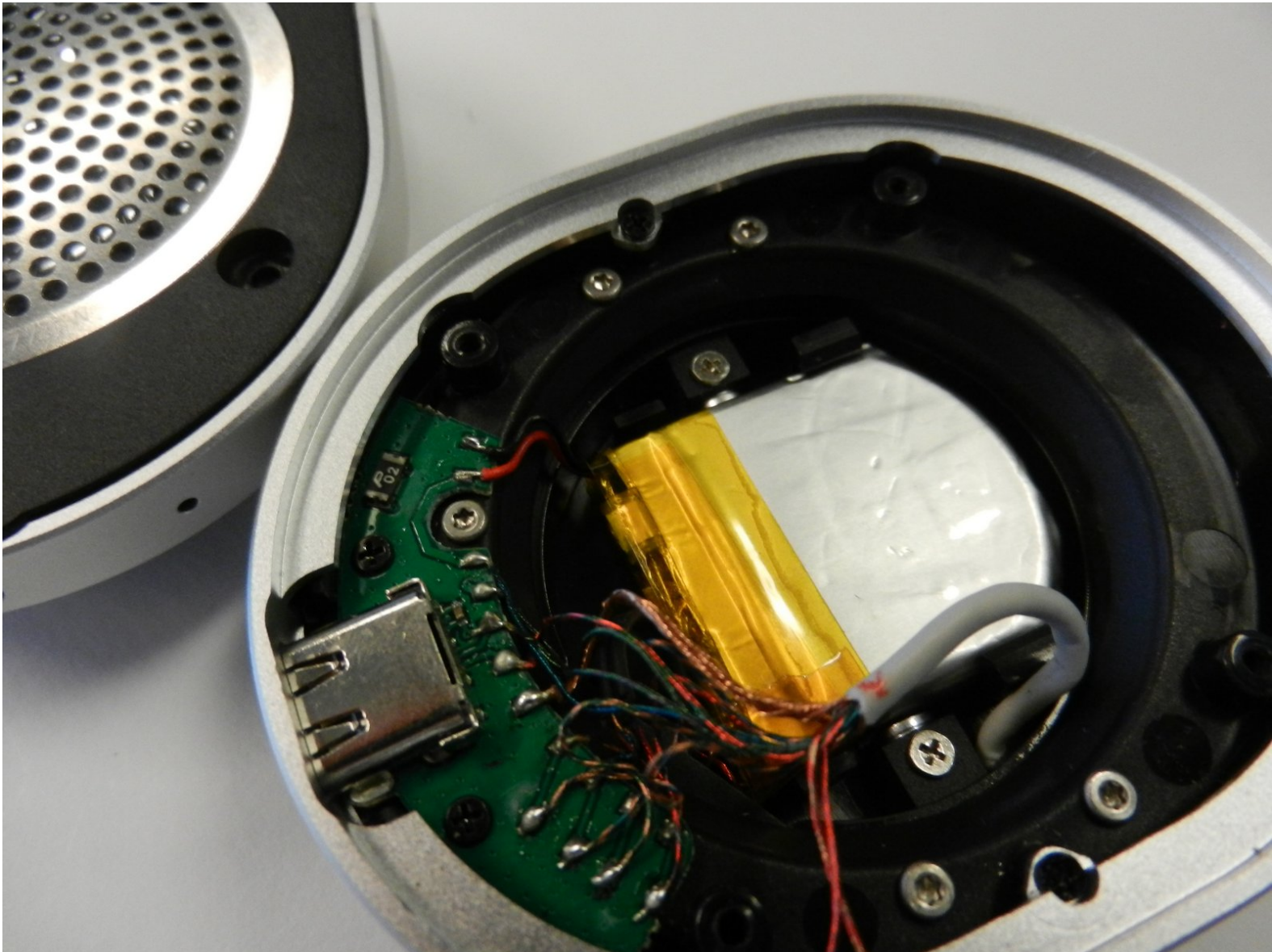




# Master and Dynamic MW50 Charging Port Replacement

This guide will show you how to replace the charging port in your Master and Dynamic MW50.

Written By: Tyler Guffey



---

## INTRODUCTION

You will want to disassemble the right side of the headphones. You will need to know how to solder before beginning this guide. If you don't know how to solder, click [here](#) for a great guide.

---



### TOOLS:

- [Y1 Tri-point Screwdriver](#) (1)
  - [Jimmy](#) (1)
  - [Desoldering Braid](#) (1)
  - [Soldering Iron](#) (1)
  - [Solder](#) (1)
  - [Staples](#) (1)
  - [JIS #00 Screwdriver](#) (1)
-

## Step 1 — Master and Dynamic MW50 Disassembly



- Pull the cushion off of the desired side by gripping the top of the headphones and pulling the cushion off.

## Step 2



- Remove the four 5mm screws from the earpiece with a Y1 Triwing screwdriver.

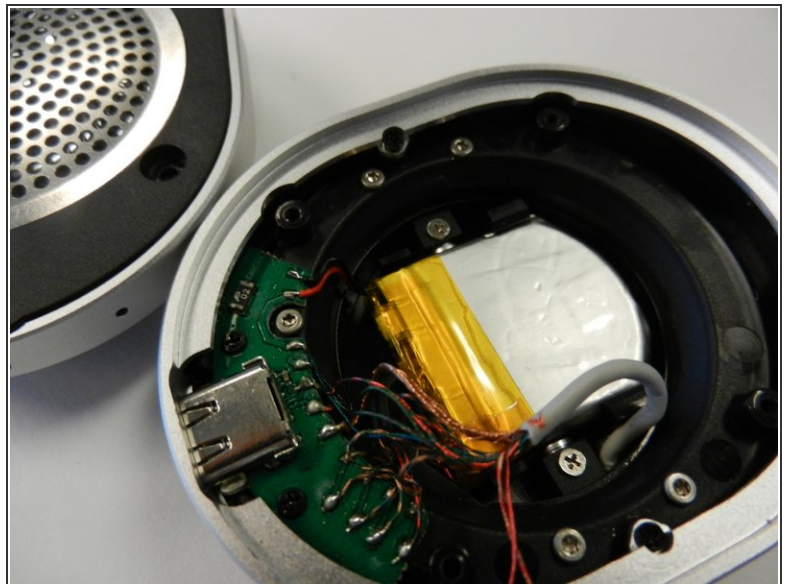
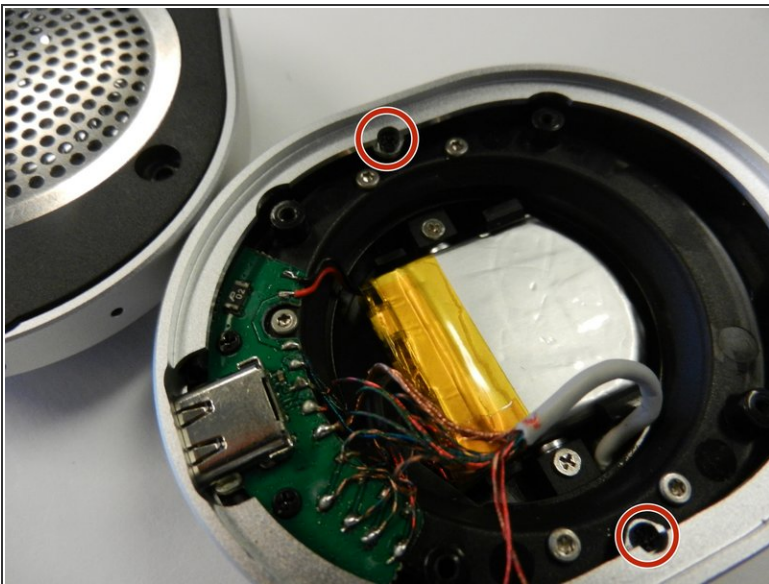


### Step 3



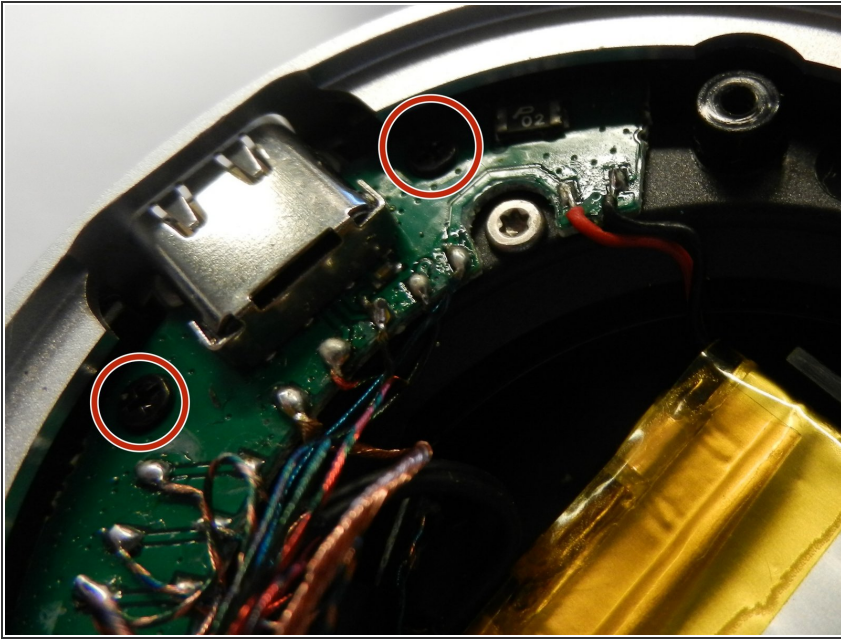
- Use the Jimmy to lift up the black cover to get inside the device.

### Step 4 — Charging Port



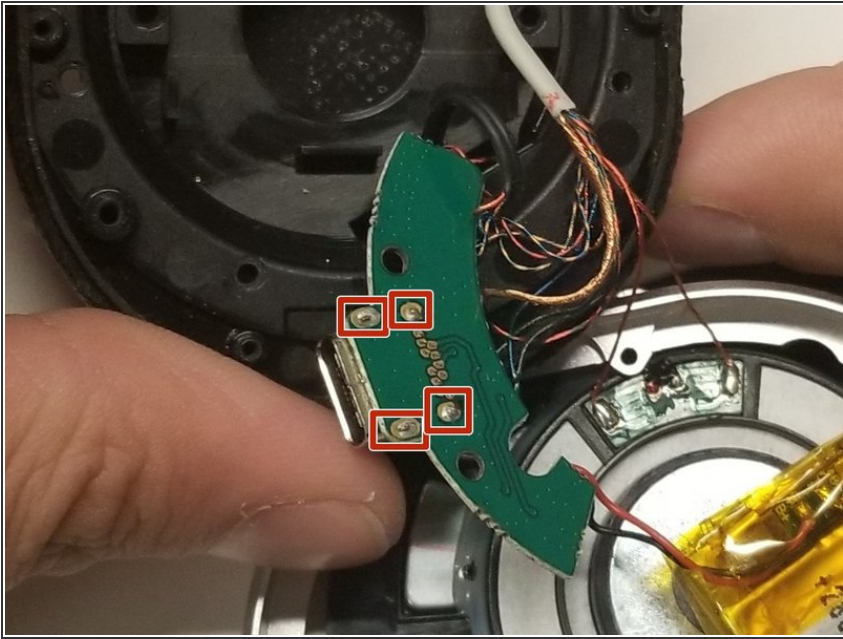
- Remove the two 2mm screws pictured with a JIS #00 screwdriver.
- Gently pull the silver cover off of the ear piece.

## Step 5



- Remove the two 2mm screws shown with a JIS #00 screwdriver.

## Step 6



- Lift up the mother board with the attached charging port to see the soldering points. You must desolder these points in order to detach (and re-attach) the charging port.

To reassemble your device, follow these instructions in reverse order.