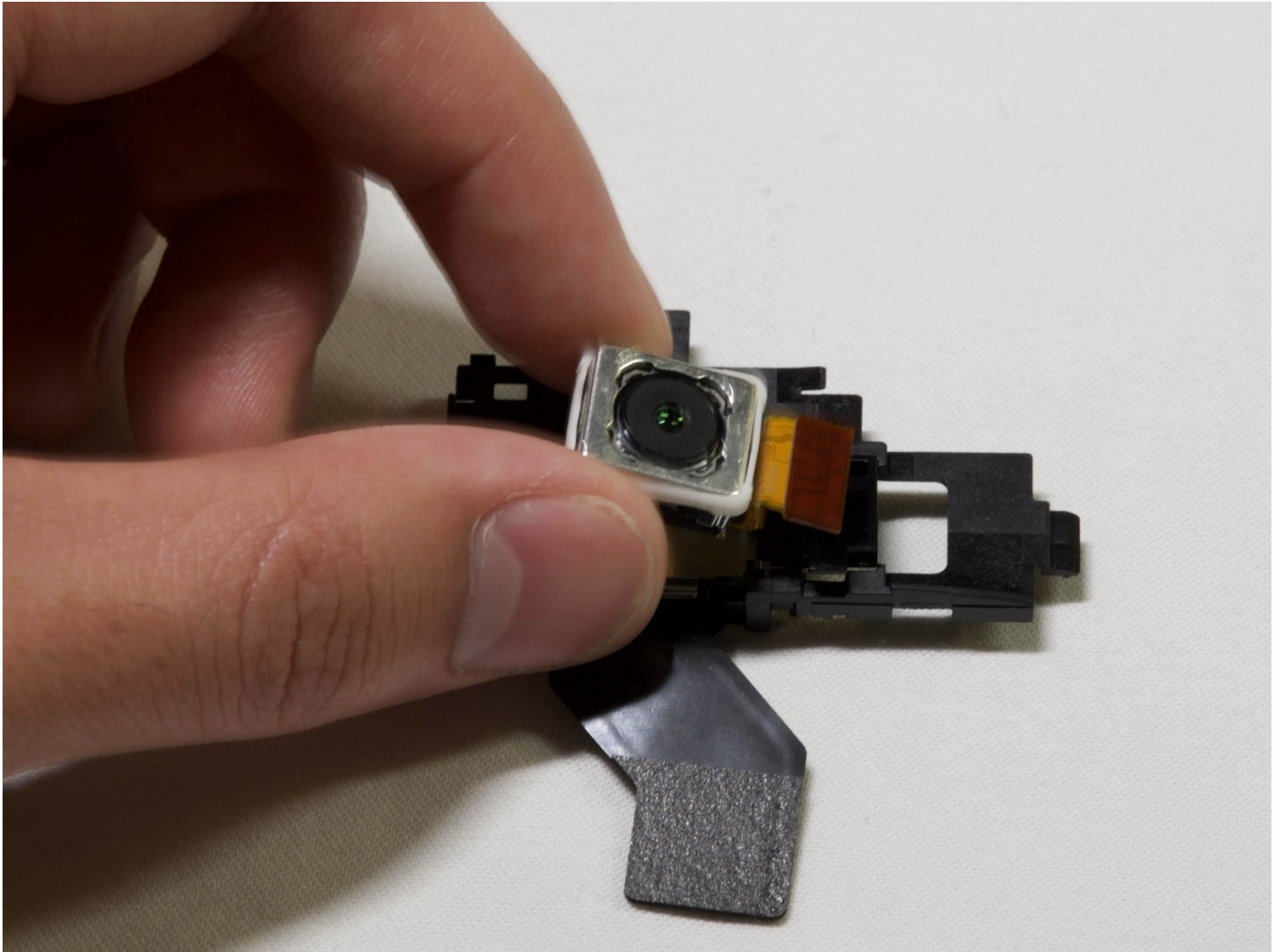




Sony Xperia XZ2 Rear Camera Replacement

If the rear camera of your phone is cracked or...

Written By: Dan Nguyen



INTRODUCTION

If the rear camera of your phone is cracked or not functioning correctly, it may be time for a replacement. This guide will walk you through replacing the rear camera on your Sony Xperia XZ2.

For this guide you will need a hair dryer, opening picks, angled tweezers, a spudger, and a Phillips #00 screwdriver.

TOOLS:

[Hair Dryer](#) (1)

[iFixit Opening Picks \(Set of 6\)](#) (1)

[Tweezers - Pro/ESD/Angled](#) (1)

[Spudger](#) (1)

[Phillips #00 Screwdriver](#) (1)

Step 1 — LCD Screen



- Weaken the glue that is keeping the screen in place by heating up the edges of the phone with a hair dryer or heat gun.

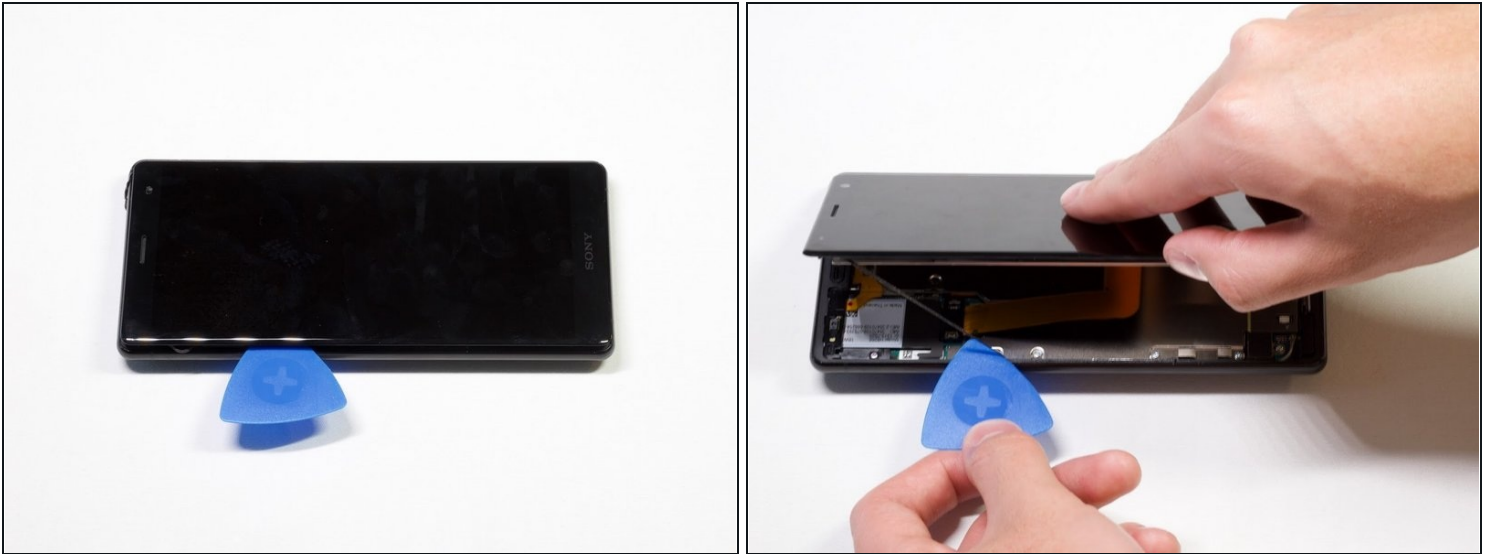
 The phone gets very hot and can hurt the user handling it.

Step 2



- Scrape all the glue from the inside edges by inserting opening picks into the bottom edge of the phone and working your way around the edges.
- ① If the glue hardens and becomes difficult to move the plastic around the edges, reheat the phone.

Step 3



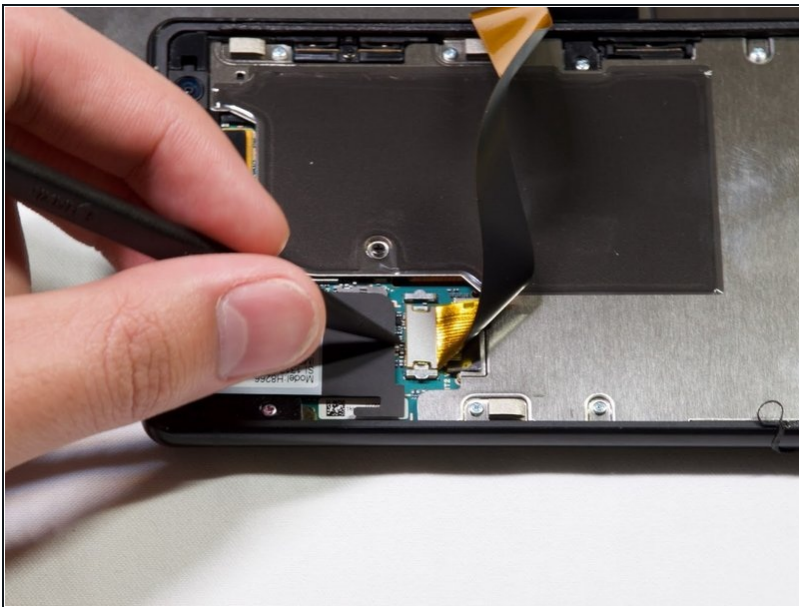
- Pry open the phone by inserting an opening pick under one of the edges and removing the screen.
- ① The screen is still attached by a connector, so do not pull the pieces apart.

Step 4



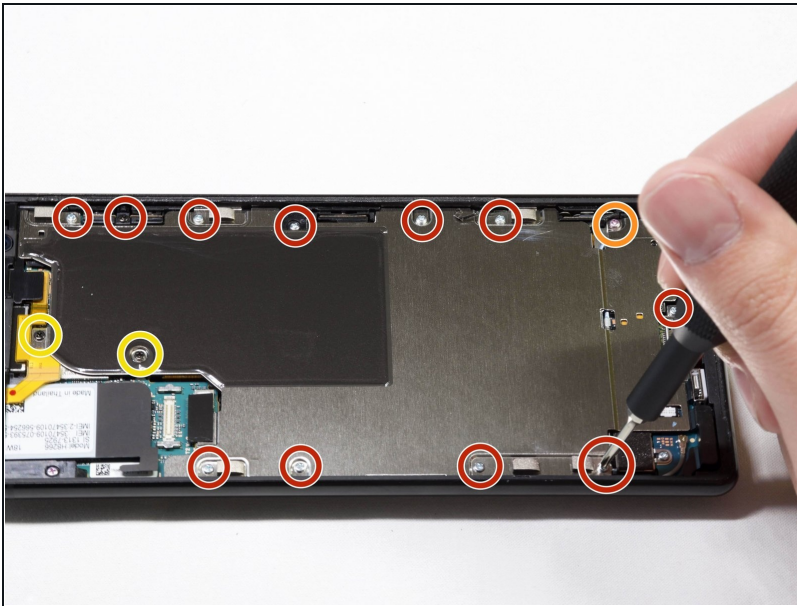
- Remove the bracket covering the connector by grabbing one side of the bracket with angled [tweezers](#) and gently pulling it off.

Step 5



- Gently remove the connector by using a spudger to pop it off.

Step 6 — Battery



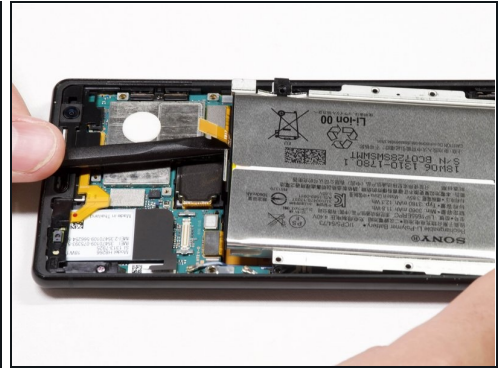
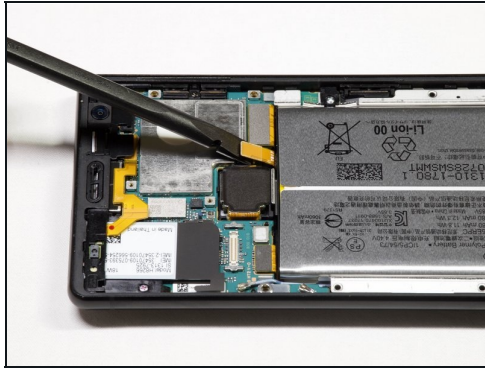
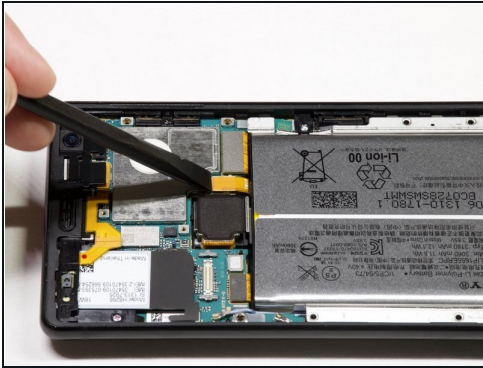
- Take out the twelve 3.5mm screws using the Phillips #00 screwdriver.
- Remove the one 3 mm Phillips #00 screws.
- Remove the two 1mm Phillips #00 screws.
- ⓘ Fifteen screws should be removed in total in this step. (Not all the screws are visible in the picture.)

Step 7



- Lift the metal screen shield out of the phone.

Step 8



- Use the spudger to pry up the battery flex connector to pop the battery out.

Step 9



- Lift the battery out of the phone.

Step 10 — Rear Camera



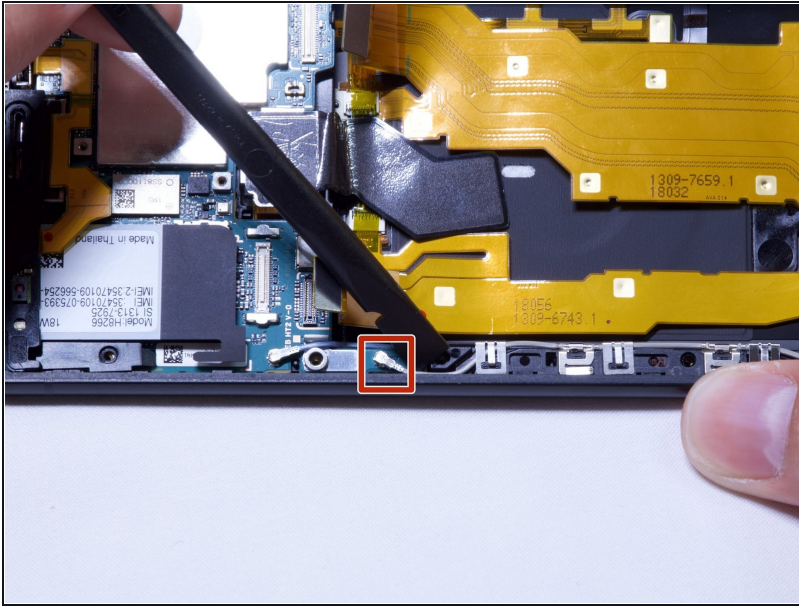
- Pry off the flex connector with a spudger.

Step 11



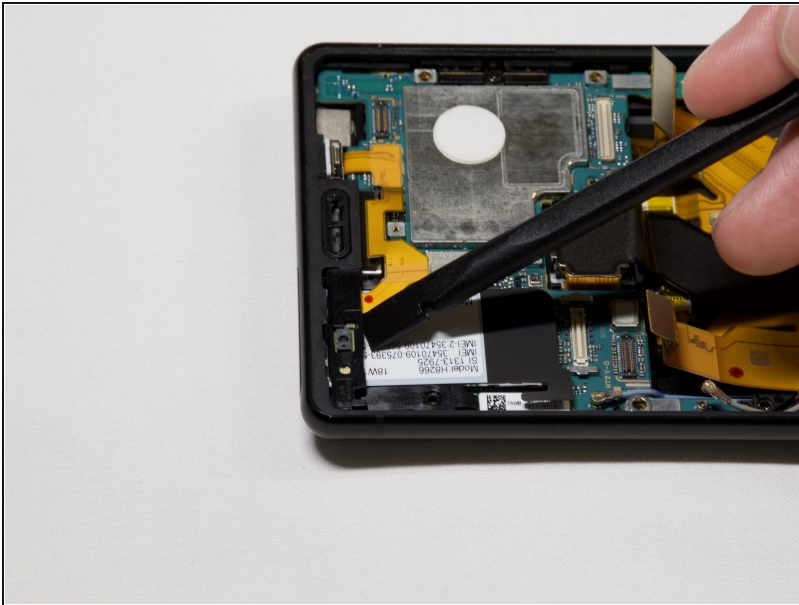
- Take out the one 3mm screw on the motherboard with the Phillips #00 screwdriver.

Step 12



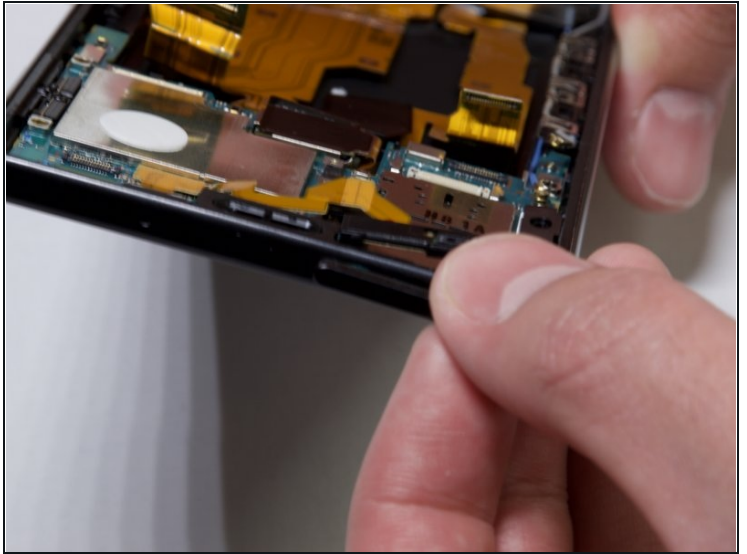
- Using a spudger, remove the antenna connector.

Step 13



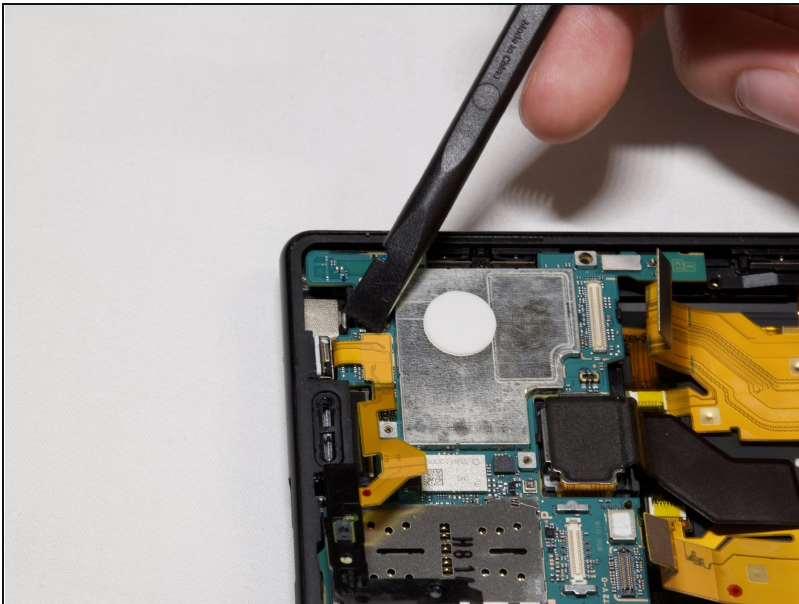
- Gently lift the proximity sensor bracket by using a spudger.

Step 14



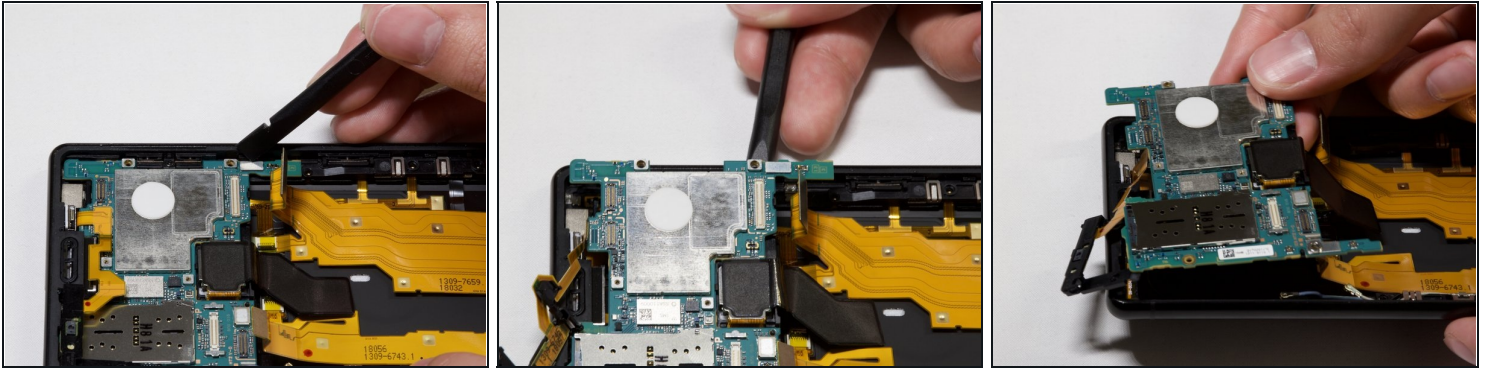
- Remove the SIM card holder.

Step 15



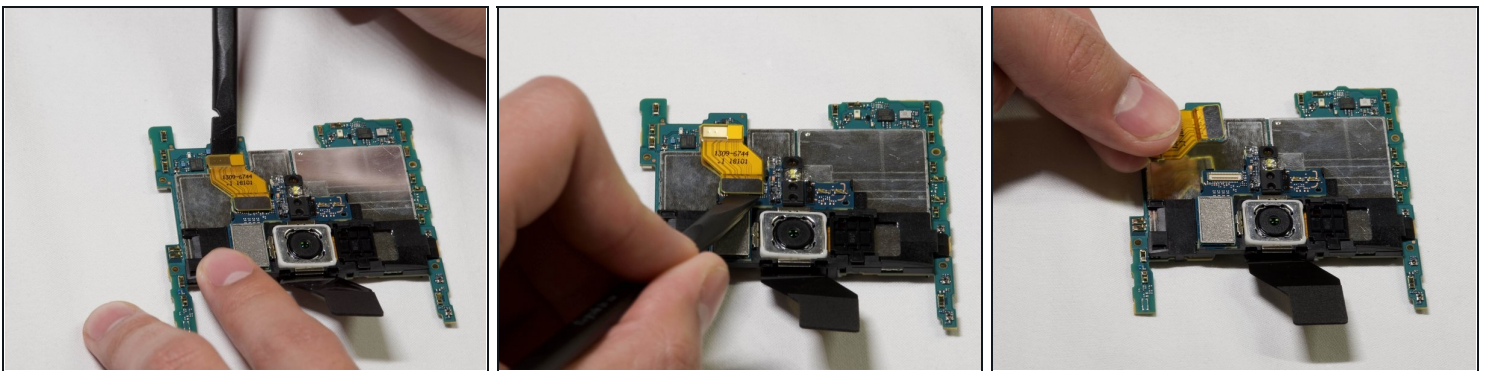
- Pry off the flex connector using the spudger.

Step 16



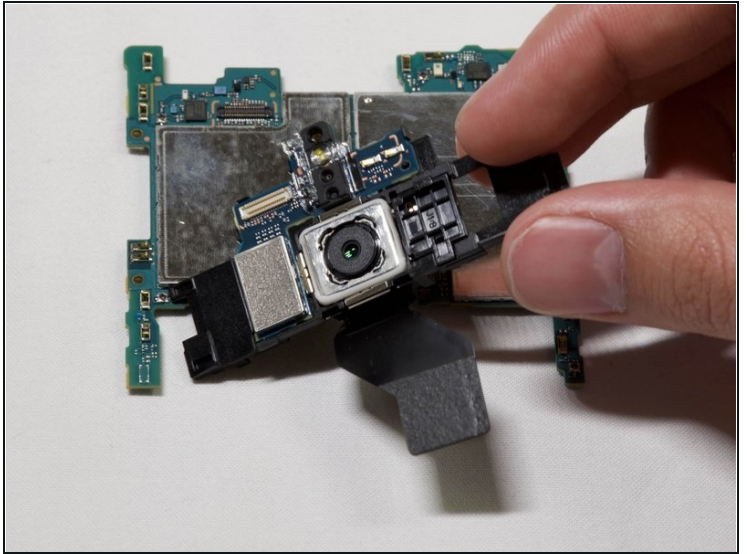
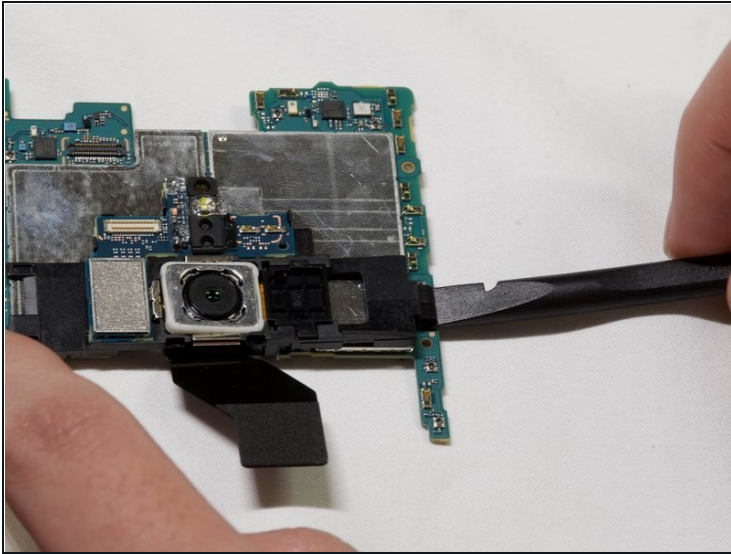
- Use the spudger to lift the motherboard out of the phone.

Step 17



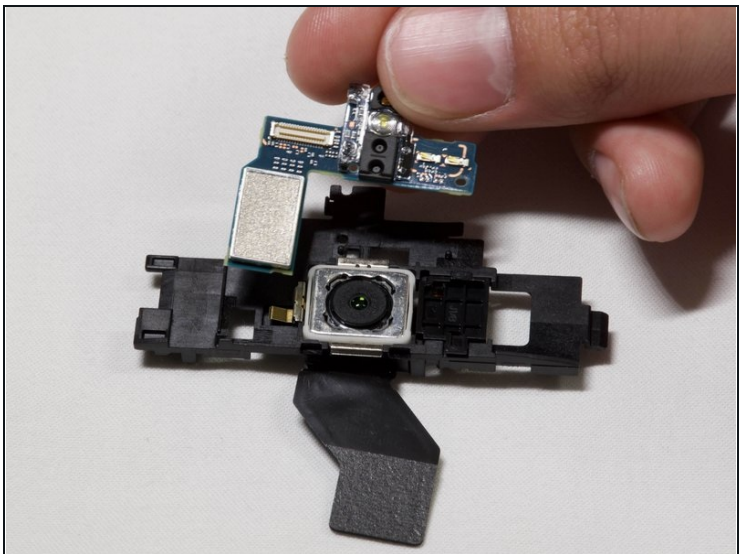
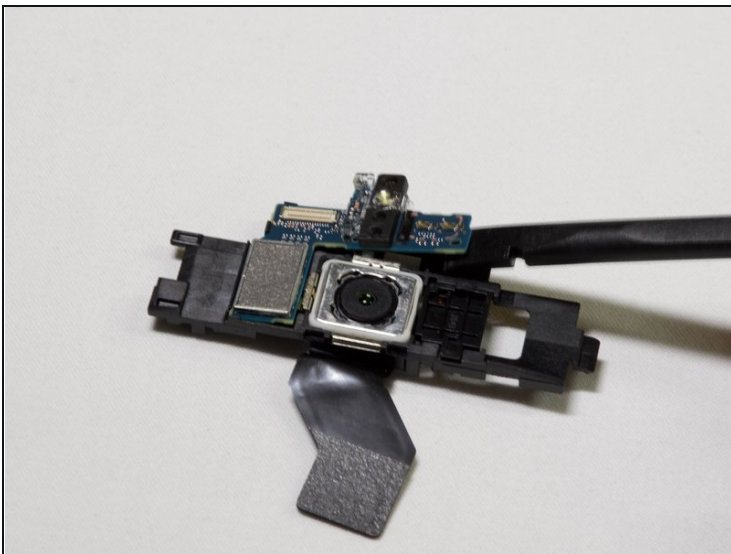
- Disconnect the yellow connector by gently prying both sides of it using a spudger.

Step 18



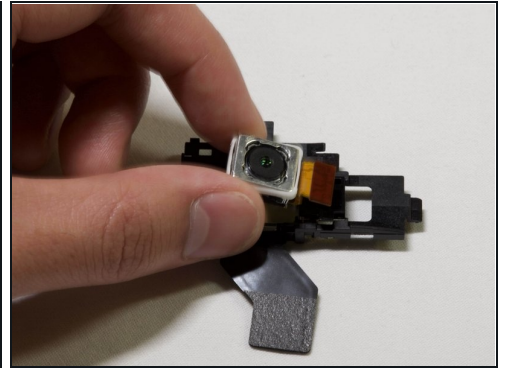
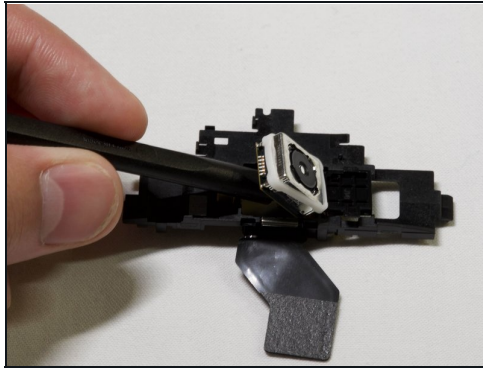
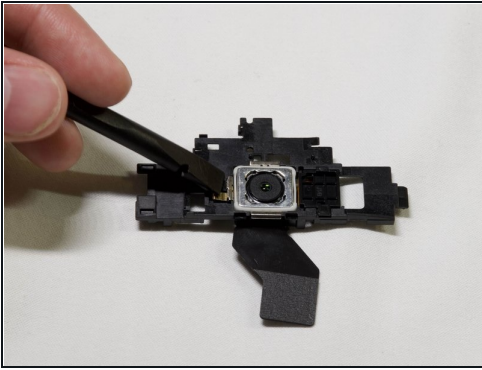
- Disconnect the camera module from the motherboard by pulling the module up from the side using a spudger.

Step 19



- Remove the upper module by gently lifting it with a spudger.

Step 20



- Gently lift up the rear camera by using a spudger under the rear camera.

To reassemble your device, follow these instructions in reverse order.