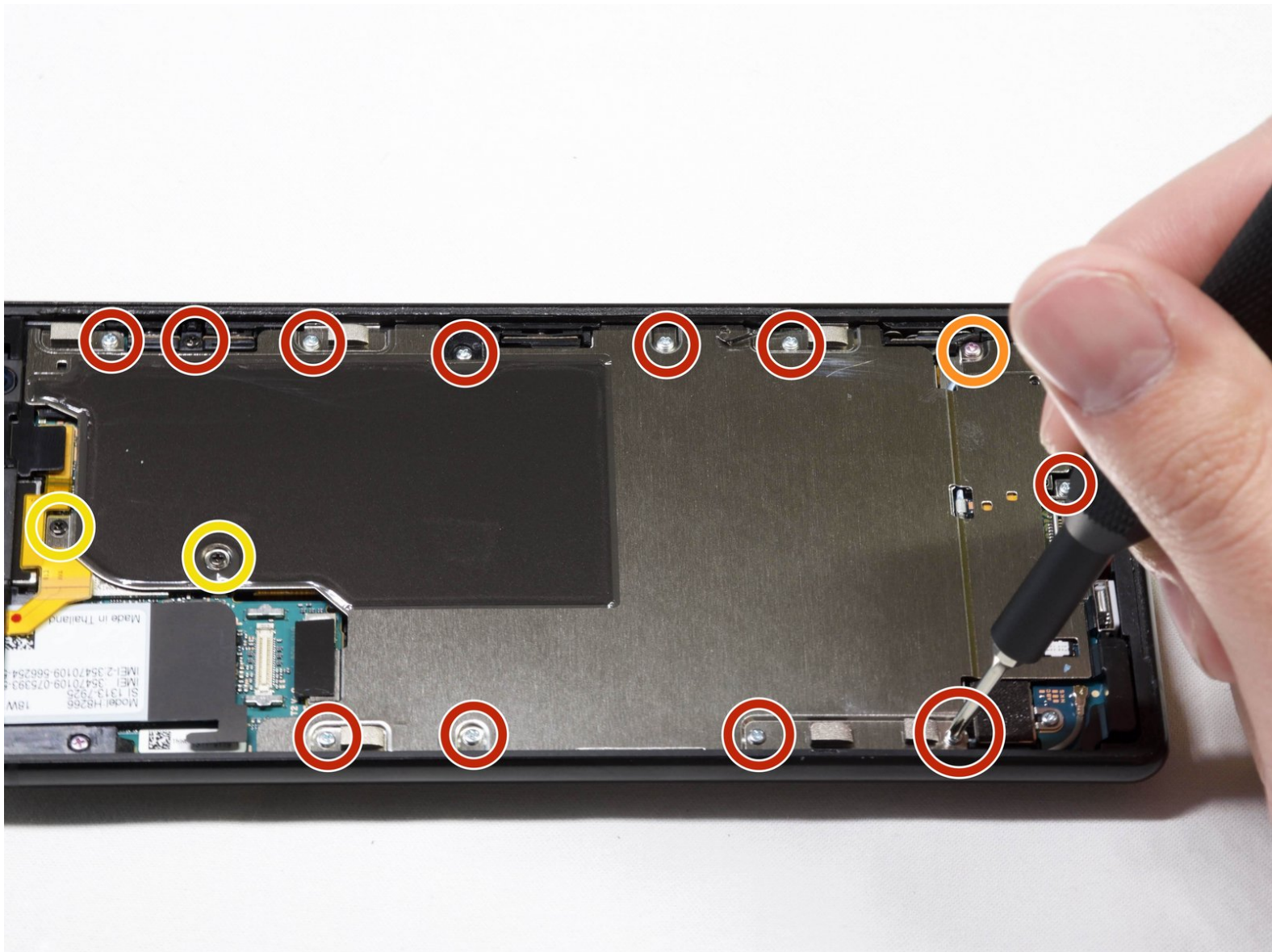




Sony Xperia XZ2 Battery Replacement

This guide will explain how to replace the battery of the Sony Xperia XZ2 model number H6266.

Written By: Arti Jain



INTRODUCTION

If your phone is running slow or loses charge very quickly, your battery might be the reason and it may be time for a replacement. This guide will instruct you on replacing the battery of your Sony Xperia XZ2.

Before removing the battery, you will have to remove the front screen. You will need a spudger and a Phillips #00 screwdriver head.



TOOLS:

- [Hair Dryer](#) (1)
- [iFixit Opening Picks set of 6](#) (1)
- [Tweezers - Pro/ESD/Angled](#) (1)
- [Spudger](#) (1)
- [Phillips #00 Screwdriver](#) (1)



PARTS:

- [1 x Xperia XZ2 replacement battery](#) (1)

Step 1 — LCD Screen




- Weaken the glue that is keeping the screen in place by heating up the edges of the phone with a hair dryer or heat gun.

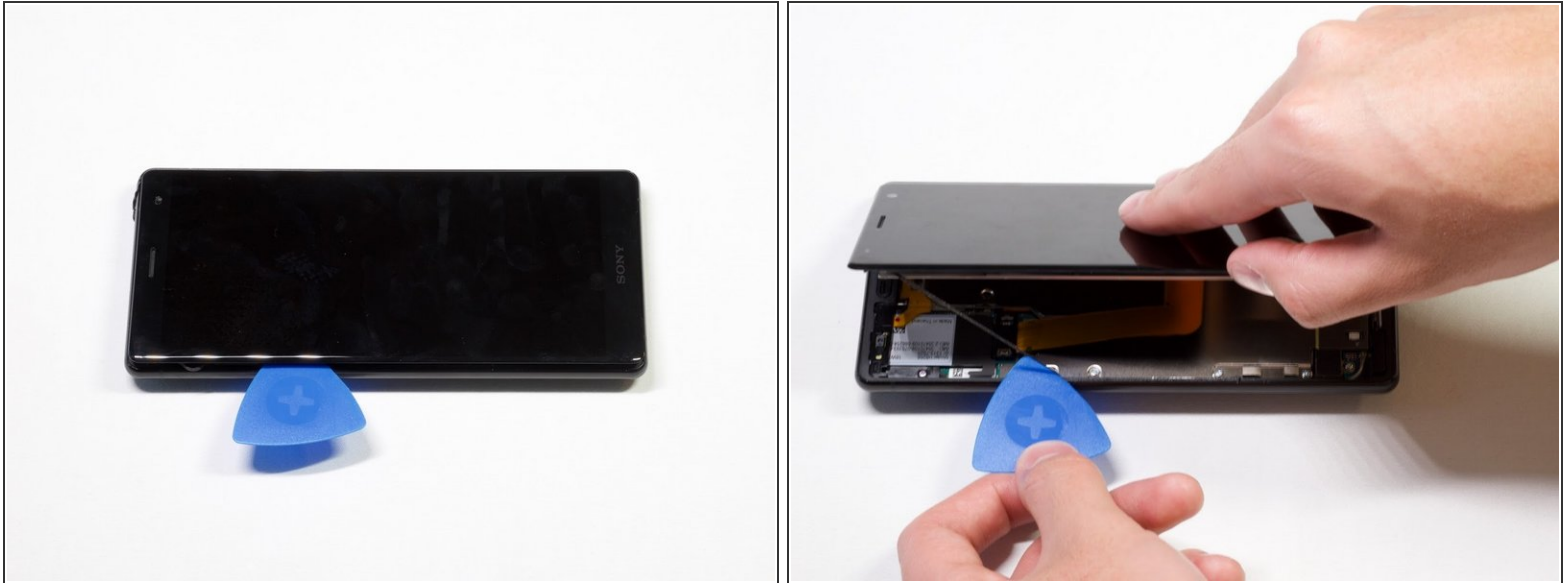
 The phone gets very hot and can hurt the user handling it.

Step 2



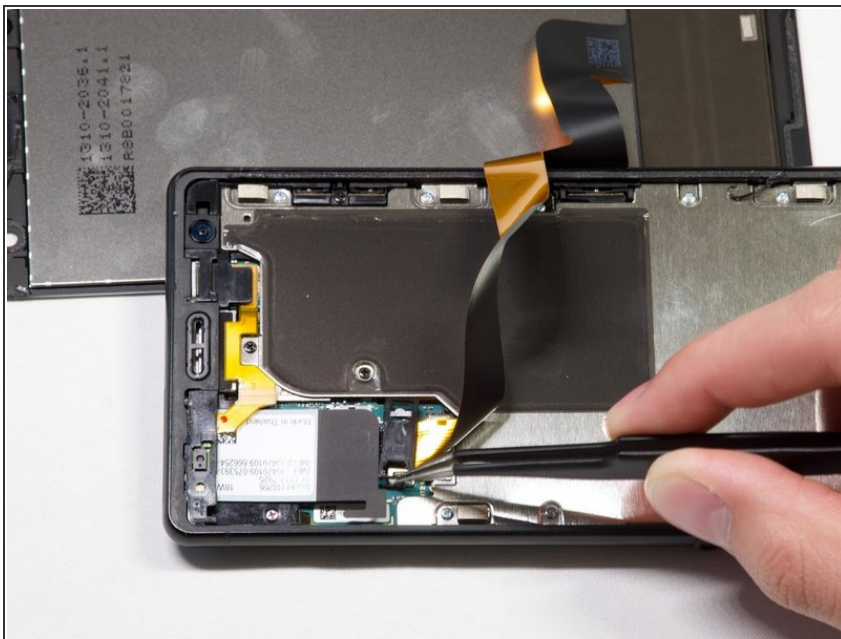
- Scrape all the glue from the inside edges by inserting opening picks into the bottom edge of the phone and working your way around the edges.
-  If the glue hardens and becomes difficult to move the plastic around the edges, reheat the phone.

Step 3



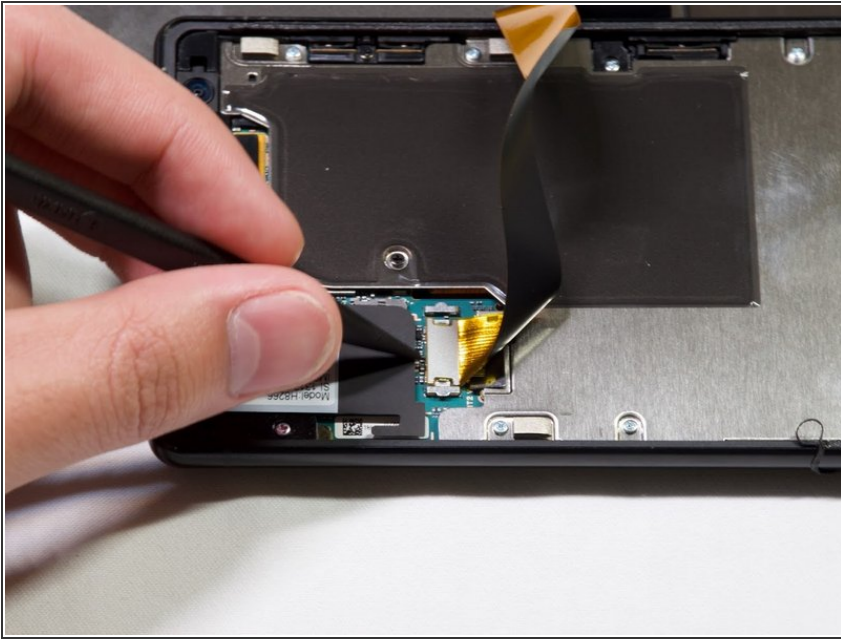
- Pry open the phone by inserting an opening pick under one of the edges and removing the screen.
- ⓘ The screen is still attached by a connector, so do not pull the pieces apart.

Step 4



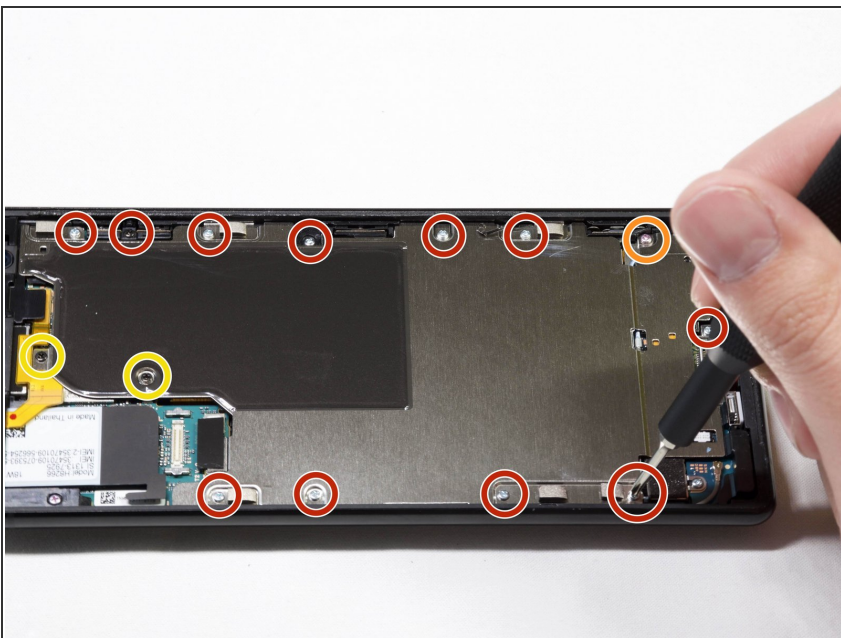
- Remove the bracket covering the connector by grabbing one side of the bracket with angled tweezers and gently pulling it off.

Step 5



- Gently remove the connector by using a spudger to pop it off.

Step 6 — Battery



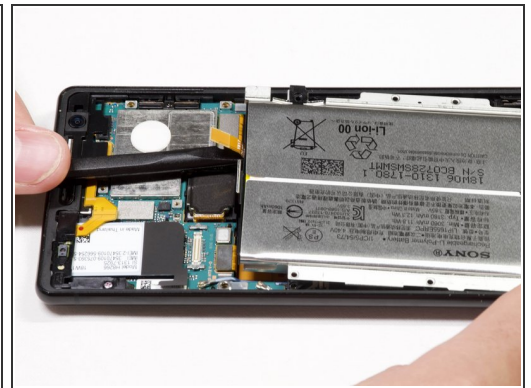
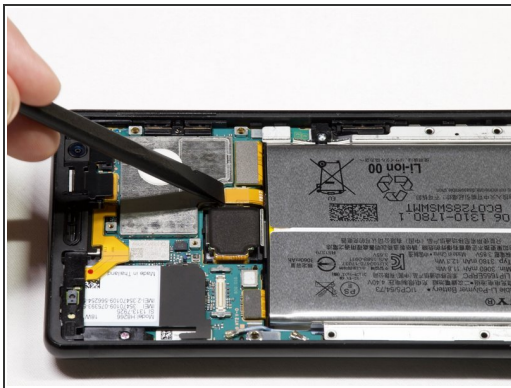
- Take out the twelve 3.5mm screws using the Phillips #00 screwdriver.
- Remove the one 3 mm Phillips #00 screws.
- Remove the two 1mm Phillips #00 screws.
- ⓘ Fifteen screws should be removed in total in this step. (Not all the screws are visible in the picture.)

Step 7



- Lift the metal screen shield out of the phone.

Step 8



- Use the spudger to pry up the battery flex connector to pop the battery out.

Step 9



- Lift the battery out of the phone.

To reassemble your device, follow these instructions in reverse order.