



Hisense Chromebook C11 Battery Replacement

If your Chromebook C11 battery is not holding...

Written By: Alexander Burrell



INTRODUCTION

If your Chromebook C11 battery is not holding its charge, dies too quickly, or doesn't charge at all this is a sign to replace the battery. Replacing the battery on your Chromebook C11 is a simple process, and is a great way to make it run like new again. If the battery has swollen you can follow this [link](#) for more information.

A good safety tip is to make sure you have a [static discharge](#) while working with the computer and its components, also be sure to shutdown and make sure the laptop has no power before starting this process.

There are no special skills needed to replace the battery, As long as the user knows how to use a screwdriver and tweezers. Replacing the battery will help your Chromebook C11 run more efficiently. This guide demonstrates how to properly remove and replace the battery on a Hisense Chromebook C11.



TOOLS:

[iFixit Opening Tool](#) (1)

[Phillips #00 Screwdriver](#) (1)

[Phillips #000 Screwdriver](#) (1)

[Tweezers](#) (1)

Step 1 — Back Panel



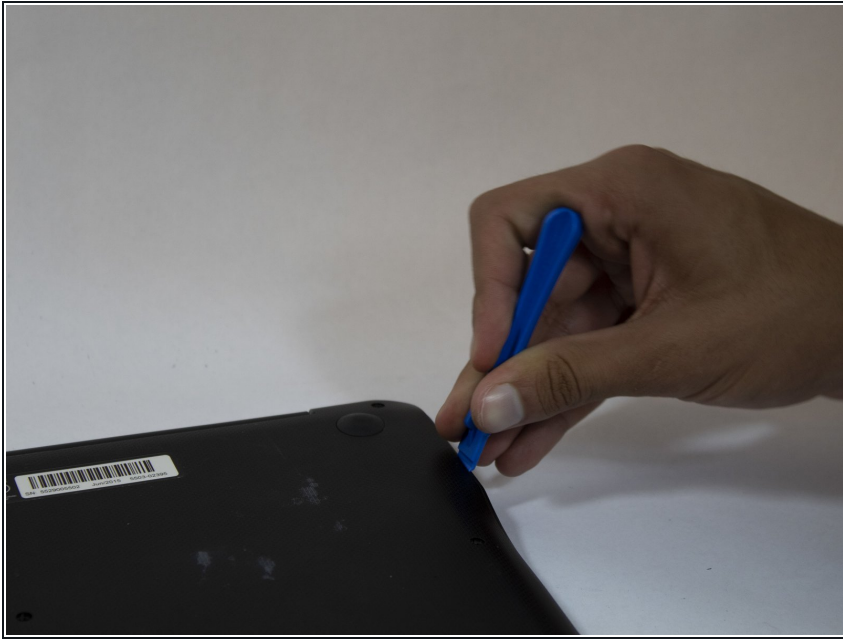
- Remove the front two hub caps.
- When finished, you should be able to remove the back cover.

Step 2



- Unscrew the screws with the Phillips #00 screwdriver.

Step 3



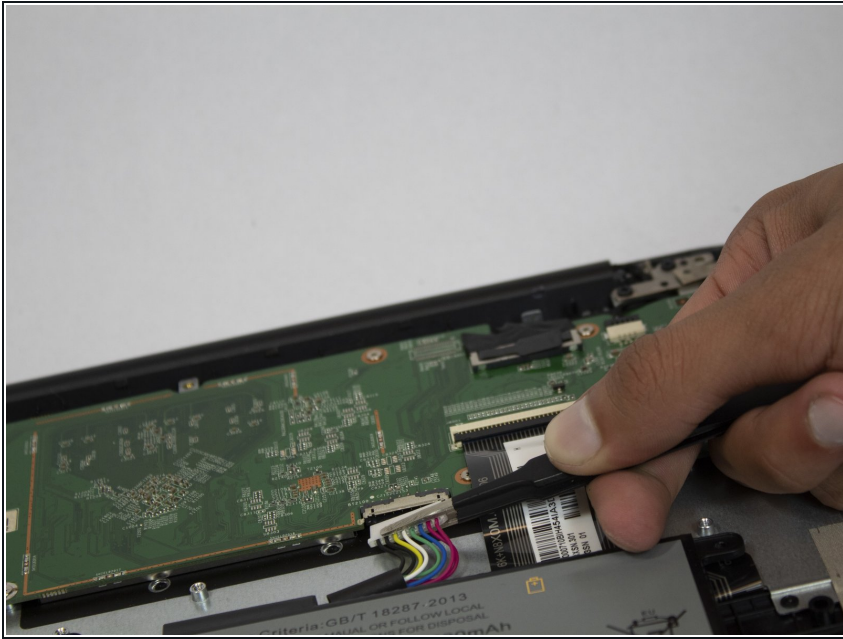
- Pry the perimeter of the case open with the plastic opening tool.
- Remove the back panel.

Step 4 — Battery



- ⚠ Be careful not to puncture the battery with the screwdriver or any sharp instrument.
- Unscrew the screws with the Phillips #000 screwdriver.

Step 5



- Use the tweezers to unplug the battery.

Step 6



- Remove the battery.

To reassemble your device, follow these instructions in reverse order.