



Battery Replacement for the Kindle 4

Replacement of the battery for the Kindle 4.

Written By: Sigi Gruber



INTRODUCTION

This will show how to replace the battery in case it doe no longer hold a charge or as other power issues



TOOLS:

- [New Item](#) (1)
- [New Item](#) (2)
- [New Item](#) (2)
- [Tweezers](#) (1)
- [New Item](#) (1)
- [New Item](#) (1)
- [New Item](#) (1)



PARTS:

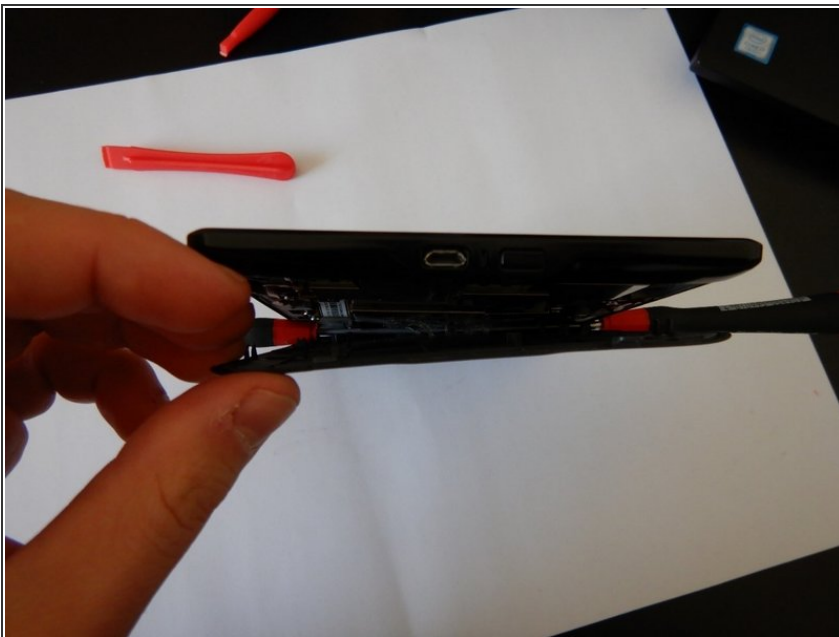
- [New Item](#) (1)

Step 1 — Opening the case



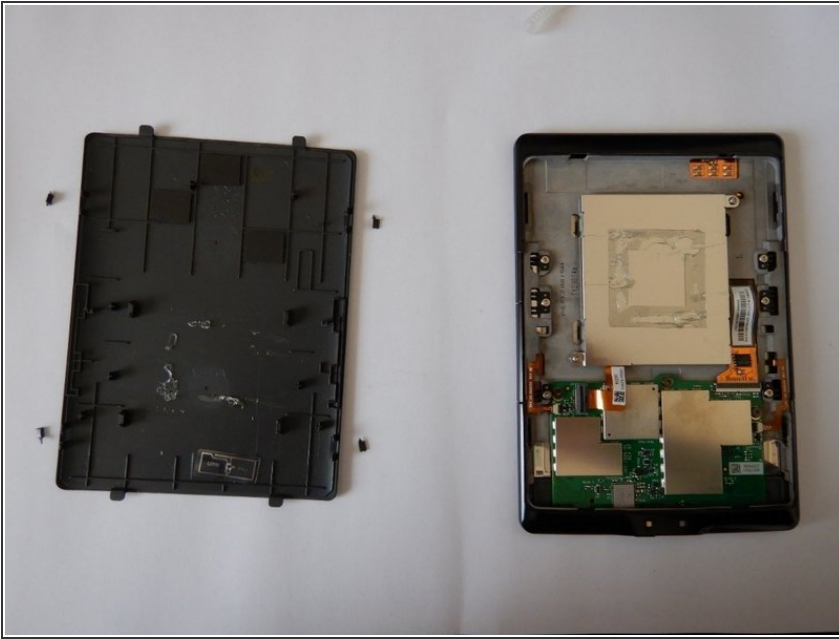
- Use plastic opening tools to pry open the case starting on the long side. The cover has a total of 8 clips, 4 of which (located on the long sides) are designed so they will be damaged when the device is opened.

Step 2 — Loosening the adhesive



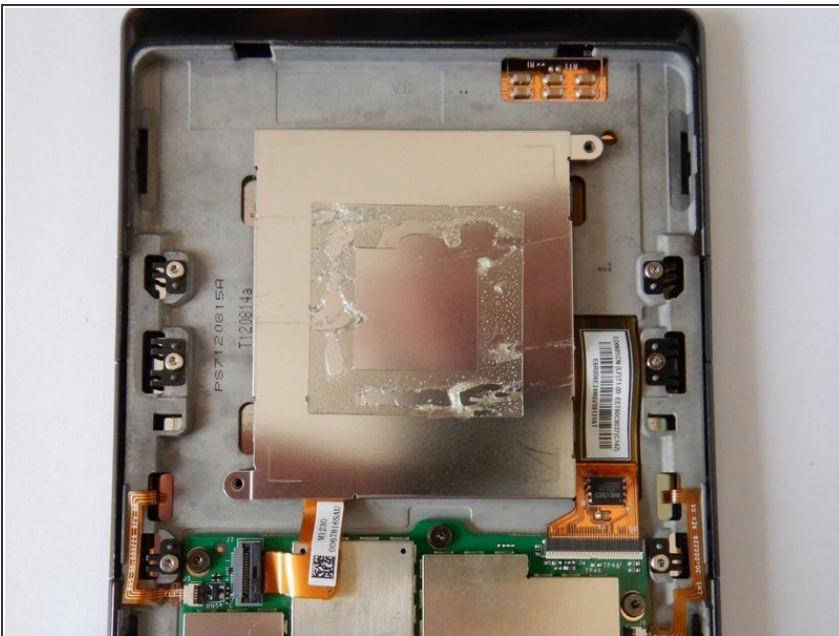
- After prying open 3 sides of the cover, it is still attached to the aluminium cover by double-sided adhesive tape. Use a screwdriver to create a small gap and use the scalpel to cut the adhesive. Alternatively you can loosen the adhesive with a heat gun.

Step 3 — Remove the case cover



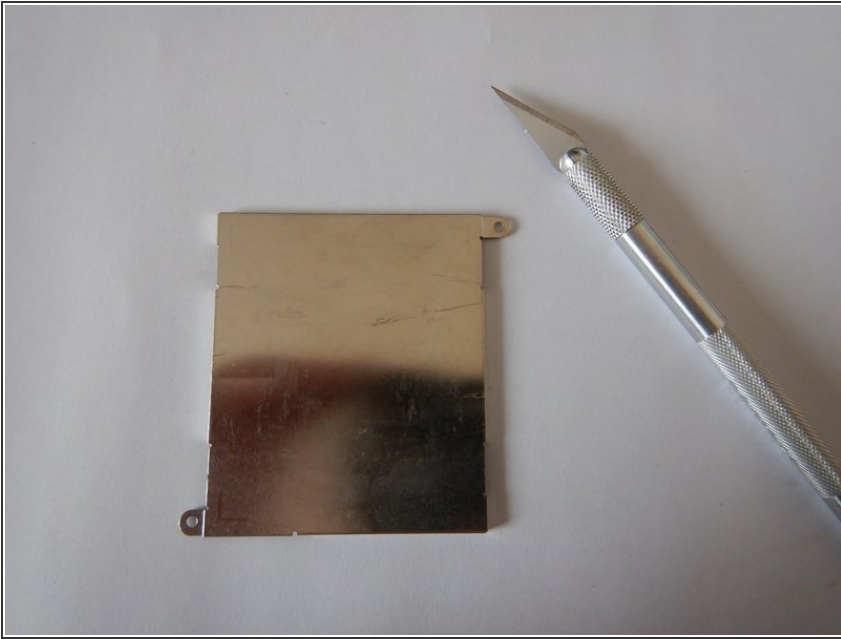
- After loosening the adhesive, the case cover can be easily removed.

Step 4 — Remove the battery cover



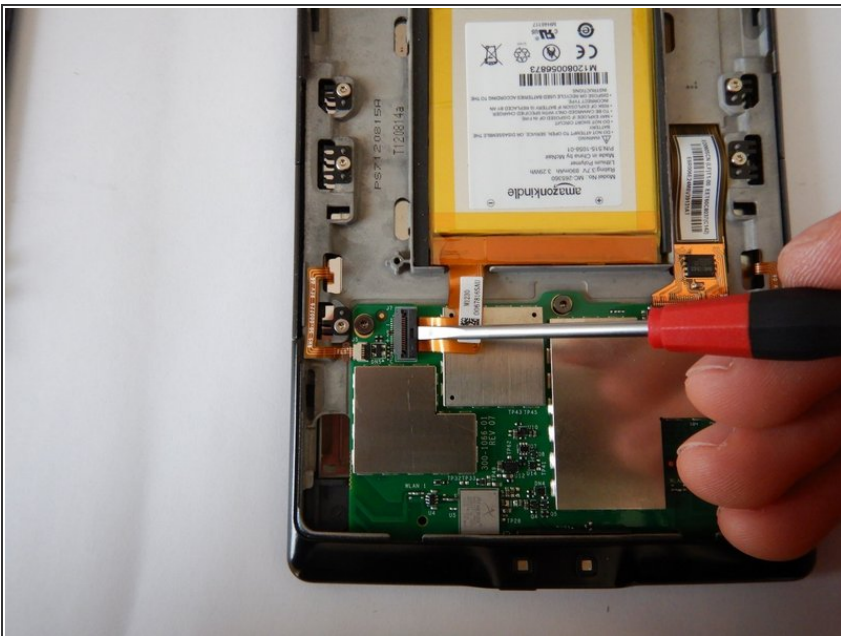
- Remove the two TX5 screws from the battery cover.

Step 5 — Remove any adhesive residue



- Remove any adhesive residue from the battery cover and the housing cover with a scalpel / rubbing alcohol.

Step 6 — Disconnect the battery



- Then carefully disconnect the battery flex cable, ensuring that the contacts are not being short-circuited.

Step 7 — Remove the battery



- The battery is adhered to the housing, it takes some force to remove it. Avoid puncturing of the battery as it could catch fire and/or explode! Dispose of the old battery properly.

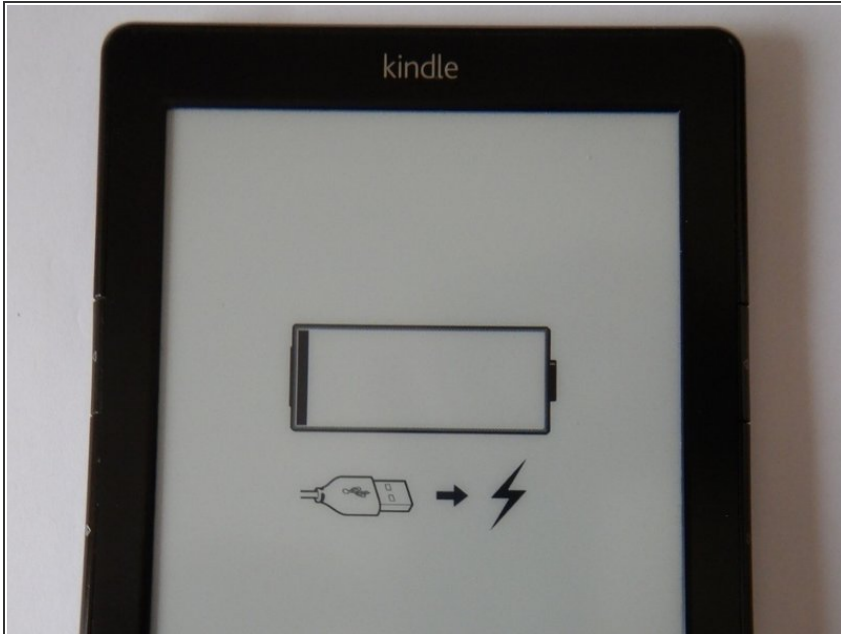
Step 8 — Insert new battery



- The new battery can be fastened through the remaining adhesive residue. Reconnect the flex cable of

the new battery, making sure that the contacts are not short-circuited.

Step 9 — Control function



- The display should indicate a empty battery.
- Before further assembly, the battery should be fully charged and it should be checked whether the device terminates the charging process when the battery is fully charged. If this is not the case, the new battery could be destroyed by the device.
- Monitor the initial charge and carry it out in a place where there are no flammable objects.

Step 10 — Secure the battery cover



- Secure the battery cover with the two TX 5 screws. Ensure a good fit of the back cover with a few strips of double-sided tape. Limit the amount of tape so as not to hinder future disassembly.

Step 11 — Finish the reassembly



- The rear cover will still fit well and tight despite the four missing fastenings.

To reassemble your device, follow these instructions in reverse order.