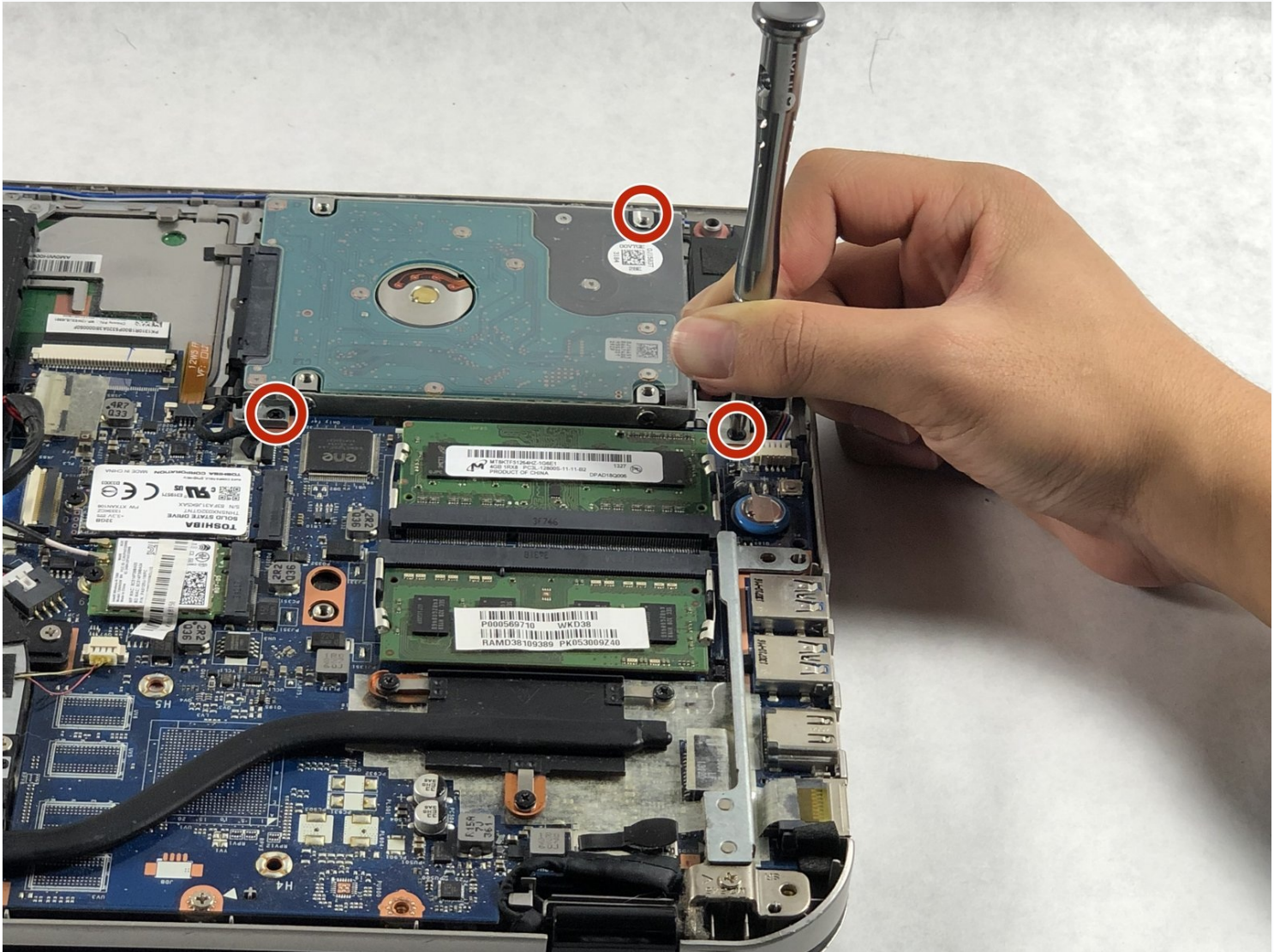




# Toshiba Satellite E45T-A4300 Hard Drive Replacement

The hard drive is what stores all the memories...

Written By: James Nguyen



# INTRODUCTION

The hard drive is what stores all the memories of the laptop. If the hard drive is damaged, then the laptop won't 'remember' how to be a laptop anymore. A replacement in the hard drive will be needed to bring back the laptop to life.

## TOOLS:

Phillips #1 Screwdriver (1)

Spudger (1)

## Step 1 — Back Panel



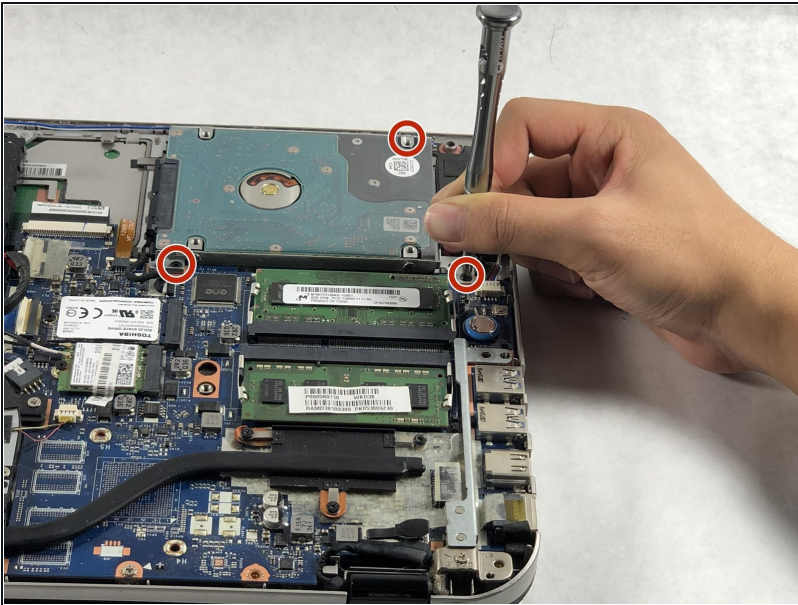
- Remove the twelve 5 mm Phillips #1 screws from the back panel.

## Step 2



- Pry the back panel open with the plastic spudger or fingernails.
- ① Pry it gently so that the back panel does not crack.

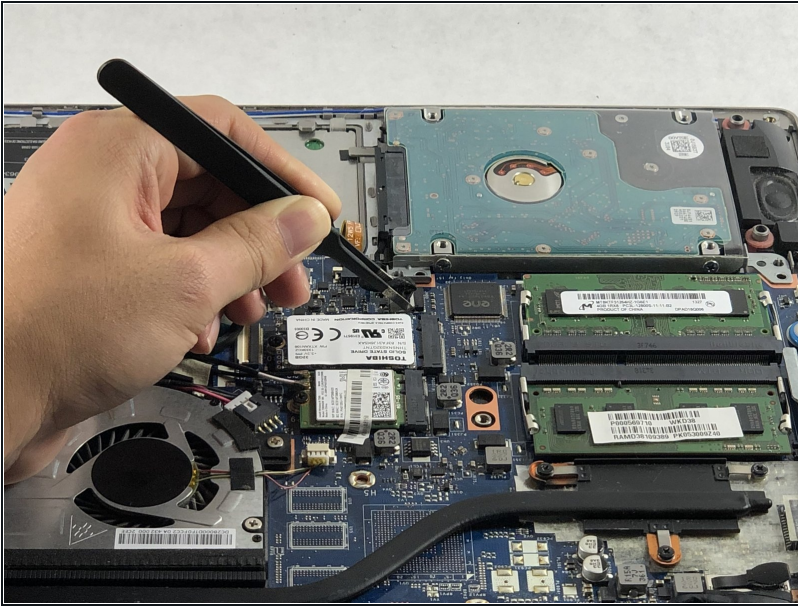
## Step 3 — Hard Drive



- Remove the three 7mm black screws using the Phillips #1 screwdriver.

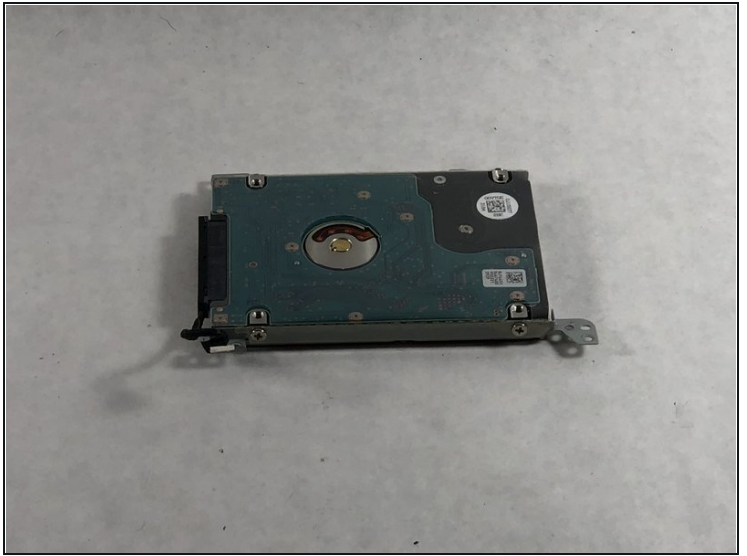
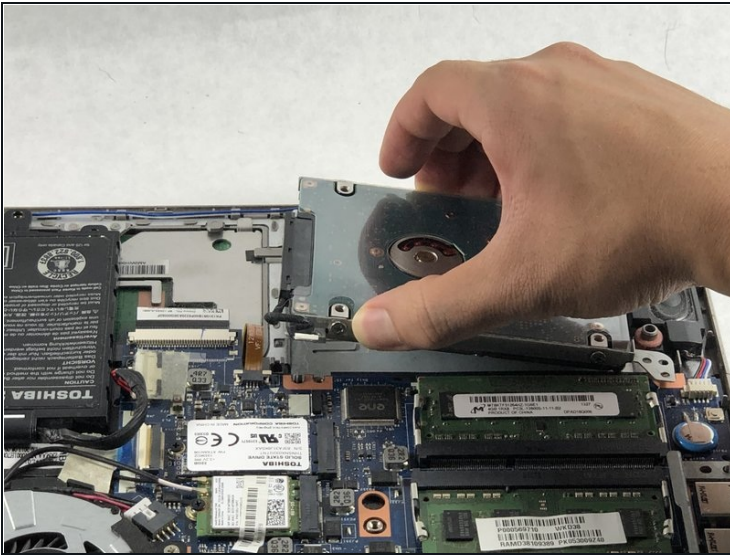


## Step 4



- Remove the hard drive's connection port with grooved [tweezers](#).

## Step 5



- Pull the hard drive out of the hook and remove it from the device.

To reassemble your device, follow these instructions in reverse order.