



Kyocera Echo Camera Replacement

How to replace the camera in a Kyocera Echo.

Written By: Alex Kinstedt



INTRODUCTION

Use this guide if you need to replace the camera in your Kyocera Echo smartphone. This guide should be taken slowly, as the general circuit board is glued to the screen. Removing this with the opening tool is easy to do without destroying it, as long as the user is careful.

TOOLS:

- [iFixit Opening Tools](#) (1)
 - [Phillips #000 Screwdriver](#) (1)
 - [Tri-point Y000 Screwdriver](#) (1)
-

Step 1 — Battery



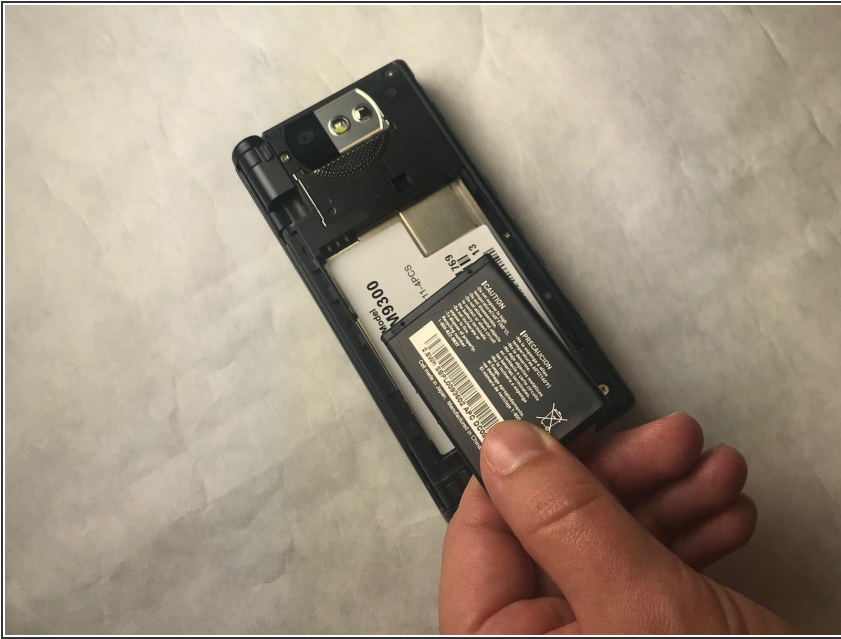
- Orient the phone so that the screen is face down.
- Place one or both thumbs near the small arrow at the bottom of the phone and firmly push the cover up.

Step 2



- Pull up on the back cover and lift the top to separate it from the phone.

Step 3



- Pull the battery out of the device with a thin object such as your nail or credit card.

Step 4 — Camera



- Unscrew four 4.3mm Phillips #000 screws.

Step 5




- Unscrew two 4.8mm Y000 screws.

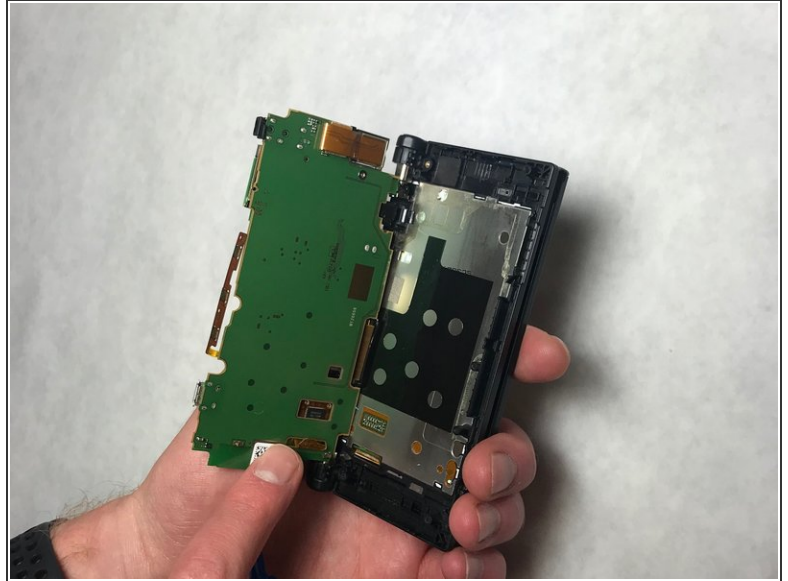
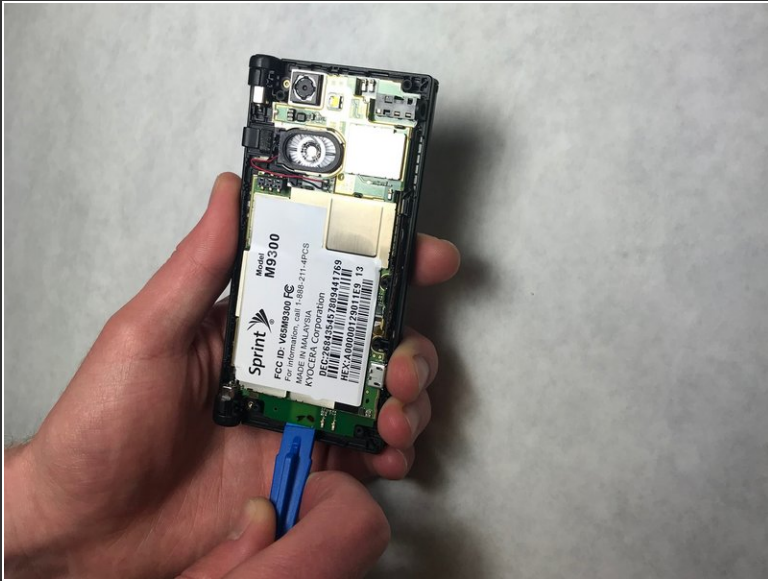
Step 6



- Wedge a plastic opening tool under the black outer casing of the phone. Push the plastic opening tool down and outward while rotating the phone to pry the black outer casing off.

 Do not apply too much pressure to the outer casing, as it could damage internal components.

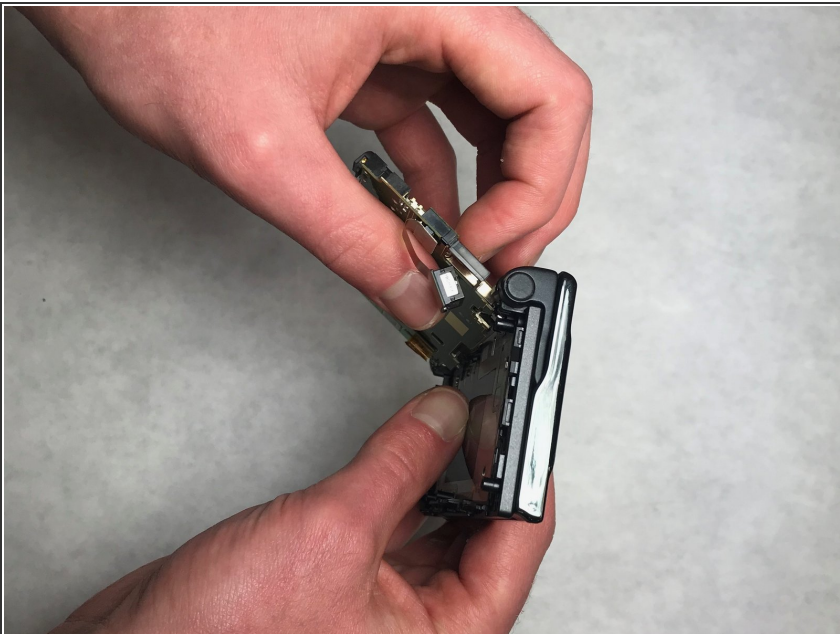
Step 7



- Wedge a plastic opening tool under the bottom of the circuit board and push upward to separate the circuit board from the back of the phone.

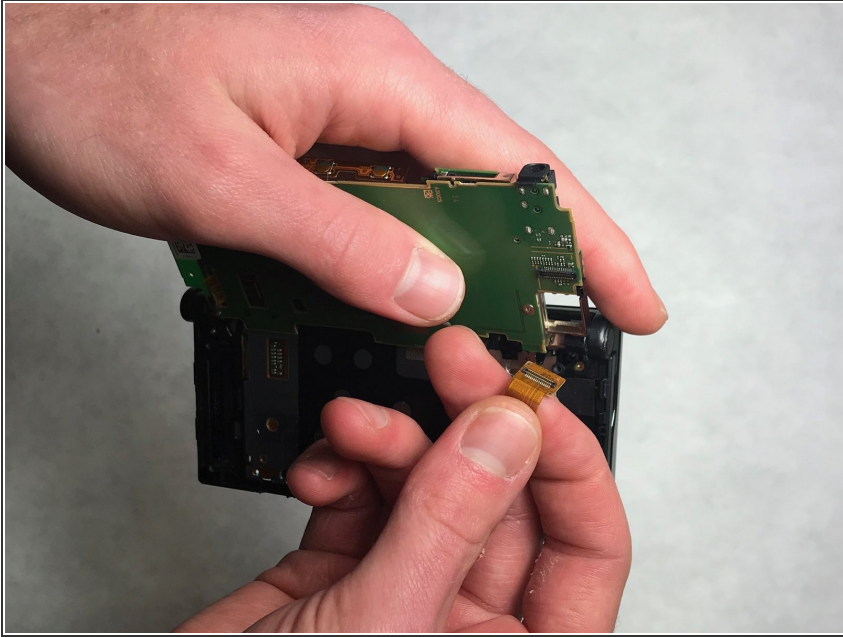
⚠ Be careful to not break the circuit board as it is connected to the hinge.

Step 8



- Push the camera gently out of its housing towards the side of the circuit board it is connected at to dislodge it.

Step 9



- Grasp and pull up on the 32 pin connector attached to the circuit board to remove the camera.

To reassemble your device, follow these instructions in reverse order.