



OLPC XO-1.5 Screen Replacement

This guide will show you how to access the...

Written By: Andrew Ferrell



INTRODUCTION

This guide will show you how to access the screen on your OLPC XO 1.5.



TOOLS:

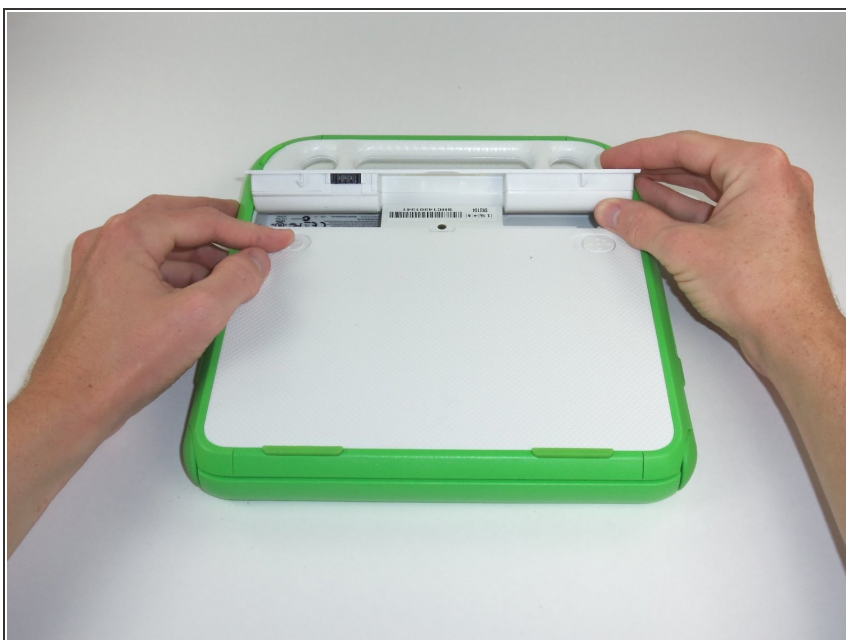
- [Phillips #0 Screwdriver](#) (1)
-

Step 1 — Battery



- Place the laptop upside down with the handle away from you.

Step 2



- Slide the tabs out, towards the green edges, to show the open lock symbol.
- ⓘ The right tab will stay in place, but the left tab must be held in position while you remove the battery.

Step 3



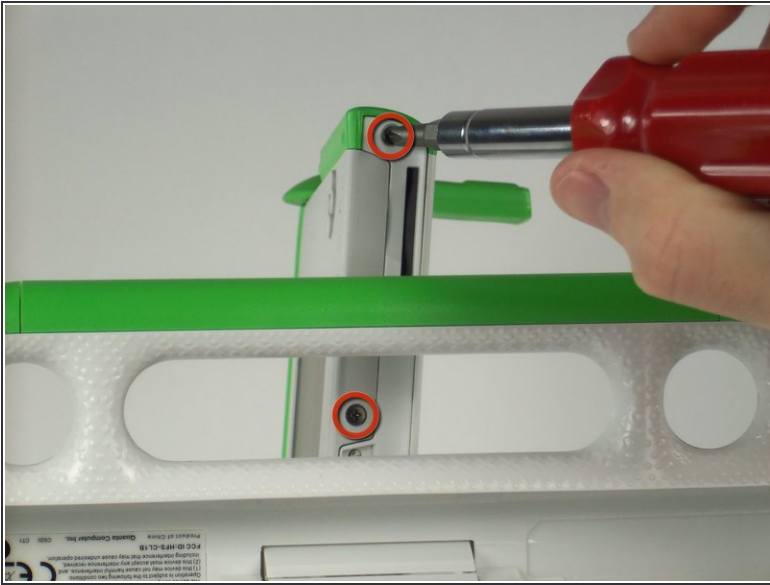
- Lift the middle of the battery to remove it.

Step 4 — Screen



- Turn the laptop so it is resting on its bottom.
- Open the laptop by rotating the green wings on the side up, then lifting the top half of the laptop.
- Rotate the top half of the laptop about 90 degrees.

Step 5



- Turn the laptop upside down, so you can see the screws on the bottom of the top half.
- Remove the two 4mm screws with a Phillips #1 screwdriver.
- Rotate the top half 180 degrees.
- Remove the two 4mm screws with a Phillips #1 screwdriver.

Step 6



- Rotate the top of the laptop 90 degrees, so that it is facing you again.
- Slide the green pieces off the device. They should come off easily.

Step 7



- Pull down on the white screen cover. It does not require much force.
 - Remove the screen cover.
- i** The game pad on the left sometimes falls during this step.

Step 8



- Unscrew the four 7.62mm Phillips #1 screws on either side of the screen.

⚠ The screen is still connected by ribbon cables. You can damage the cables if you remove the screen before disconnecting the cables.

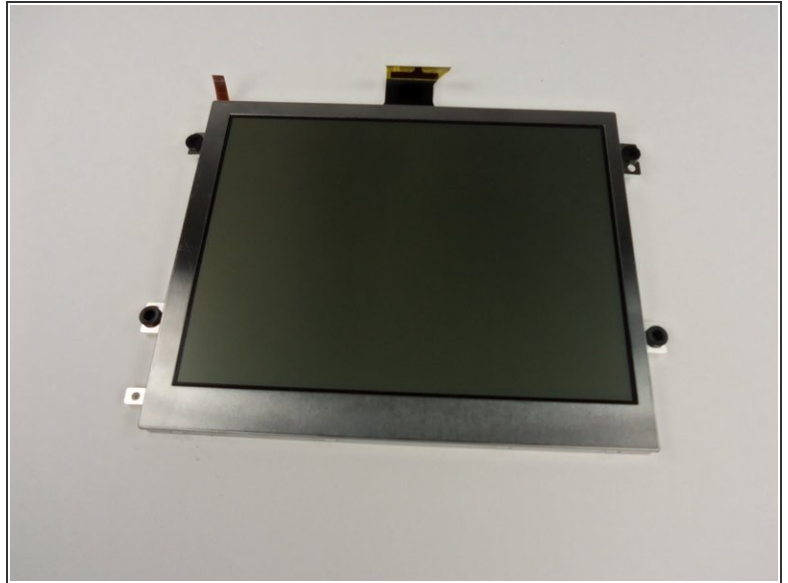
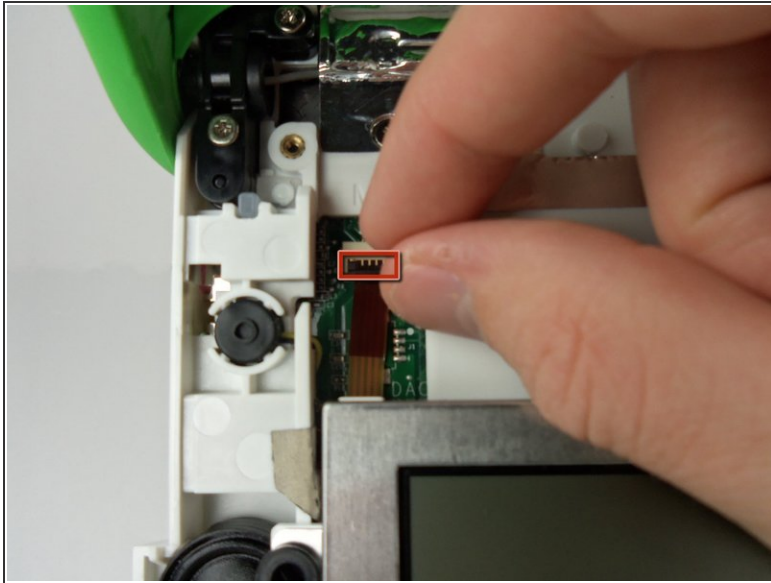
- Move the screen down a little to expose the ribbon cables.

Step 9



- Flip up the tab right under the middle top of the screen.
- Pull the black ribbon cable out of the socket.

Step 10



- Flip up the smaller tab under the left side of the screen.
- Remove the small cable to separate the screen from the rest of the laptop.
- Gently remove the screen.

To reassemble your device, follow these instructions in reverse order.