



# Toshiba Satellite E45t-A4300 Battery Replacement

The battery is what keeps the laptop powered...

Written By: Jose Marques



## INTRODUCTION

The battery is what keeps the laptop powered on. If the battery is damaged in any way, the laptop will either stay power on for an uncomfortably short duration or the laptop will not power on anymore. If you suspect that the battery is damaged or that the battery is too old (more than a year or two), then this is the guide that will assist in illustrating the replacement of the battery.



### TOOLS:

- [Phillips #1 Screwdriver](#) (1)
- [Spudger](#) (1)



### PARTS:

- [Toshiba PA5157U-1BRS Laptop Battery](#) (1)

## Step 1 — Back Panel



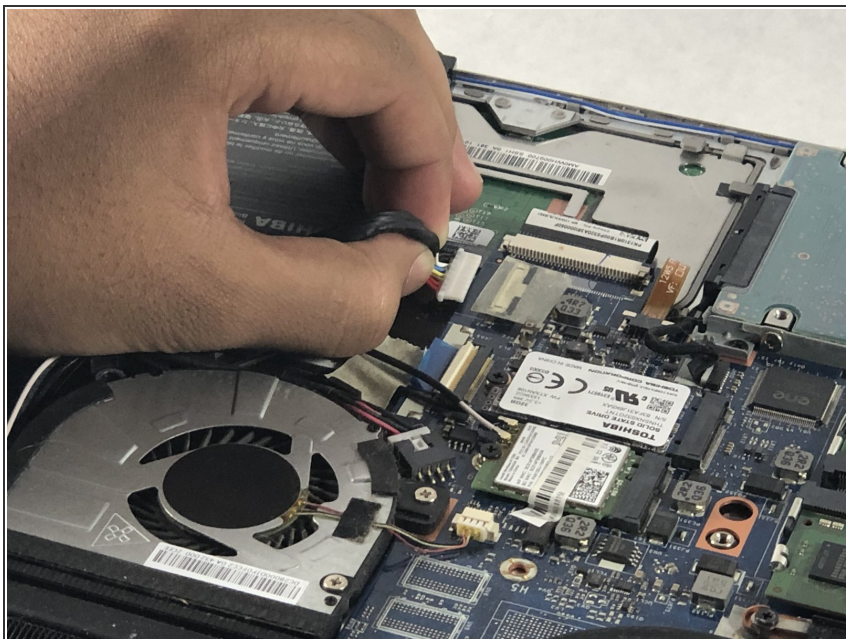
- Remove the twelve 5 mm Phillips #1 screws from the back panel.

## Step 2



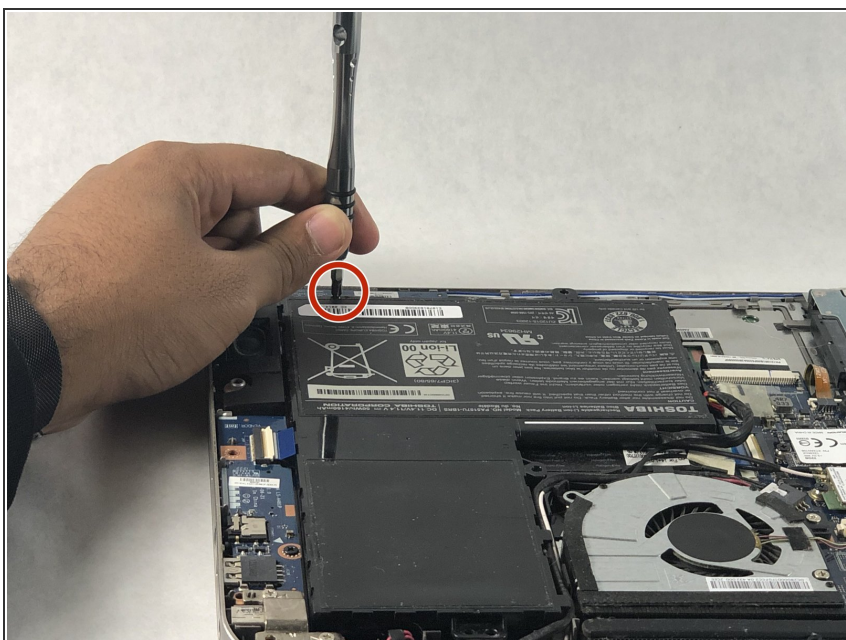
- Pry the back panel open with the plastic spudger or fingernails.
  - ⓘ Pry it gently so that the back panel does not crack.

## Step 3 — Battery



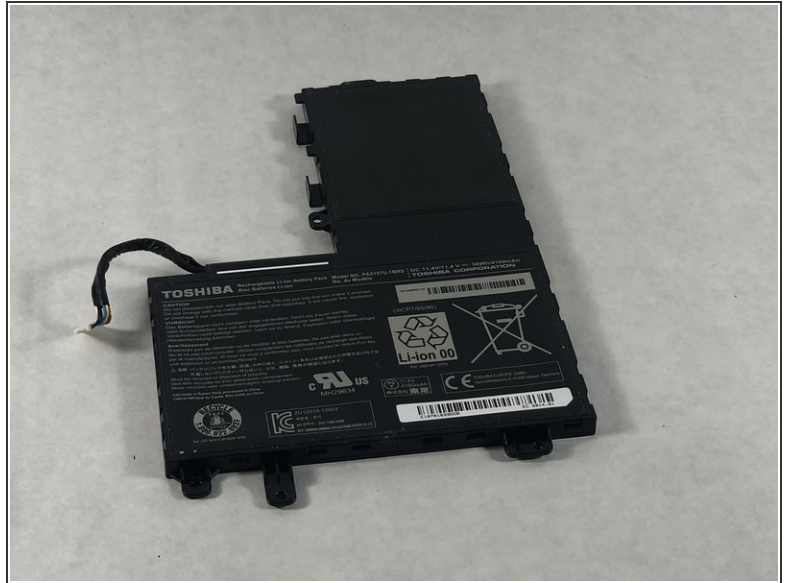
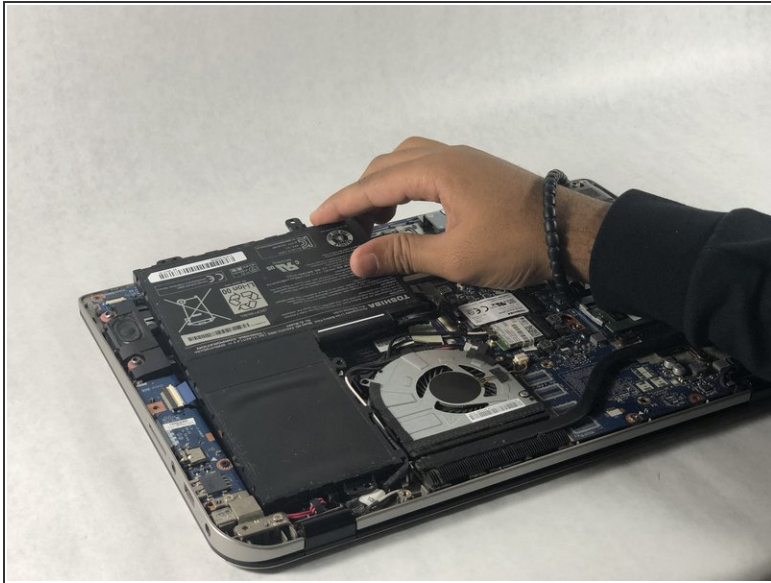
- Disconnect the battery connector from the motherboard.

## Step 4



- Remove the single screw Phillips #1 screw near the battery.

## Step 5



- Remove the battery from the laptop.

To reassemble your device, follow these instructions in reverse order.