



# Tascam Portastudio 05 Broken Play Switch

When your ON/OFF switch fails, follow this...

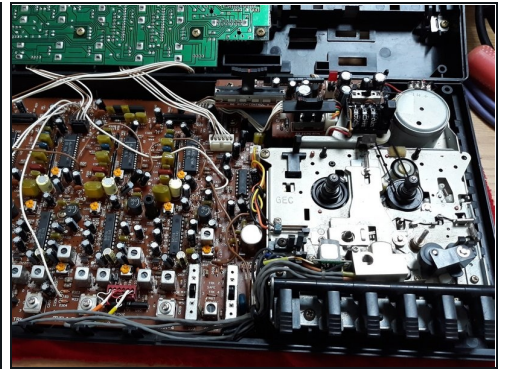
Written By: Cafony



# INTRODUCTION

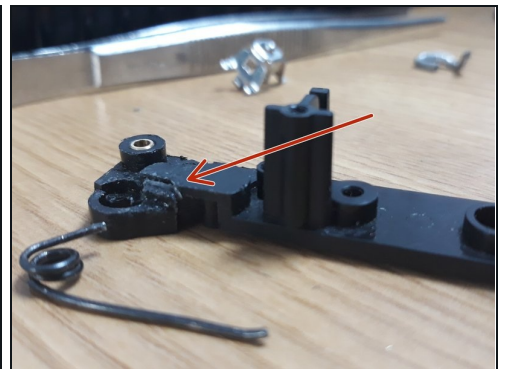
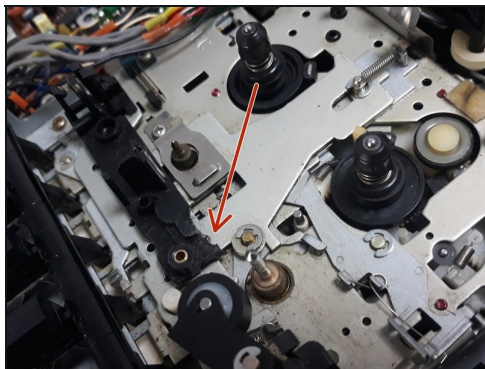
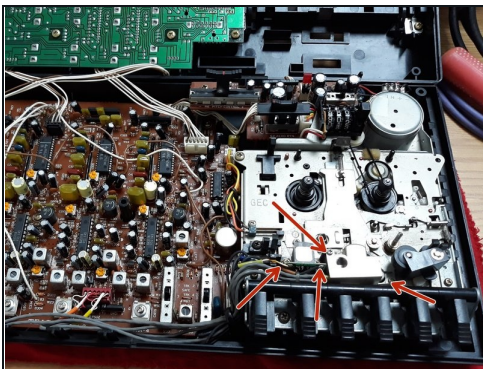
When your ON/OFF switch fails, follow this guide to get your Portastudio operational.

## Step 1 — Tascam Portastudio 05 Broken Play Switch



- Remove the power button
- Remove the screws from back
- Gently open the device

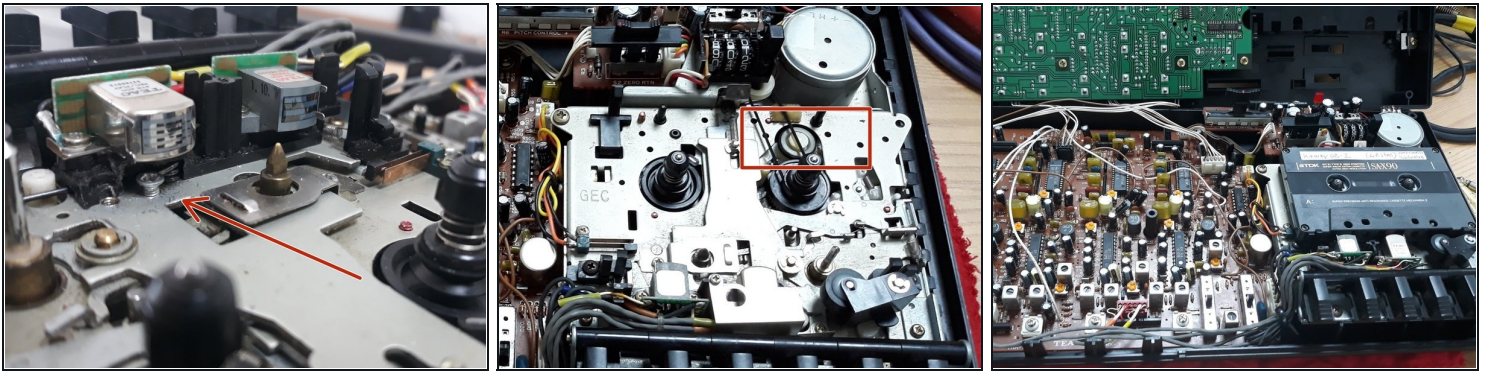
## Step 2



- Remove these screws
- The PLAY doesn't work because the plastic is broken. It holds a spring.
- Gluing the plastic will not work, as spring pressure is too high.

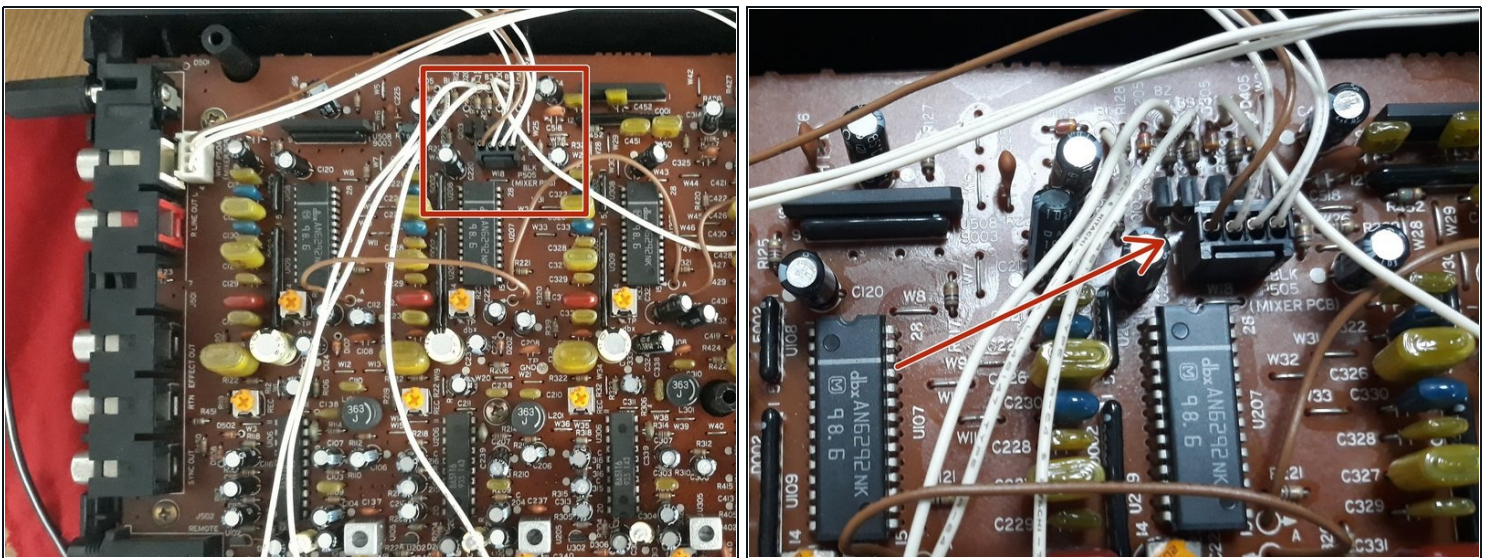


### Step 3



- To make a good support for the spring, drill a hole on the metal and ADD a little screw.

### Step 4



- ❗ This little plug has the sound output of the four tracks split. You can add independent outputs from tape.

Para remontagem de seu dispositivo, siga estas instruções na ordem inversa.