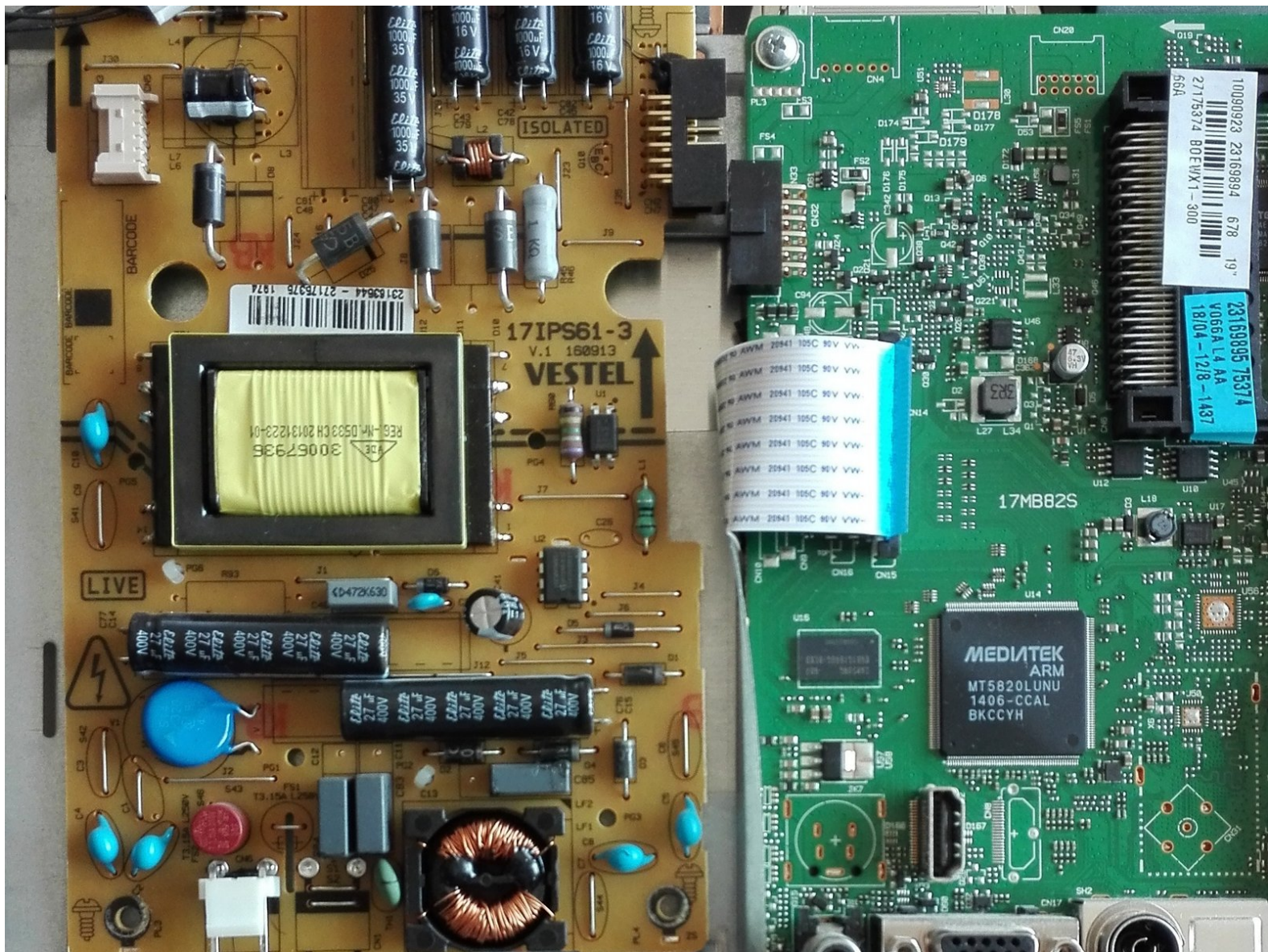




# AYA TV: Replacement of diodes

The AYA TV no longer turns on. Test and replace the diodes.

Written By: Pierre





## TOOLS:

- [Multimeter](#) (1)
- [New Item](#) (1)

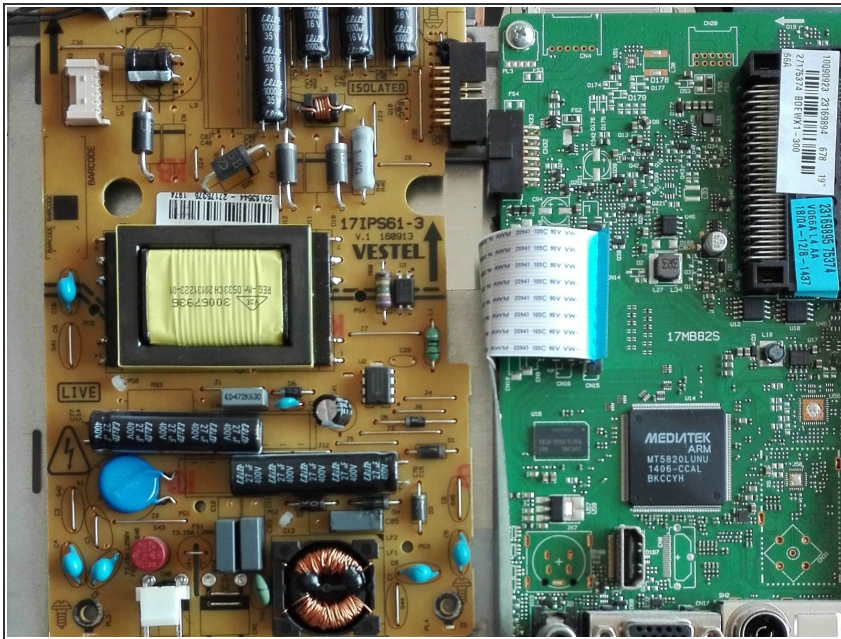


## PARTS:

- [New Item](#) (1)



## Step 1 — Disassembly and repair



- Disassembly of AYA TV. I believe my model is close to a 22" 56cm AYA TV A22FHD2203. It's a small TV.
- Remove the stand, remove the screws and remove the back cover by running a piece of plastic around the edges. Unscrew the board Vestel 17IPS61-3. Gently detach it from the green board.
- Test the diodes marked with a D and a number, side by side on the board (just above the yellow transformer). In my case the ones marked D9, D25 and D10 allowed a current to flow in the reverse direction.
  - How to test a diode: <https://www.fluke.com/en-gb/learn/best-p...>
- Unsolder the diodes and test them again. In fact only one now showed up as defective. (The others appeared defective because of a path for the current through the circuit board.)
- Purchase replacement diodes. I was able to find 10 SR5100 diodes on Amazon for less than 1€ (Aug 2018).

- 
- Resolder the diodes, standing proud from the board like the old ones, and making sure they're the right way round. Clip the leads on the other side of the board with a pair of wire cutters. Reassemble the TV. Problem solved - the TV works again.
- 

To reassemble your device, follow the instructions in reverse.