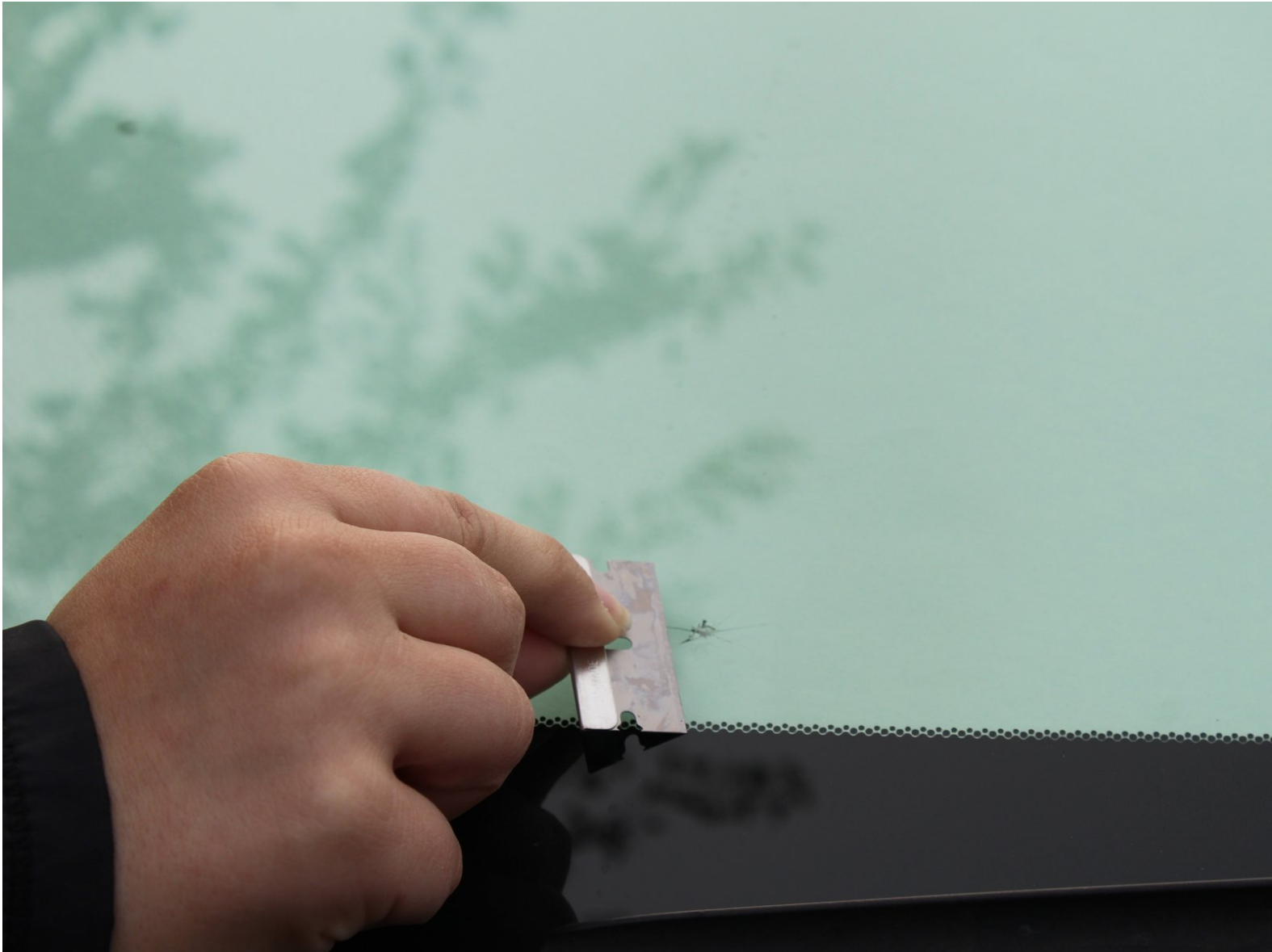




Rain-X Chipped Windshield Repair

How to repair a chipped windshield.

Written By: Jeffrey Ritchie



INTRODUCTION

This guide is applicable for any chip that is considered a star, flower, b.b. chip, and bull's-eye. It is not recommended for a spider crack (without air pocket), surface damage, or a regular crack.

Preparatory Steps

- 1) Purchase the Rain-X Windshield Repair Kit
- 2) Move the vehicle to a dry and covered space, aim for room temperature.
- 3) Wash and dry the windshield completely.



TOOLS:

- [Rain-X Windshield Repair Kit](#) (1)
-

Step 1 — Rain-X Chipped Windshield Repair



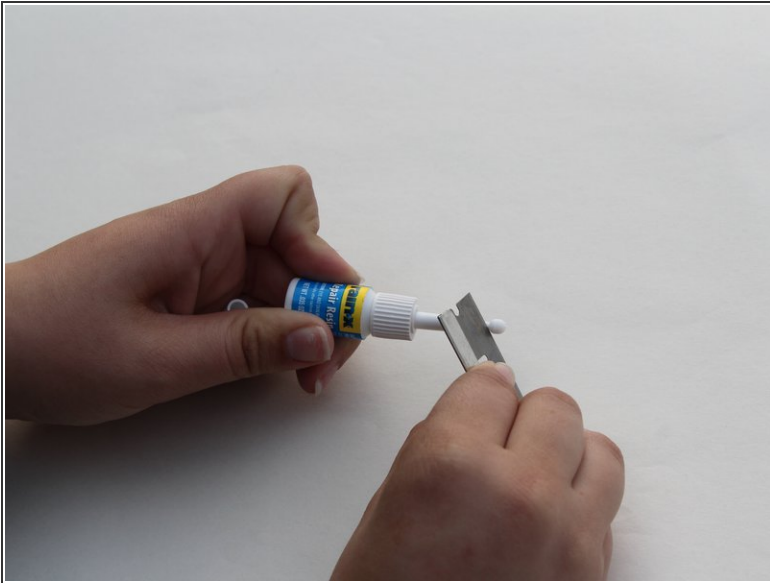
- To remove excess glass, scrape over the surface of the chip with the included razor blade.

Step 2



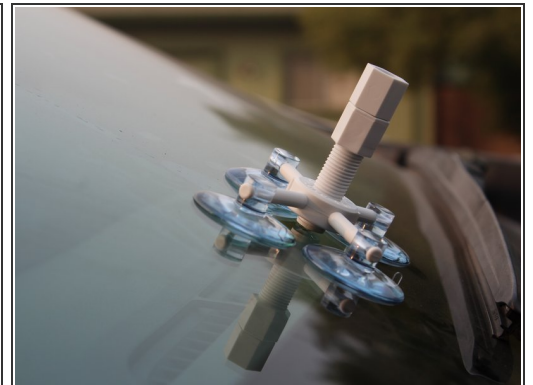
- Attach the Rain-X applicator base to the windshield, with the center of the base directly above the chip.

Step 3



- Cut the tip of the repair resin bottle using the razor blade.

Step 4



- To attach resin chamber, screw the chamber into the center ring of the applicator base.

Step 5



- Screw the resin chamber clockwise until it is in contact with the windshield.

Step 6



- Apply 3-6 drops of resin from the resin repair bottle into the resin chamber.

Step 7



- To add the pressure driver, screw the driver clockwise into the resin chamber.
- ⓘ Make sure to tighten almost all the way.
- ⓘ Make sure the pressure driver is in contact with the windshield.

Step 8



- Set timer for 4-6 minutes - Let the adhesive absorb into the chip for 4-6 minutes.
- ⓘ To determine if the repair resin has absorbed properly, look at the glass from a 45 degree angle.
- After the 4-6 minutes end, unscrew the pressure driver, turning it counter clockwise. Remove it to release any trapped air.

Step 9



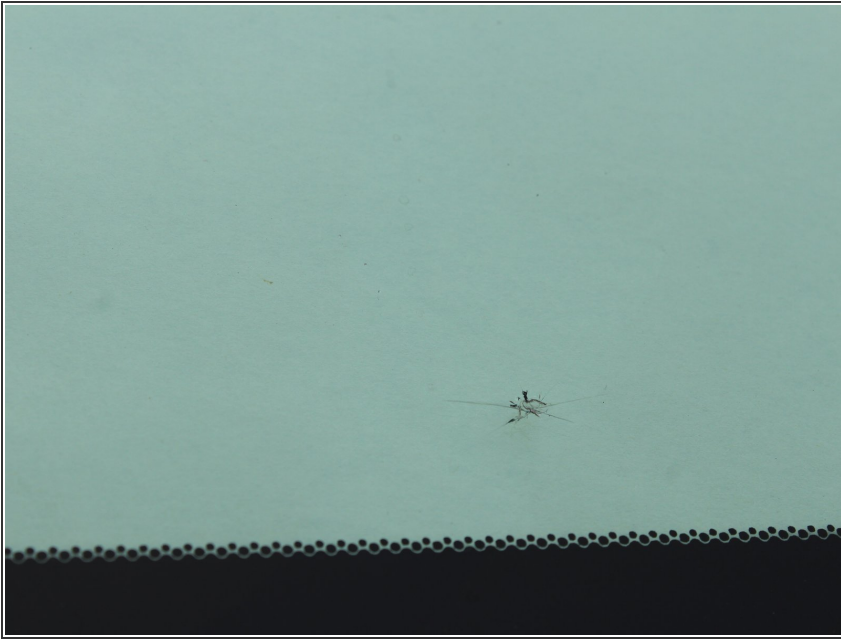
- Reinsert pressure driver by twisting clockwise.
- ⓘ This will discard any air remaining in the chip.

Step 10



- To check for remaining damage, look for a dark color to appear.

Step 11



- Leave to cure for 5-10 minutes.

Step 12



- Once finished curing, remove the resin chamber and the pressure driver by screwing counter clockwise.

Step 13



- Remove the applicator by using the tabs on the suction cups.

Step 14



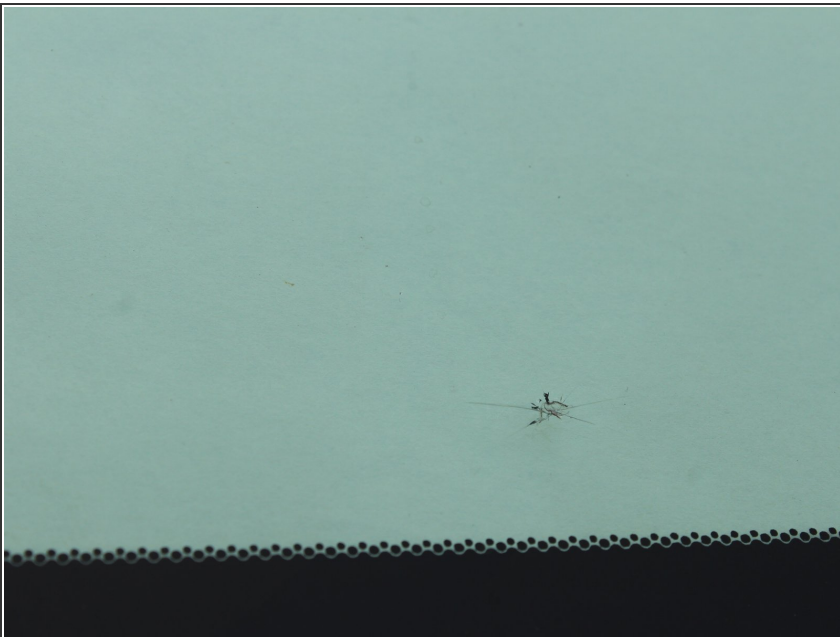
- Clean off any excess adhesive from the windshield.

Step 15



- Cover the chip gently with a curing strip.

Step 16



- Move the car into direct sunlight and leave for 4-6 hours.
- Remove the curing strip and enjoy.

To reassemble your device, follow these instructions in reverse order.