



# Mac mini Late 2018 Disassembly

Detailed photographed teardown of the new Mac mini in Space Gray.

Written By: Wouter de Vries



---

## INTRODUCTION

**This is a member-submitted teardown.** [iFixit's teardown of the Mac mini Late 2018 can be found here](#), and the [RAM replacement guide can be found here](#).

---



### TOOLS:

- [Essential Electronics Toolkit](#) (1)
-

## Step 1 — Out of the box



- So here it is, exactly the same form factor as the previous Mac mini, but now in Space Gray

## Step 2 — Lets flip it over



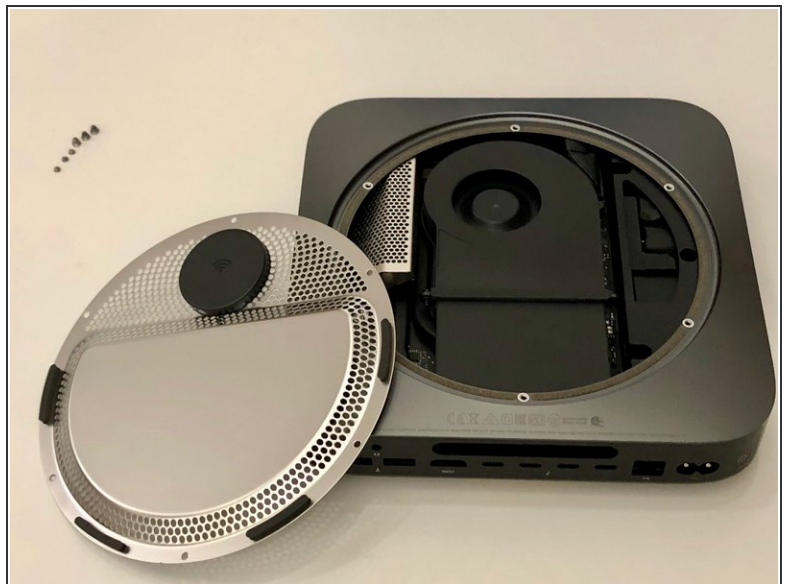
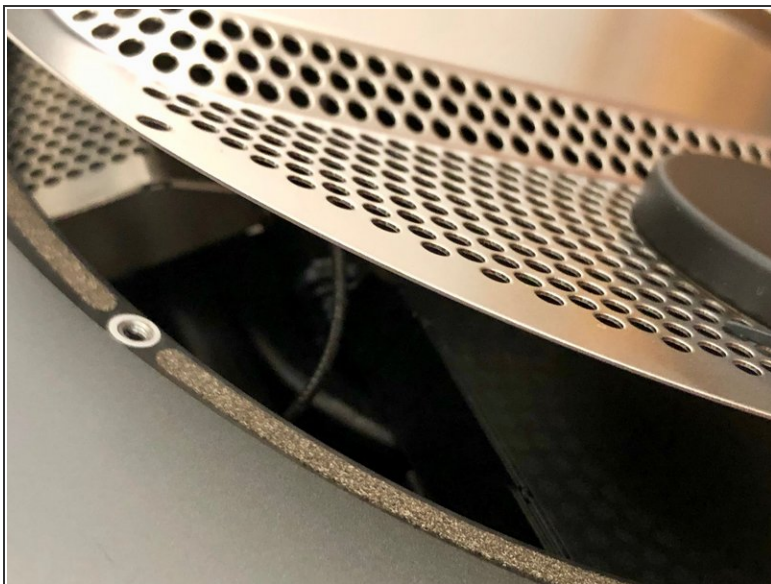
- Once flipped over, a familiar black cover is revealed.
- Pry open the lid to release it from the three large screws
- The lid had a soft foam inside to dampen the vibrations of the beefed up fan

### Step 3 — Take off the metal cover



- The lid is secured with the same TR6 screws as the 2014 model

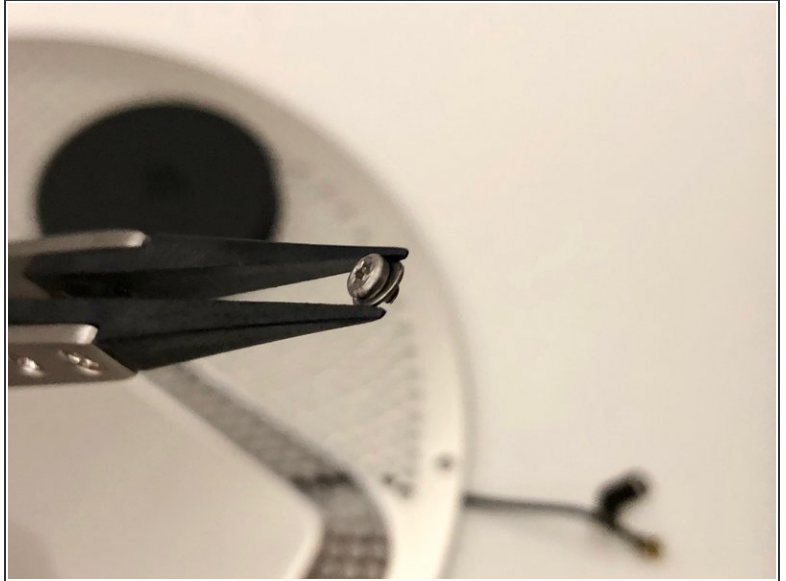
### Step 4 — Reveal the innards



- The antenna cable is very short, so watch out; rotate the cover to reveal the internals

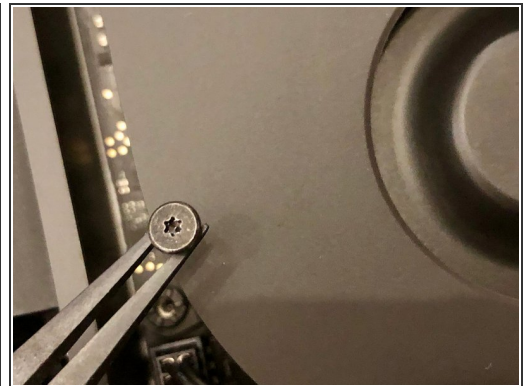
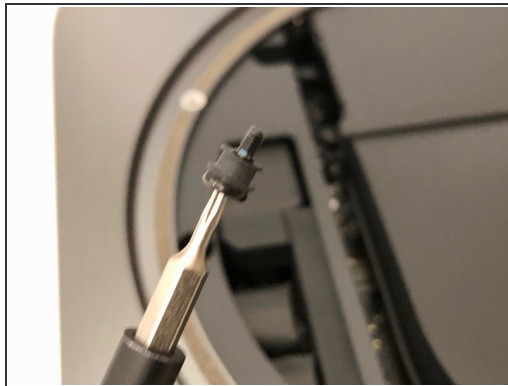
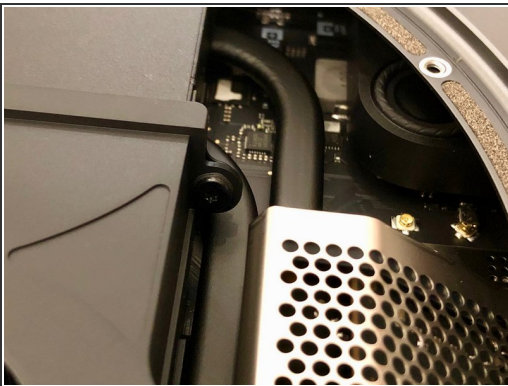


## Step 5 — Antenna cable



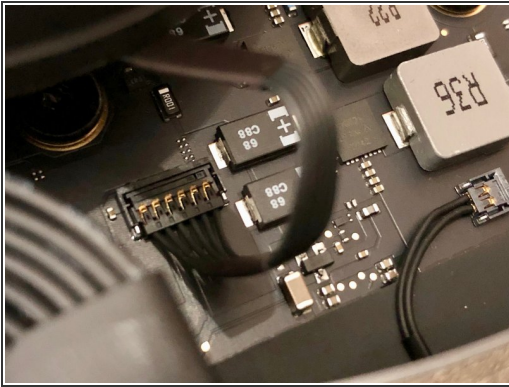
- The antenna cable is held down with a little TX6 screw
- It has a tiny washer to make sure no stress is applied to the cable

## Step 6 — Take off the fan



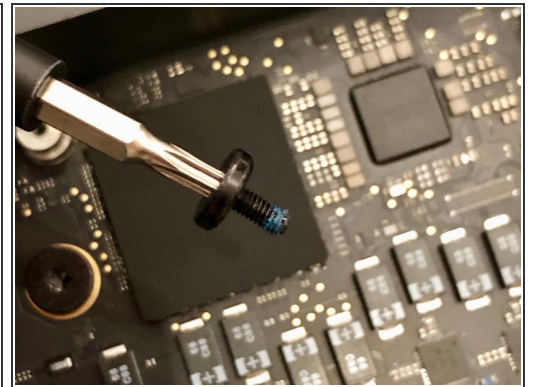
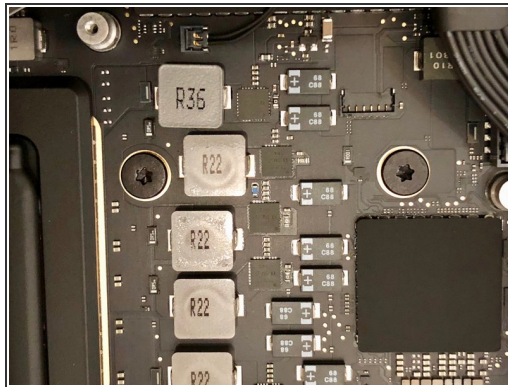
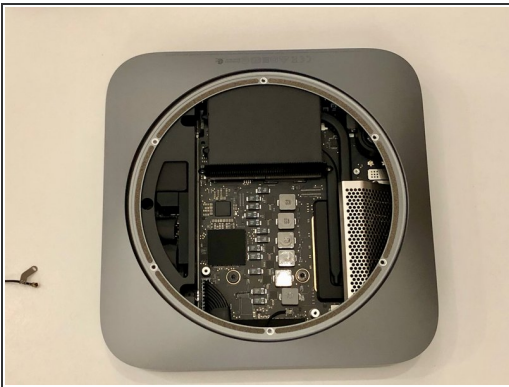
- The fan has four identical TX6 screws holding it down
- The screws go through a rubber tube to reduce vibration

## Step 7 — Take the fan out



- Underneath the fan the connector pops off easily
- The fan feels solid. Much better than previous models

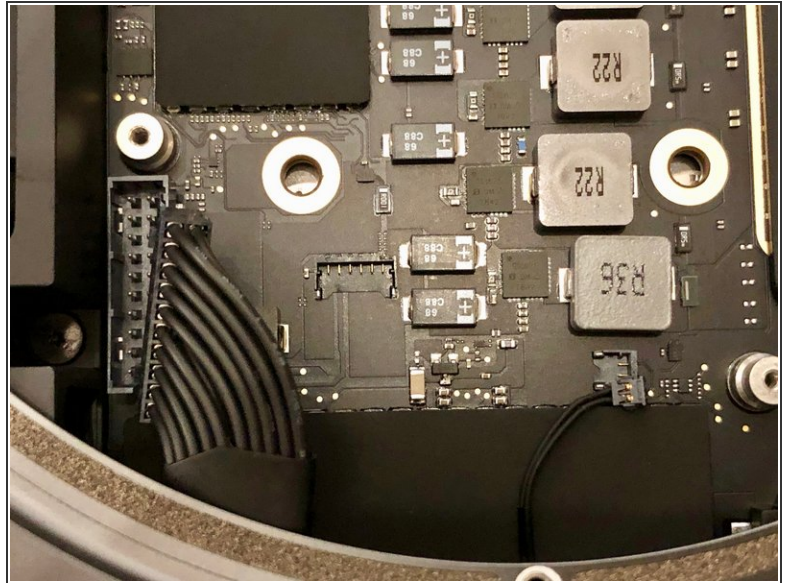
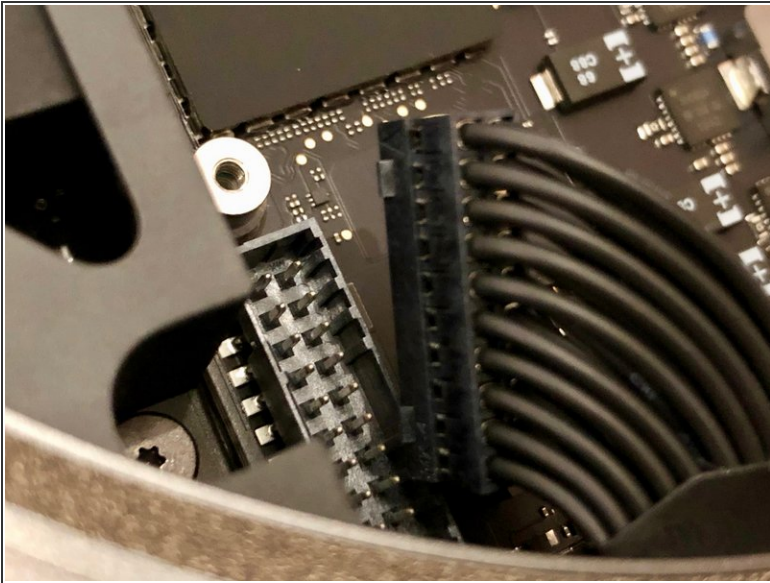
## Step 8 — Next, the motherboard



- Now, lets take out the motherboard
- Massive (for the mini) TX10 screws secure the motherboard to the chassis

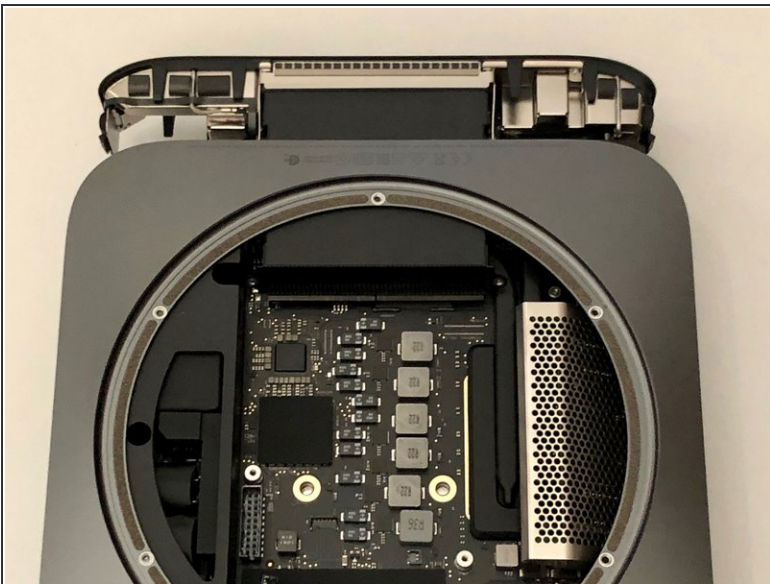


## Step 9 — Unplug some wires



- The power supply can be unplugged by as many wires as possible between your iFixit tweezers and pull upwards
- Also take off the tiny power led connector

## Step 10 — Motherboard out



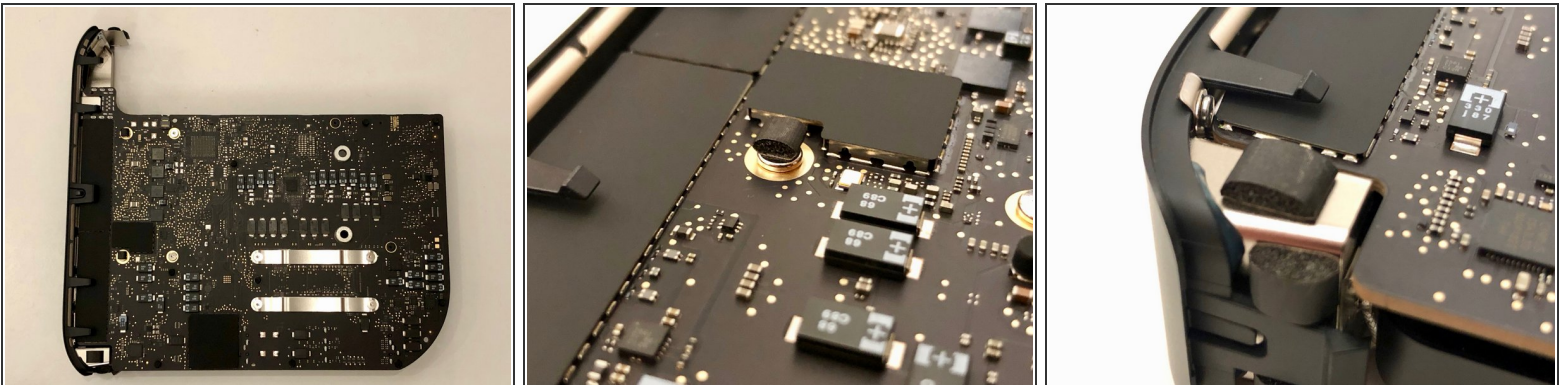
- Slide the motherboard out by gently applying pressure to the heatsink

## Step 11 — Details on the design



- Some interesting design choices made here. A full size CMOS battery
- The wifi wiring runs underneath the large speaker
- The power button is attached to a ultra flat cable that runs in an arc along the heatsink

## Step 12 — Motherboard underside



- We flip over the motherboard to see a massive amount of tiny components
- Also some familiar pieces of foam all over the place

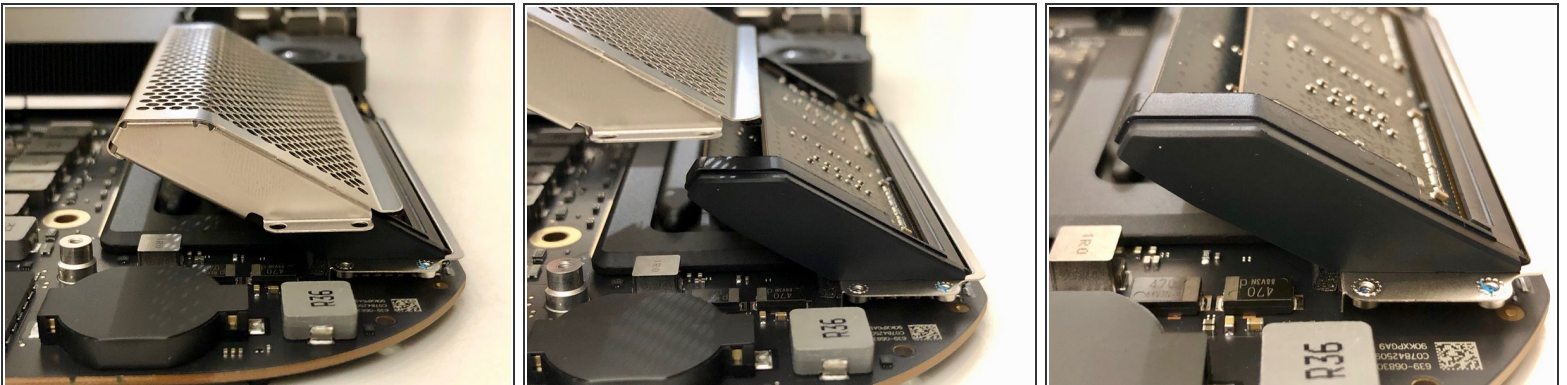


## Step 13 — Memory cover



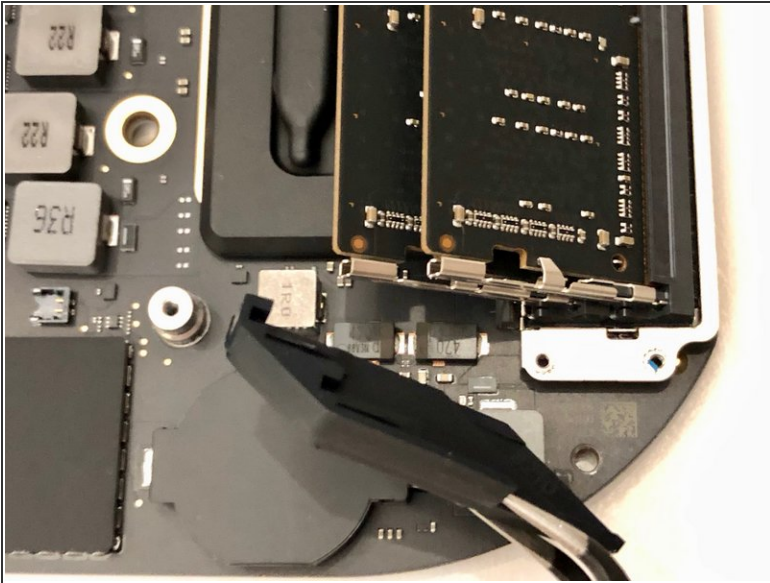
- But now what we are all here for. The RAM
- Four TX5 screws holt it down

## Step 14 — Slide off the cover



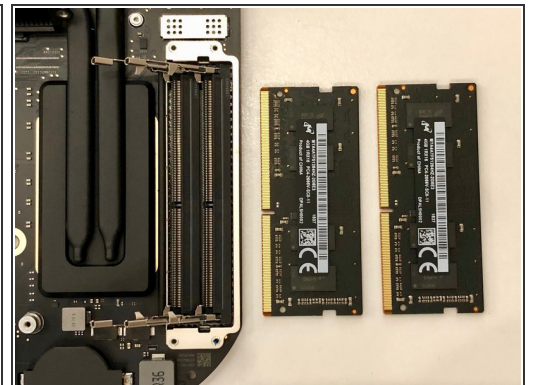
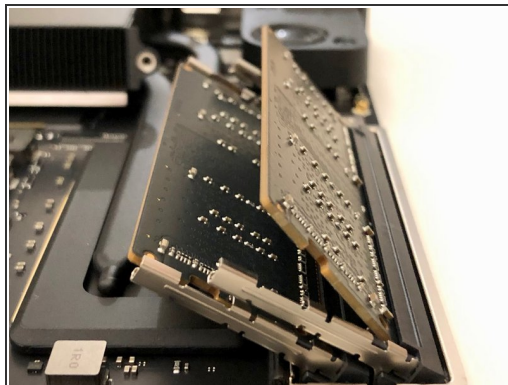
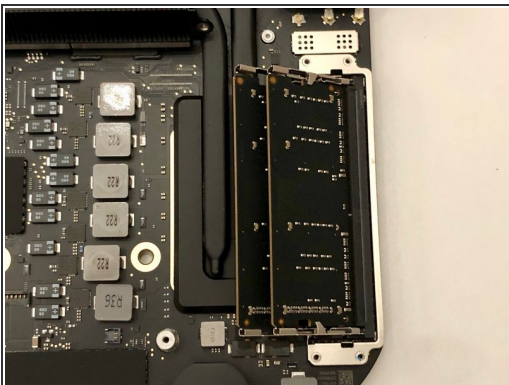
- The memory cover slides off at an angle

## Step 15 — Rubber spacers



- These rubber parts will be a pain to put back on later.
- There are tiny pieces of rubber in it that need to slide into the metal clips holding the memory in place

## Step 16 — Memory out



- The memory itself sits upside down in its sockets
- The springs are very strong and will shoot the memory in your face if you're not careful!

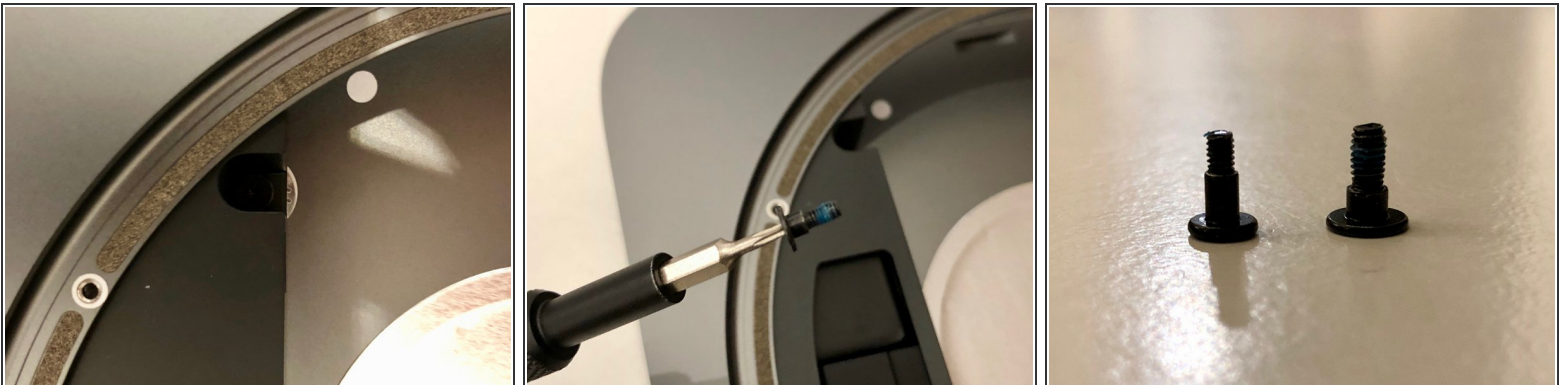


## Step 17 — Power supply connector



- The power supply is secured in a similar way as with the previous models
- A little clip has to be removed, and the connector can be rotated

## Step 18 — Power supply screws



- The power supply is held down with three TX6 screws
- They look just like the fan screws, but they appear just a little bit thicker and with longer thread

## Step 19 — End of the line



- After taking out the power supply we are left with an empty shell
- I really enjoyed taking this mini apart. My verdict is it's much easier than the 2014 model as cables are in a more logical place

To reassemble your device, follow these instructions in reverse order.