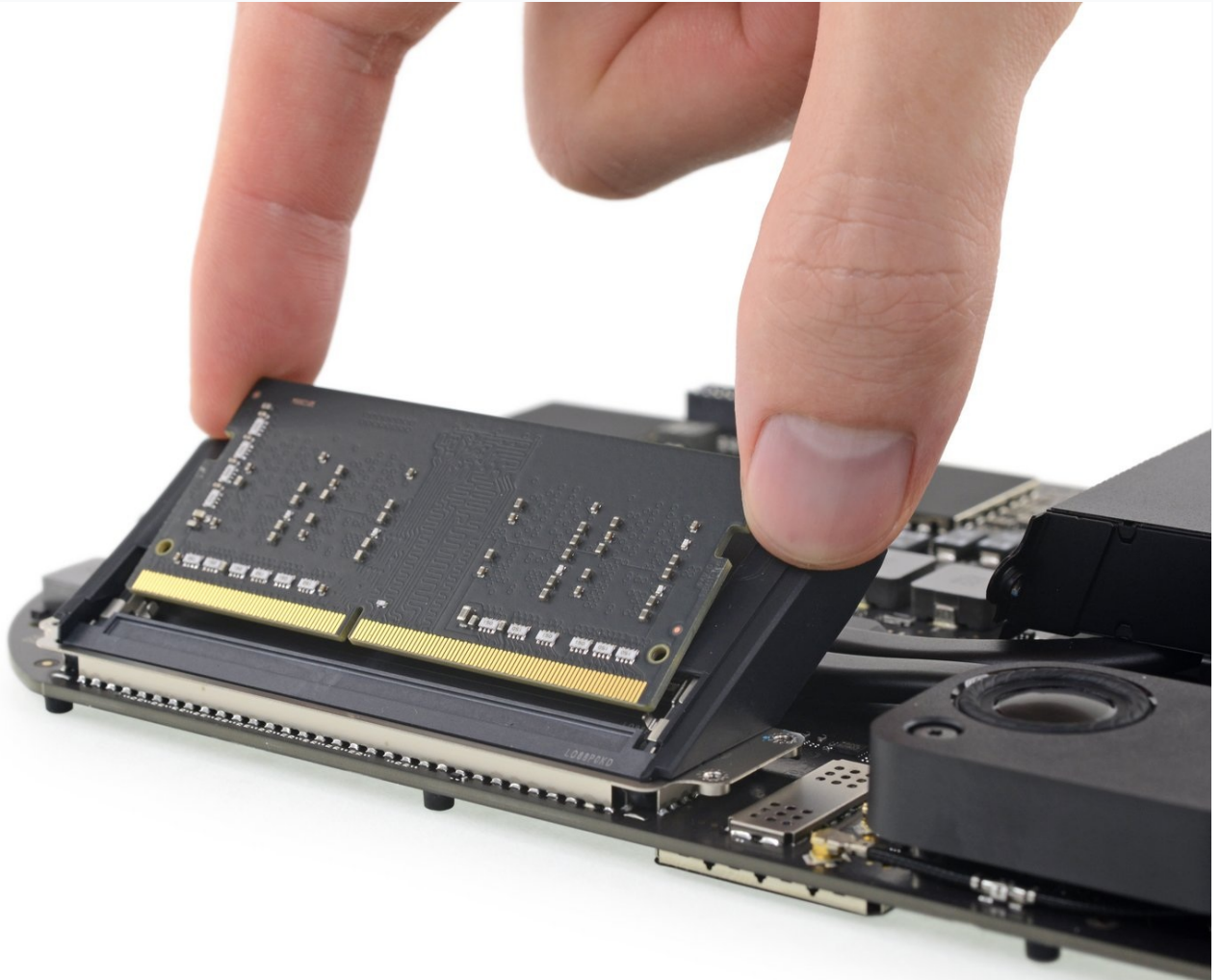




Mac mini Late 2018 Memory (RAM) Replacement

Learn how to upgrade or replace the memory in...

Written By: Rod Bland



INTRODUCTION

Learn how to upgrade or replace the memory in your 2018 Mac mini with this RAM replacement guide. The mini can support up to 64 GB of RAM, using any combination of 8 GB, 16 GB, or 32 GB DDR4-2666 SODIMM RAM modules.

TOOLS:

[TR6 Torx Security Screwdriver](#) (1)
[iFixit Opening Tool](#) (1)
[Spudger](#) (1)
[T5 Torx Screwdriver](#) (1)
[TR10 Torx Security Screwdriver](#) (1)
[Tweezers](#) (1)

PARTS:

[Mac mini Late 2018 Memory Maxxer RAM Upgrade Kit](#) (1)
[PC4-21300 16 GB RAM Chip](#) (1)

Step 1 — Bottom Cover



 **Power off and unplug your Mac mini before you begin.**

- Use an opening tool to pry the bottom cover up off of the Mac mini.

Step 2



- Lift and remove the bottom cover.
- ☐ To reinstall the cover:
- Align it carefully so that the words "Mac mini" can be read when the ports are facing you.
 - Then, press down on the cover to snap its three hidden clips into place.

Step 3 — Antenna Plate



- Remove six TR6 Torx security screws securing the antenna plate, of the following lengths:
 - Three 4.1 mm shoulder screws
 - Three 1.8 mm screws
- ☐ Throughout this repair, [keep track of each screw](#) and make sure it goes back exactly where it came from to avoid damaging your Mac.

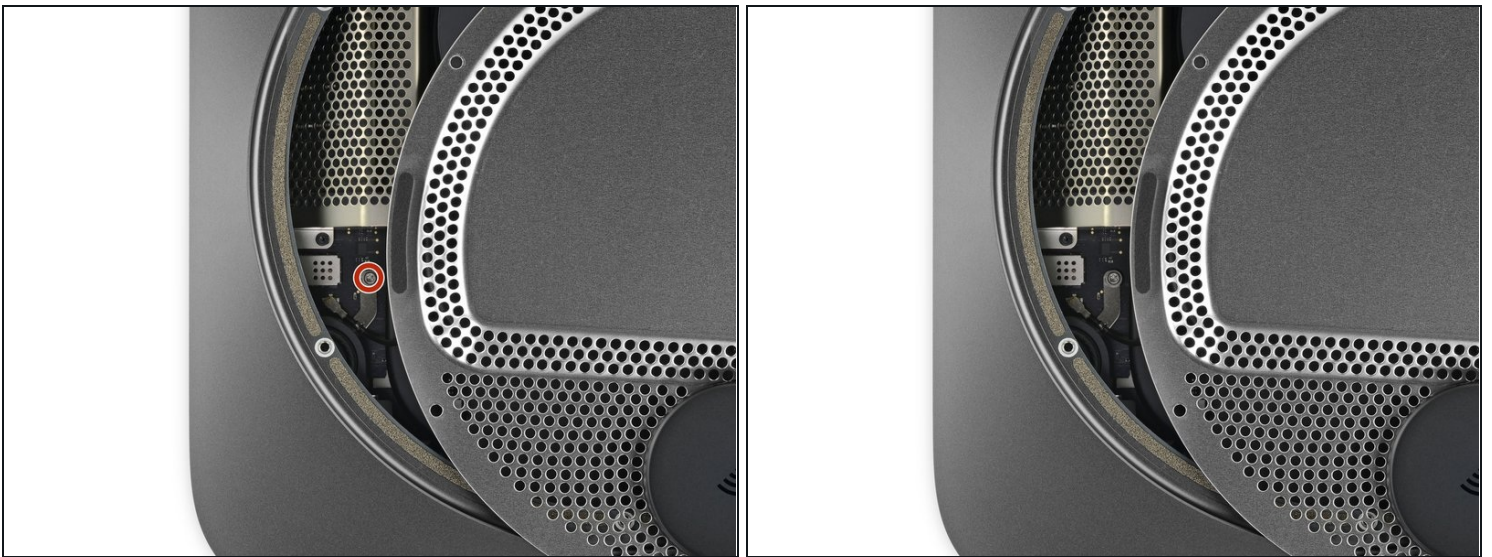
Step 4



⚠ Do not completely remove the antenna plate; it is still connected to the Mac mini by an antenna cable.

- With the Mac mini's ports facing you, carefully lift the antenna plate and slide it about an inch to the right.

Step 5



- Use a T6 Torx driver to remove the 2.8 mm screw securing the antenna cable to the Mac mini's logic board.

Step 6



 The antenna cable connector and socket are fragile.

- Use the point of a spudger or fine [tweezers](#) to gently pry the antenna cable connector straight up off its socket on the logic board.
- ☑ To reconnect the cable, use tweezers to position it carefully over its socket on the logic board, and then press it straight down until it snaps into place.
- ☑ If you need more slack in the cable, you can temporarily pry it from the clips securing it to the antenna plate.

Step 7



- Remove the antenna plate from the Mac mini.

Step 8 — Fan



- Use a T6 Torx driver to remove the four 7.2 mm screws securing the fan:
 - Two screws securing the fan to the logic board
 - Two screws with rubber shoulders securing the fan to the exhaust vent
- ① Rubber grommets secure these screws to the fan, so they may not come out completely. Just make sure they are fully loosened.

Step 9



⚠ Don't try to remove the fan completely in this step—just lift it so you can access the cable underneath.

- Lift the fan from the flat edge where it meets the exhaust vent, being careful not to strain the fan cable underneath.

Step 10



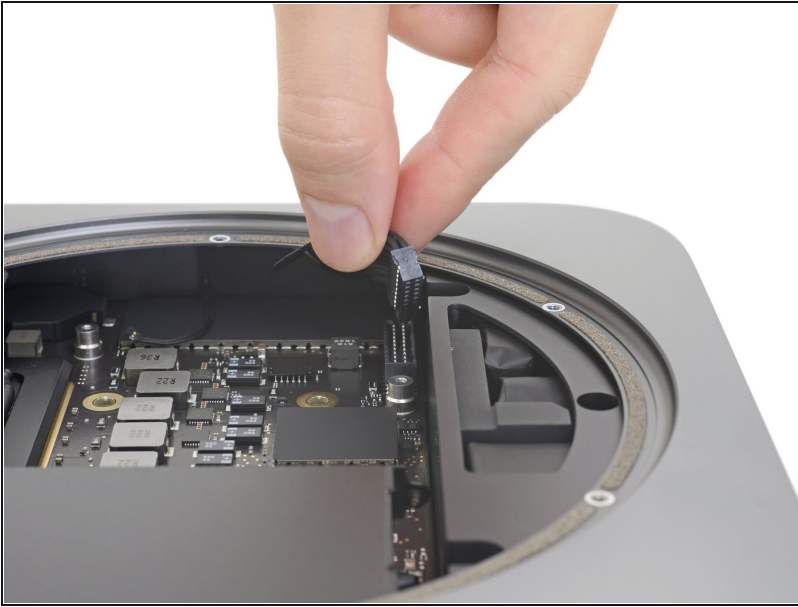
- Grasp the fan cable by all six wires and gently lift to unplug it from the logic board.
⚠ If the cable won't disconnect, don't force it, or you may pull the socket off the board. Try holding the socket down with your thumb, then pinch the cable close to the socket with your index finger and gently lift.

Step 11



- Remove the fan.

Step 12 — Logic Board Assembly



- Grasp the power supply cable and lift to disconnect it from the logic board, wiggling as needed to loosen it up.

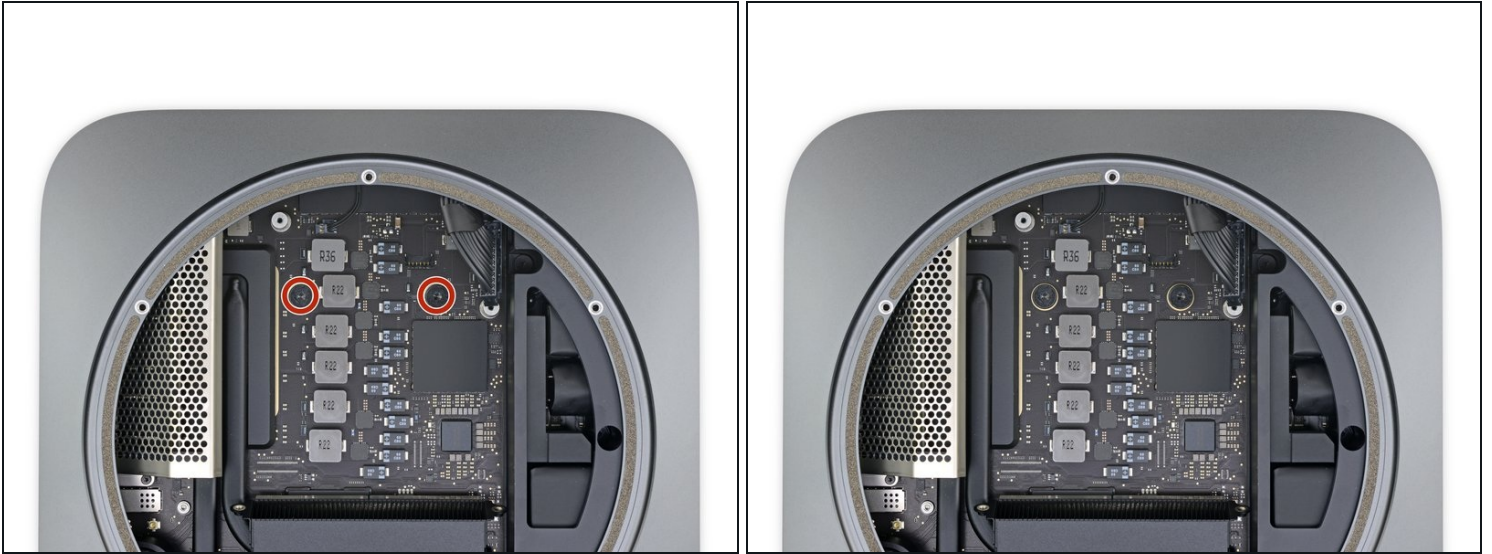
Step 13



- Carefully lift the connector for the LED indicator light straight up to disconnect it from its socket on the logic board.

⚠ Take care not to pry under the socket, or you may break it off the board.

Step 14



- Use a T10 Torx driver to remove the two 7.5 mm screws securing the logic board.

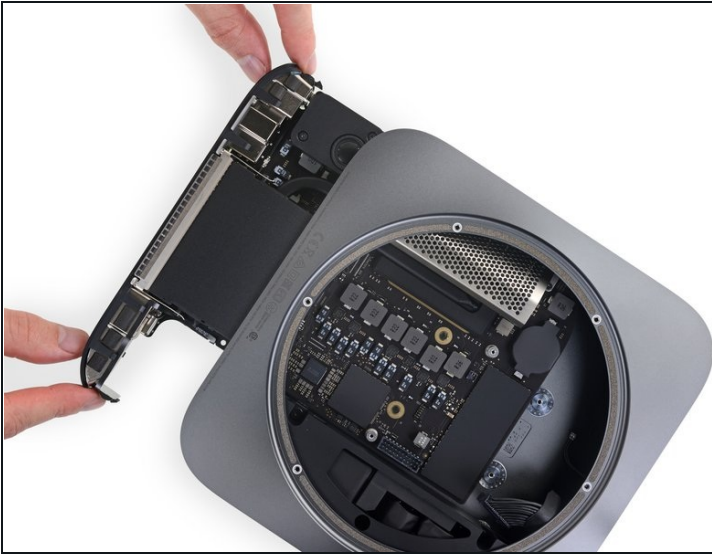
Step 15



⚠ In this step, you'll push the logic board free from the clips holding it to the frame. **Push only where directed or you may damage the fragile cooling fins.**

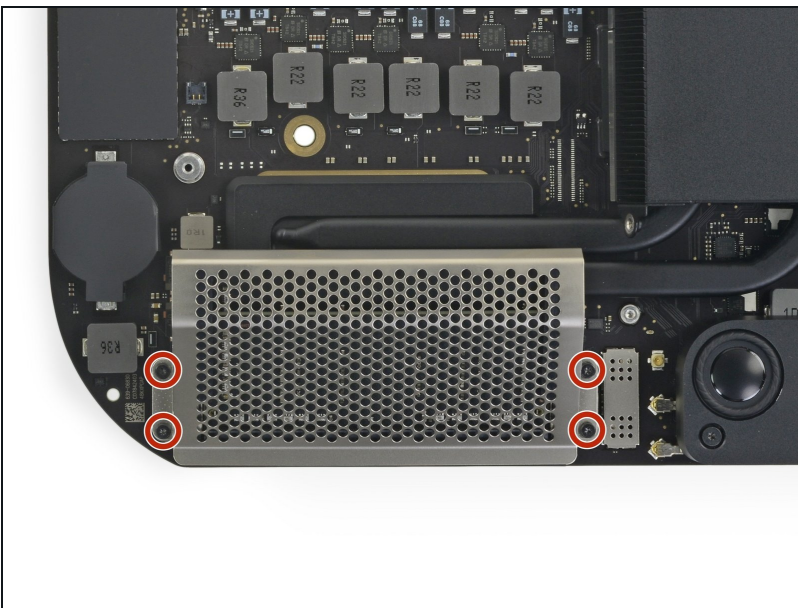
- Place a thumb at each end of the exhaust vent, over the fan screw holes.
- Push firmly in the direction of the ports until the logic board unclips and begins to slide out of the Mac mini.

Step 16



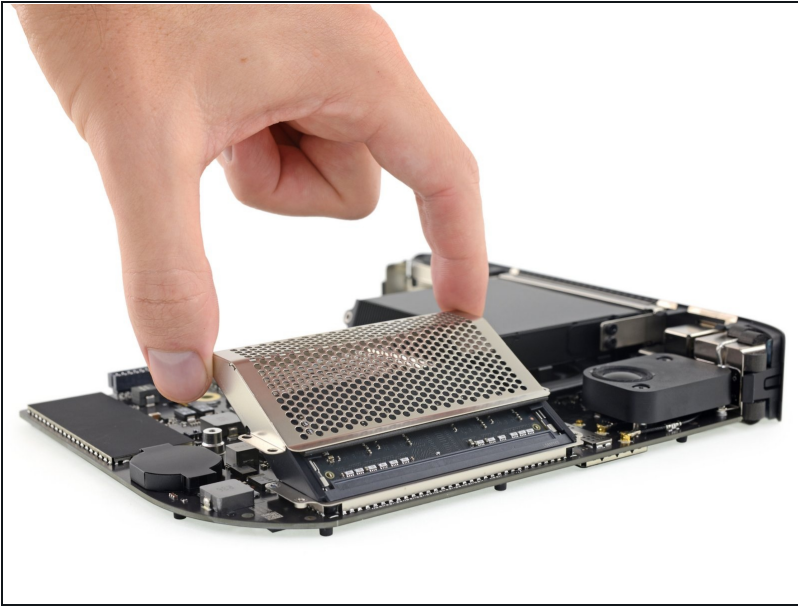
- Slide the logic board out of the case.
- ☑ When reinstalling the logic board, make sure to hold the thin [LED indicator light cable](#) out of the way so it doesn't get damaged.

Step 17 — RAM



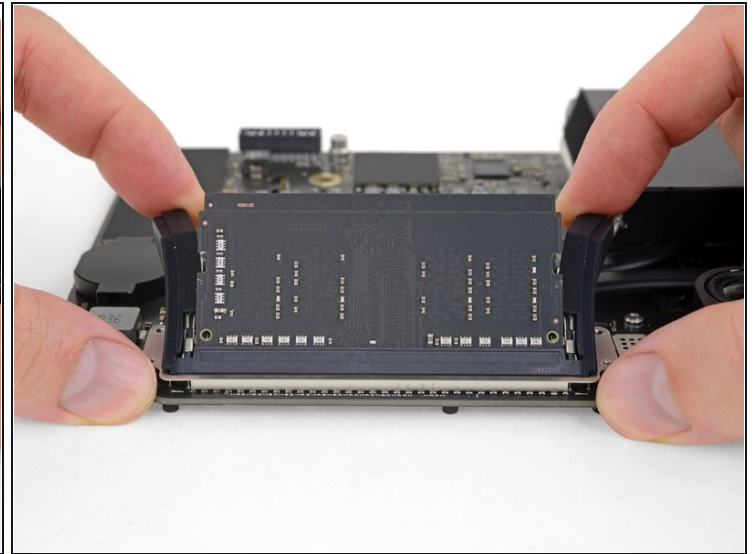
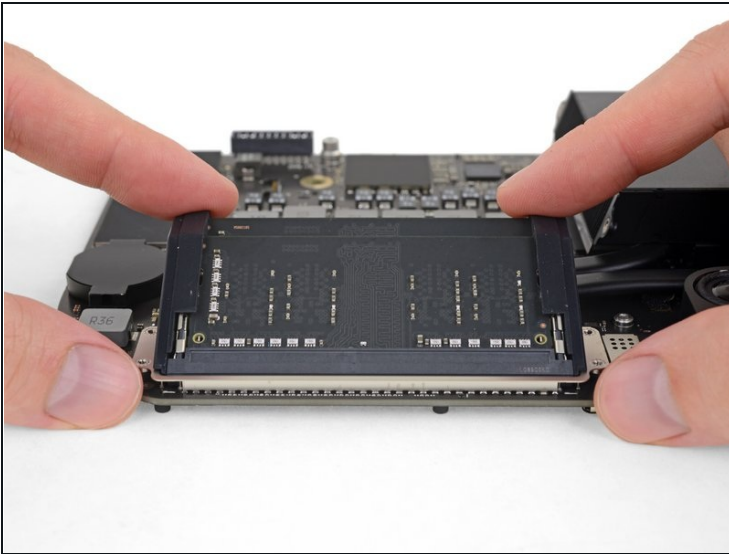
- Use a T5 Torx driver to remove the four 2.8 mm screws securing the RAM shield.

Step 18



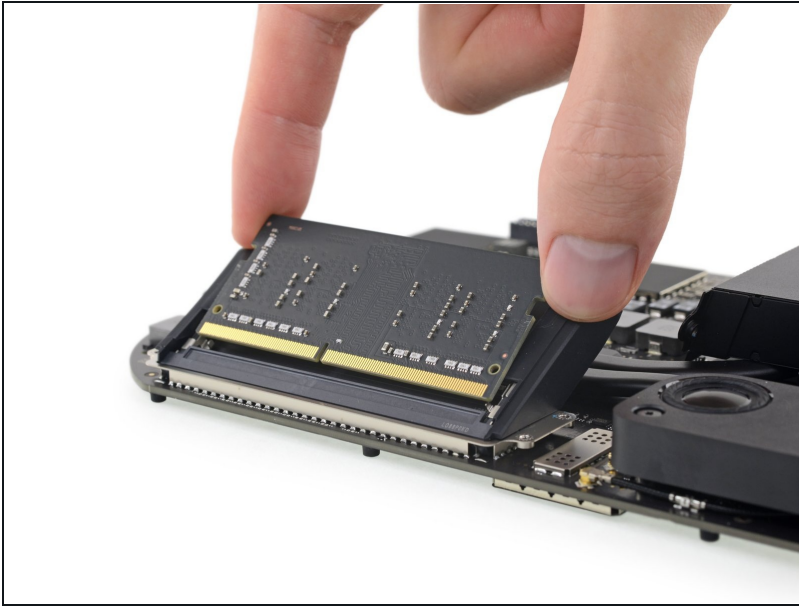
- Lift the RAM shield and slide it off of the RAM assembly.

Step 19



- Two clips secure each RAM module in place, one on each side. Using your fingers, spread the clips away from the RAM module.
 - ① When released, the RAM modules will pop up at a slight angle.

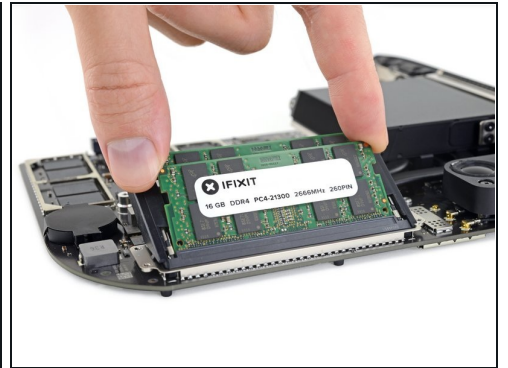
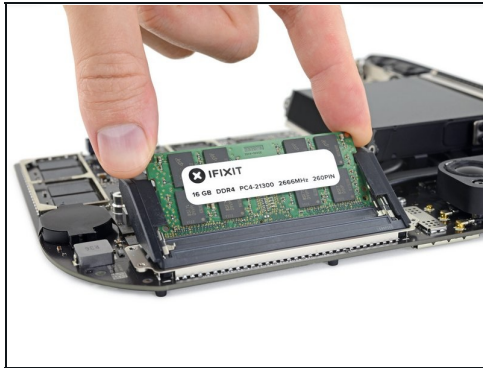
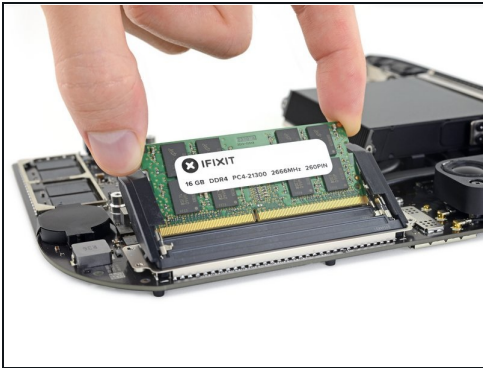
Step 20



- Slide each RAM module straight out to remove it.

⚠ When handling the RAM modules, touch only the outside edges. Take care not to touch the gold-colored contact points along the bottom edge.

Step 21



★ To install new RAM modules:

- Make sure the module is oriented correctly and the notch on the bottom is aligned, and then slide it in at about the same angle as you took it out. Press evenly until the gold contacts are no longer visible.
- Repeat for the second module.

Step 22



- ★ Finally, press the top edge of each RAM module to swing it down toward the logic board until the retaining clips on each side snap into place.
- If the rubber guards interfere with the clips, spread the rubber guards away from the RAM with one hand and use the other to angle the RAM modules into place. Then, release the guards.

 Check the clips and make sure both modules are fully seated and secure.

To reassemble your device, follow the above steps in reverse order.

Take your e-waste to an [R2 or e-Stewards certified recycler](#).

Repair didn't go as planned? Check out our [Answers community](#) for troubleshooting help.