



Portege Z830-S8302 Speaker Replacement

How to replace the speakers in a Toshiba Portege Z830-S8302.

Written By: Tanner Krygier



INTRODUCTION

Replacement of the speakers requires the removal of the battery. Be careful when handling the battery and avoid using sharp metal objects when ever possible.

TOOLS:

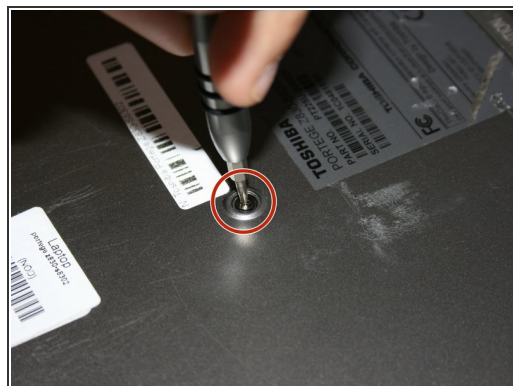
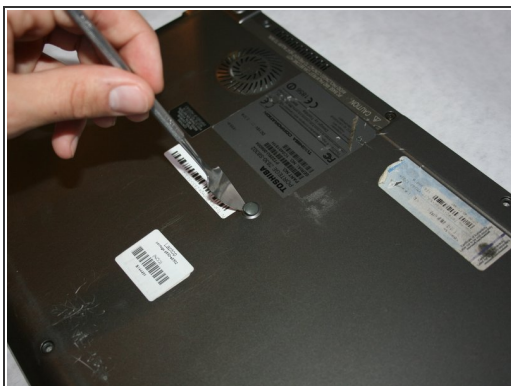
- [Phillips #0 Screwdriver](#) (1)
 - [Metal Spudger](#) (1)
 - [Spudger](#) (1)
 - [T7 Torx Screwdriver](#) (1)
-

Step 1 — Battery



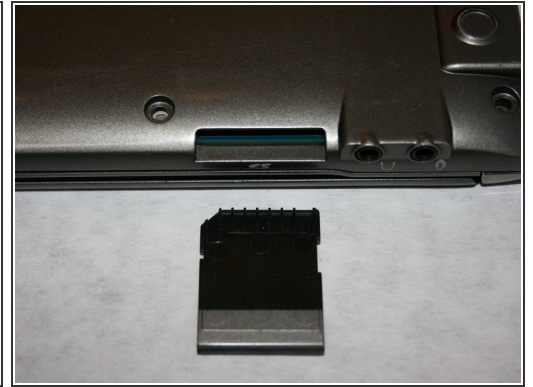
- Flip the laptop over with the screen facing down to reveal the bottom panel.
- Unscrew each of the highlighted screws with a Phillips #0 screwdriver.

Step 2



- Use a metal spudger to remove fitting and reveal the screw.
- Use a screwdriver with a Torx T7 bit to remove the screw.

Step 3



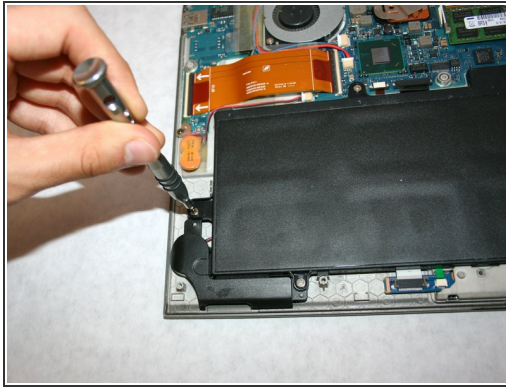
- The SD Card slot is on the top right corner of the device near the headphone jacks.
- Depress the fake SD Card and release.
- Pull the fake SD Card out and remove it completely from the slot, as this will help in the removal of the backplate.



Step 4



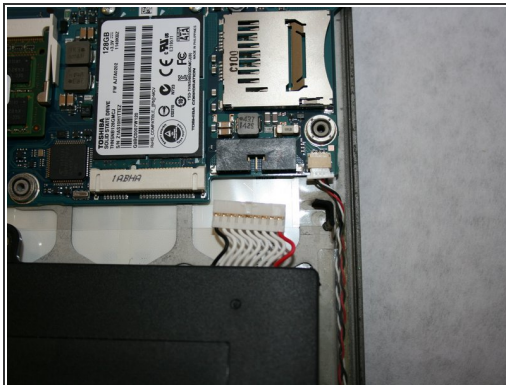
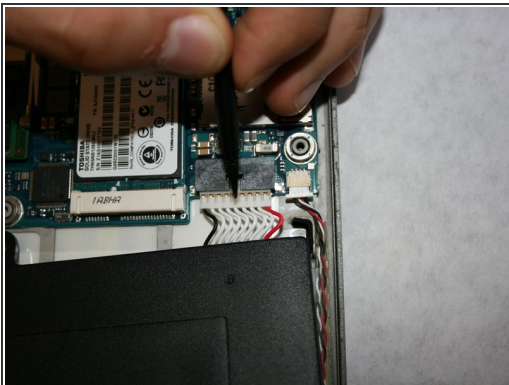
- Lift the back plate starting at the opposing edge to the SD card. Lift from left to right and continue lifting this plate at this angle until it's free from the laptop.
- Once the backplate is completely off, this will reveal the inside components of the device.
- ☑ Upon reassembly of the back cover, make sure to line up the two headphone jacks on the upper right corner with the holes in the back cover or else it will not seat fully.

Step 5



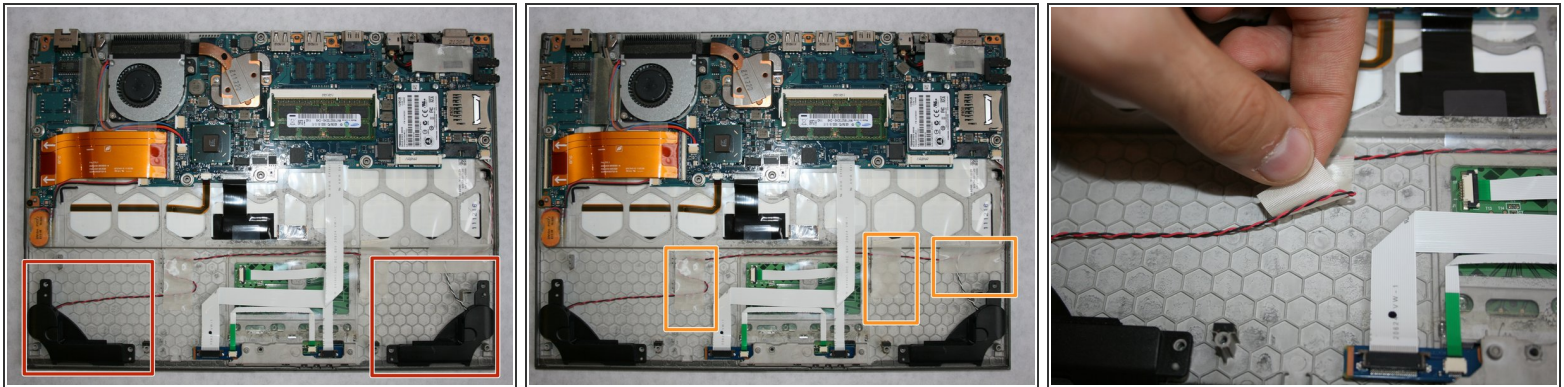
-  The battery is the black rectangular piece in the bottom half of the device.
- Remove six 5mm screws holding down the battery using a Phillips PH0 screwdriver.
 - Lift the battery and separate from its place holder.
-  Do not fully remove the battery as it is still connected by the connector in the top right corner.

Step 6



- Using the nylon spudger, disconnect the white plugin.
- Once the wire has been disconnected you may remove the battery.

Step 7 — Speaker



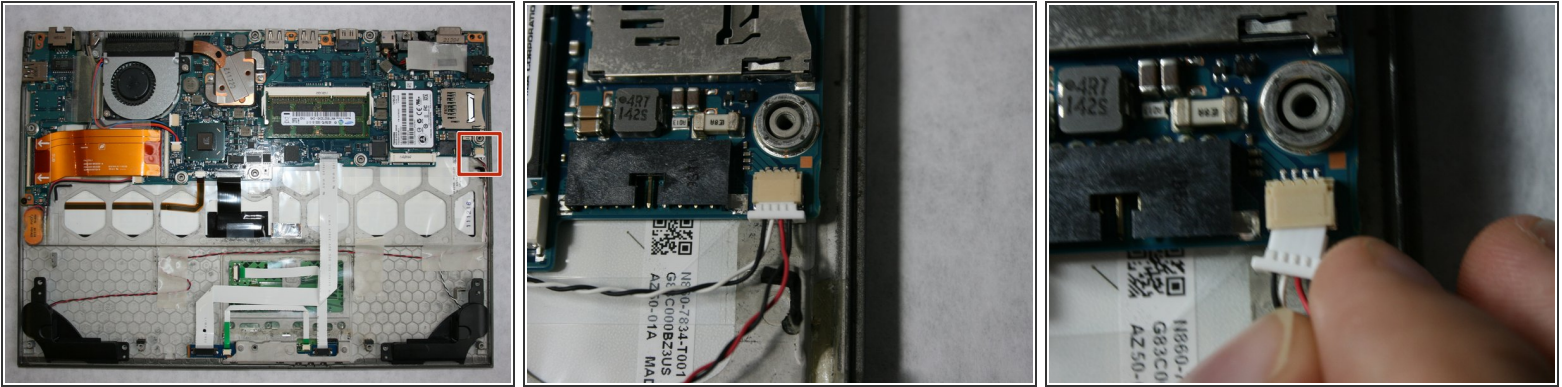
- There are two black speakers on either side of the bottom corner of the device.
- Remove tape securing speaker wires to frame.

Step 8



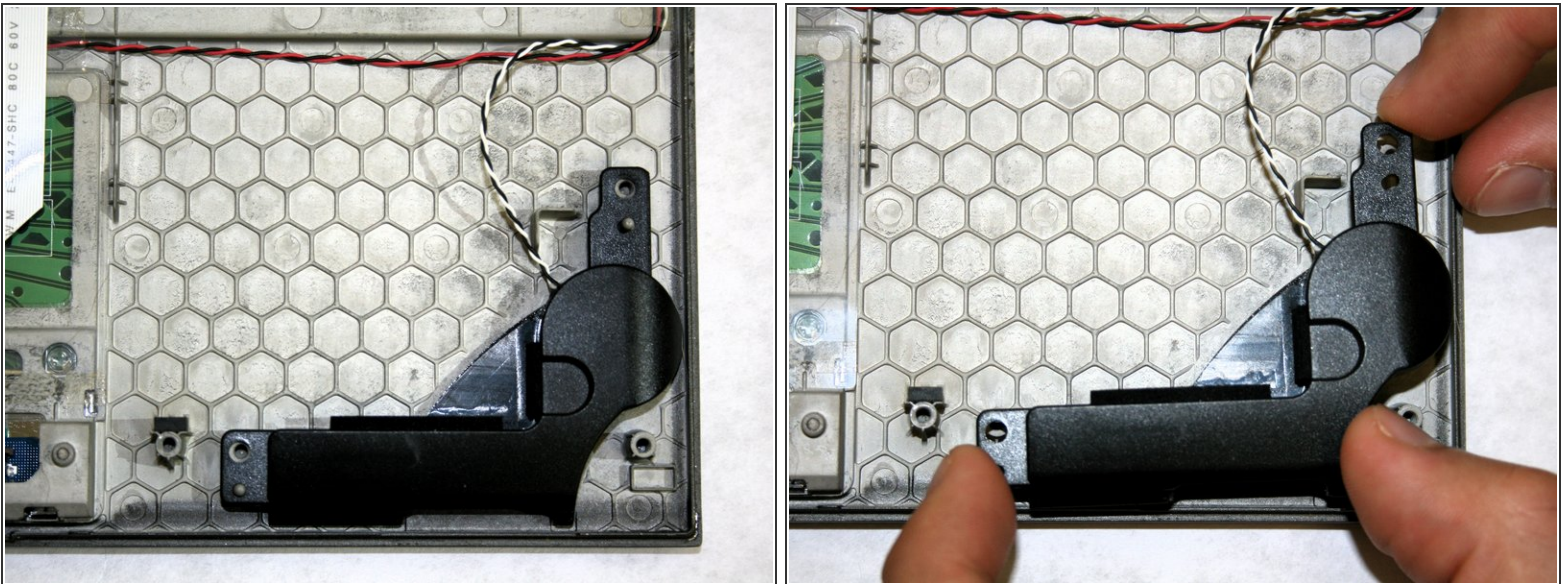
- Using a blue plastic opening tool, disconnect the white cable running from the trackpad to the motherboard, at the motherboard port.
- ⚠ Disconnect the cable gently and do not yank on cable, this step is to get the cable out of the way of speaker wires.

Step 9



- The speakers are connected by a plug with wires (Red/Black) (Black/White) to the motherboard.
- Simply remove the plug with your fingers, disconnecting the speakers from the motherboard.

Step 10



- With the plug disconnected, now you can remove the speakers.
- Lift the speakers up vertically removing them from pegs that hold them in place.
- ⓘ This does not require a tool as they are not fastened down, just lift and remove.

To reassemble your device, follow these instructions in reverse order.

This document was generated on 2020-11-28 07:03:23 AM (MST).

