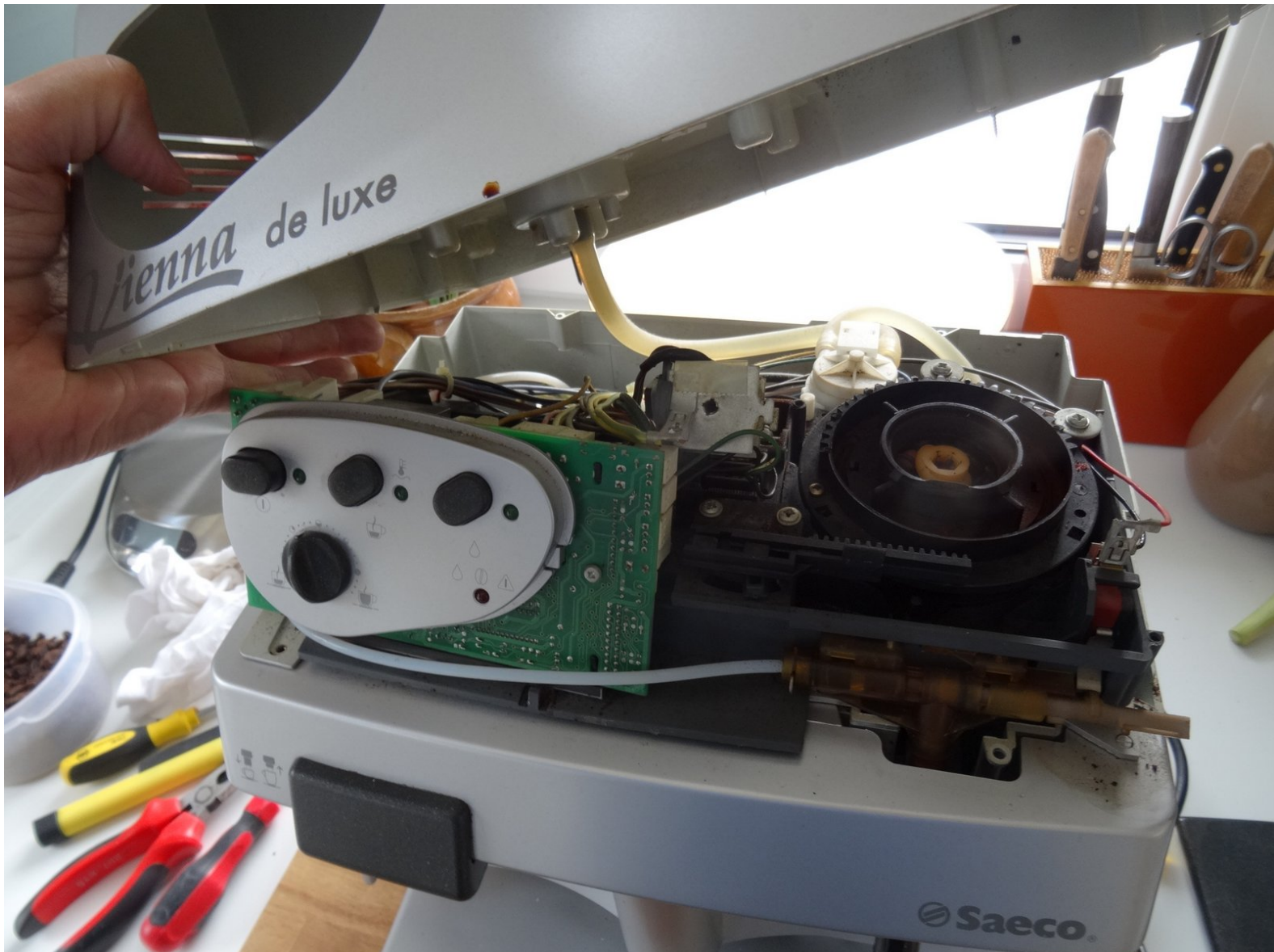




Saeco Vienna Sup 018 Grindstones Replacement

Replacement of the grindstones in a Saeco Vienna Sup 018

Written By: VauWeh





TOOLS:

- [Phillips #2 Screwdriver](#) (1)
- [T10 Torx Screwdriver](#) (1)



PARTS:

- [New Item](#) (1)

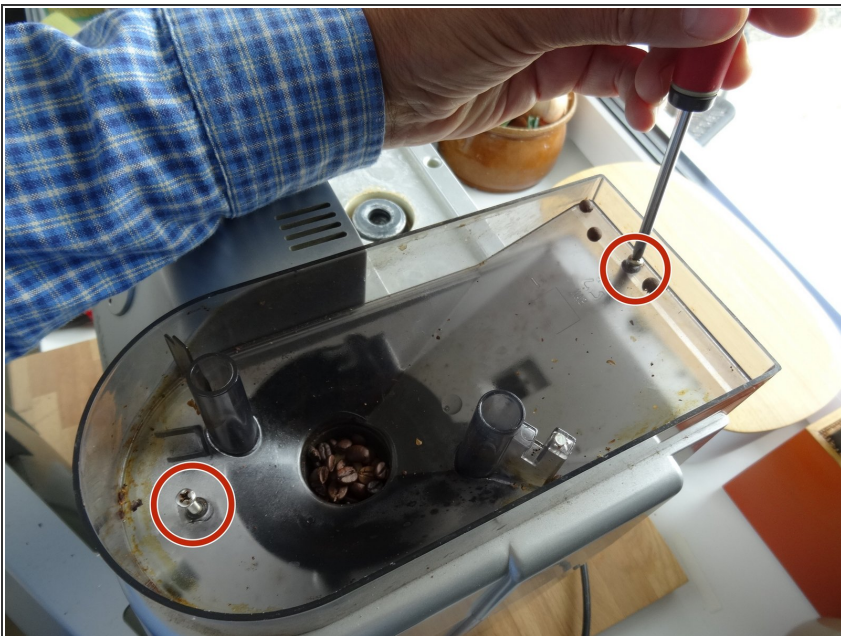
Step 1 — Removing Saeco Vienna Sup 018 Top Cover



⚠ Never forget: Pull the plug out!

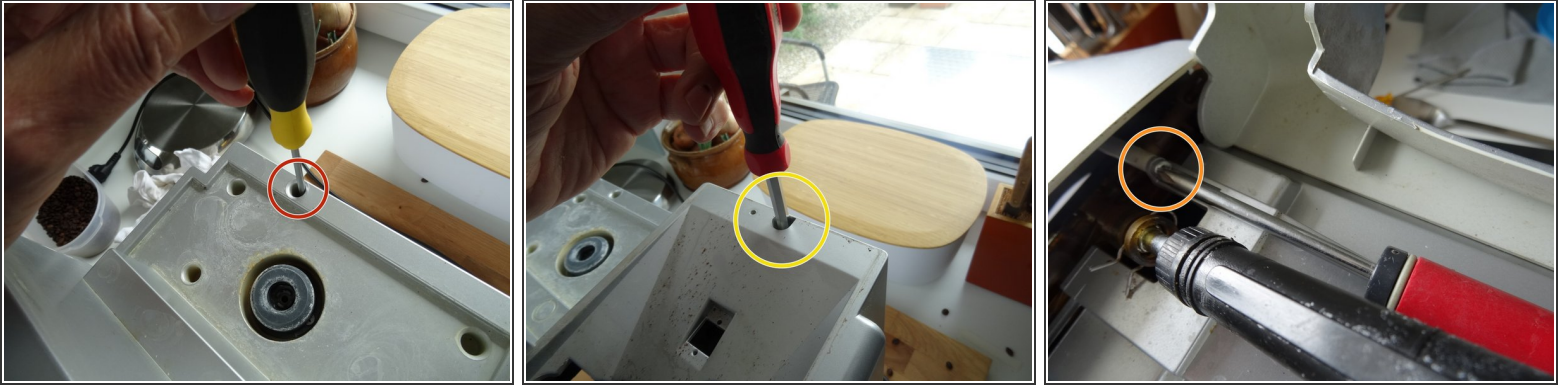
- Remove all attachments such as drawers, water tank, brewing unit.
- Carefully pull the steam button out. If it is too tight, first loosen the cover (steps 2 to 4), lift slightly and then push the ratchet nose with a small screwdriver.

Step 2



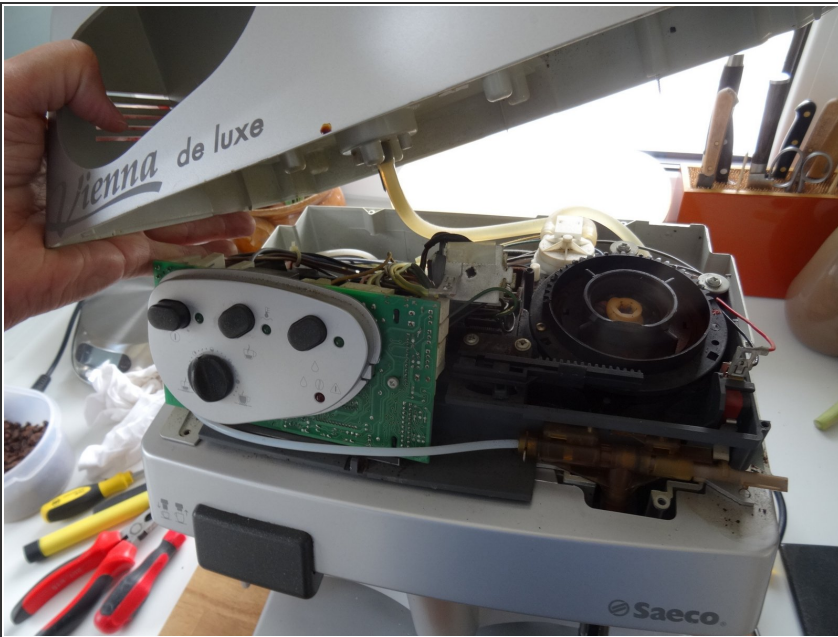
- The bean container is fixed with two Phillipps screws. Unscrew those.
- ⓘ The adjusters of the grinder and the quantity of coffee (if present) can remain.
- Lift the bean container up und remove it from the device.

Step 3



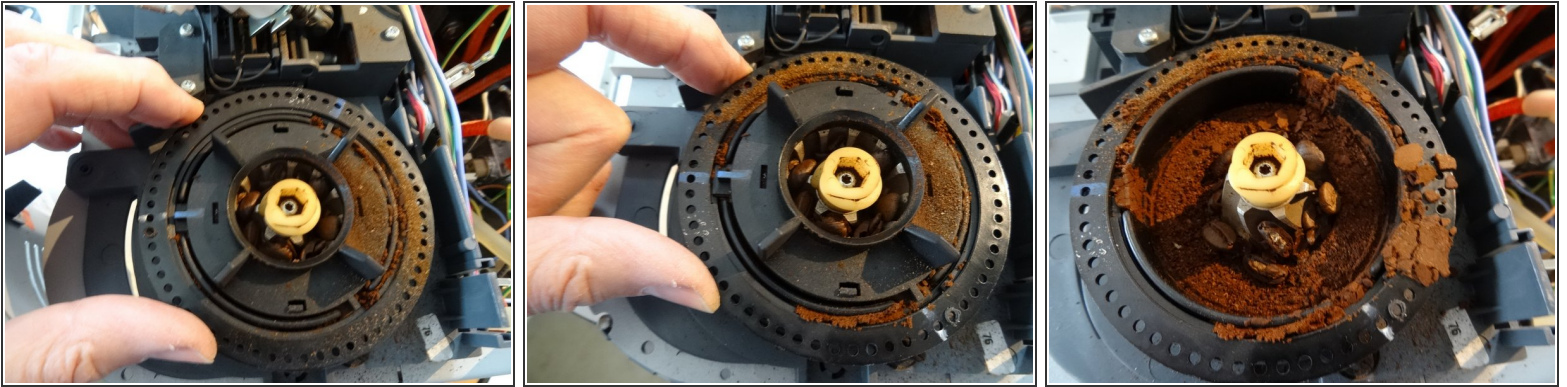
- Remove the single T10 Torx screw on the rear edge of the top cover under the water reservoir.
- Remove the single Phillips screw on the rear edge of the top cover under the container of the coffee beans.
- There are two Phillips screws on the frontal underside edge of the top cover. Turn them out.

Step 4



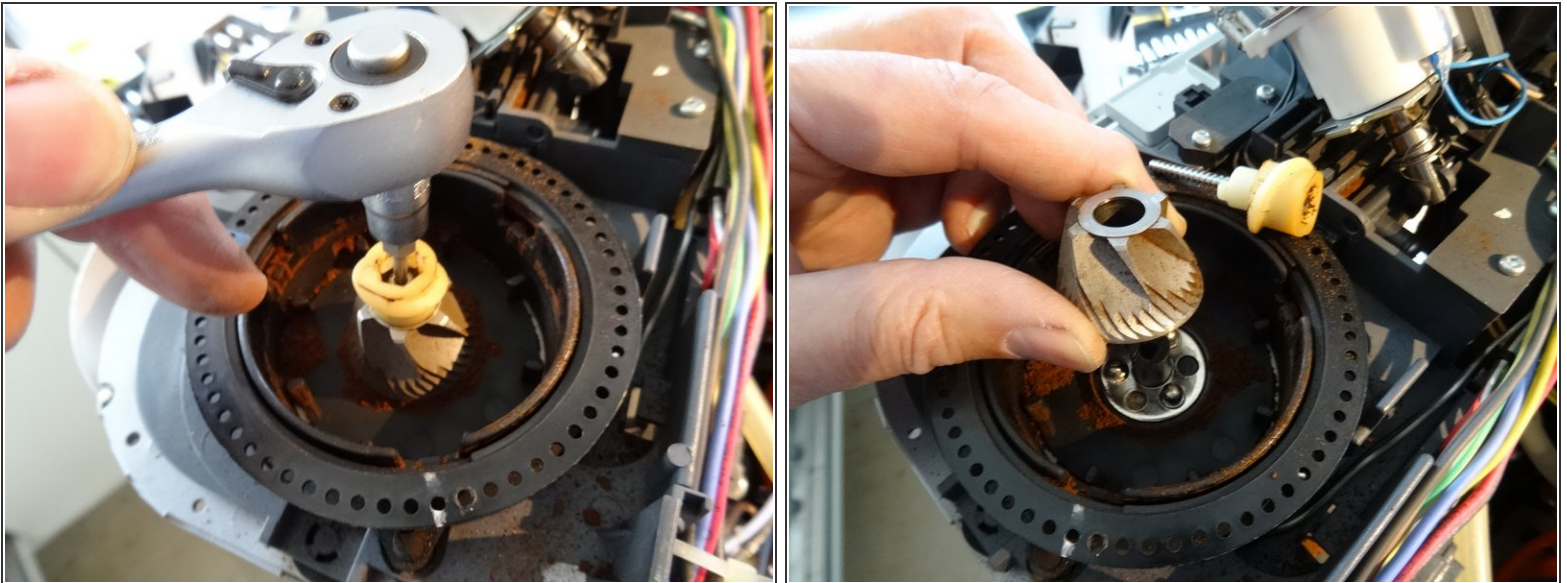
- Now the cover can be lifted off. Pull backwards, then diagonally forward. Remove the silicone hose from the water tank.


Step 5 — Removal of grinding ring



- Note the blue markings. Turn the outer ring anti clockwise until the blue marks line up to each other.
- Then the ring can be lifted off. Siphon off all ground coffee immediately.

Step 6 — The grinding cone



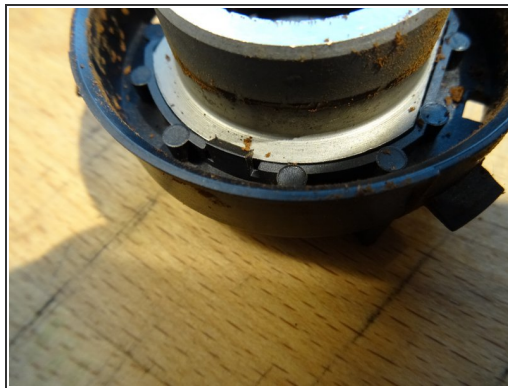
-  The Phillips screw, which holds the milling cone has a left-hand thread, so "wrong turn" turn! The screw is often hidden under parts of coffee beans.
- After loosening the screw you can first lift the auger, then carefully the grinding cone. You can see the three balls of the slip clutch. Carefully lift out and keep safely.

Step 7 — Clean



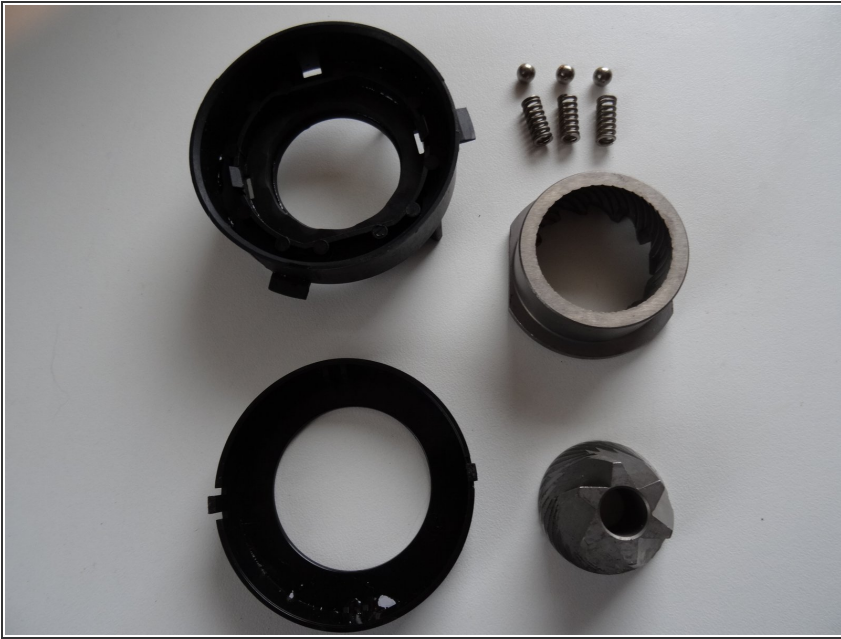
- The driver can be pulled up. Pay attention to the three springs on which the balls of the slip clutch lie, these also safe to store.
- All parts are thoroughly cleaned and degreased.

Step 8 — Replace grinding ring



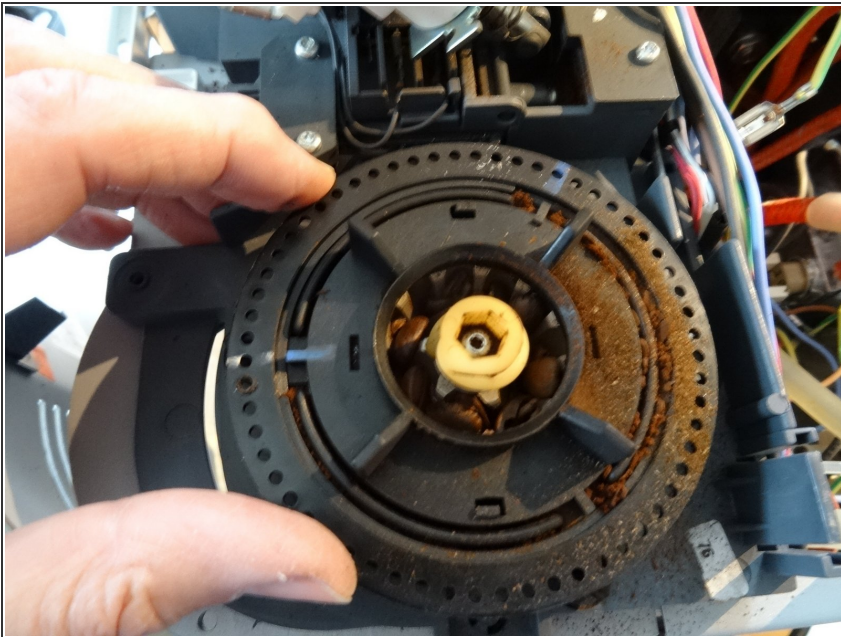
- The cap of the grinding ring can be removed by pushing the small notches alternately left and right with a screwdriver.
- The grinding ring is fastened with clamps. Press with the screwdriver to the side, then the Mahlring can be solved.
- Again, everything is cleaned well, then pressed the new ring and the lid put on.

Step 9 — Exchange cones



- Here are all parts.
- The driver is reinstated. Then the three feathers and beads inserted. When adjusting the new grinding cone, make sure that the balls are in the recesses on the bottom.
- Then insert the auger so that it engages correctly in the grooves.
- Finally, insert the central bolt, push the cone down slightly and tighten the bolt. Reminder: left-hand thread, that is "falschrum".

Step 10 — To adjust



- ⓘ Note: The thread of the adjusting ring should be well clear of flour dust, this can be achieved by screwing and unscrewing.
- The mounted grinding ring is inserted. At first, the markers face each other. The outer ring is turned on until a resistance can be felt. So the millstones sit on each other.

-
- Then he is turned back about 15 stops. This is about the middle setting of the degree of grinding, but can also be fine-tuned later.
-

Repeat the steps in the reverse order to re-mount the unit.