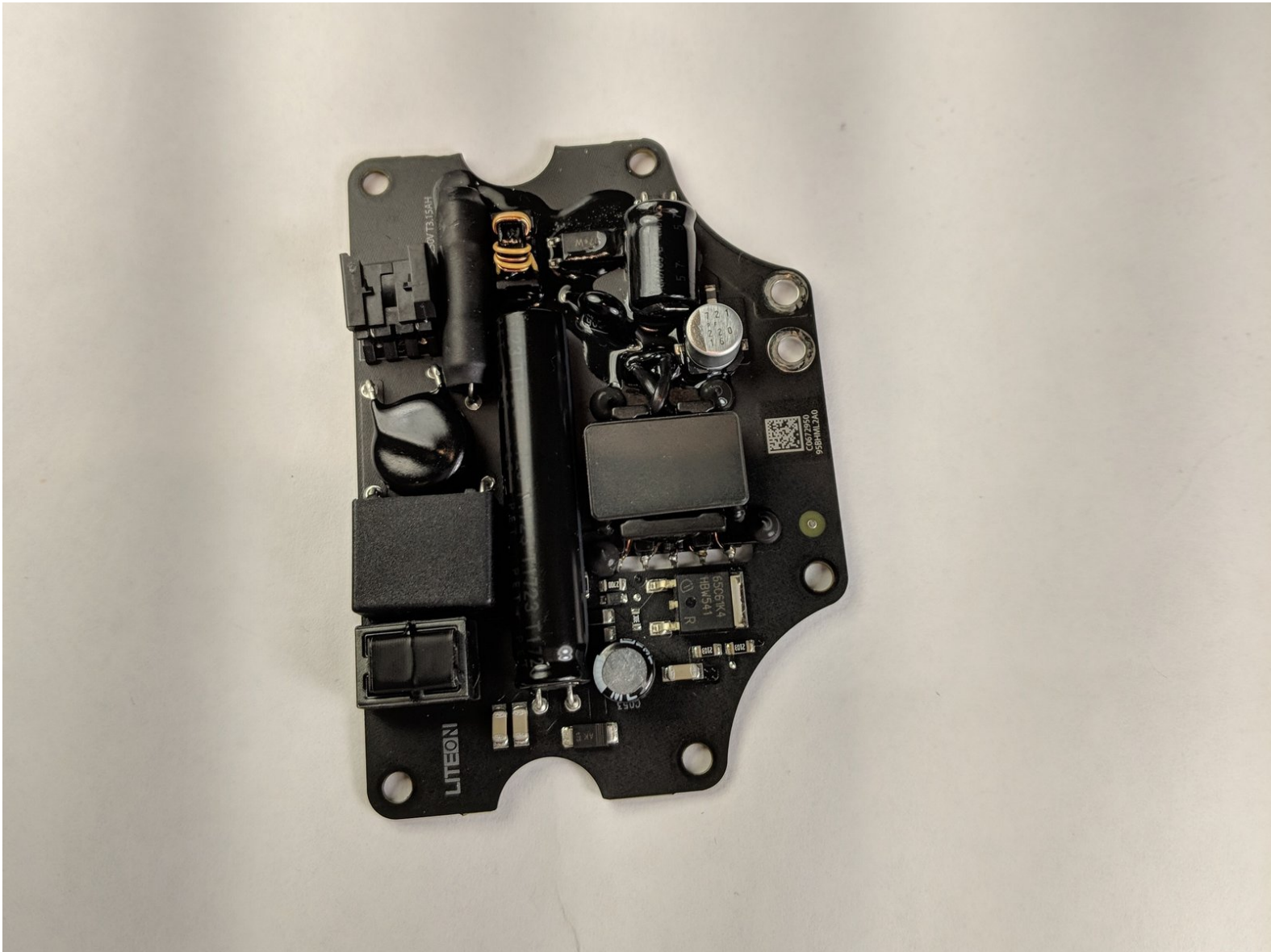




Apple TV 4K Power Supply Replacement

In this guide we will disassemble and remove...

Written By: Brian Gehring



INTRODUCTION

In this guide we will disassemble and remove the power supply from an Apple TV 4K

TOOLS:

- [Spudger](#) (1)
 - [T6 Torx Screwdriver](#) (1)
 - [TR7 Torx Security Screwdriver](#) (1)
-

Step 1 — Logic Board



- Use a spudger to pry the bottom panel off from the body. It is held on with clips on the inside, so you will need to make sure those are undone while opening.
- ⓘ The panel is held onto the device tightly, so you may need to be a bit forceful to remove it.

Step 2



- Remove the following screws using a T6 Torx screwdriver holding the heat sink assembly in.
 - Four 10 mm screws
- Lift and remove the heat sink assembly from the device.

Step 3



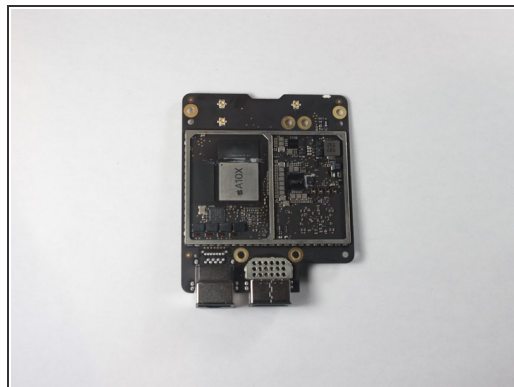
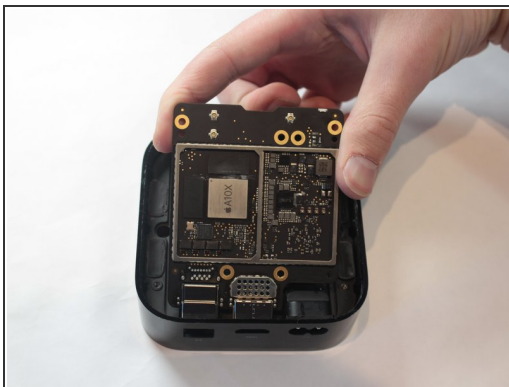
- Use plastic spudger to pull up on all three antenna connectors to remove them.
- Remove rubber piece from front side of device.

Step 4



- Unscrew the following screws holding the logic board in place using the T7 Torx:
 - Two black 3 mm screws
 - Two silver 4 mm screws

Step 5



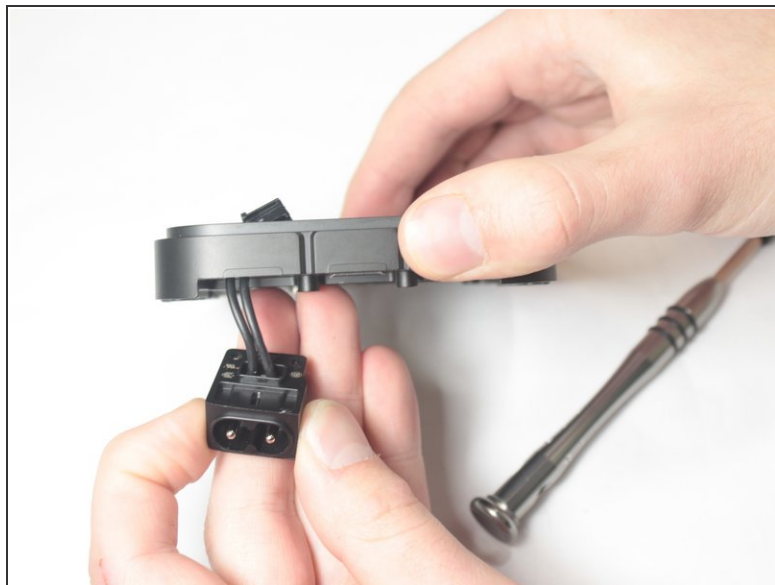
- Use a spudger to pry up logic board. Try lifting it up from the front side.
- Remove logic board and set aside.

Step 6 — Power Supply



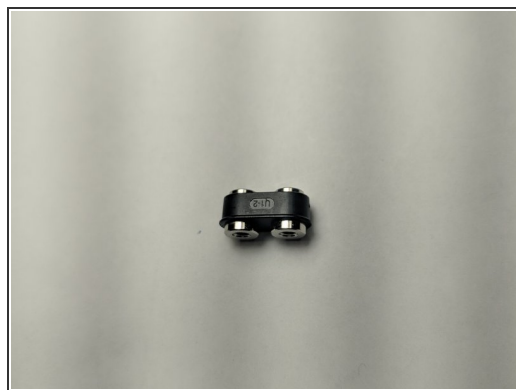
- Use a T7 Torx to remove the screws:
 - Five 5mm screws
- Carefully flip the device upside down to remove the logic board/power supply mount.

Step 7



- Undo the latch connecting the power connector to the power supply.
- Feed the wire through the logic board/power supply mount.

Step 8



- Using a T-7 Torx unscrew the two silver screws.
 - Two 4mm silver screws
- ⓘ The power connector piece on the other side will now be free and fall out.

Step 9



- Use a screwdriver with a T-7 Torx bit to remove the following screws:
 - Five black 3mm screws
- lift the power supply out of it's mount.

Step 10



- Use a T6 Torx to remove the two screws holding the power supply connector in place. Pull the power connector away from the case.
- Two 3mm screws

To reassemble your device, follow these instructions in reverse order.