



# BLU WIN HD LTE Battery Replacement

How to replace the battery of the BLU WIN HD LTE.

Written By: Taelar Tritton-Bowman



---

## INTRODUCTION

The battery is what powers the device. The battery is secured by a sticky adhesive label and glue so be cautious when removing.



### TOOLS:

- [JIS #00 Screwdriver](#) (1)
  - [Spudger](#) (1)
-

## Step 1 — Back Case



- Pry the back cover from the bottom of the phone, pulling outwards and upwards.

## Step 2



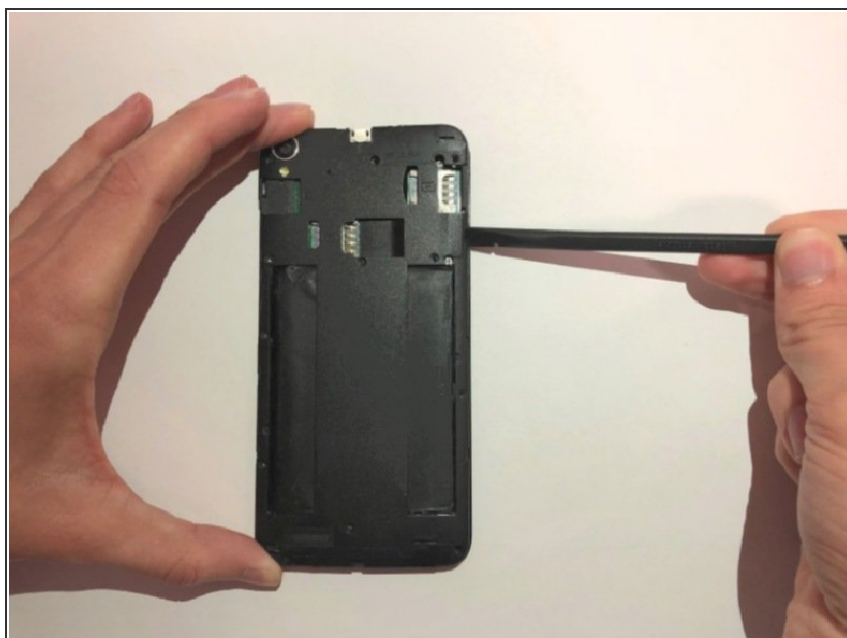
- Fully remove the cover and set aside in a safe place.

### Step 3 — Frame Cover



- Remove all the nine 2mm screws using the JIS #00 Screwdriver.

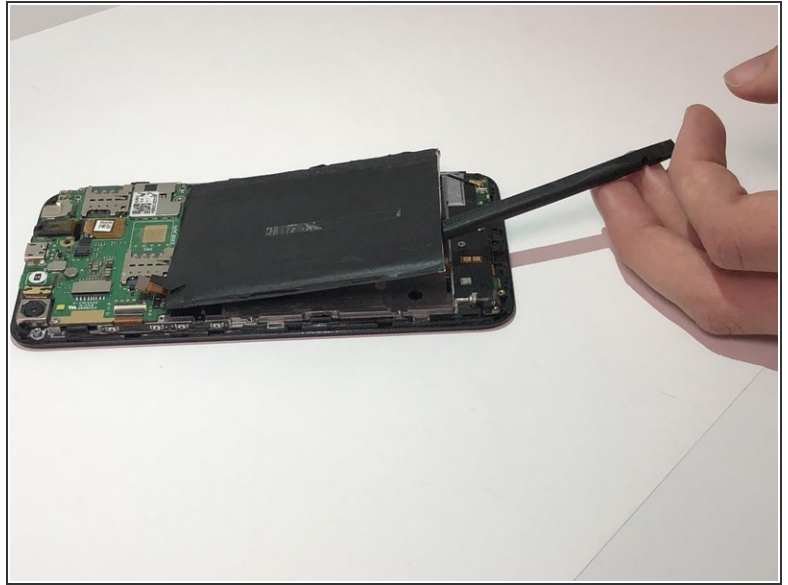
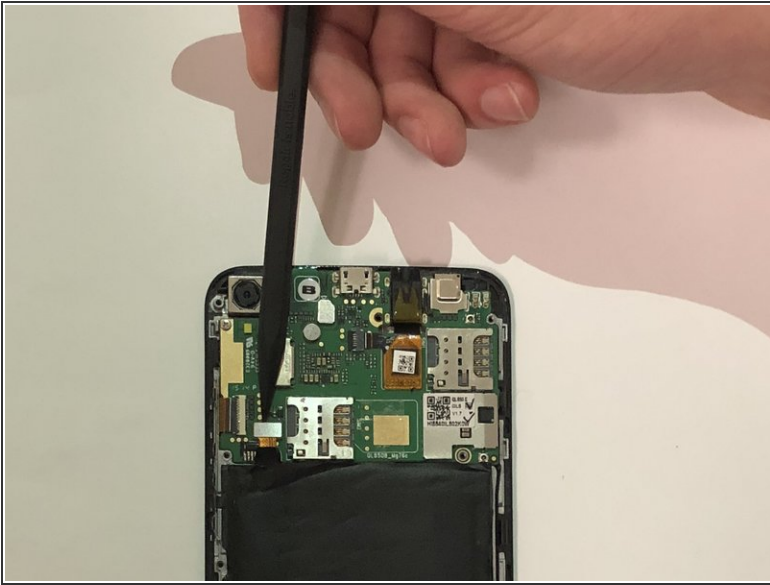
### Step 4



- Pry the frame off using the spudger pulling upwards going to different areas around the device.
- ⓘ The back cover is secured by glue. Removal could be more difficult than expected.



## Step 5 — Battery



- Remove the battery out using the black nylon spudger.
- ⓘ Battery is secured by glue so use more force to take it out.

To reassemble your device, follow these instructions in reverse order.