



Jura Impressa S model backpanel

If you want to gain access to inner parts (e.g....

Written By: VauWeh



INTRODUCTION

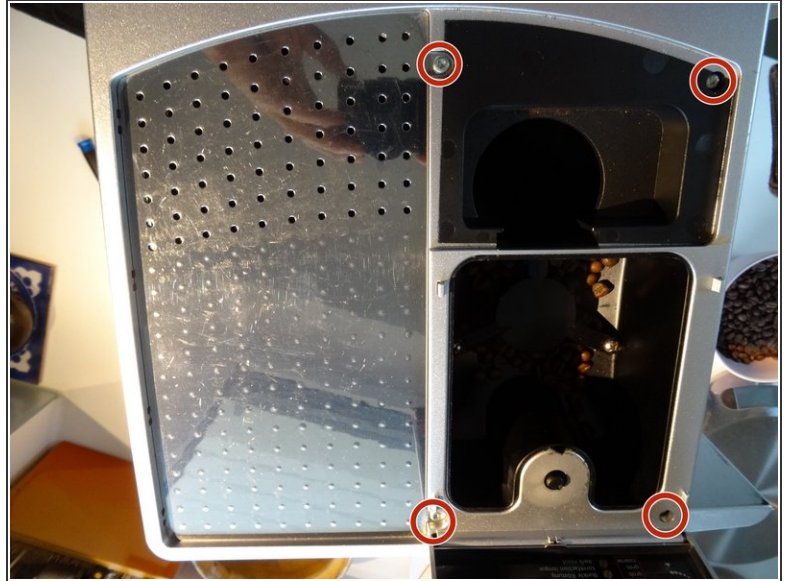
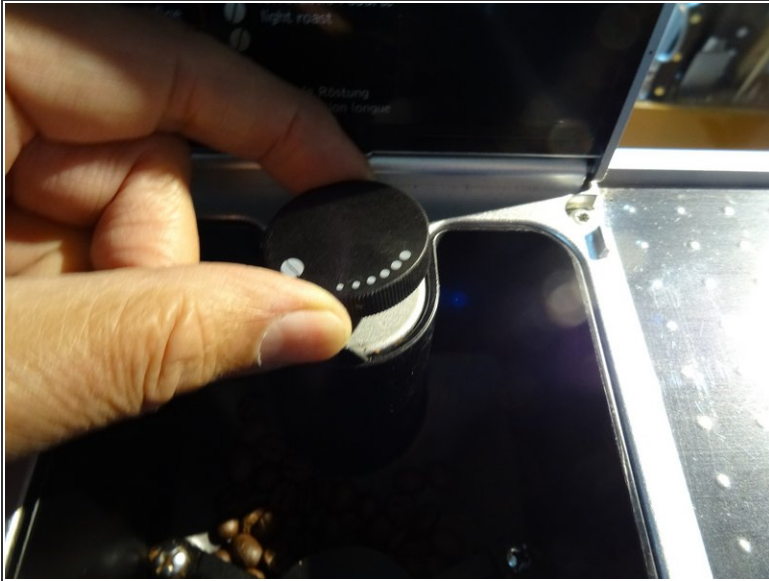
If you want to gain access to inner parts (e.g. pump or heater), you have to remove the backpanel. It is secured by two proprietary screws with oval head.



TOOLS:

- [T15 Torx Screwdriver](#) (1)
 - [Oval Drive Bit](#) (1)
-

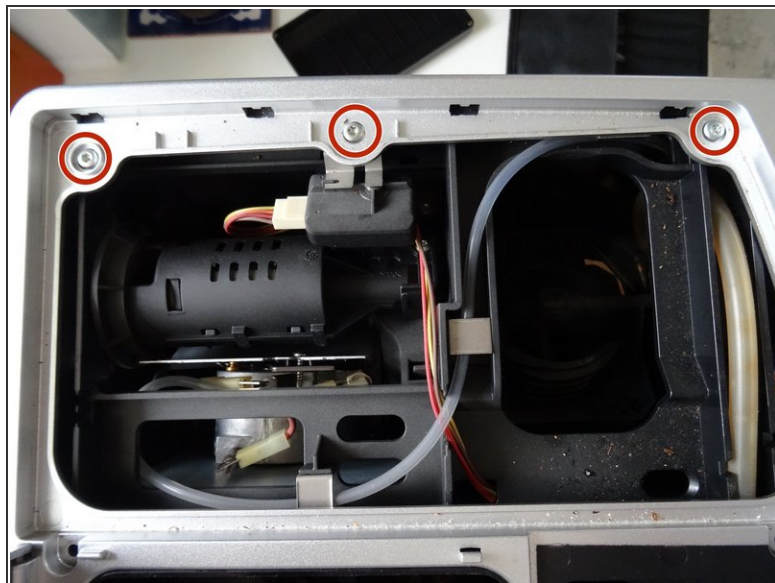
Step 1 — How to open a Jura Impressa S model cover



⚠ Always remove the power cord from the wall outlet.

- Lift out the coffee tray
- Remove the lid sealing the coffee bean container
- Remove all of the coffee beans you can possibly remove.
- Pull the adjuster of the coffee bean grinder straight up
- Remove the four T15 Torx screws

Step 2



- Remove the cup heat plate.
 - ⓘ It can be opened like a book.
- Below the cup heat plate there are three more T15 Torx screws. Remove them.

Step 3



- The top cover is now free. Lift ´er up and set ´er aside.

Step 4 — Jura Impressa S model backpanel



- The backpanel is secured with two proprietary screws with oval head. They seem to be rivets, but in fact are screws. The only purpose is, to keep us out of our own devices. You can remove them using an oval drive bit. (Part of some iFixit tool collections or available at a Jura provider or [iFixit](#)). In a pinch try needle nose pliers. [Here a DIY guide.](#)
- Remove the two oval head screws on the lower edge of the backpanel.
- Lift the panel up.

To reassemble your device, follow these instructions in reverse order.