



# Jura Impressa S model front cover

The front cover must be removed to get access...

Written By: VauWeh



---

## INTRODUCTION

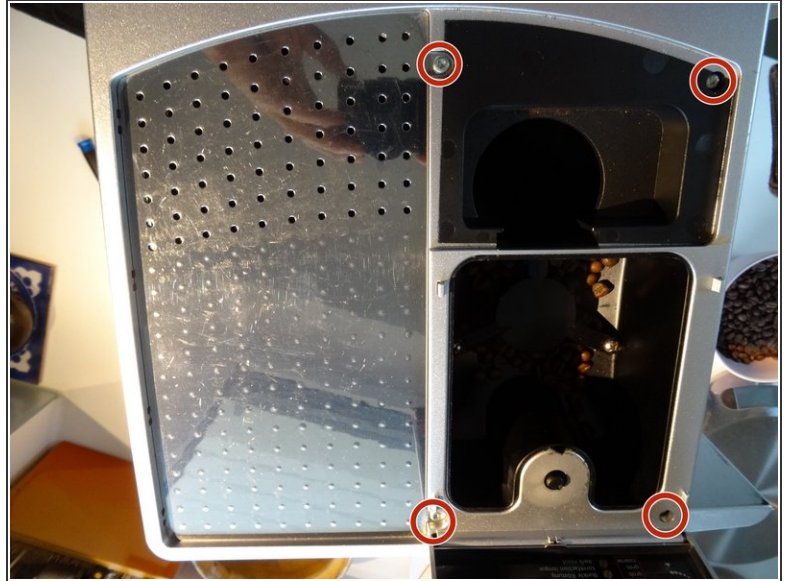
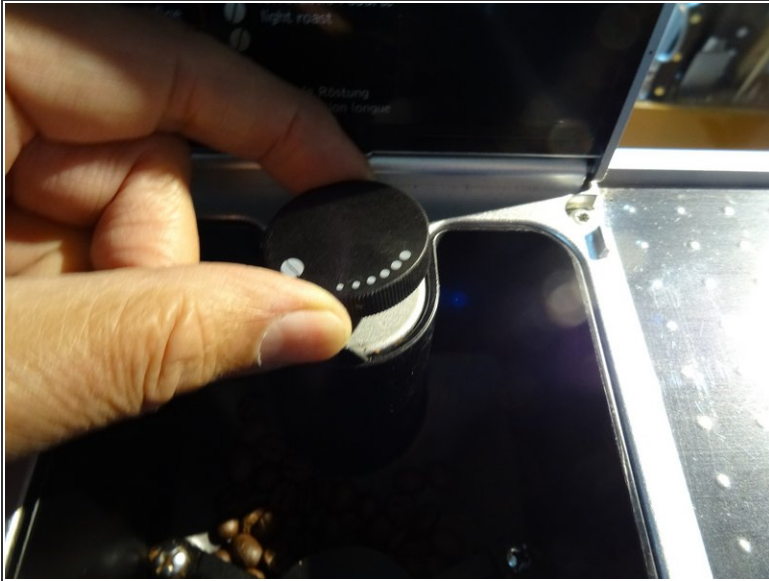
The front cover must be removed to get access to the internal components such as the brew group and the steam valve.

---

### TOOLS:

- [T15 Torx Screwdriver](#) (1)
-

## Step 1 — How to open a Jura Impressa S model cover

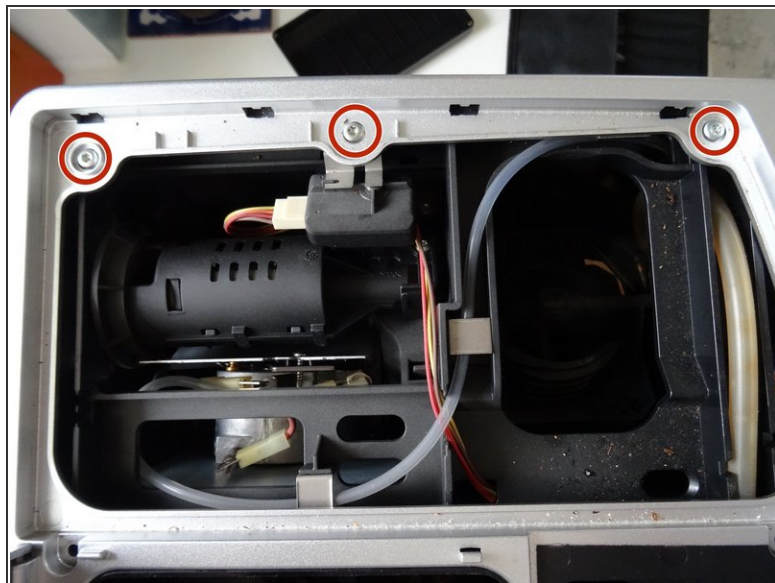


**⚠ Always remove the power cord from the wall outlet.**

- Lift out the coffee tray
- Remove the lid sealing the coffee bean container
- Remove all of the coffee beans you can possibly remove.
- Pull the adjuster of the coffee bean grinder straight up
- Remove the four T15 Torx screws



## Step 2



- Remove the cup heat plate.
  - ⓘ It can be opened like a book.
- Below the cup heat plate there are three more T15 Torx screws. Remove them.

## Step 3



- The top cover is now free. Lift ´er up and set ´er aside.

## Step 4 — Jura Impressa S model front cover



- Remove the knob for the steam valve by simply pulling it off.
- The front cover is secured with a Torx T15 screw. Remove it.

## Step 5



- Now the front cover can be opened like a door for a few inches. The hinge is on the left.

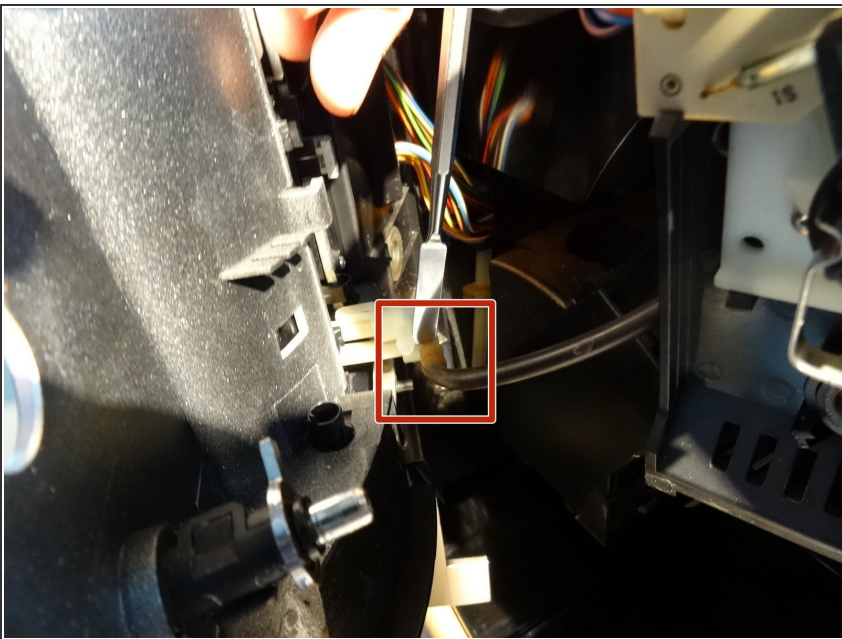


## Step 6



- ❗ Various hoses hinder the further opening of the front cover. You need to remove the steam valve keypad from the cover.
- Use a spudger to lift the two notches at the top of the front cover a bit to release the keypad at the top.
- Lift the keypad upwards and pull it to the back. The steam pipe will slide out from its connection.
- ❗ All hoses can remain connected.

## Step 7



- Remove the silicone hose leading from the steam valve to the coffee spout. If it is secured with a cable tie which must be removed first.
- The front cover is now free and can be opened.

To reassemble your device, follow these instructions in reverse order