



Samsung Galaxy Tab E 8.0 Screen Replacement

The screen of the Samsung Galaxy Tab E 8.0 may...

Written By: Christian Bloemhof



INTRODUCTION

The screen of the Samsung Galaxy Tab E 8.0 may become damaged if the device is dropped or struck by a hard object. This guide shows how to replace the tablet's screen, which is attached to the front panel.

TOOLS:

[JIS #00 Screwdriver](#) (1)

[iFixit Opening Tool](#) (1)

[Tweezers](#) (1)

[Metal Spudger](#) (1)

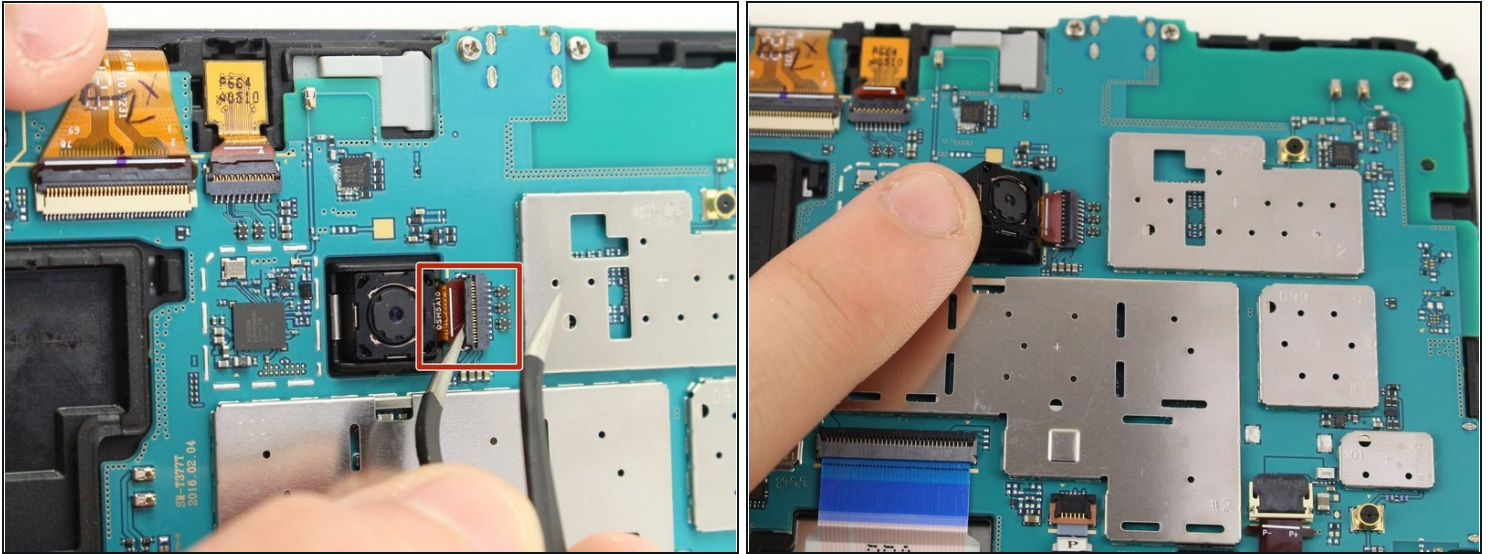
Step 1 — Back Panel



- Use the iFixit Opening Tool to pry off the back case, moving the tool around the screen.

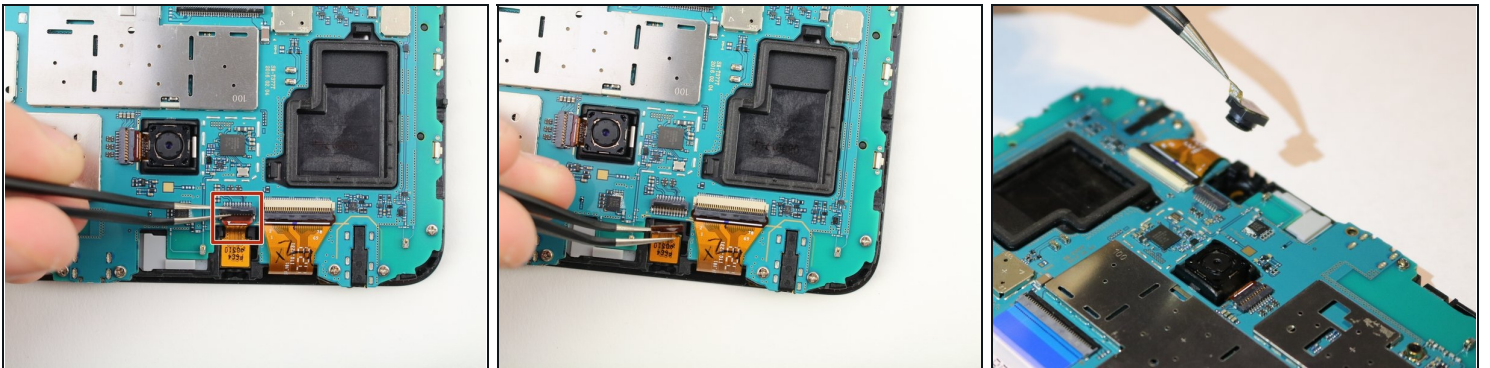
 Make sure the device is off and the SD card is removed before taking off the back casing.

Step 2 — Back Camera



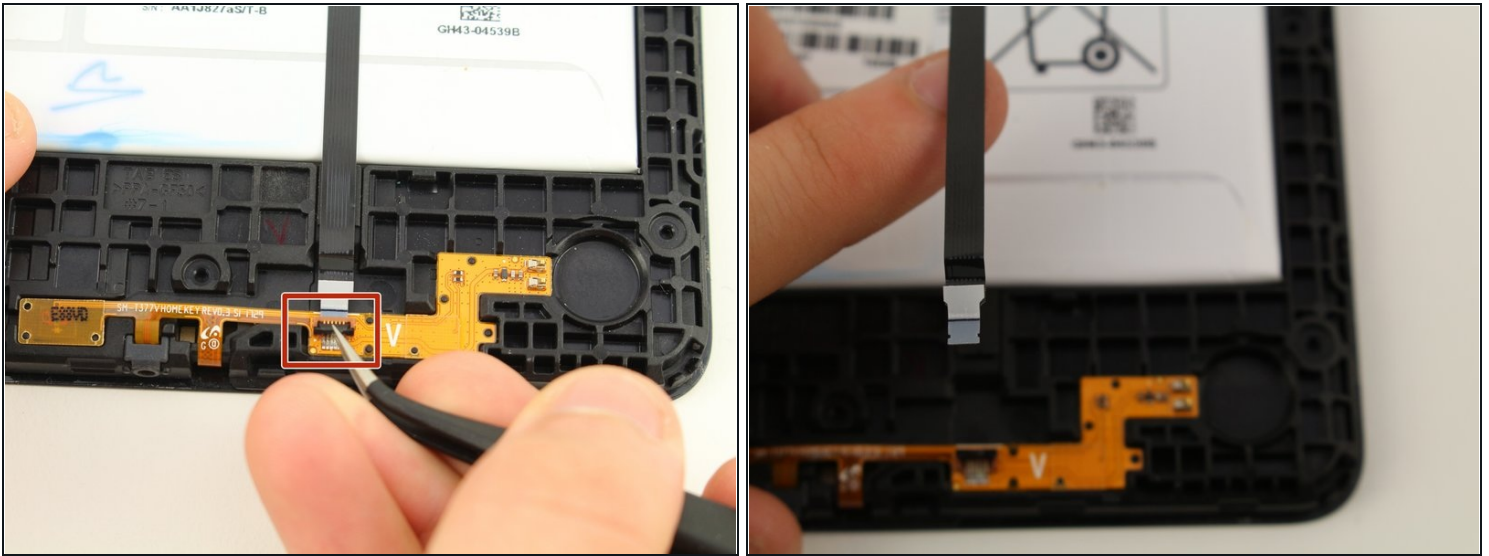
- Use the [tweezers](#) to lift the switch connecting the back camera to the motherboard.
- Use your hand to remove the back camera from the motherboard.

Step 3 — Front Camera



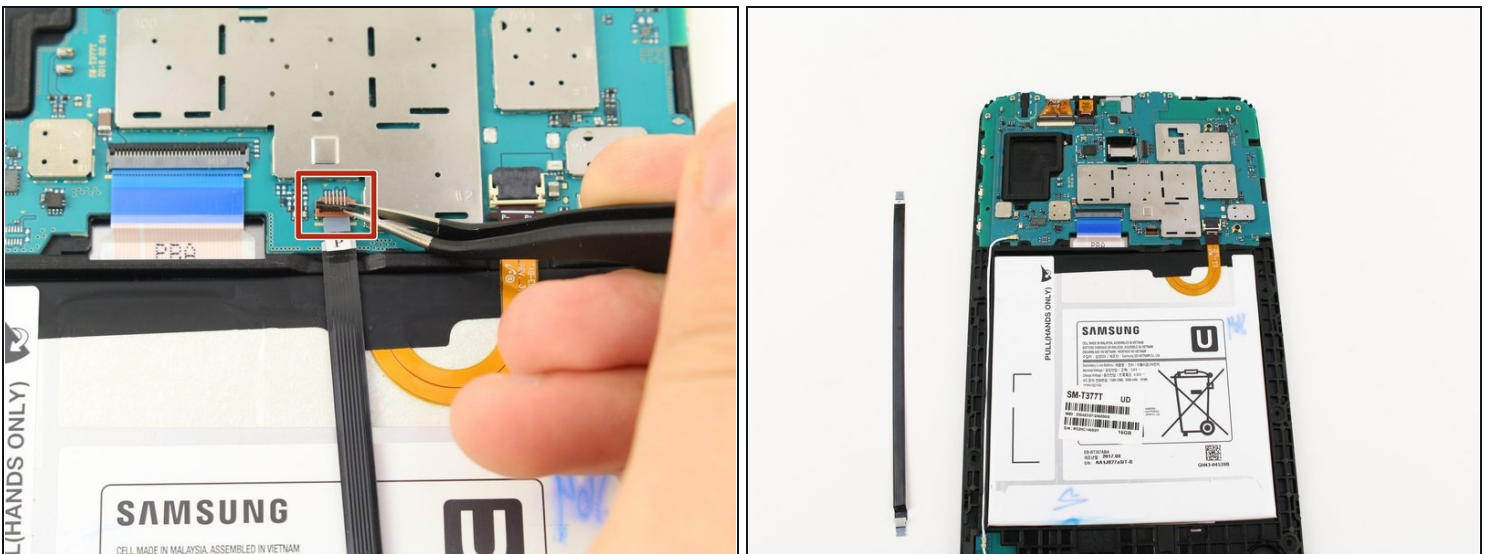
- Use the [tweezers](#) to lift the switch connecting the front camera to the motherboard.
- Remove the front camera from the motherboard by lifting with the tweezers.

Step 4 — Motherboard



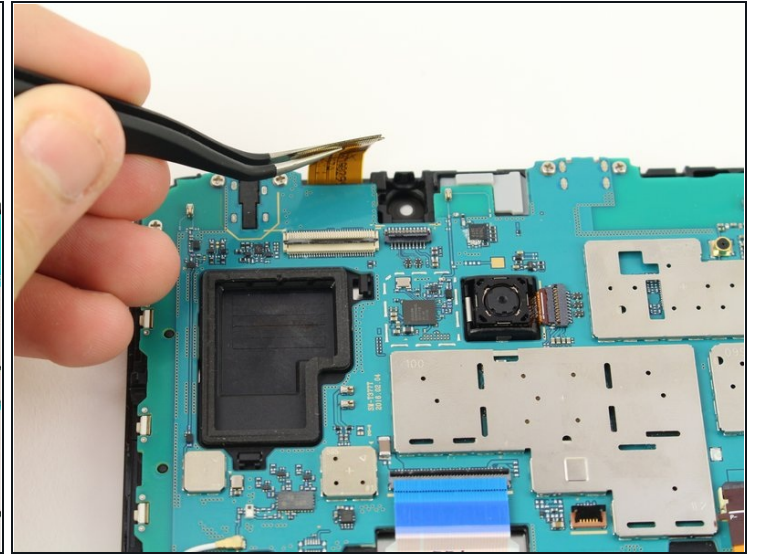
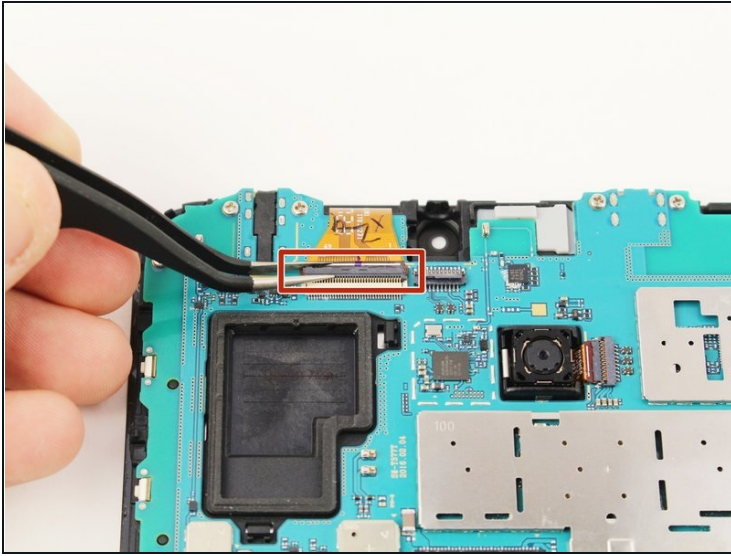
- Use the [tweezers](#) to flip the switch on the bottom of the strap that goes over the battery.
- Release the strap from the switch by lifting the strap with your hand.

Step 5



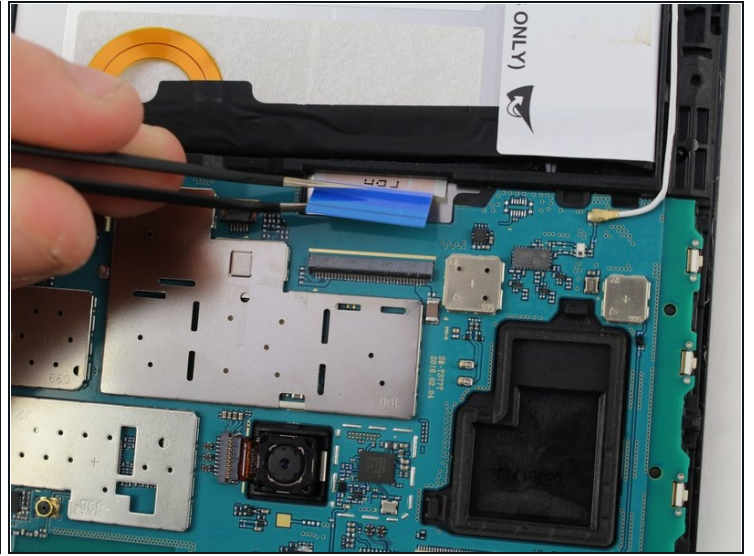
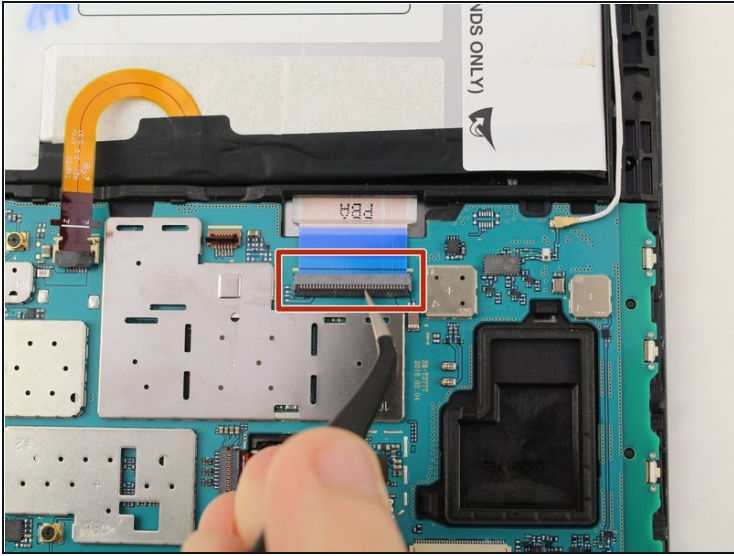
- Use the tweezers to flip the switch that connects the top of the strap to the motherboard.
- Lift the top end of the strap with your hand and remove the strap completely from the device.

Step 6



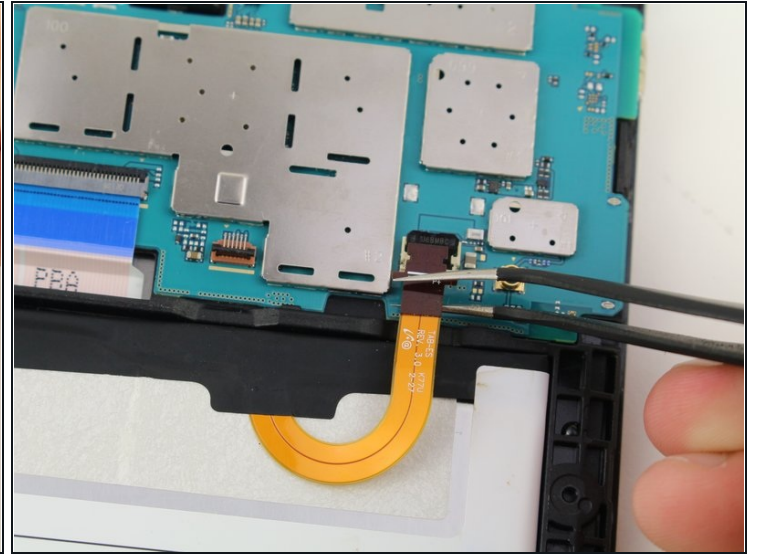
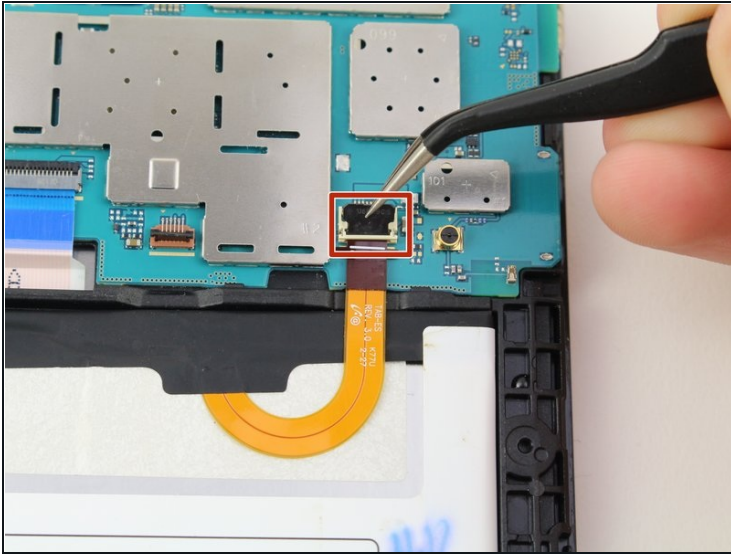
- Use the tweezers to flip the switch of the connector.
 - Lift the connector from the motherboard.
- ⓘ This connector does not come completely off, but disconnects from the motherboard.

Step 7



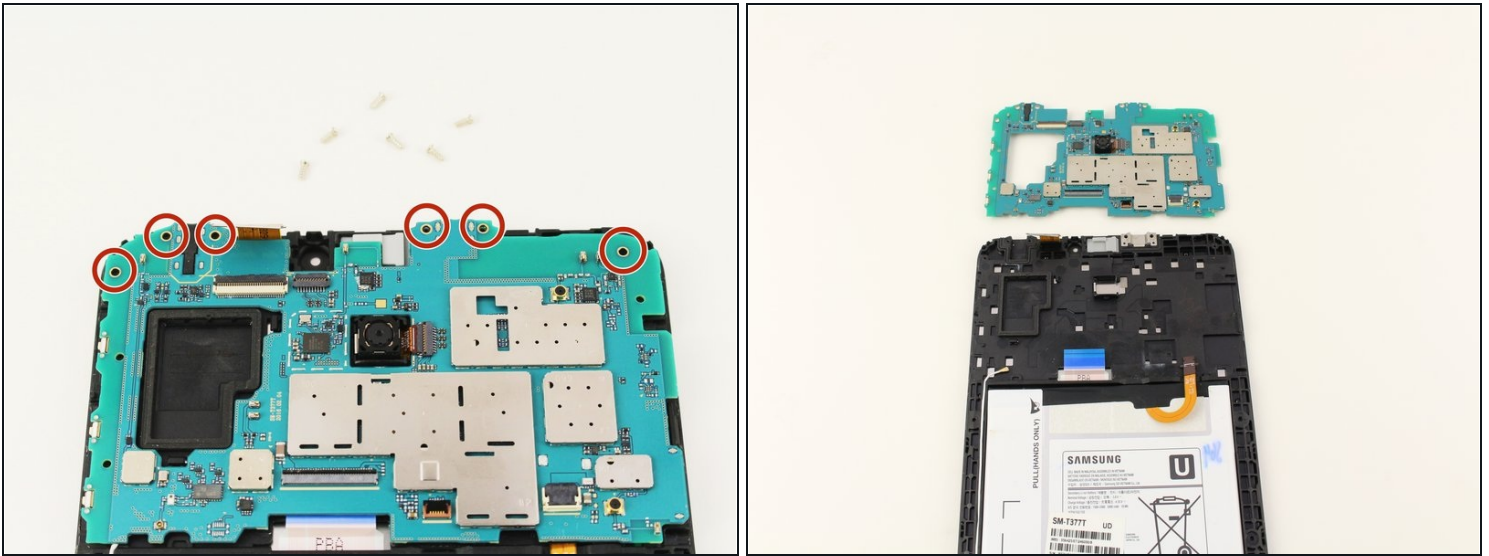
- Use the tweezers to flip the switch of the blue connector on the motherboard.
- Lift the connector from the motherboard.
- ① This switch can detach from the device, but just needs to disconnect from the motherboard.
- ① Ensure the blue ribbon cable is not under the motherboard upon reassembly.

Step 8



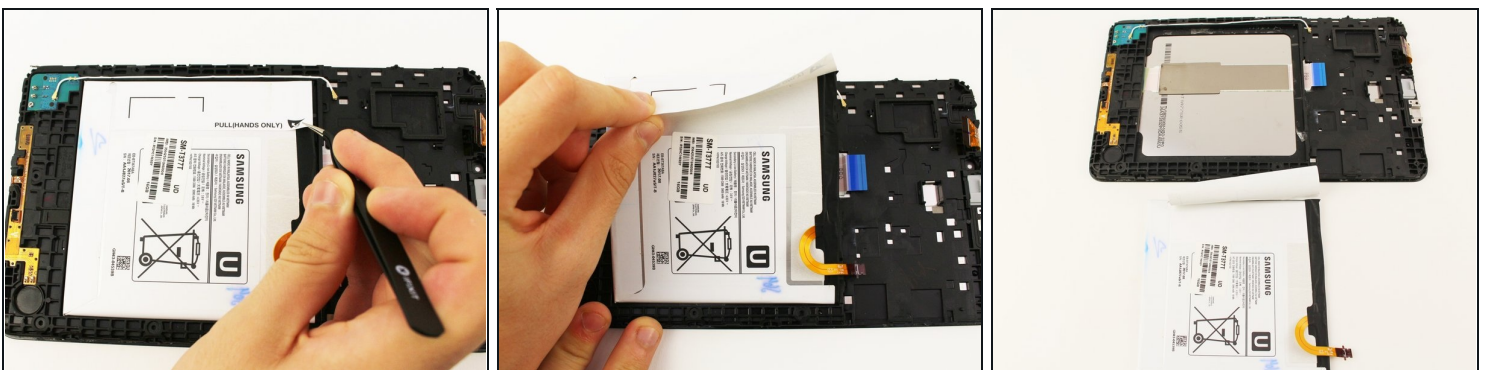
- Use the tweezers to flip the switch of the connector that runs from the battery to the motherboard.
- Lift the connector from the motherboard.
- ① This switch can detach from the device, but just needs to disconnect from the motherboard.

Step 9



- Use a JIS #00 screwdriver to remove the six 4.5mm screws at the top of the motherboard.
- Lift the motherboard with your hand to detach the motherboard from the device.

Step 10 — Battery



- Use the [tweezers](#) to lift the flap on the left end of the battery and pull up with your hand to remove the battery.
- ① The battery is held by an adhesive on the back, so it will take some force to remove.

Step 11 — Screen



- Use an iOpener or a heat gun/hair dryer to warm the outer 1/2 inch of the screen. It should be very warm but not too hot to touch or you may cause heat damage to components inside the device.
- Use the iFixit Opening Tool to get between the plastic screen and the device to pry off the screen.
- ⓘ The metal spudger may be needed to get between the screen.

⚠ The metal spudger may cause more damage to the screen if used with force.

Step 12



- Use the metal spudger to get between the device and the internal screen.
- Pry out the screen from the device.

To reassemble your device, follow these instructions in reverse order.