

# De Longhi Heater temperature Sensor

If your heater has a temperature sensor failure...

Written By: Smilzo



## INTRODUCTION

If your heater has a temperature sensor failure alarm proceed with component replacement or repair when possible.

ELECTRONIC BOARD WITH PROBE FOR DE LONGHI FAN HEATER TCH7091ER TCH7092ER

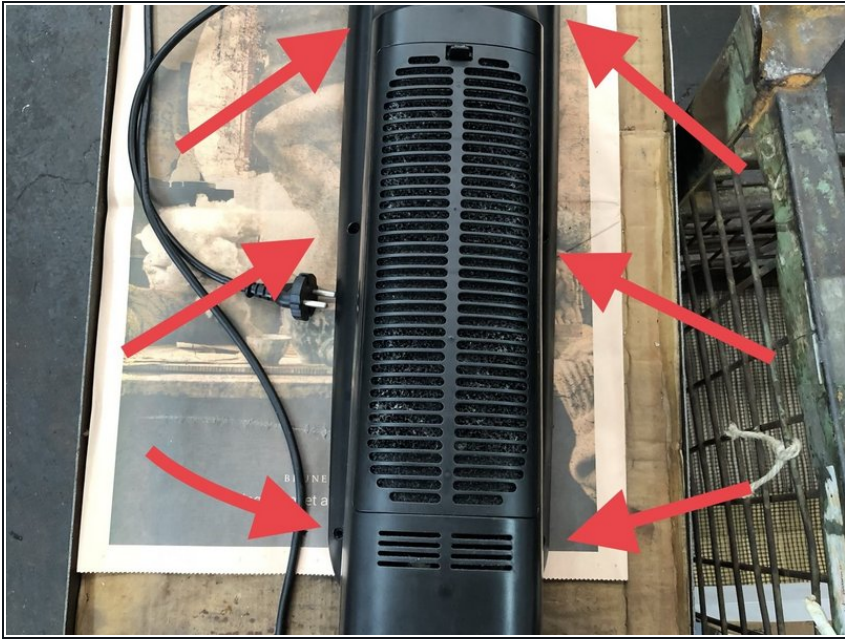
Replacement part available at [eBay](#)

### Step 1 — Temperature Sensor



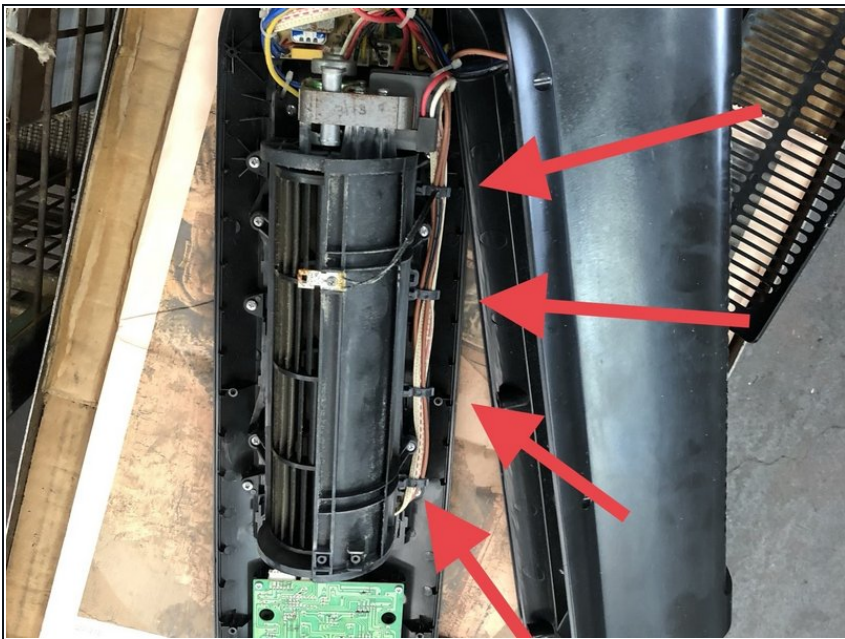
- Heater unit bricked with PF error (fault temperature sensor)

## Step 2



- Remove the four Phillips screws with a Phillips screwdriver
- Remove the remaining 2 screws with a Torx screwdriver
- Remove the cover

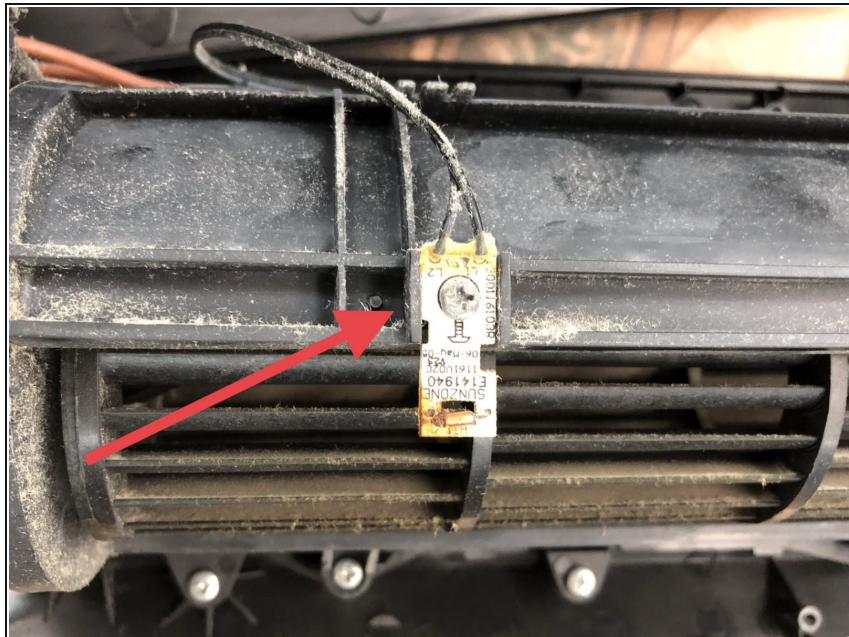
## Step 3



- Open the clamps by unhooking them with pliers or using a flathead screwdriver.

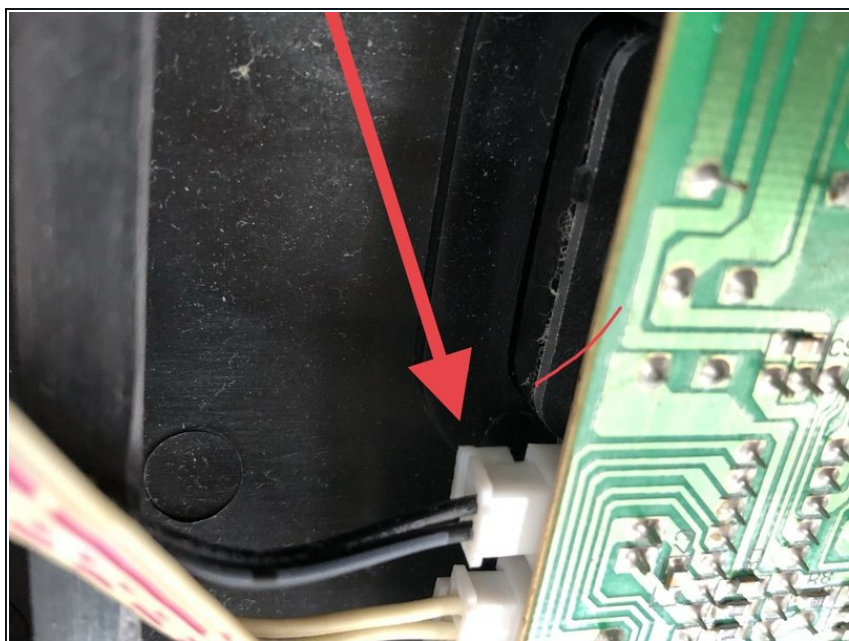


## Step 4



- Unscrew the Phillips screw to remove the temperature sensor.

## Step 5



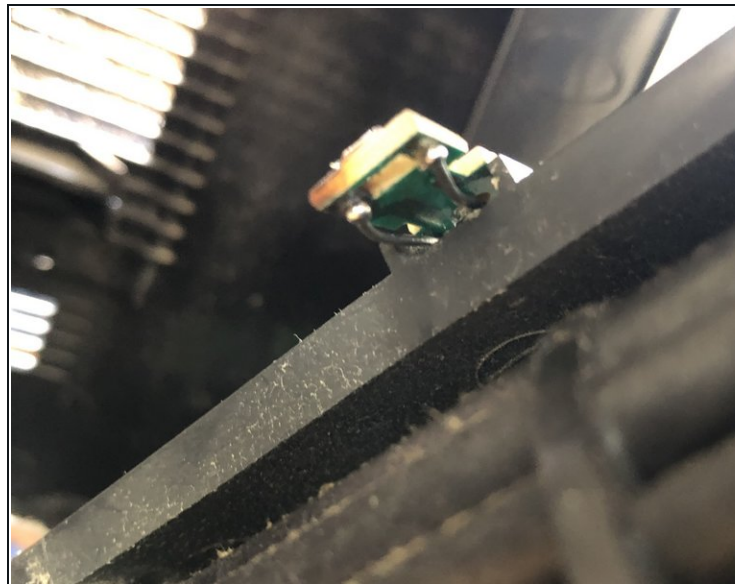
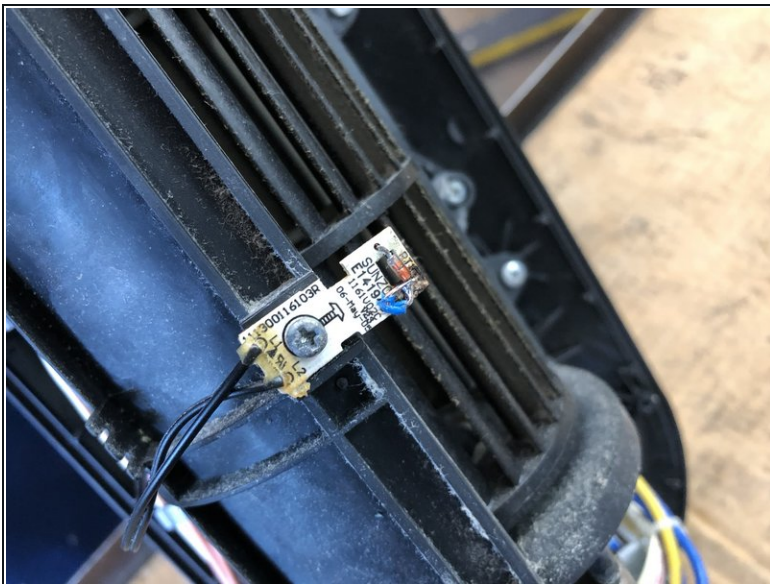
- Unclip the temperature sensor connector from the motherboard.

## Step 6



- The temperature sensor had broken because it was corroded by moisture.

## Step 7



- With a soldering iron I proceeded to weld the broken part and to connect the 2 tracks by applying electric wire and some tin.
- ❗ If the component can not be repaired, you can find the complete electronic board replacement on [eBay](https://www.eBay.com)

---

To reassemble your device, follow these instructions in reverse order.