



# Samsung Galaxy A3 (2017) Display Replacement

Use this guide to replace the display in your...

Written By: Dominik Schnabelrauch



# INTRODUCTION

Use this guide to replace the display in your Samsung Galaxy A3 (2017).

Opening the Samsung Galaxy A3 (2017) will **damage the waterproof sealing** on the device. If you do not replace the adhesive seals, your phone will **function normally**, but will **lose its water-protection**.

This guide instructs you to replace only the display while leaving the original frame, logic board, and battery in place. However, some replacement screens for this phone come pre-installed in a new frame (a.k.a. chassis), which requires a very different procedure—transplanting your phone's internals and installing a new battery. Make sure you have the correct part before starting this guide.

The process of separating the display from the frame usually destroys the display, so don't follow this guide unless you intend to replace the display.

You'll need **replacement adhesive** to reattach a new display and the back cover when reassembling the device.



## TOOLS:

[iOpener](#) (1)

[iFixit Opening Picks \(Set of 6\)](#) (1)

[Suction Handle](#) (1)

[Phillips #000 Screwdriver](#) (1)

[Tweezers](#) (1)

[Spudger](#) (1)

---

## Step 1 — Back cover replacement



- Power off your phone before beginning disassembly.
- [Use an iOpener](#) to loosen the adhesive beneath the back cover. Apply the iOpener for at least two minutes. You might want to repeat this step several times during the back cover removal.

⚠ The adhesive of the Samsung Galaxy A3 (2017) is very strong. A hair dryer, heat gun, or hot plate may also be used if you aren't able to open the device with the iOpener. Be careful not to overheat the phone—the AMOLED display and internal battery are both susceptible to heat damage.

## Step 2



- Use a small suction handle to create a gap at the bottom end of the Galaxy A3.
- Insert an opening pick and slide the tip to the bottom left corner to cut the adhesive.
- Leave the opening pick in the bottom left corner to prevent the adhesive from resealing.
- Insert a new opening pick and start to cut the adhesive towards the bottom left side of the phone.

## Step 3



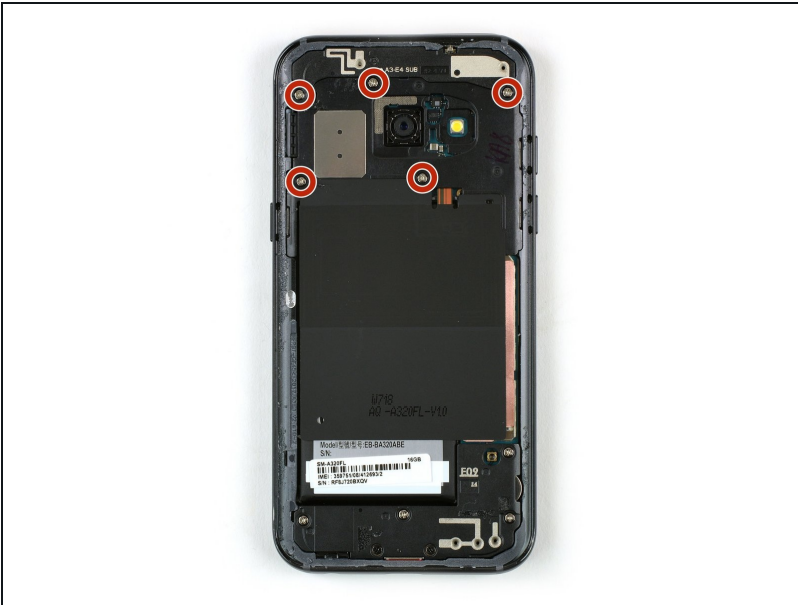
- Use an opening pick to cut the adhesive on all sides of the phone. Leave one opening pick in every corner to prevent the adhesive from resealing.  
**⚠ Reuse an iOpener if the adhesive becomes hard to cut. During the removal process the back cover is under tension all the time and is likely to break if the adhesive isn't loose enough.**
- Insert an opening pick on the right side of the phone after you cut the adhesive on all sides. Flip it sideways until you can get a good grip on the back cover.

## Step 4



- Remove the back cover from the phone.
- ✦ Before applying new adhesive remove any remaining adhesive from the back cover and the frame and clean the areas with isopropyl alcohol and a lint-free cloth.

## Step 5 — Motherboard cover including NFC antenna and loudspeaker replacement



- Remove the five Phillips #00 screws that hold the motherboard covers in their place.



## Step 6



- Use a pair of [tweezers](#) to remove the upper part of the motherboard cover.
- ① The cover is secured by small plastic clamps. Don't break them during the removal procedure.

## Step 7



- Use a pair of tweezers to lift up the motherboard cover including the loudspeaker and the NFC antenna and remove it.

## Step 8 — Battery Disconnect



- Use the flat end of a spudger to disconnect the battery flex connector.

## Step 9 — Display



- Use the flat end of a spudger to disconnect the display flex cable.

## Step 10



- [Prepare an iOpener](#) and apply it to the display for at least two minutes to loosen the adhesive beneath.
  - ⓘ You may need to reheat and reapply the iOpener several times to get the phone warm enough. Follow the iOpener instructions to avoid overheating.
  - ★ If your display glass is cracked, keep further breakage contained and prevent bodily harm during your repair by taping over the glass.
  - Lay overlapping strips of clear packing tape over the display until the whole face is covered.
  - This will keep glass shards contained and provide structural integrity when prying and lifting the display.
- ⚠ Wear safety glasses to protect your eyes from any glass shaken free during the repair.



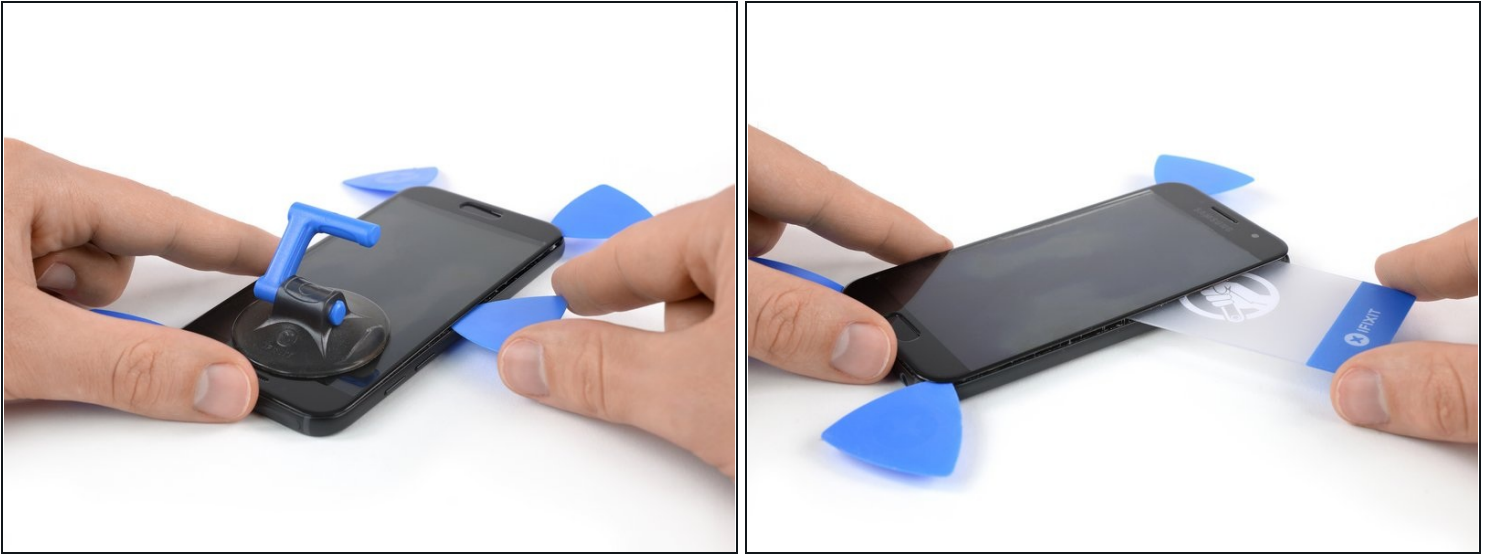
## Step 11



- Once the display is warm to the touch, apply a suction cup to the upper edge of the phone.
- Lift on the suction cup, and insert an opening pick under the display assembly.
- Start to slide the opening pick along the upper edge of the phone to cut the adhesive. Leave an opening pick at the corner to prevent the adhesive from resealing.
- Continue to cut the adhesive on the remaining sides of the phone and leave an opening pick in each corner.

**⚠ The home button and soft key cables are located beneath the bottom part of the display assembly. Only insert the tip of the opening pick.**

## Step 12



⚠ The screen's flex cable is located right behind the volume buttons, and may interfere with your cutting tool.

- After cutting the adhesive on all sides of the phone, insert a [plastic card](#) beneath the display assembly to loosen any remaining adhesive behind it.

## Step 13



⚠ Don't open the phone all the way yet. The display cable is still threaded through the mid frame and you might rip the cables of the home and menu buttons.

- Start to carefully lift the upper edge of the display assembly and thread the display flex cable through the mid frame.

⚠ Check if the home button or soft key button cables stick to the display assembly before you remove the display all the way.

- In case one of the cables sticks to the display, carefully peel them off with a pair of [tweezers](#) or an opening pick.
- Remove the display assembly from the phone.
- Before reassembling make sure to remove any remaining adhesive from the frame by using isopropyl alcohol (>97%) and a lint-free cloth or Q-tip.

---

If possible, turn on your phone and test your repair before installing new adhesive and resealing the phone.

After reapplying adhesive, follow these instructions in reverse order to reassemble your device.

The best way to secure the new screen is with a sheet of custom-cut double-sided tape. Apply the tape to the back of the screen, then carefully feed the display cable through the mid frame. Align the screen and press it into place.