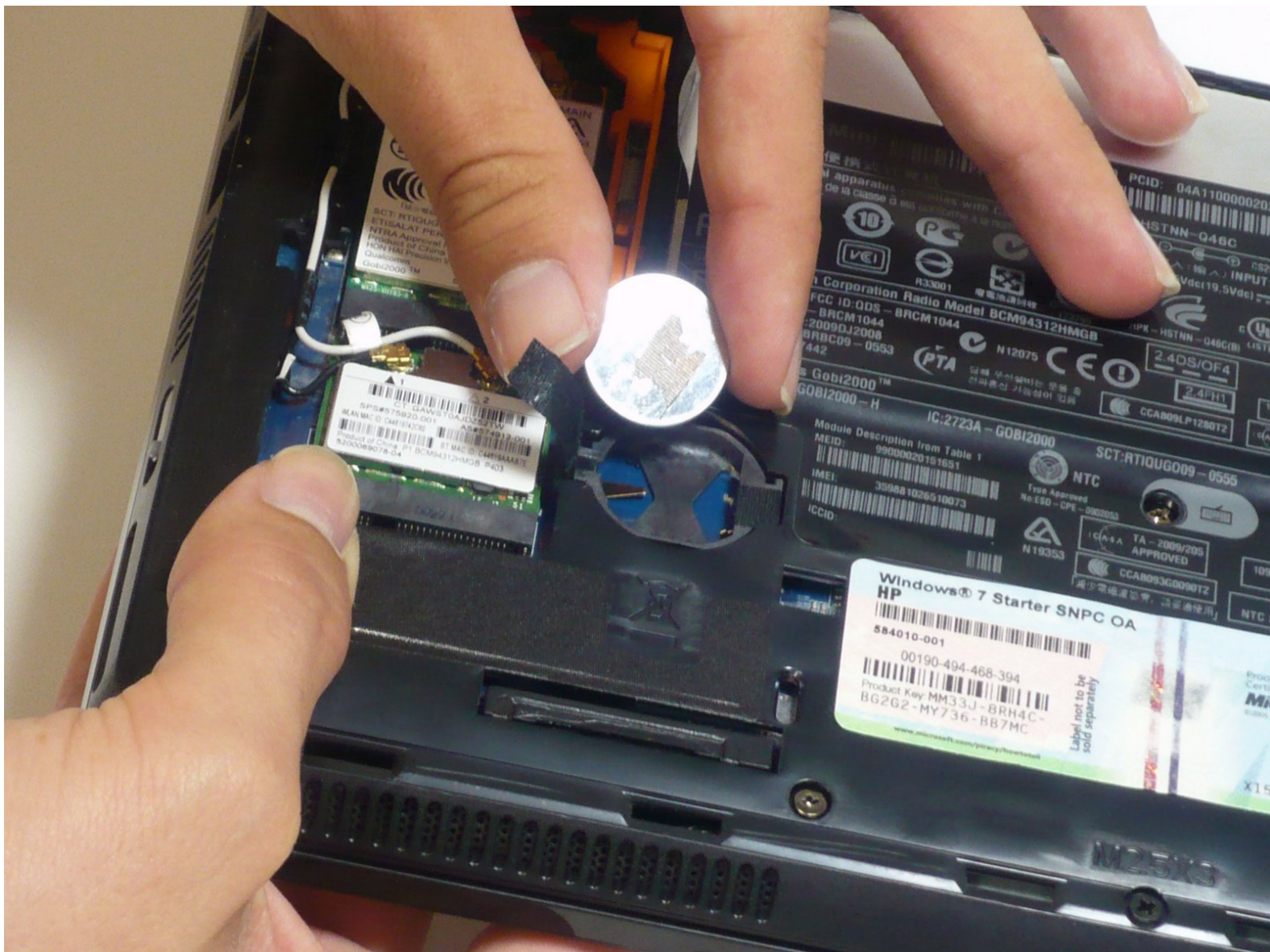




# HP Mini 210 CMOS Battery Replacement

Replace the CMOS (Complementary Metal-Oxide Semiconductor) battery to power the system clock and computer BIOS settings.

Written By: Heather Freed



---

## INTRODUCTION

If the system clock or the BIOS (Basic Input/Output System) settings reset when the netbook is turned off, the CMOS (Complementary Metal-Oxide Semiconductor) battery may need to be replaced.

The CMOS battery should be replaced with a 3-volt 2032-size coin battery.



### TOOLS:

- [Spudger](#) (1)
  - [Tweezers](#) (1)
  - [iFixit Tech Knife](#) (1)
  - [iFixit Opening Tools](#) (1)
-

## Step 1 — Battery



- i** Turn off and unplug the netbook before replacing the battery.

  - Hold the netbook top-side down with the lid closed.
  - Slide the plastic battery release latches towards the lock symbols.
- i** The left tab unlocks completely, but you will need to hold the right tab towards the lock symbol as you remove the battery.

## Step 2



- Slide the battery out from the netbook.

## Step 3 — Disassembling HP Mini 210 Back Case



- Turn the netbook to view its edge.
- Press both orange eject buttons simultaneously, and use a spudger to pry off the back case.

## Step 4



- If the back case does not separate from the netbook easily, use the spudger to pry off the back case by the edge near the battery compartment, and work your way to the sides. The case will then pivot along the front edge.

## Step 5



- Pull the back case off from the front edge.

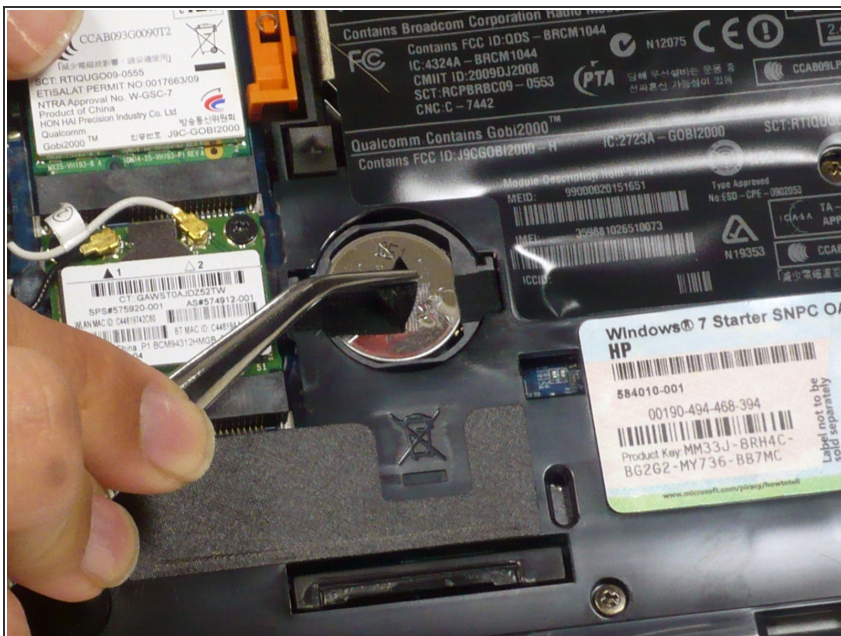
## Step 6 — CMOS Battery



- Cut one side of the black adhesive ribbon on top of the CMOS battery with a utility blade.

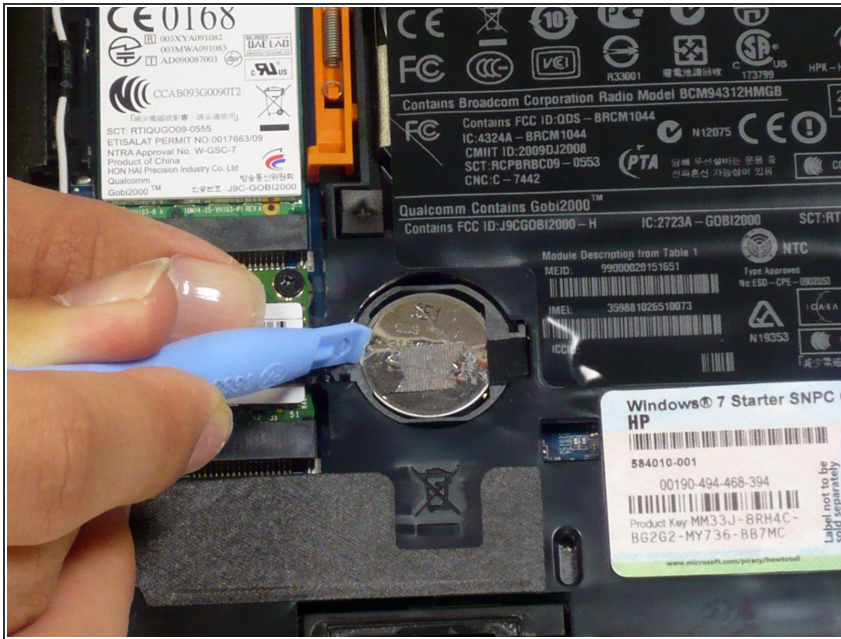
⚠ Be careful not to scratch or damage the battery or netbook, and be sure to keep your fingers out of the way!

## Step 7



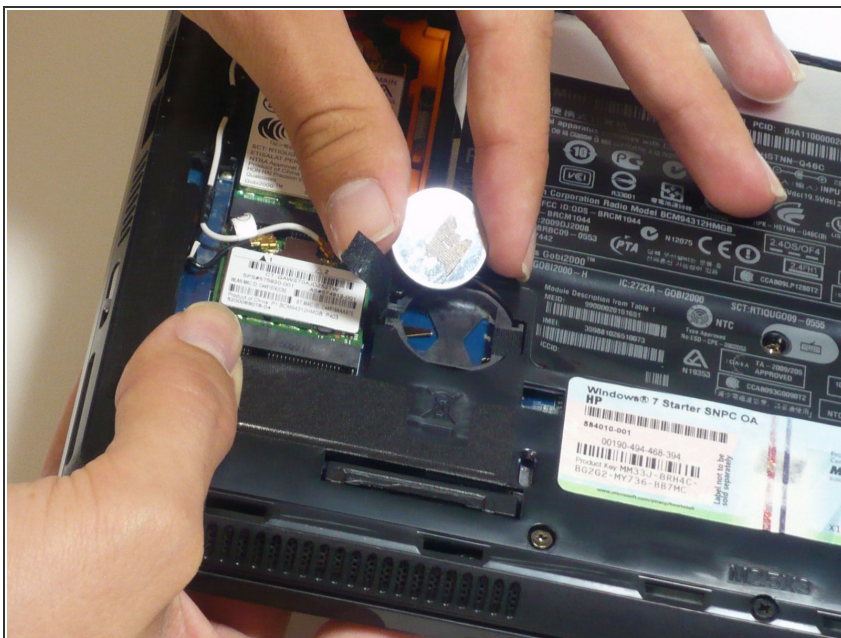
- Slowly peel back the black adhesive ribbon with tweezers.

## Step 8



- Pry the CMOS battery out with a plastic opening tool.

## Step 9



- Pop the CMOS battery out.
- ★ When reinstalling, insert the battery back into the slot with the positive terminal facing up.

To reassemble your device, follow these instructions in reverse order.