



# Toshiba Satellite CL15t-B1204X Motherboard Replacement

Written By: Royce Alexander Porter





## TOOLS:

- [Phillips #0 Screwdriver](#) (1)
  - [Spudger](#) (1)
-

## Step 1 — Battery



- Flip the laptop over so the bottom of the device is facing upward.

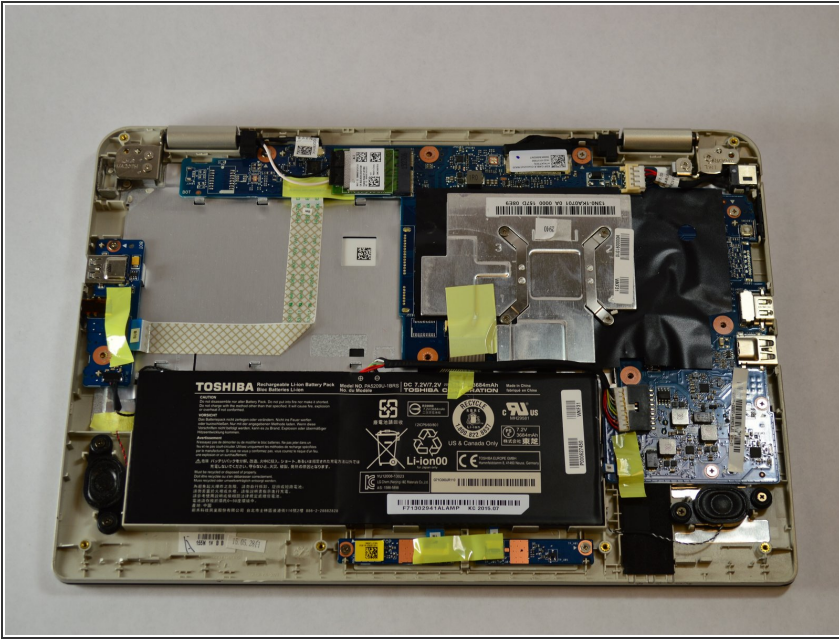
## Step 2



- Unscrew the 10 5mm Phillips screws, located on the bottom side of the notebook using the PH1 bit and the Magnetic Driver.



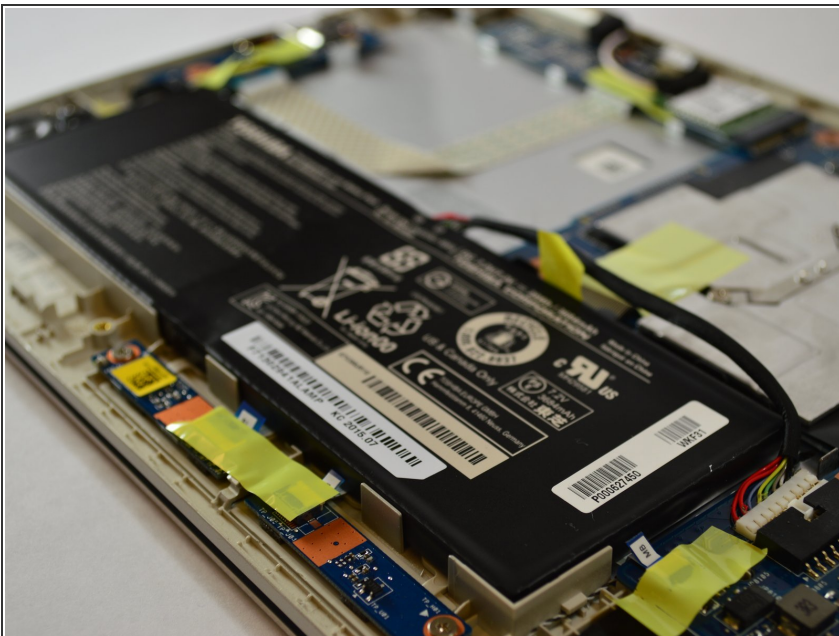
### Step 3



- Pry open the bottom cover of the notebook with the plastic spudger tools. Slide a thin tool along the edges without ports to pop open the latches.

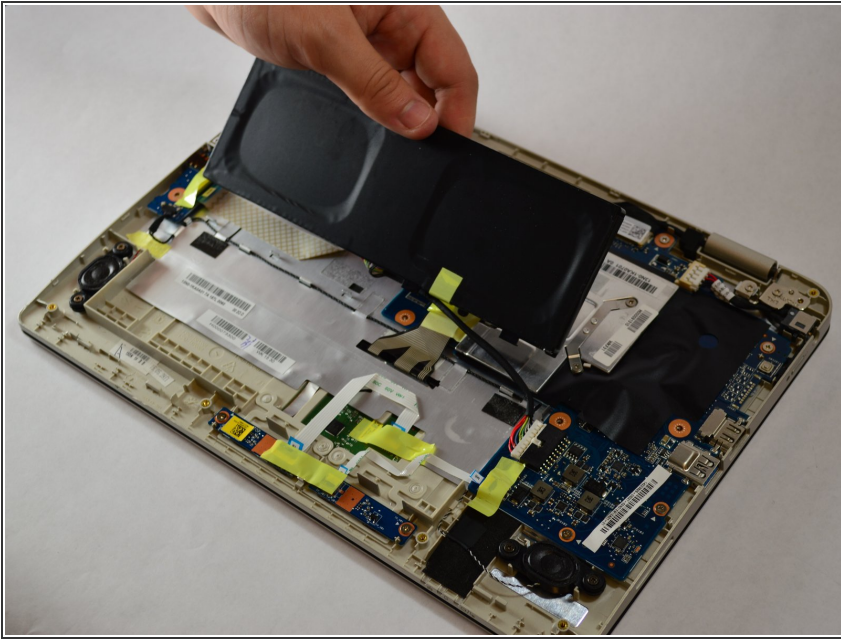
⚠ Be careful not to bend or crack the plastic back cover.

### Step 4



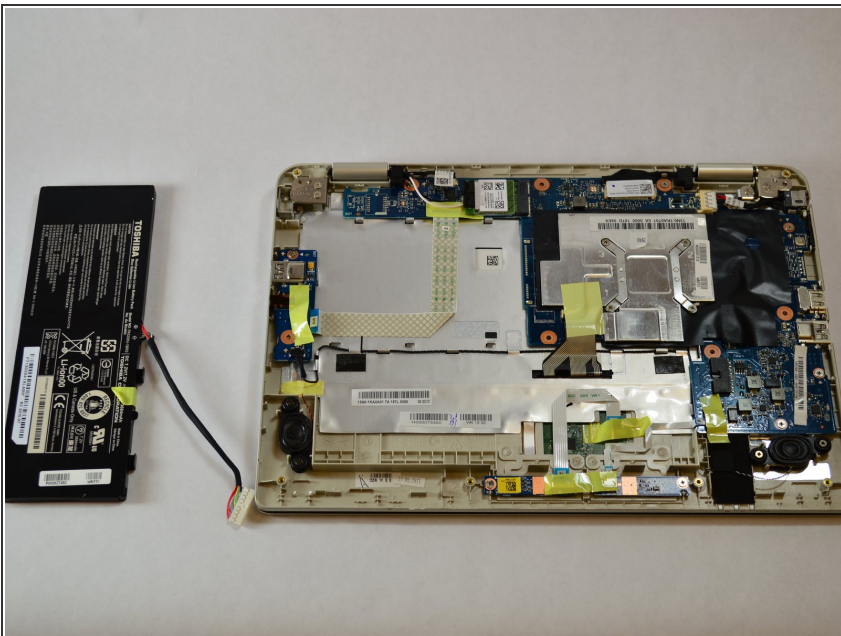
- Remove the 1" yellow tape on top of the battery. This piece of tape is holding down the battery connection cable.

## Step 5



- Lightly grip the battery on the two longest sides. Gently pull up until the adhesive on the notebook is separated from the battery.

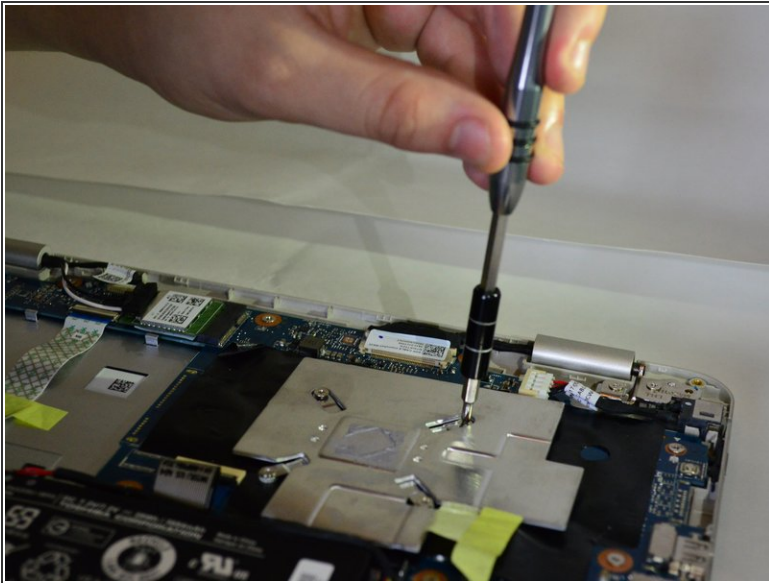
## Step 6



- Carefully unplug the battery from the device motherboard.



## Step 7 — Motherboard



- Unscrew the four 3mm screws with the PH1 screw head, on the corner of the heatsink.

## Step 8



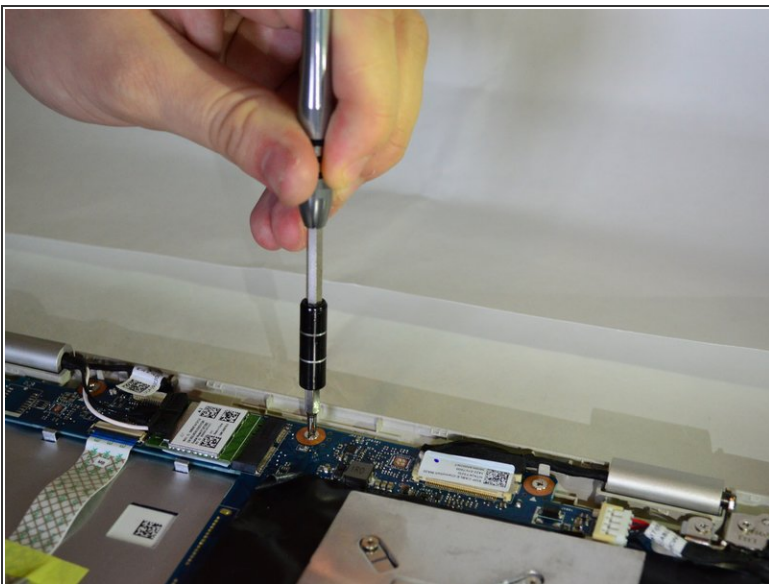
- Carefully remove the Heatsink from the board.

## Step 9



- Unplug all 5 Ribbon cables connecting the motherboard.

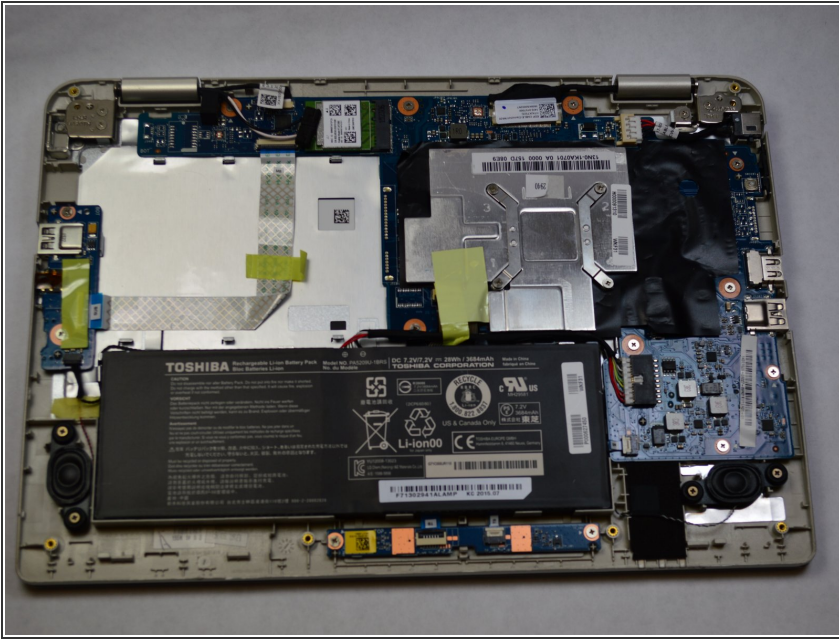
## Step 10



- Unscrew the seven 3mm screws with the PH1 screw head, which are surrounded by a red circle to make identification easier, from the motherboard.



## Step 11



- Carefully pick up and remove the motherboard.

To reassemble your device, follow these instructions in reverse order.