



Toshiba Satellite CL15t-B1204X Network Card Replacement

Walk user's through the process of opening up the device, then finding and replacing the network card.

Written By: Royce Alexander Porter





TOOLS:

- [Phillips #0 Screwdriver](#) (1)
- [Phillips #1 Screwdriver](#) (1)
- [Spudger](#) (1)

Step 1 — Battery



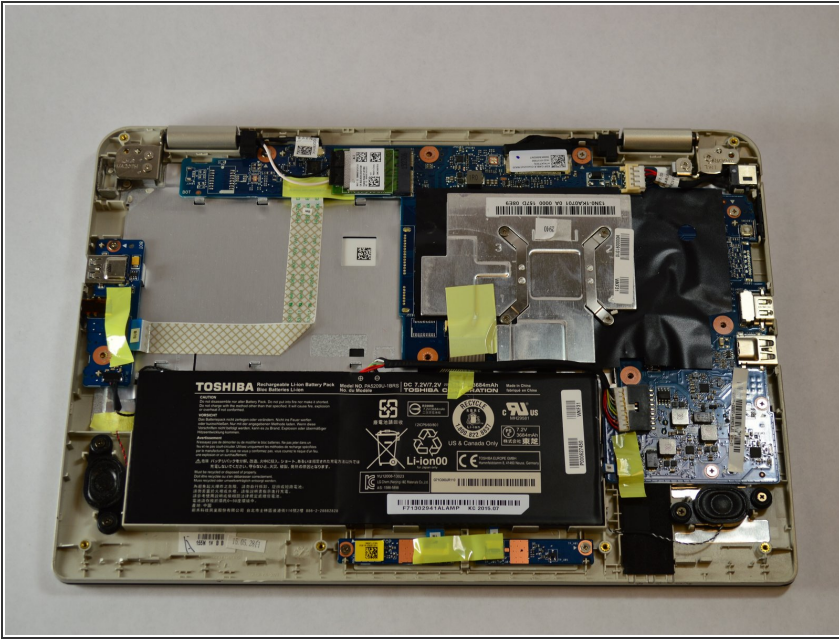
- Flip the laptop over so the bottom of the device is facing upward.

Step 2



- Unscrew the 10 5mm Phillips screws, located on the bottom side of the notebook using the PH1 bit and the Magnetic Driver.

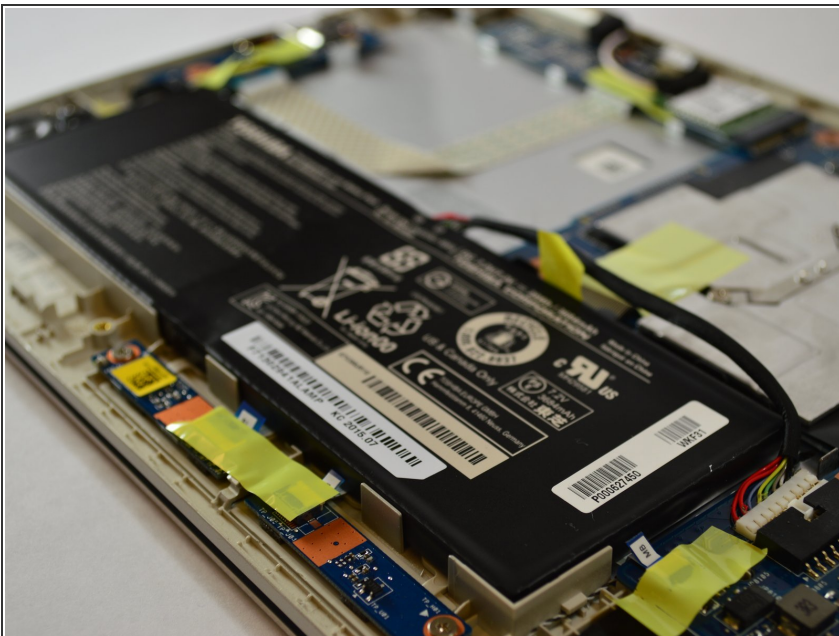
Step 3



- Pry open the bottom cover of the notebook with the plastic spudger tools. Slide a thin tool along the edges without ports to pop open the latches.

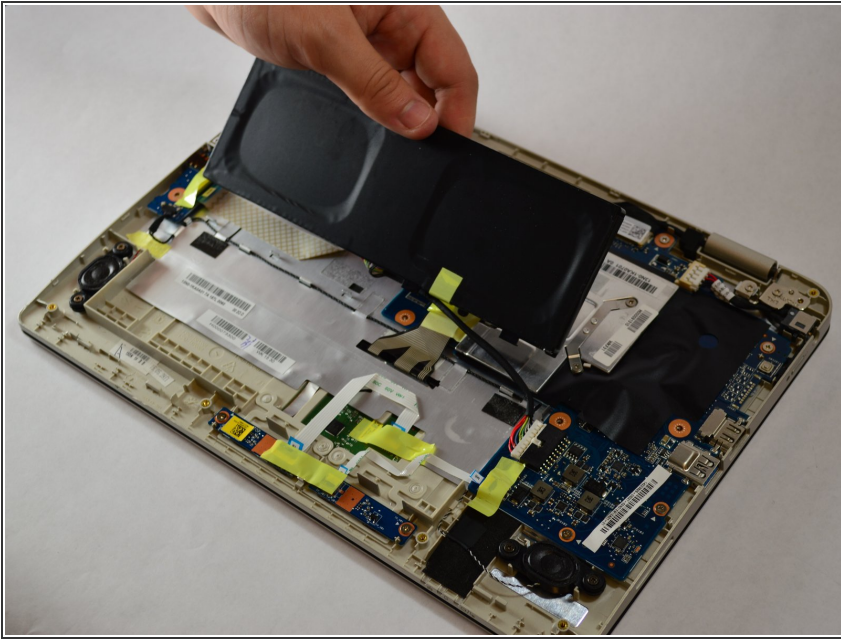
⚠ Be careful not to bend or crack the plastic back cover.

Step 4



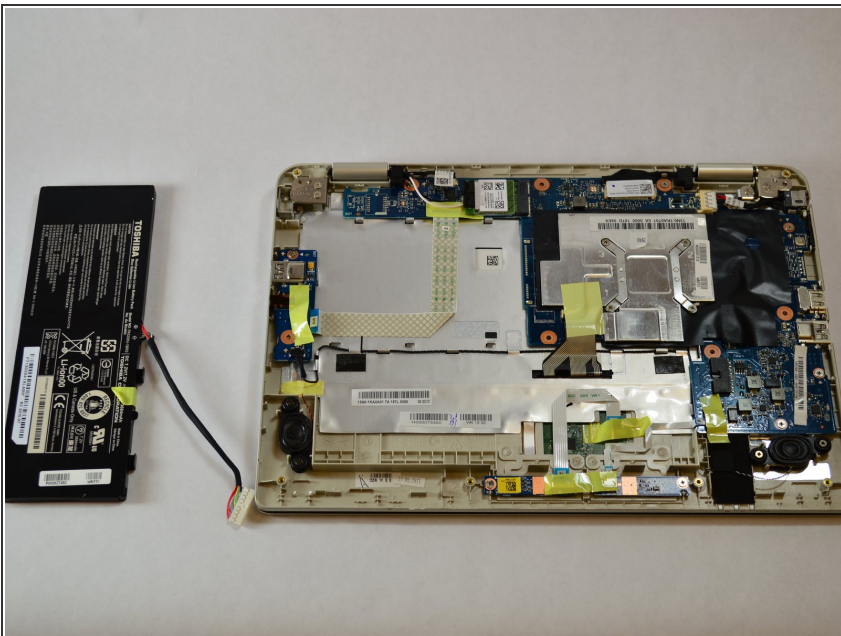
- Remove the 1" yellow tape on top of the battery. This piece of tape is holding down the battery connection cable.

Step 5



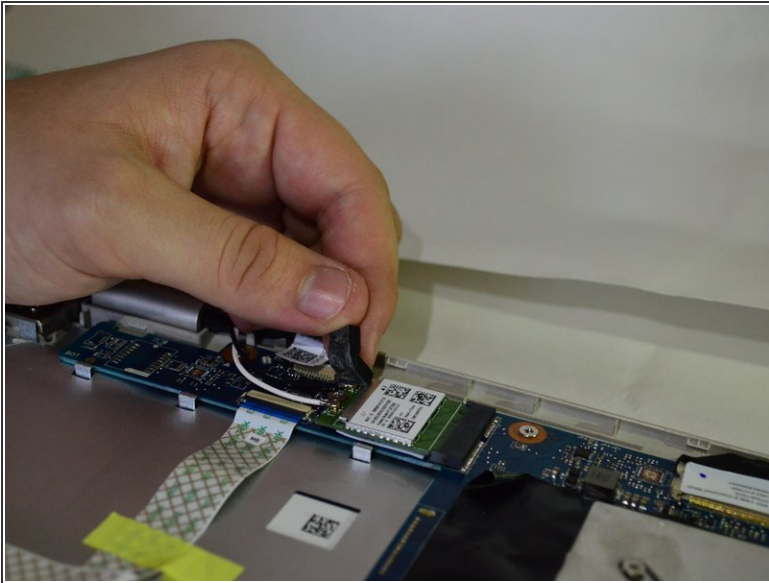
- Lightly grip the battery on the two longest sides. Gently pull up until the adhesive on the notebook is separated from the battery.

Step 6



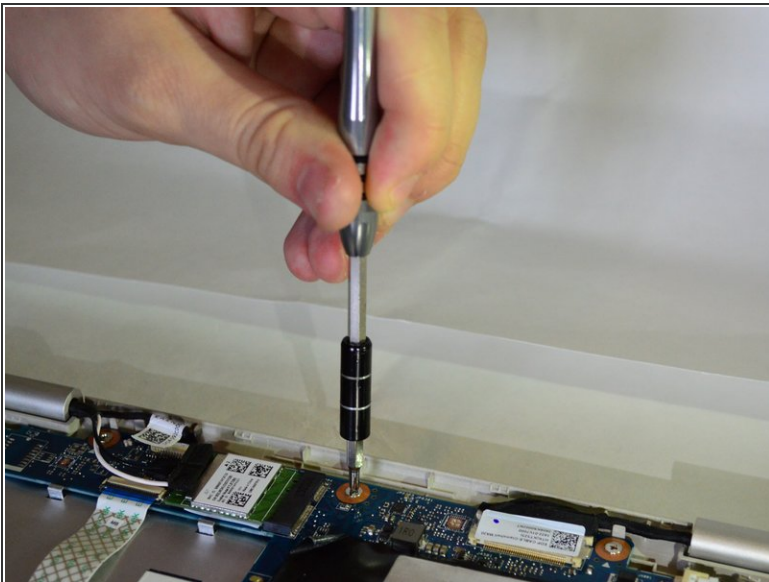
- Carefully unplug the battery from the device motherboard.

Step 7 — Network Card



- Peel off the black antenna stuck to the card.

Step 8



- Carefully use the PH1 screw head to unscrew the one 3mm screw on the network card found near the hinge at the top.

Step 9



- Remove the network card.

To reassemble your device, follow these instructions in reverse order.