



Lenovo IdeaPad 330S Teardown

Written By: IT FIX

INTRODUCTION

CPU: Intel Core i7-8550U 1.80 GHz

RAM: Samsung DDR4-8+4GB-2666

Hard Drive: Toshiba NVMe 128GB WD Blue 1TB HDD

Graphics: NVIDIA GeForce GTX1050



TOOLS:

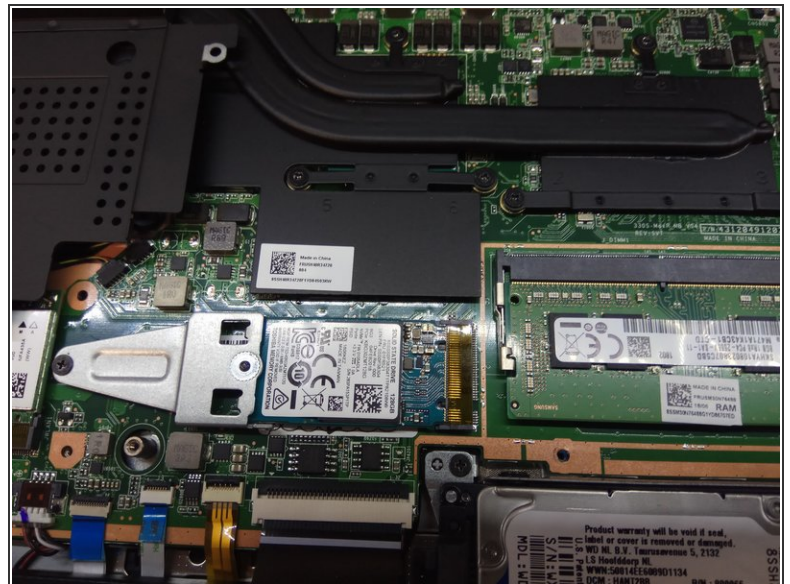
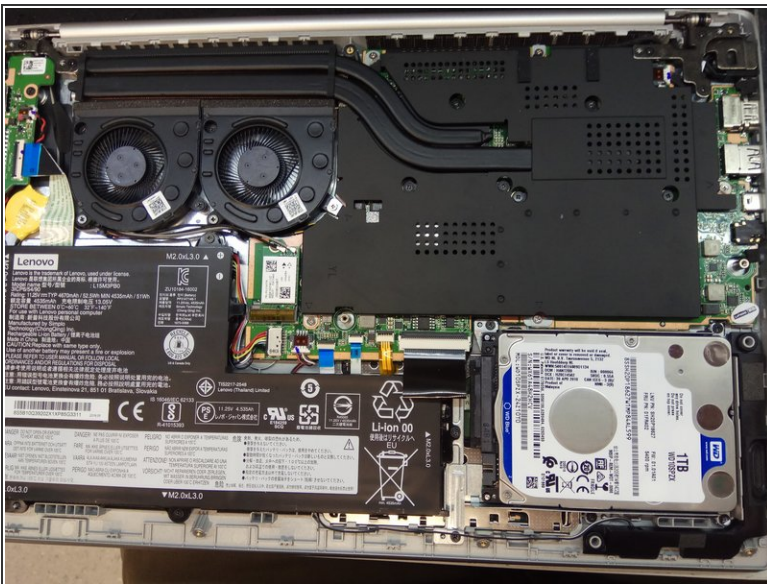
- [Pro Tech Toolkit](#) (1)

Step 1 — Lenovo IdeaPad 330S Teardown



- Insert wisdom here.

Step 2



- The motherboard on the 330s with a GTX 1050 discrete graphics card is different than the motherboard on a 330s with integrated UHD graphics. Upgrading the graphics card is not possible, unless you can get a useable motherboard from a "for parts" 330s, then (in theory) it could be possible. I have not been able to test that myself in practice.