



# HP Photosmart c4780 Scanner Glass Replacement

How to replace the scanner glass in case of broken, scratched, or dirty glass. Replacement will help scanning quality.

Written By: garrett hall





## TOOLS:

- [iFixit Opening Tools](#) (1)
- [T10 Torx Screwdriver](#) (1)



## PARTS:

- [3mm 33.8cm by 24.7cm glass piece](#) (1)

## Step 1 — Outer Shell Disassembly



- Unplug the device from any energy sources.
- Lift the top cover of the scanner.
- Use a plastic opening tool to remove the plastic frame surrounding the glass.

## Step 2



- Carefully pull the frame away from the glass.
- ⓘ If it doesn't remove easily, use the iFixit Opening Tool again to pry stuck sections.



### Step 3



- Use a T10 screwdriver to unscrew the two screws that fasten the frame to the printer hood.

### Step 4



- Put your finger behind the panel with the power button.
- Then, pull the piece outwards.

## Step 5



- Unscrew the screw inside the power button panel space.
- Then, unscrew the screw that is across the printer slider.

## Step 6



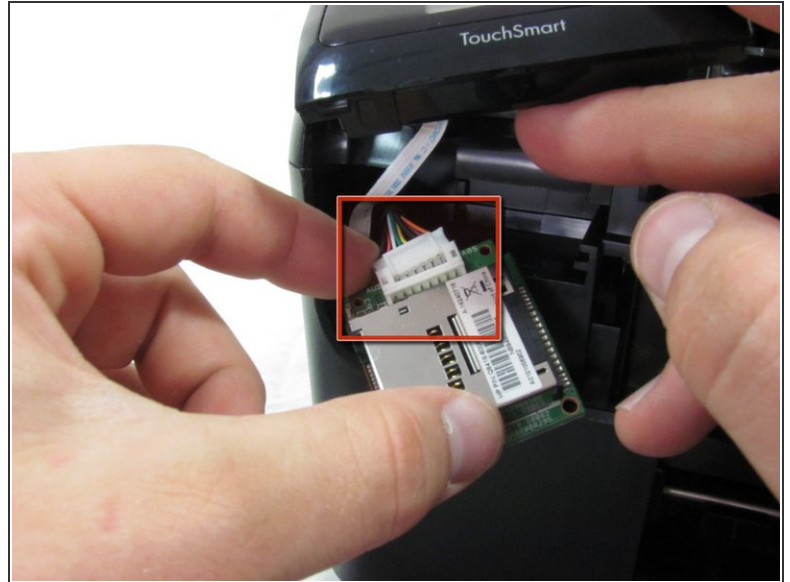
- Pull the white circuit board outwards which is located under the small screen.
  - Unplug the small ribbon cable from the circuit board.
- ⚠ Be careful when you unplug the ribbon cable not to use too much force. Using too much force may damage or rip the cable.

## Step 7



- Unplug the small ribbon cable from the circuit board. Be careful when you unplug the ribbon cable not to use too much force. Using too much force may damage or rip the cable.

## Step 8



- Pull the memory card reader's circuit board out.
- Detach the white wiring connector from the back of the circuit board.
- ⓘ You may need to use a finger nail or a plastic opening tool to detach the white wiring connector from the circuit board.



## Step 9



- Put your finger behind the small screen.
  - Then, pull it up.
- ⚠ Do not hesitate to use force to remove the TouchSmart panel.
- Disconnect the ribbon cable from the small screen.

## Step 10



- Pull the printer hood upward.

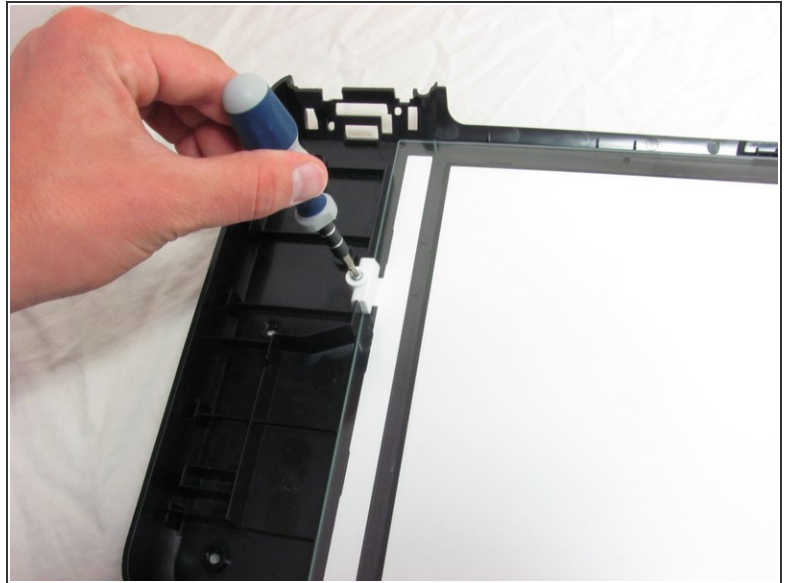
## Step 11 — Scanner Glass



- With the top half of the printer separated, lift the upper section with the scanner glass away from the lower section of the printer.

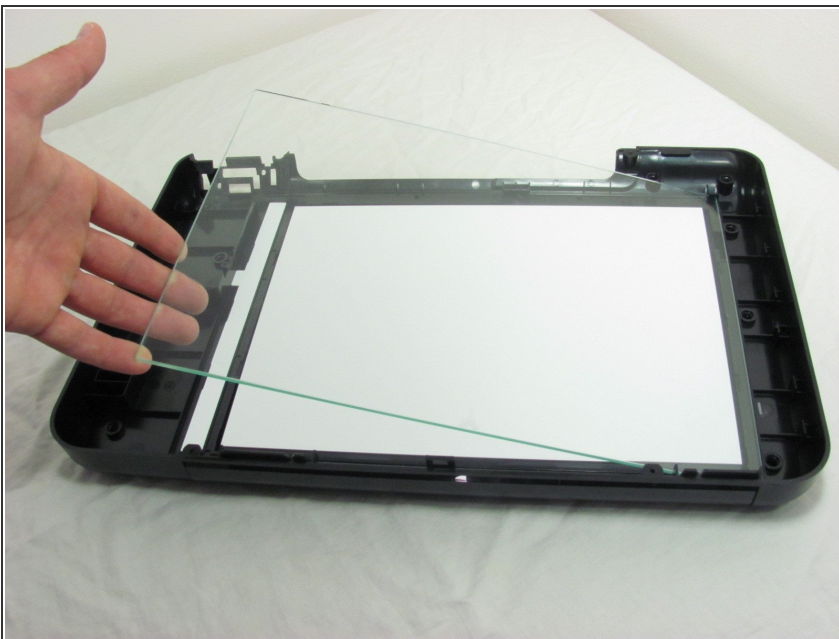


## Step 12



- With the glass facing upwards, remove the screw holding the glass in place.

## Step 13



- Lift the glass up and away from the printer.
- ⓘ Handle glass with care.
- Replace the broken glass piece with the replacement glass

To reassemble your device, follow these instructions in reverse order.