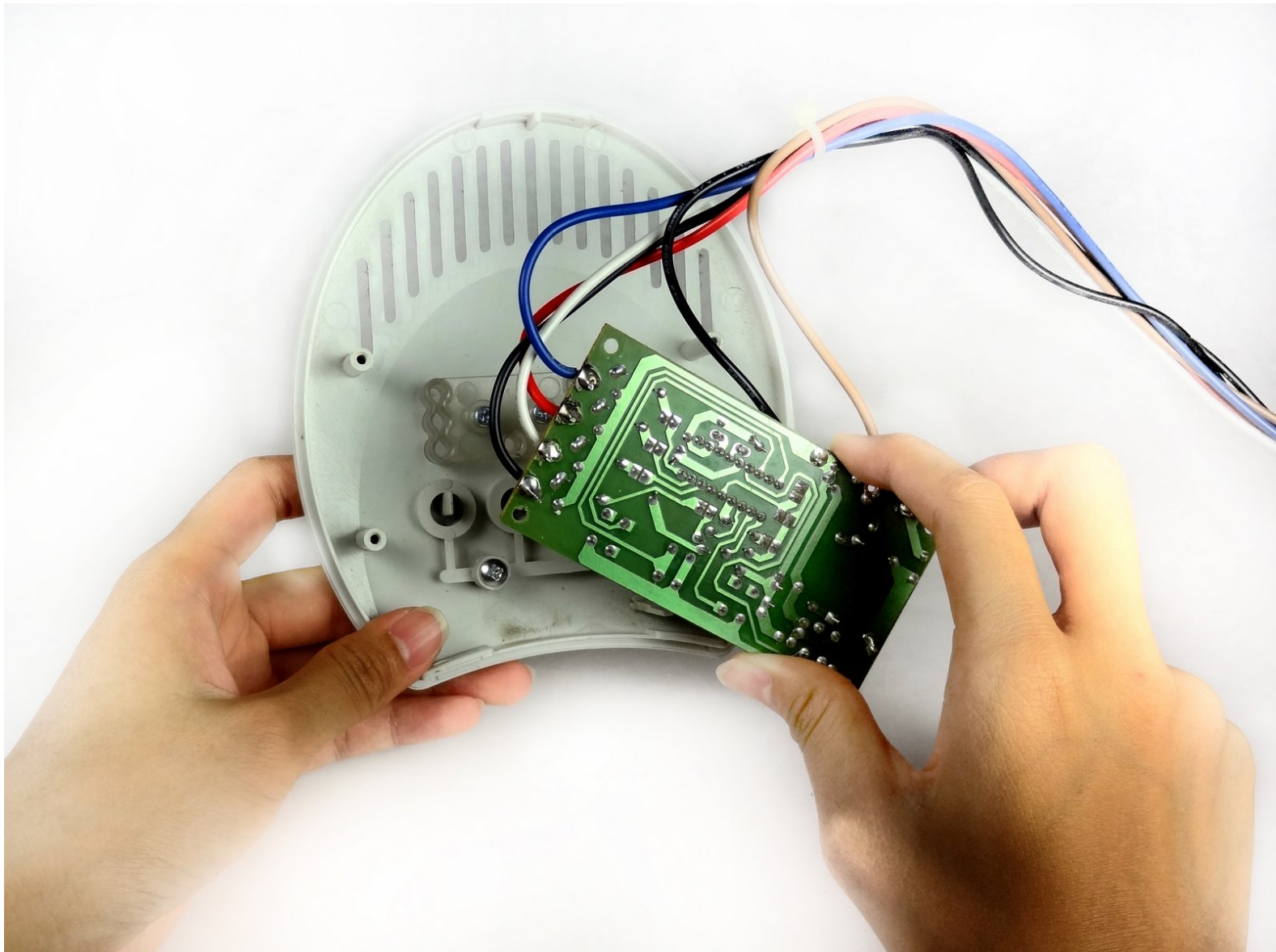




# How to Resolder the LEDs on a Seville Classics MSC10166

Follow this guide to fix the LEDs on your Seville Classics MSC10166 fan.

Written By: Queena Phung



## INTRODUCTION

This guide will show you how to get to the LEDs on your Seville Classics MSC10166 Tower Fan and how to inspect the circuit board. If there is a faulty connection or a loose wire, this guide demonstrates a quick solution.



### TOOLS:

- [Phillips #2 Screwdriver](#) (1)
  - [Soldering Iron](#) (1)
-

## Step 1 — PCB (Printed Circuit Board)



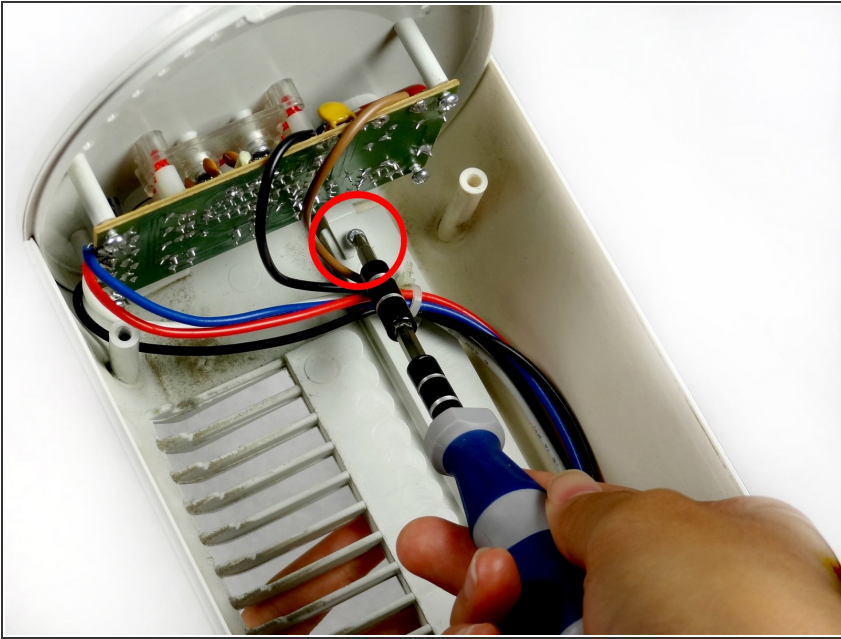
- Use the Phillips #2 screwdriver to remove the four 6 mm screws by unscrewing counterclockwise.

## Step 2



- Pull the front and back cover apart.
- ⚠ Be careful not to pull the front cover off completely. It holds the wires.

### Step 3



- Remove the Phillips 6 mm screw that holds the circuit board to the outer shell of the fan.

⚠ Shock warning: Make sure the fan is unplugged before removing the circuit board.

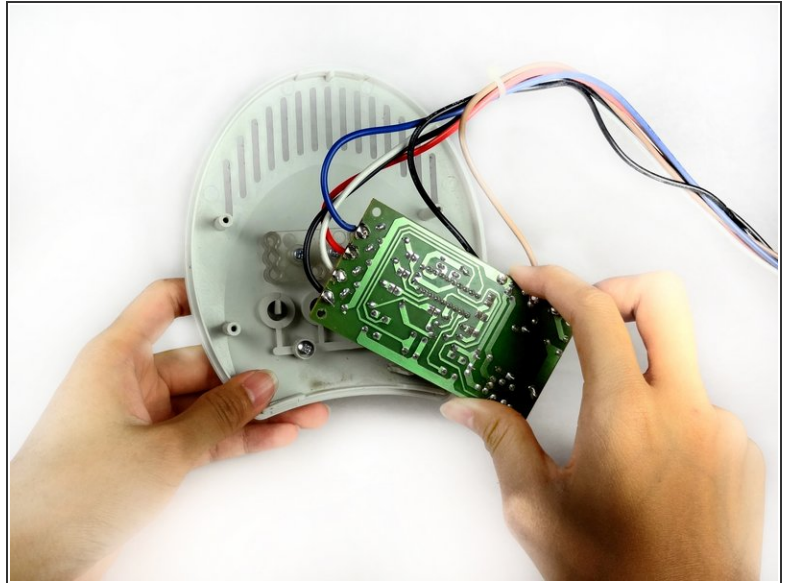
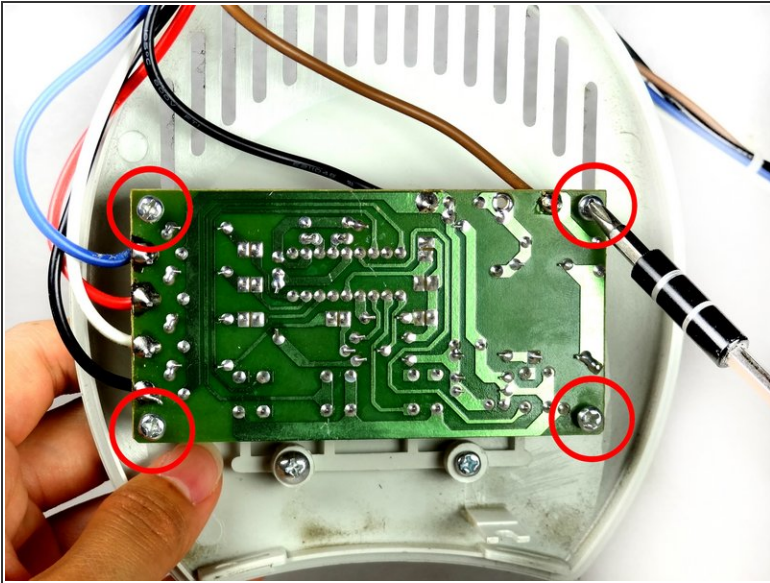
### Step 4



- Remove the top cover containing the circuit board and the wires by pulling it away from the outer shell of the fan.

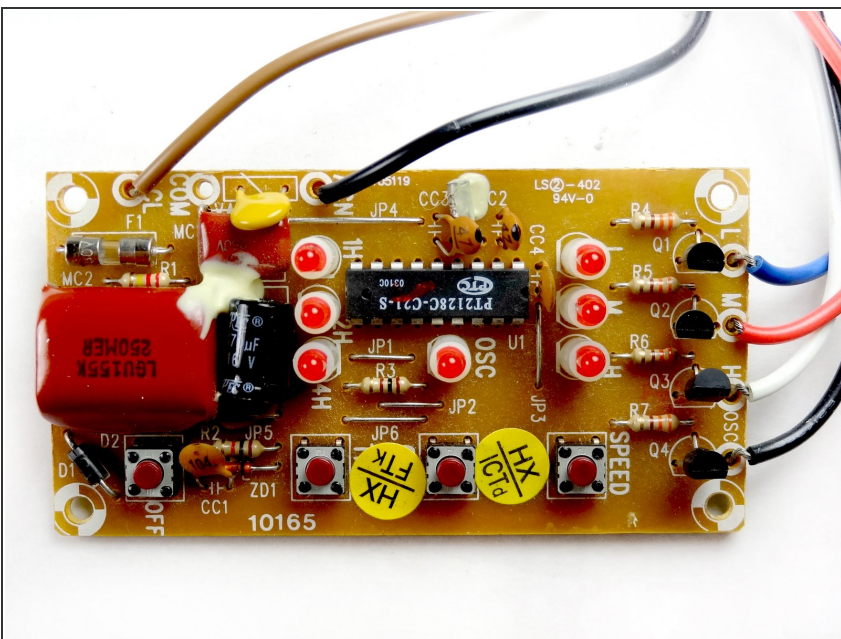


## Step 5



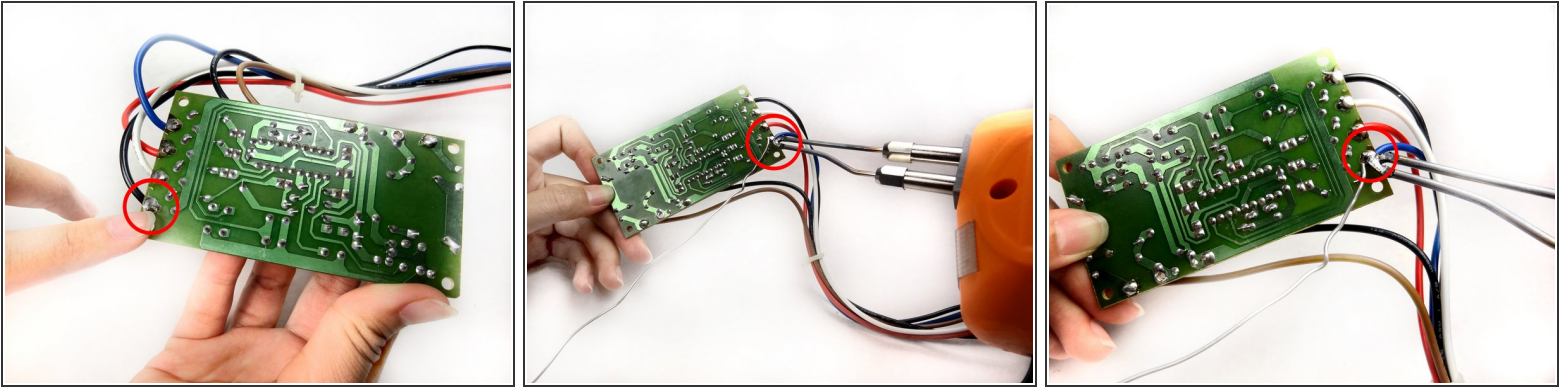
- Remove the screws from the four corners of the circuit board.
- Remove the circuit board from the top cover.
- ⚠ Do not touch the other side of the circuit board to avoid damaging the circuit elements.

## Step 6 — How to Resolder the LEDs on a Seville Classics MSC10166



- ① Shown is the top side of the printed circuit board that contains the LEDs.
- Inspect the PCB for any faulty connections or loose components.

## Step 7



- Make sure the wires on the side of the board are properly connected.
- If the wires have are not connected properly, re-solder them to the board using the soldering iron.

To reassemble your device, follow these instructions in reverse order.