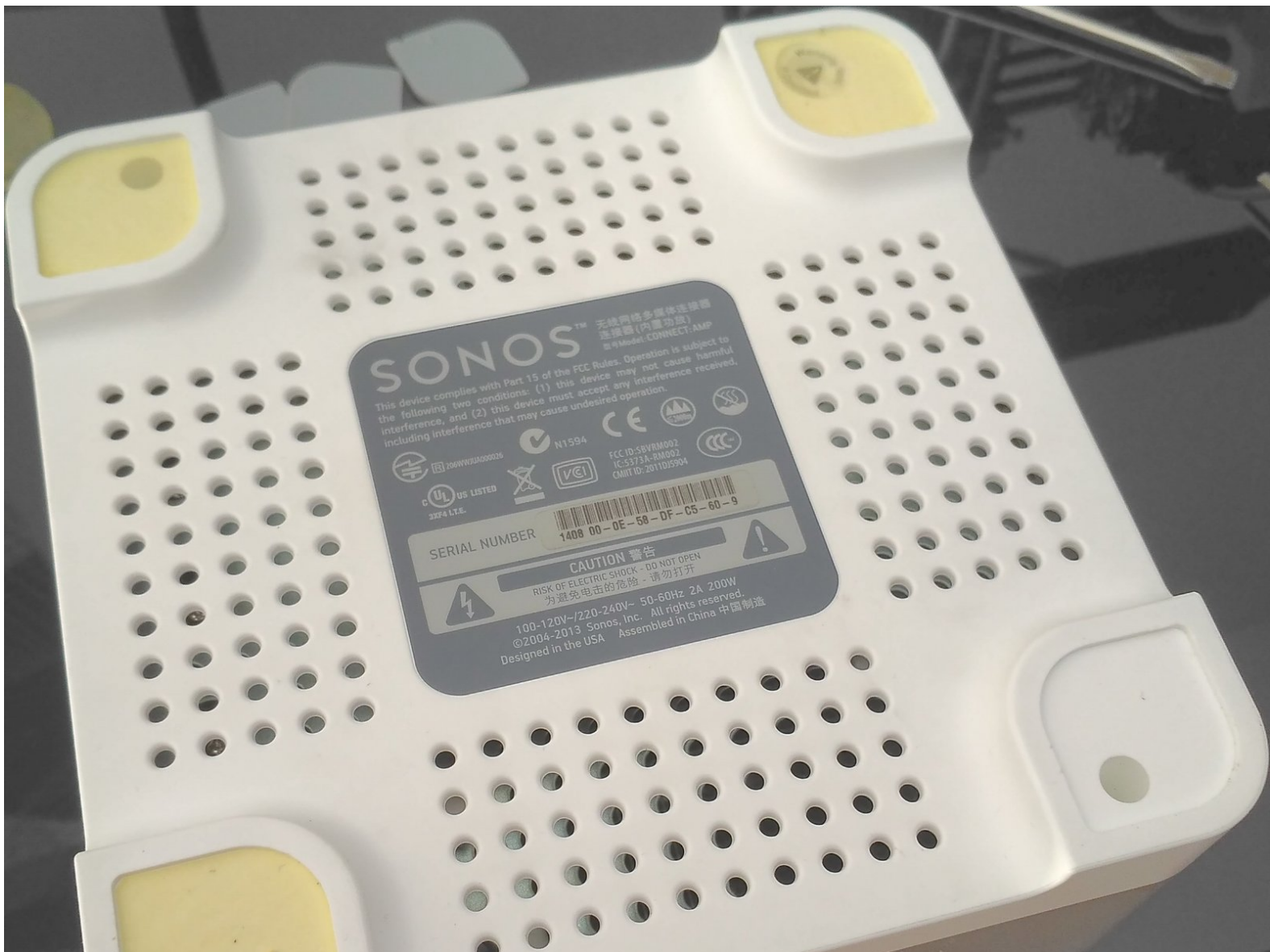




# Sonos Connect Fuse Replacement

Open the device to change the fuse.

Written By: YvesG







## TOOLS:

- [New Item](#) (1)

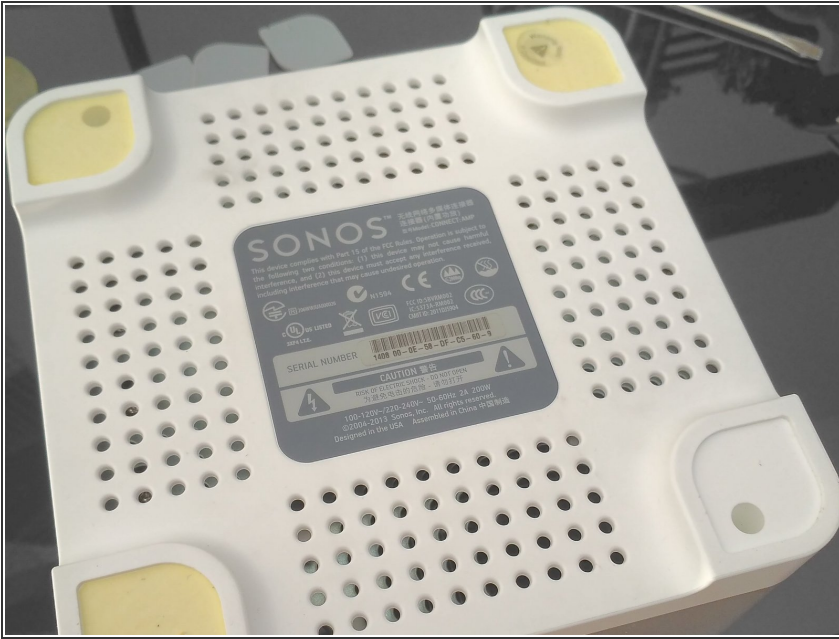


## PARTS:

- [New Item](#) (1)

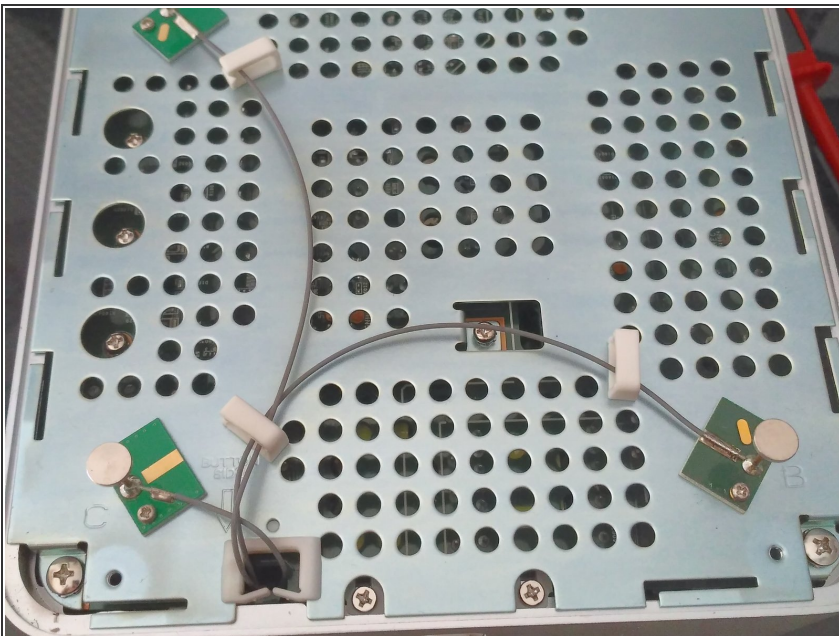


## Step 1 — Bottom Part



- Remove the rubber pads and unscrew

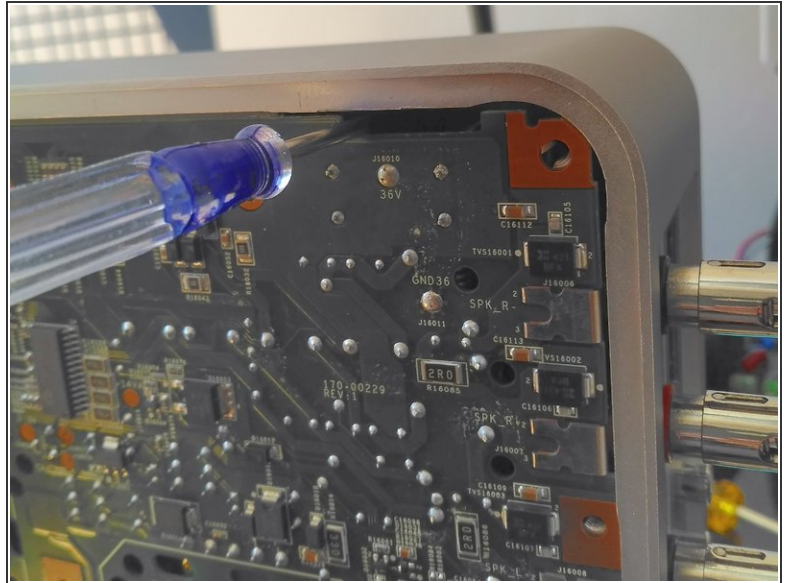
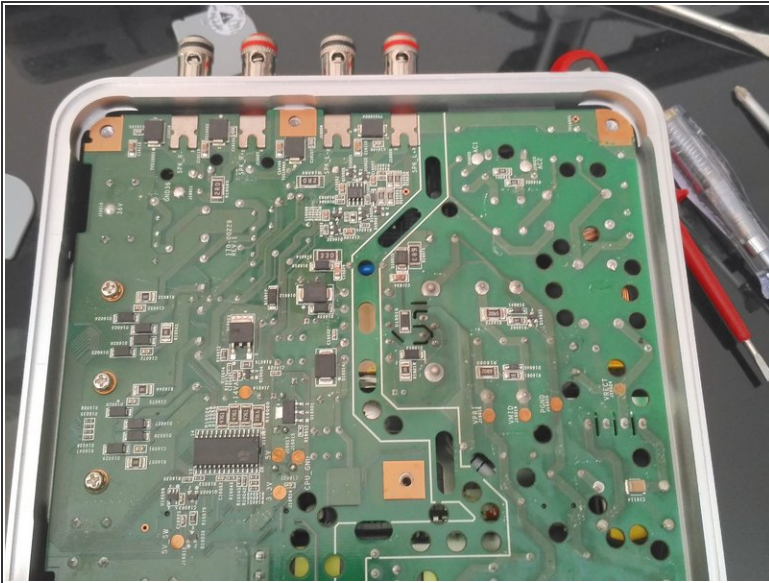
## Step 2 — Continue to unscrew



- Take care not to damage the wires of the Wi-Fi antennas which are very bothersome.



### Step 3 — Unclip the top cover



- By using a screwdriver inserted through each of the 8 peripheral slots, you can access the clips of the top cover.

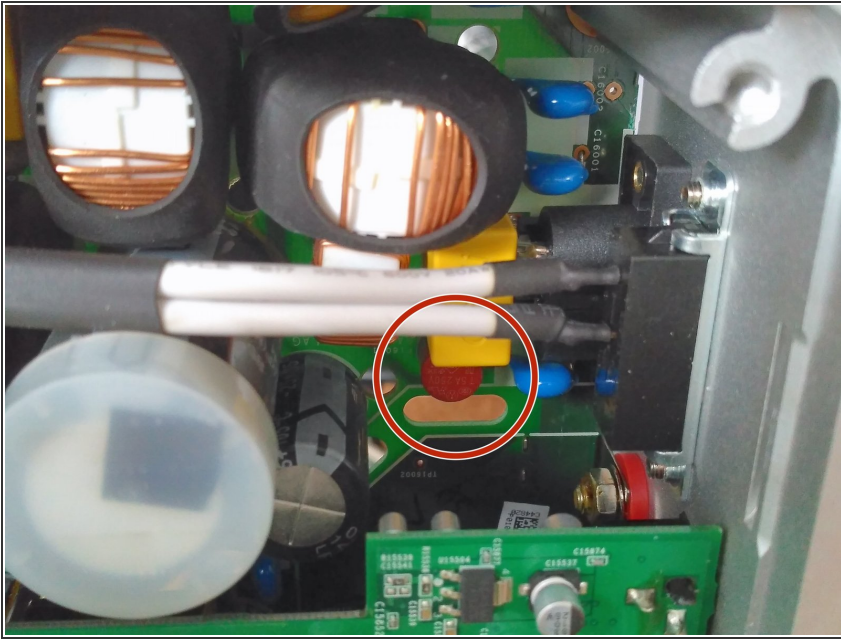
### Step 4 — Access under the top cover



- Continue unscrewing (there is a screw under the seal).

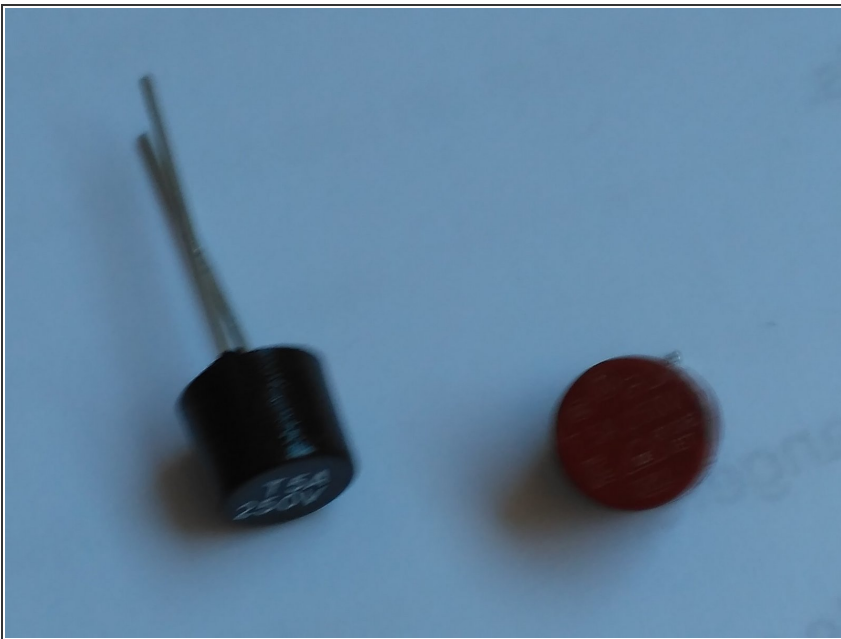


## Step 5 — Locate the fuse



- It's a soldered fuse. You will need to desolder it from the back in order to replace it.

## Step 6 — Replacement fuse



- About 1\$
- 250V 5A T fuse (time delay).

To reassemble your device, follow these instructions in reverse order.