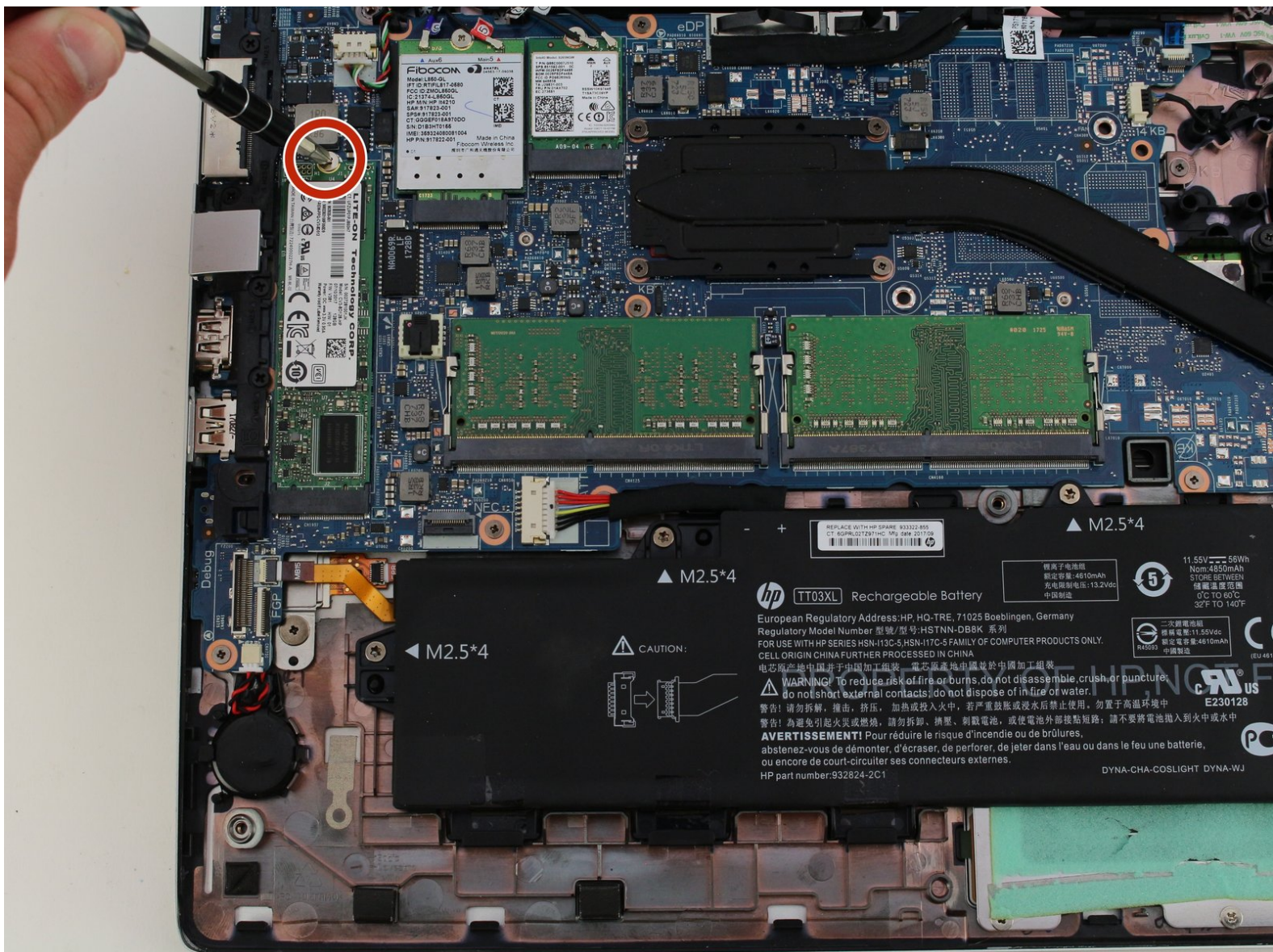




HP EliteBook 840 G5 SSD Storage Replacement

If you are experiencing difficulties with the...

Written By: Lucas Martos-Repath



INTRODUCTION

If you are experiencing difficulties with the functionality of the solid-state drive (SSD storage) in your HP Elitebook 840 G5, this guide will provide you with clear steps on replacing your SSD storage. The replacement only requires the listed screwdriver and plastic opening kit under the "Parts" category of this guide. While this replacement is relatively simple, proceed with caution as the entire backing of your computer will be removed leaving the internal electrical components exposed during the SSD replacement.



TOOLS:

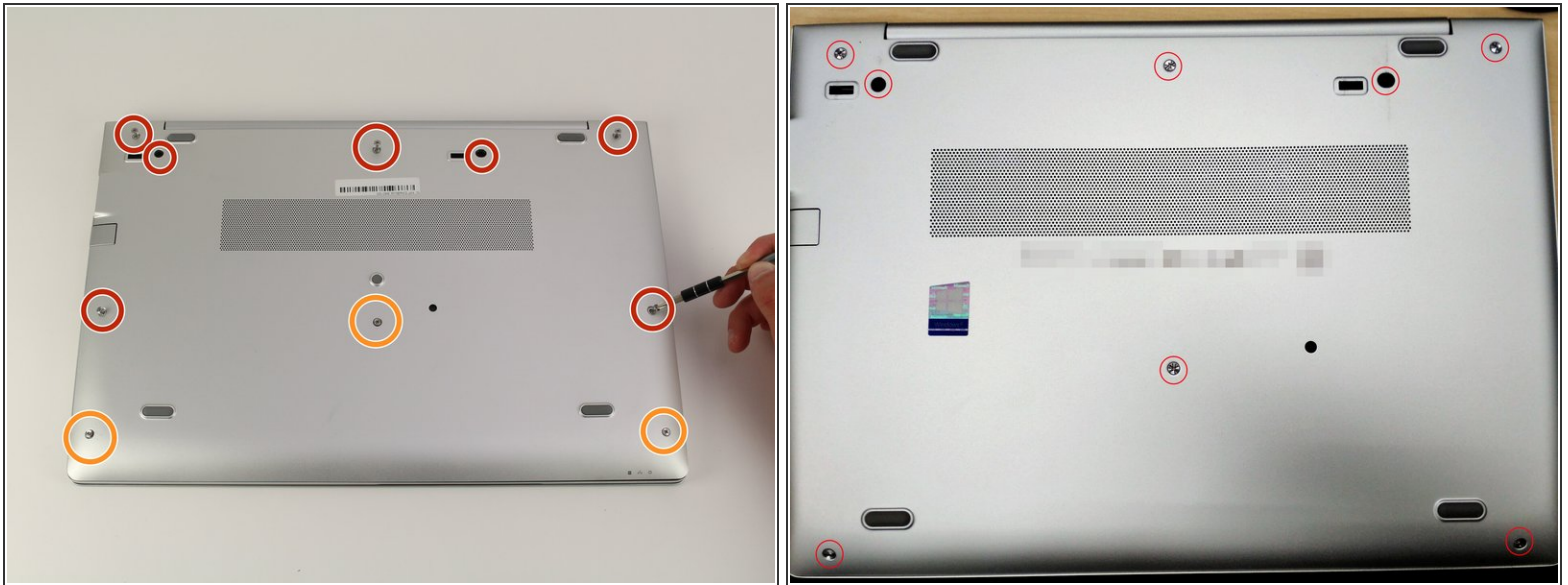
- [Phillips #1 Screwdriver](#) (1)
- [iFixit Opening Tool](#) (1)



PARTS:

- [Crucial P3 NVMe PCIe M.2 2280SS SSD - solid performance, switching from HDD or SATA to NVMe™](#) (1)
- [Crucial P3 Plus NVMe PCIe M.2 2280SS SSD - fast Gen4 NVMe™ storage for data-intensive applications](#) (1)
- [Crucial P5 Plus NVMe PCIe M.2 2280SS SSD - professionals, creatives, and hardcore gamers](#) (1)


Step 1 — Back Cover



- Use a Phillips #1 screwdriver to undo the five screws. The top three screws are 10 mm and the two side screws are 7 mm.
- Unscrew the bottom three screws using the same screwdriver.
- ⓘ The bottom Phillips #1 screws don't remove from the back plate, but do need to be unscrewed.
- ⓘ Some models have a slightly different screw configuration, shown in the second photo.

Step 2



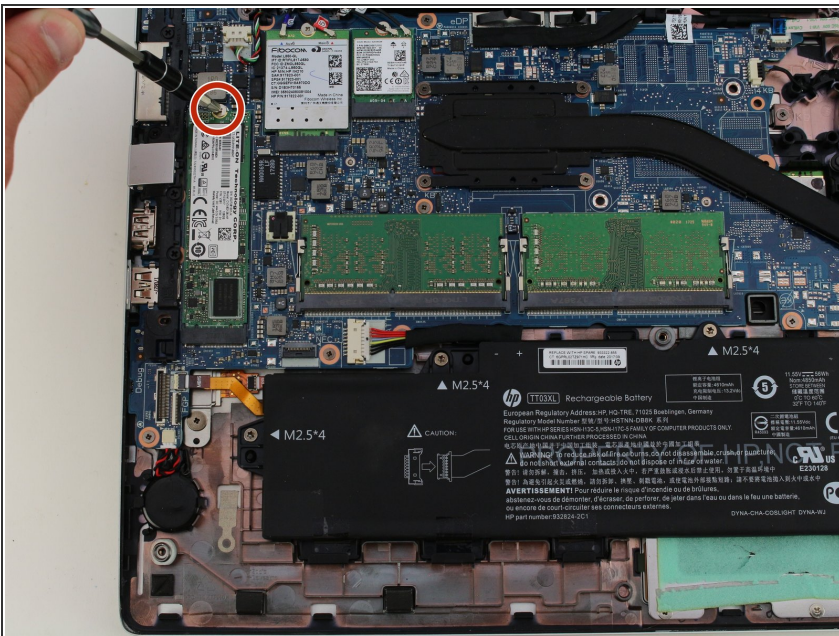
- Turn computer so that the hinged side is facing up.
 - Use the plastic opening tool to pry open the back plate.
 - Drag the plastic opening tool along the edge from left to right and use a second opening tool to pry open the top right corner.
 - Repeat the 3rd step for the other side.
 - Repeat on Left and Right sides of the system. There are two points in the middle (on the left and right sides of the center screw) that will release with slight lifting pressure.
-  You should be able to hear a pop when prying open the corners.

Step 3



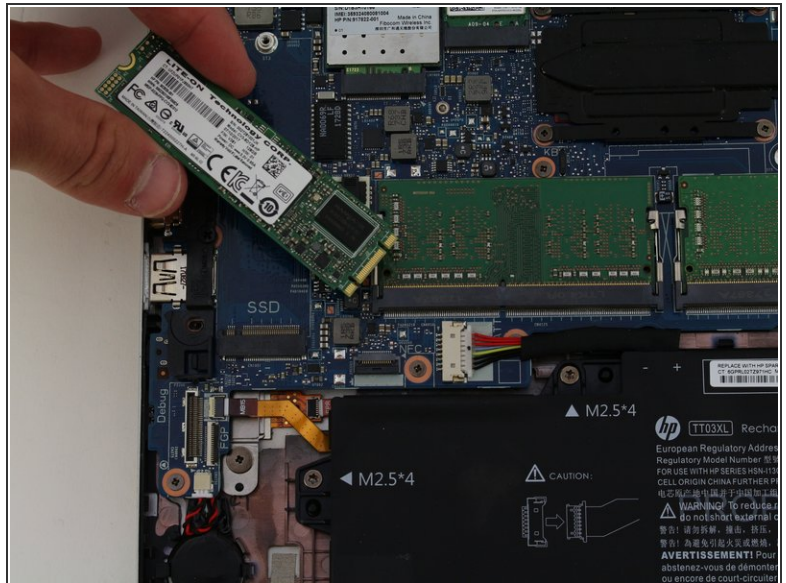
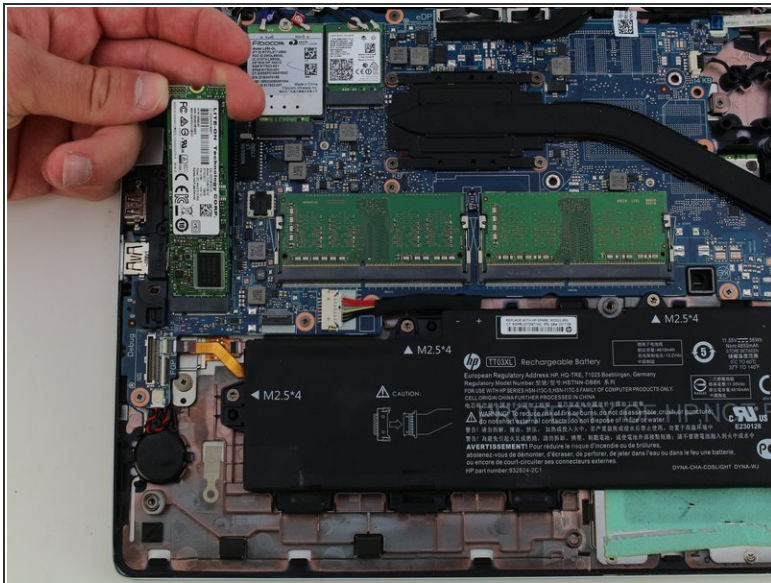
- Grab the back plate and separate it slowly away from the device.
- ⓘ No wiring is connected to the back plate. Separate with caution, as there are electric components on the inside.

Step 4 — SSD Storage



- Using a Phillips #1 screwdriver, remove the single 2mm screw that holds the SSD storage in place.

Step 5



- The SSD storage will pop up.
- Gently pull out the SSD from its slot.

To reassemble your device, follow these instructions in reverse order.