



Google Home Mini Speaker Replacement

A guide to replace the speaker for Google Home...

Written By: Mia Sulaiman



INTRODUCTION

A guide to replace the speaker for Google Home Mini.

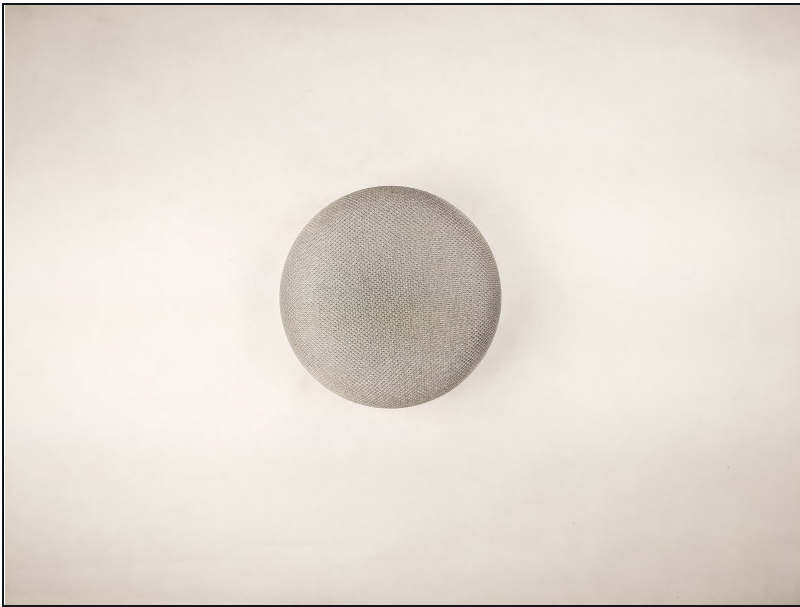
TOOLS:

[Tweezers](#) (1)

[T6 Torx Screwdriver](#) (1)

[TR8 Torx Security Screwdriver](#) (1)

Step 1 — Google Home Mini Disassembly



- Place device on a flat surface.

Step 2



- Remove the rubber bottom as per the [Google Home Mini teardown guide](#).
- Remove the four 7mm T6 Torx screws from the bottom.

Step 3



- Remove the lower half of the device.
- ⚠ Be careful as a black ribbon cable connects the two halves together.

Step 4



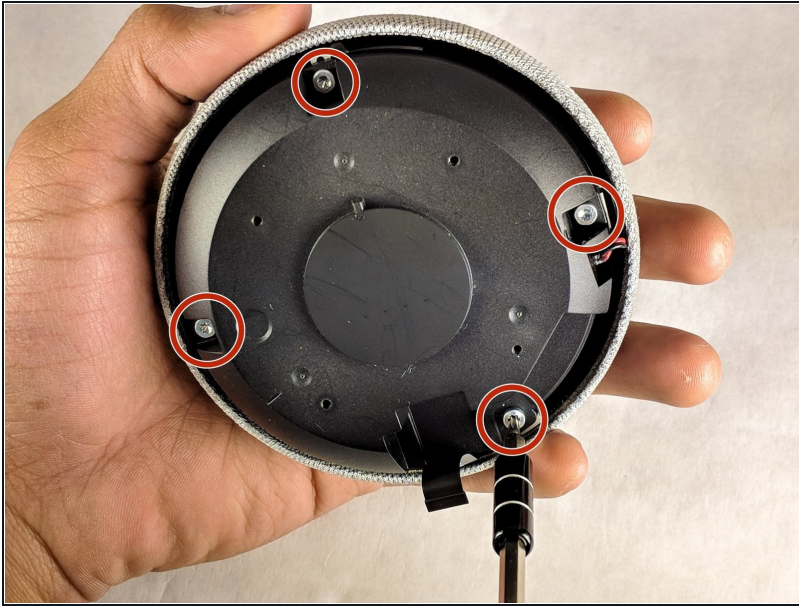
- Using a pair of [tweezers](#), unlatch the Zero Insertion Force (ZIF) fastener that connects the ribbon cable to the board.
- ① Flip up and push the ZIF fastener towards outside of the lower case to loosen it.

Step 5



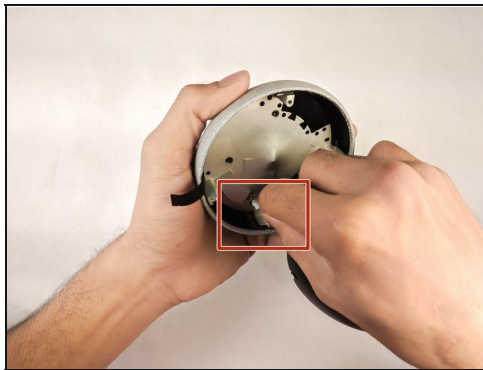
- Pull the ribbon cable off.

Step 6 — Speaker



- Remove the four 7.8mm T8 Torx screws.

Step 7



ⓘ The speaker will still be connected to the device.

- Using your fingers, disconnect the wires.

To reassemble your device, follow these instructions in reverse order.